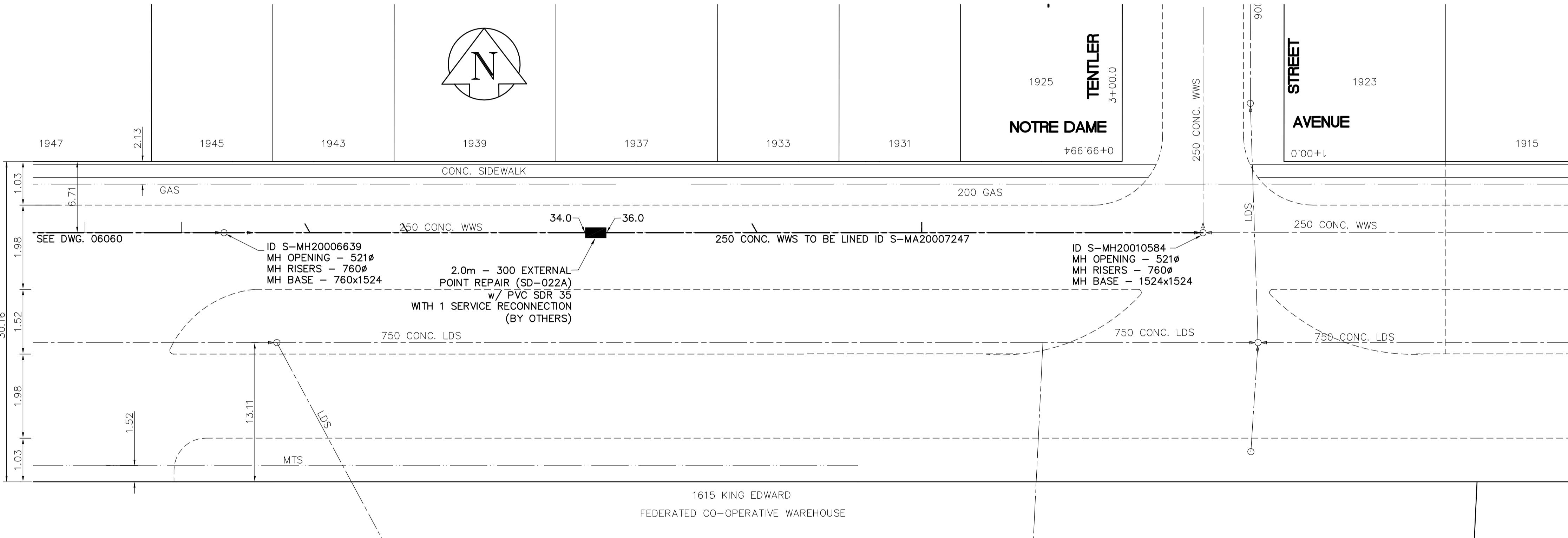


SEWER JUNCTION INFORMATION FROM VIDEO INSPECTION S-MA20007247	
DISTANCE FROM S-MH20006639	
8.1m EAST - 100mm CONNECTION NORTH	
17.3m EAST - 100mm CONNECTION NORTH	
50.2m EAST - 100mm CONNECTION NORTH	
65.7m EAST - 100mm CONNECTION NORTH	

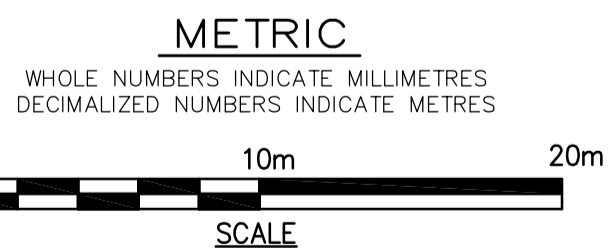
NOTE: CHAINAGES SHOWN ARE ALONG THE N.P. OF NOTRE DAME

SEE DRAWING 06066 FOR CONTINUATION



LEGEND
 -52.0 MEASUREMENT TO REPAIR FROM REFERENCE MH SHOWN THUS...
 - TO BE LINED

APEGM
 Certificate of Authorization
 Earth Tech Canada Inc.
 No. 730 Expiry: April 30, 2008



	WATERMAIN		HYDRO		WATERMAIN	LOCATION APPROVED UNDERGROUND STRUCTURES SUPV. U/G STRUCTURES COMMITTEE DATE _____ NOTE: LOCATION OF UNDERGROUND STRUCTURES AS SHOWN ARE BASED ON THE BEST INFORMATION AVAILABLE, BUT NO GUARANTEE IS GIVEN THAT ALL EXISTING UTILITIES ARE SHOWN OR THAT THE GIVEN LOCATIONS ARE EXACT. CONFIRMATION OF EXISTENCE AND EXACT LOCATION OF ALL SERVICES MUST BE OBTAINED FROM THE INDIVIDUAL UTILITIES BEFORE PROCEEDING WITH CONSTRUCTION.
	HYDRANT		TELEPHONE		HYDRANT	
	VALVE		CONCRETE		VALVE	
	LAND DRAINAGE SEWER		ASPHALT		LAND DRAINAGE SEWER	
	WASTEWATER SEWER		PROPERTY LINE		WASTE WATER SEWER	B.M. 07-032 BM ELEV.230.108
	MANHOLE		SURVEY BAR		MANHOLE	
	CATCH BASIN		CURB STOP		CATCH BASIN	EARTH TECH A tyco INTERNATIONAL LTD. COMPANY Earth Tech (Canada) Inc. Winnipeg, Manitoba 204-477-5381
	CURB INLET		TREE		CURB INLET	
	JUNCTIONS		ANODE		JUNCTIONS	
	CULVERT		CONCRETE SIDEWALK		CULVERT	DESIGNED BY: PL CHECKED BY: GSK DRAWN BY: GDL APPROVED BY: HOR. SCALE: 1:250 VERTICAL SCALE: 1:50 RELEASED FOR CONSTRUCTION BY: K. ZUREK 2007/04/11 2007/07/19
	GAS		FENCE		GAS	ENGINEER'S SEAL CONSULTANT DRAWING NO. 99943-C04
	EXISTING		LEGEND - PLAN		EXISTING	THE CITY OF WINNIPEG Winnipeg WATER AND WASTE DEPARTMENT 2007 SEWER RENEWALS BY CIPP LINING
	PROPOSED		LEGEND - PROFILE		PROPOSED	SHEET OF 5 12 CITY DRAWING NUMBER 06061

NO. B	ISSUED FOR TENDER	2007/07/19	DA
A	ISSUED FOR REVIEW	2007/07/17	PL
2007/04/11 2007/07/19			