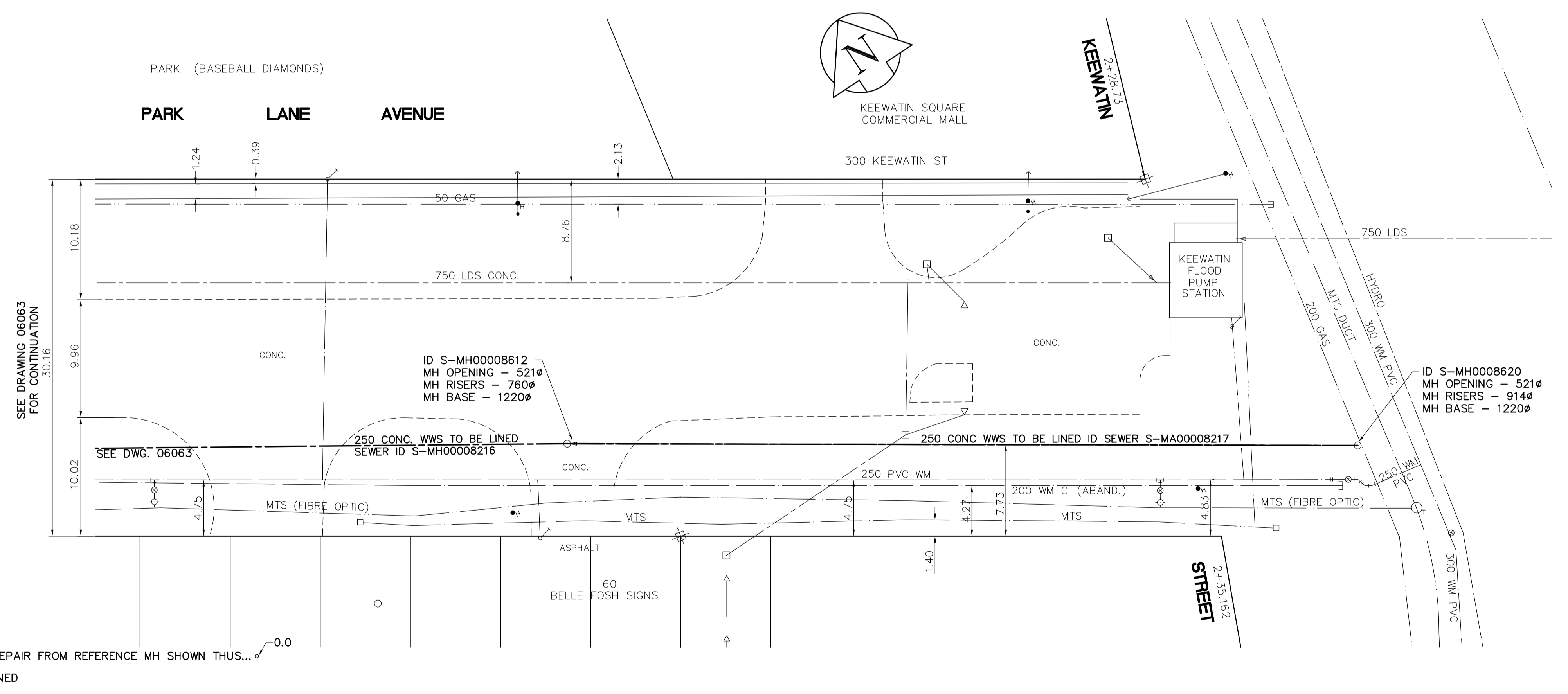


SEWER JUNCTION INFORMATION FROM VIDEO INSPECTION S-MA00008217
DISTANCE FROM S-MH00008620
ZERO SERVICE CONNECTIONS



LEGEND
 -52.0 MEASUREMENT TO REPAIR FROM REFERENCE MH SHOWN THUS...
 --- TO BE LINED

APEGM
 Certificate of Authorization
 Earth Tech Canada Inc.
 No. 730 Expiry: April 30, 2008

METRIC
 WHOLE NUMBERS INDICATE MILLIMETRES
 DECIMALIZED NUMBERS INDICATE METRES

150 mm W.M.	WATERMAIN	150 mm W.M.	HYDRO	150 mm W.M.	WATERMAIN
300mm L.D.S.	LAND DRAINAGE SEWER	300mm L.D.S.	TELEPHONE	300mm L.D.S.	LAND DRAINAGE SEWER
250mm W.W.S.	WASTEWATER SEWER	250mm W.W.S.	CONCRETE	250mm W.W.S.	WASTE WATER SEWER
MANHOLE	MANHOLE	SURVEY BAR	ASPHALT	PROPERTY LINE	PROPERTY LINE
CATCH BASIN	CATCH BASIN	CURB STOP	ASPHALT	PROPERTY LINE	PROPERTY LINE
CURB INLET	CURB INLET	TREE	CONCRETE SIDEWALK	CONCRETE SIDEWALK	CONCRETE SIDEWALK
JUNCTIONS	JUNCTIONS	ANODE	FENCE	FENCE	FENCE
CULVERT	CULVERT				
GAS	GAS				
EXISTING	LEGEND - PLAN	PROPOSED	EXISTING	LEGEND - PLAN	PROPOSED
EXISTING	LEGEND - PROFILE	PROPOSED	EXISTING	LEGEND - PROFILE	PROPOSED

LOCATION APPROVED UNDERGROUND STRUCTURES

SUPV. U/G STRUCTURES DATE COMMITTEE

NOTE:
 LOCATION OF UNDERGROUND STRUCTURES AS SHOWN ARE BASED ON THE BEST INFORMATION AVAILABLE. BUT NO GUARANTEE IS GIVEN THAT ALL EXISTING UTILITIES ARE SHOWN OR THAT THE GIVEN LOCATIONS ARE EXACT. CONFIRMATION OF EXISTENCE AND EXACT LOCATION OF ALL SERVICES MUST BE OBTAINED FROM THE INDIVIDUAL UTILITIES BEFORE PROCEEDING WITH CONSTRUCTION.

B.M. 07-032
 ELEV. 230.108

NO.	REVISIONS	DATE	BY
B	ISSUED FOR TENDER	2007/07/19	DA
A	ISSUED FOR REVIEW	2007/07/17	PL

EARTH TECH
 A tyco INTERNATIONAL LTD. COMPANY
 Earth Tech (Canada) Inc. Winnipeg, Manitoba 204-477-5381

DESIGNED BY	PL	CHECKED BY	GSK
DRAWN BY	GDL	APPROVED BY	
HOR. SCALE:	1:250	RELEASED FOR CONSTRUCTION BY:	K. ZUREK
VERTICAL SCALE:	1:50	DATE	2007/04/11
DATE	2007/04/11	DATE	2007/07/19

ENGINEER'S SEAL
 PROVINCE OF MANITOBA
 ORIGINAL SIGNED BY
K.W. FITCHETT
 2007/07/19
 REGISTERED PROFESSIONAL ENGINEER

CONSULTANT DRAWING NO.
 99943-C06

THE CITY OF WINNIPEG
 Winnipeg WATER AND WASTE DEPARTMENT

2007 SEWER RENEWALS BY CIPP LINING

PARK LANE AVENUE
 2nd M.H. E of PARK LANE ST
 to 1st M.H. E of PARK LANE ST.

SHEET OF
 6 12
 CITY DRAWING NUMBER
06062