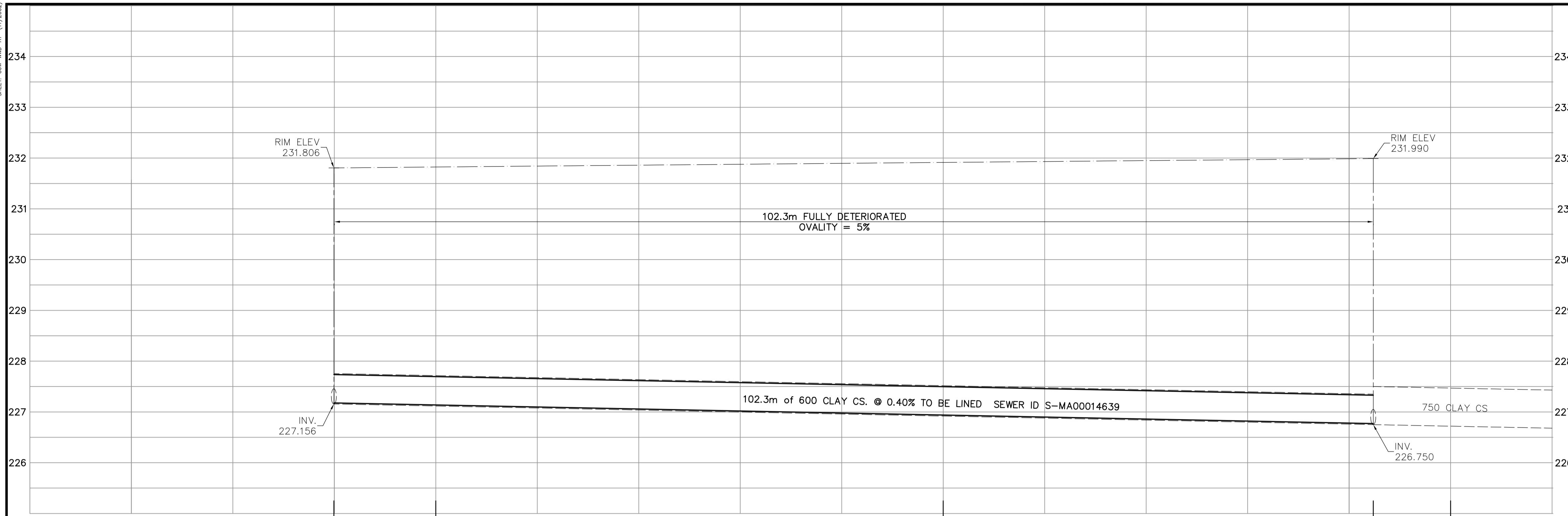
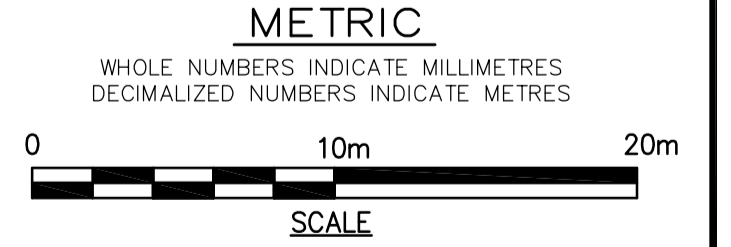
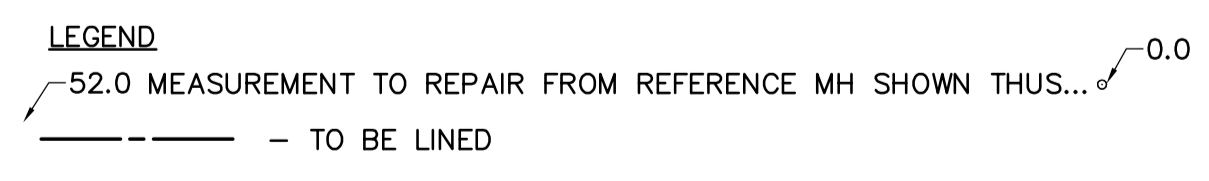
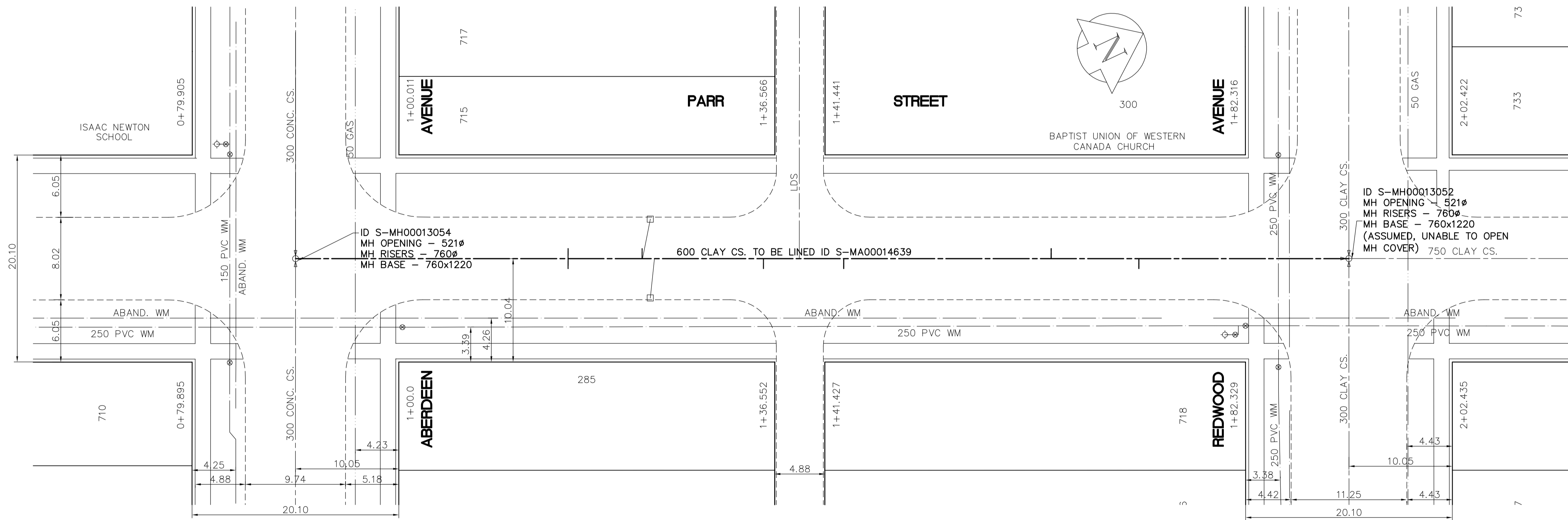


SHEET: COW-WW-AT (17/2002)
FILE NAME: L:\work\9994\3054-00\UID\Comm\9994-09_PARR.dwg
LAYOUT NAME: C-04_D-XX04
PLOTTED BY: ead/arkis
JUL 20, 2007 - 11:28am



NOTE: CHAINAGES SHOWN ARE ALONG THE E.P. OF PARR

SEWER JUNCTION INFORMATION FROM VIDEO INSPECTION S-MA00014639	
DISTANCE FROM S-MH00013054	
26.5m EAST - 100mm CONNECTION NORTH	
26.5m EAST - 100mm CONNECTION SOUTH	
33.7m EAST - 100mm INTRUDING CONNECTION NORTH	
34.9m EAST - 100mm INTRUDING CONNECTION SOUTH	
45.5m EAST - 100mm CONNECTION NORTH	
45.5m EAST - 100mm CONNECTION SOUTH	
49.3m EAST - 150mm CONNECTION NORTH	
53.3m EAST - 100mm CONNECTION SOUTH	
73.5m EAST - 100mm CONNECTION NORTH	
82.0m EAST - 100mm CONNECTION SOUTH	



EXISTING	LEGEND - PLAN	PROPOSED	EXISTING	LEGEND - PLAN	PROPOSED	EXISTING	LEGEND - PROFILE	PROPOSED
	WATERMAIN			HYDRO TELEPHONE			WATERMAIN	
	LAND DRAINAGE SEWER			CONCRETE			LAND DRAINAGE SEWER	
	WASTEWATER SEWER			ASPHALT			WASTE WATER SEWER	
	MANHOLE			PROPERTY LINE			C/P PROFILE	
	CATCH BASIN			SURVEY BAR				
	CURB INLET			CURB STOP				
	JUNCTIONS			TREE				
	CULVERT			ANODE				
	GAS			CONCRETE SIDEWALK				
				FENCE				

LOCATION APPROVED UNDERGROUND STRUCTURES

SUPV. U/G STRUCTURES COMMITTEE

DATE:

NOTE:
LOCATION OF UNDERGROUND STRUCTURES AS SHOWN ARE BASED ON THE BEST INFORMATION AVAILABLE, BUT NO GUARANTEE IS GIVEN THAT ALL EXISTING UTILITIES ARE SHOWN OR THAT THE GIVEN LOCATIONS ARE EXACT. CONFIRMATION OF EXISTENCE AND EXACT LOCATION OF ALL SERVICES MUST BE OBTAINED FROM THE INDIVIDUAL UTILITIES BEFORE PROCEEDING WITH CONSTRUCTION.

NO.	REVISIONS	DATE	BY
B	ISSUED FOR TENDER	2007/07/19	DA
A	ISSUED FOR REVIEW	2007/07/17	PL

EARTH TECH

A tyco INTERNATIONAL LTD. COMPANY
Earth Tech (Canada) Inc. Winnipeg, Manitoba 204-477-5381

DESIGNED BY: PL
CHECKED BY: GSK
DRAWN BY: GDL
APPROVED BY:
HOR. SCALE: 1:250
VERTICAL SCALE: 1:50
RELEASED FOR CONSTRUCTION BY: K. ZUREK
DATE: 2007/04/11
DATE: 2007/07/19

ENGINEER'S SEAL
PROVINCE OF MANITOBA
ORIGINAL SIGNED BY
K.W. FITCHETT
2007/07/19
REGISTERED PROFESSIONAL ENGINEER
CONSULTANT DRAWING NO. 99943-C09

THE CITY OF WINNIPEG
Winnipeg WATER AND WASTE DEPARTMENT

2007 SEWER RENEWALS BY CIPP LINING

PARR STREET
M.H. at ABERDEEN AVENUE TO
M.H. at REDWOOD AVENUE

SHEET OF 9 12
CITY DRAWING NUMBER 06065