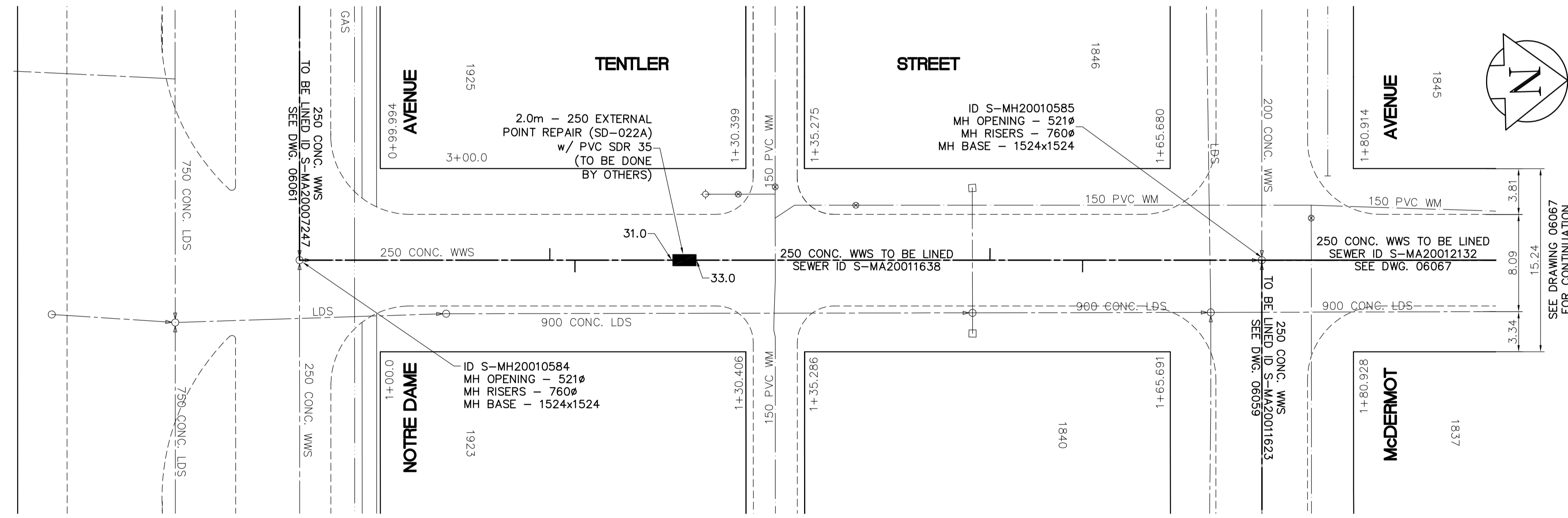


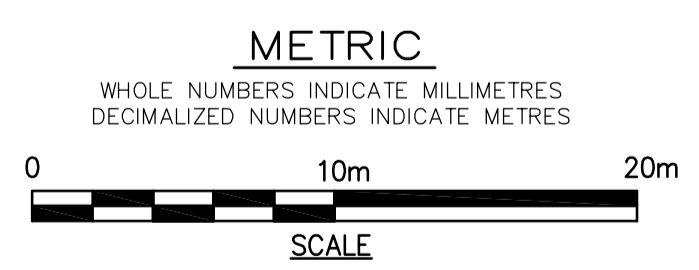
SEWER SERVICE INFORMATION		
ADDRESS	SIZE(mm)	PL DISTANCE JUNCTION TIE
1840 McDERMOT RESIDENTIAL	N/A	NO INFORMATION AVAILABLE
1846 McDERMOT RESIDENTIAL	N/A	NO INFORMATION AVAILABLE
1923 NOTRE DAME RESIDENTIAL	N/A	NO INFORMATION AVAILABLE
1925 NOTRE DAME RESIDENTIAL	N/A	NO INFORMATION AVAILABLE

SEWER JUNCTION INFORMATION FROM VIDEO INSPECTION S-MA20011638	
	DISTANCE FROM S-MH20010584
21.0m NORTH - 100mm CONNECTION WEST	
22.9m NORTH - 100mm CONNECTION EAST	
DISTANCE FROM S-MH20010585	
14.9m SOUTH - 100mm CONNECTION EAST	
22.6m SOUTH - 100mm CONNECTION WEST	



LEGEND
 52.0 MEASUREMENT TO REPAIR FROM REFERENCE MH SHOWN THUS... 0.0
 --- TO BE LINED

APEGM
 Certificate of Authorization
 Earth Tech Canada Inc.
 No. 730 Expiry: April 30, 2008



EXISTING	LEGEND - PLAN	PROPOSED	EXISTING	LEGEND - PLAN	PROPOSED	EXISTING	LEGEND - PROFILE	PROPOSED
	WATERMAIN			WATERMAIN			WATERMAIN	
	HYDRANT			HYDRO TELEPHONE			VALVE	
	CONCRETE			PROPERTY LINE			CURB STOP	
	MANHOLE			CURB INLET			CULVERT	
	LAND DRAINAGE SEWER			SURVEY BAR			TREE	
	300mm L.D.S.			CONCRETE SIDEWALK			FENCE	

LOCATION APPROVED UNDERGROUND STRUCTURES
 SUPV. U/G STRUCTURES DATE COMMITTEE
 NOTE:
 LOCATION OF UNDERGROUND STRUCTURES AS SHOWN ARE BASED ON THE BEST INFORMATION AVAILABLE. BUT NO GUARANTEE IS GIVEN THAT ALL EXISTING UTILITIES ARE SHOWN OR THAT THE GIVEN LOCATIONS ARE EXACT. CONFIRMATION OF EXISTENCE AND EXACT LOCATION OF ALL SERVICES MUST BE OBTAINED FROM THE INDIVIDUAL UTILITIES BEFORE PROCEEDING WITH CONSTRUCTION.

NO.	REVISIONS	DATE	BY
B	ISSUED FOR TENDER	2007/07/19	DA
A	ISSUED FOR REVIEW	2007/07/17	PL

EARTH TECH
 A tyco INTERNATIONAL LTD. COMPANY
 Earth Tech (Canada) Inc. Winnipeg, Manitoba 204-477-5381

DESIGNED BY: PL	CHECKED BY: GSK
DRAWN BY: GDL	APPROVED BY:
HOR. SCALE: 1:250	RELEASED FOR CONSTRUCTION BY: K. ZUREK
VERTICAL SCALE: 1:50	DATE: 2007/04/11

ENGINEER'S SEAL
 PROVINCE OF MANITOBA
 ORIGINAL SIGNED BY
K.W. FITCHETT
 2007/07/19
 REGISTERED PROFESSIONAL ENGINEER

THE CITY OF WINNIPEG
 Winnipeg WATER AND WASTE DEPARTMENT

2007 SEWER RENEWALS BY CIPP LINING

TENTLER STREET
 M.H. at NOTRE DAME AVENUE
 TO M.H. at McDERMOT AVENUE

SHEET OF 10 12
 CITY DRAWING NUMBER 06066

CONSULTANT DRAWING NO. 99943-C10