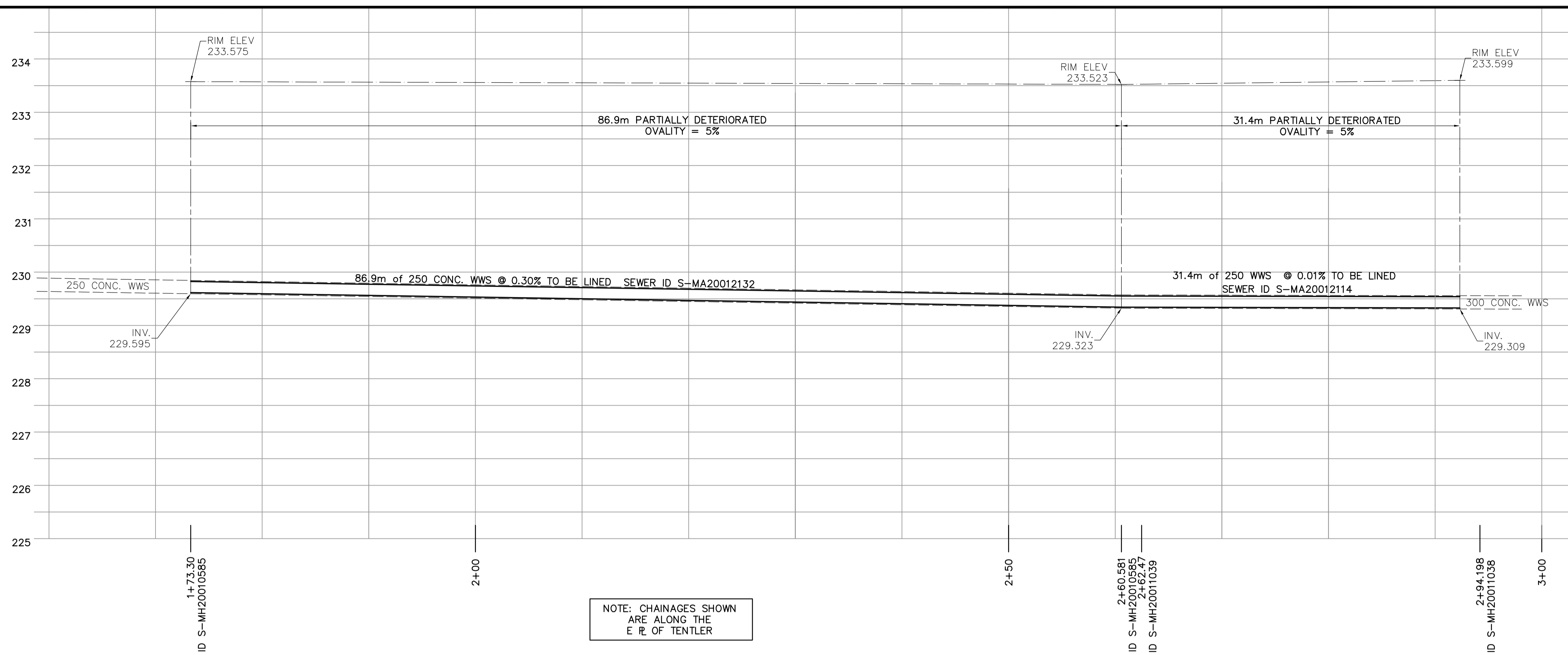
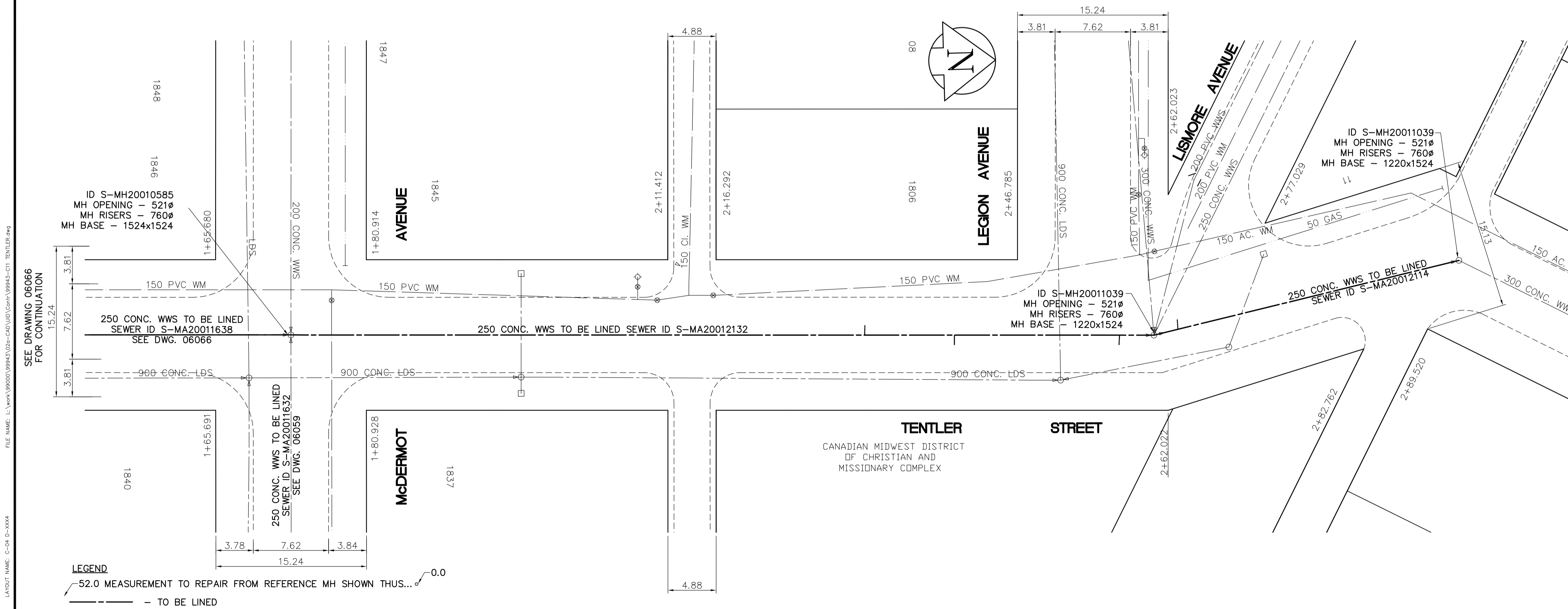


SHEET: COW-WW-A1 (11/2002)

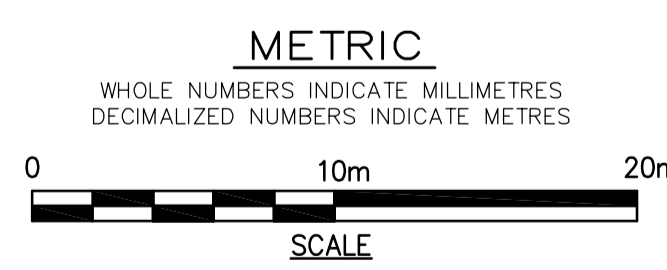


NOTE: CHAINAGES SHOWN ARE ALONG THE E.P. OF TENTLER

SEWER JUNCTION INFORMATION FROM VIDEO INSPECTION S-MA20012132	
DISTANCE FROM S-MH20010584	
58.0m NORTH - 100mm CONNECTION 12 O'CLOCK	
67.1m NORTH - 150mm CONNECTION EAST	
83.81m NORTH - 100mm CONNECTION EAST	
SEWER JUNCTION INFORMATION FROM VIDEO INSPECTION S-MA20012114	
DISTANCE FROM S-MH20011039	
2.5m NORTH - 100mm INTRUDING CONNECTION WEST -	



**APEGM**  
 Certificate of Authorization  
 Earth Tech Canada Inc.  
 No. 730 Expiry: April 30, 2008



150 mm W.M.	WATERMAIN	150 mm W.M.	HYDRANT	150 mm W.M.	WATERMAIN
300mm L.D.S.	LAND DRAINAGE SEWER	300mm L.D.S.	HYDRANT VALVE	300mm L.D.S.	LAND DRAINAGE SEWER
250mm W.W.S.	WASTEWATER SEWER	250mm W.W.S.	CONCRETE ASPHALT	250mm W.W.S.	WASTE WATER SEWER
MANHOLE		PROPERTY LINE		PROPERTY LINE	
CATCH BASIN		SURVEY BAR		SURVEY BAR	
CURB INLET		CURB STOP		CURB STOP	
JUNCTIONS		TREE		TREE	
CULVERT		ANODE		ANODE	
GAS		CONCRETE SIDEWALK		CONCRETE SIDEWALK	
EXISTING	LEGEND - PLAN	PROPOSED	EXISTING	LEGEND - PROFILE	PROPOSED

**LOCATION APPROVED UNDERGROUND STRUCTURES**

SUPV. U/G STRUCTURES DATE COMMITTEE

NOTE:  
 LOCATION OF UNDERGROUND STRUCTURES AS SHOWN ARE BASED ON THE BEST INFORMATION AVAILABLE. BUT NO GUARANTEE IS GIVEN THAT ALL EXISTING UTILITIES ARE SHOWN OR THAT THE GIVEN LOCATIONS ARE EXACT. CONFIRMATION OF EXISTENCE AND EXACT LOCATION OF ALL SERVICES MUST BE OBTAINED FROM THE INDIVIDUAL UTILITIES BEFORE PROCEEDING WITH CONSTRUCTION.

B.M. 07-032	BM	ELEV. 230.108	
B	ISSUED FOR TENDER	2007/07/19	DA
A	ISSUED FOR REVIEW	2007/07/17	PL
NO.	REVISIONS	DATE	BY

**EARTH TECH**  
 A tyco INTERNATIONAL LTD. COMPANY  
 Earth Tech (Canada) Inc. Winnipeg, Manitoba 204-477-5381

DESIGNED BY	PL	CHECKED BY	GSK
DRAWN BY	GDL	APPROVED BY	
HOR. SCALE: 1:250		RELEASED FOR CONSTRUCTION BY:	
VERTICAL SCALE: 1:50		K. ZUREK	
DATE	2007/04/11	DATE	2007/07/19

ENGINEER'S SEAL  
 PROVINCE OF MANITOBA  
 ORIGINAL SIGNED BY  
**K.W. FITCHETT**  
 2007/07/19  
 REGISTERED PROFESSIONAL ENGINEER  
 CONSULTANT DRAWING NO.  
 99943-C11

**THE CITY OF WINNIPEG**  
 Winnipeg WATER AND WASTE DEPARTMENT

**2007 SEWER RENEWALS BY CIPP LINING**

TENTLER STREET  
 M.H. at McDERMOT AVENUE WEST  
 TO 2nd M.H. N of LEGION AVENUE

SHEET OF  
 11 12  
 CITY DRAWING NUMBER  
**06067**

JUL 20, 2007 - 11:29am

LAYOUT NAME: C-04 D-0004

FILE NAME: L:\work\9994\0206-CAD\UID\Comm\9994-C11 TENTLER.dwg

SEE DRAWING 06066 FOR CONTINUATION

LEGEND  
 -52.0 MEASUREMENT TO REPAIR FROM REFERENCE MH SHOWN THUS...  
 - TO BE LINED