

- NOTES:**
1. BASELINE = BACK OF PROPOSED CURB LINE LOCATED 11.0 m NORTH OF WESTBOUND MEDIAN BACK OF CURB. STA 1+120 = NORTHWEST PROPERTY LINE OF WEDGEWOOD DR. & UNIVERSITY CRESCENT.

150 mm W.M.	WATER MAIN	150 mm W.M.	HYDRO	150 mm W.M.	WATER MAIN	150 mm W.M.
⊕	HYDRANT VALVE	⊕	M.T.S.	⊕	HYDRANT VALVE	⊕
⊗	LAND DRAINAGE SEWER	⊗	CONCRETE	⊗	LAND DRAINAGE SEWER	⊗
⊙	WASTE WATER SEWER	⊙	ASPHALT	⊙	WASTE WATER SEWER	⊙
○	MANHOLE	●	PLANING	○	⊕ PROFILE	○
□	CATCH BASIN	■	PAVING STONES	□	NORTH/WEST GUTTER	□
▽	CURB INLET	▼	PARTIAL DEPTH REPAIR	▽	SOUTH/EAST GUTTER	▽
⊕	JUNCTIONS	⊕	PROPERTY LINE	⊕	TINTED CONCRETE	⊕
⊕	CULVERT	⊕	SURVEY BAR	⊕		⊕
⊕	GAS	⊕	PARAPLEGIC RAMP	⊕		⊕
---	EXISTING LEGEND-PLAN	---	PROPOSED	---	EXISTING LEGEND-PROFILE	---

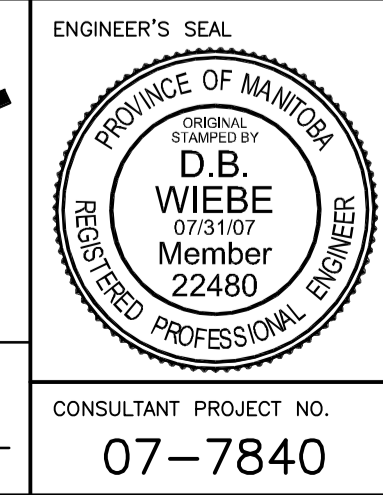
UNDERGROUND STRUCTURES

SUPPLY U/G STRUCTURES COMMITTEE DATE

NOTE:
LOCATION OF UNDERGROUND STRUCTURES AS SHOWN ARE BASED ON THE BEST INFORMATION AVAILABLE. BUT NO GUARANTEE IS GIVEN THAT ALL EXISTING UTILITIES ARE SHOWN OR THAT THE GIVEN LOCATIONS ARE EXACT. CONFIRMATION OF EXISTENCE AND EXACT LOCATION OF ALL SERVICES MUST BE OBTAINED FROM THE INDIVIDUAL UTILITIES BEFORE PROCEEDING WITH CONSTRUCTION.

B.M. ELEV.	76-074 233.165
NO.	REVISIONS
4	ISSUED FOR TENDER 07-31-07 D.B.W.
3	ISSUED FOR REVIEW 07-20-07 D.B.W.
2	ISSUED FOR REVIEW 06-28-07 D.B.W.
1	ISSUED FOR REVIEW 06-20-07 D.B.W.
DATE	JUNE 15 / 2007

DESIGNED BY R.T.P.
DRAWN BY P.M.W./A.J.P.
CHECKED BY D.B.W.
APPROVED BY



THE CITY OF WINNIPEG
TRANSIT DEPARTMENT

ON STREET TRANSIT
PRIORITY IMPROVEMENTS - PHASE 1

PEMBINA CORRIDOR
PEMBINA HWY @ UNIVERSITY CRESS

CITY DRAWING NUMBER
SHEET 1 OF 14

CONSULTANT PROJECT NO.
07-7840