

- NOTES:
1. PREFORMED VEHICLE DETECTOR LOOP TO BE INSTALLED (BY OTHERS) PRIOR TO CONCRETE PAVEMENT CONSTRUCTION.

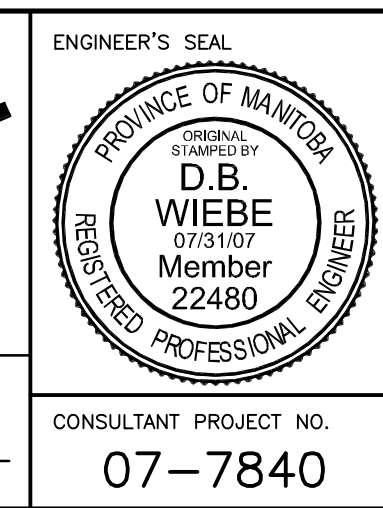
BENCH MARK  
 E side St. Anne's Rd. @ Hull Ave., Tblt. 5.6 m S. of  
 production of N.L. of Hull Ave., & 7 m W. of E.L. of St.  
 Anne's Rd.

150 mm W.M.	WATER MAIN	150 mm W.M.	HYDRO	150 mm W.M.	WATER MAIN	150 mm W.M.
⊕	HYDRANT	⊕	M.T.S.	+	HYDRANT	+
⊗	VALVE	⊗	CONCRETE	+	VALVE	+
300 mm L.D.S.	LAND DRAINAGE SEWER	300 mm L.D.S.	ASPHALT	300 mm L.D.S.	LAND DRAINAGE SEWER	300 mm L.D.S.
250 mm W.W.S.	WASTE WATER SEWER	250 mm W.W.S.	PLANING	250 mm W.W.S.	WASTE WATER SEWER	250 mm W.W.S.
○	MANHOLE	●	SIDEWALK	---	MANHOLE	---
□	CATCH BASIN	■	PAVING STONES	▨	CATCH BASIN	▨
▽	CURB INLET	▽	PARTIAL DEPTH REPAIR	▨	CURB INLET	▽
+	JUNCTIONS	+	PROPERTY LINE	---	JUNCTIONS	+
⊞	CULVERT	⊞	SURVEY BAR	---	CULVERT	⊞
---	GAS	---	PARAPLEGIC RAMP	---	GAS	---
---	EXISTING	---	EXISTING	---	EXISTING	---
---	LEGEND-PLAN	---	PROPOSED	---	LEGEND-PROFILE	---
---	PROPOSED	---	PROPOSED	---	PROPOSED	---

UNDERGROUND STRUCTURES	DATE
SUPPLY U/G STRUCTURES COMMITTEE	
NOTE:	
LOCATION OF UNDERGROUND STRUCTURES AS SHOWN ARE BASED ON THE BEST INFORMATION AVAILABLE. BUT NO GUARANTEE IS GIVEN THAT ALL EXISTING UTILITIES ARE SHOWN OR THAT THE GIVEN LOCATIONS ARE EXACT. CONFIRMATION OF EXISTENCE AND EXACT LOCATION OF ALL SERVICES MUST BE OBTAINED FROM THE INDIVIDUAL UTILITIES BEFORE PROCEEDING WITH CONSTRUCTION.	

B.M. ELEV.	54-010 231.064
NO.	REVISIONS
4	ISSUED FOR TENDER 07-31-07 D.B.W.
3	ISSUED FOR REVIEW 07-20-07 D.B.W.
2	ISSUED FOR REVIEW 06-28-07 D.B.W.
1	ISSUED FOR REVIEW 06-20-07 D.B.W.
DATE	BY
DATE	JUNE 15 / 2007

DESIGNED BY	R.T.P.
DRAWN BY	P.M.W./A.J.P.
CHECKED BY	D.B.W.
APPROVED BY	
HOR. SCALE	1:250
VERTICAL	1:10
RELEASED FOR CONSTRUCTION	DATE



**THE CITY OF WINNIPEG**  
 TRANSIT DEPARTMENT

ON STREET TRANSIT  
 PRIORITY IMPROVEMENTS - PHASE 1

ST ANNE'S CORRIDOR  
 ST ANNE'S RD @ KINGSWOOD AVE

CITY DRAWING NUMBER  
 SHEET 11 OF 14

CONSULTANT PROJECT NO.  
 07-7840