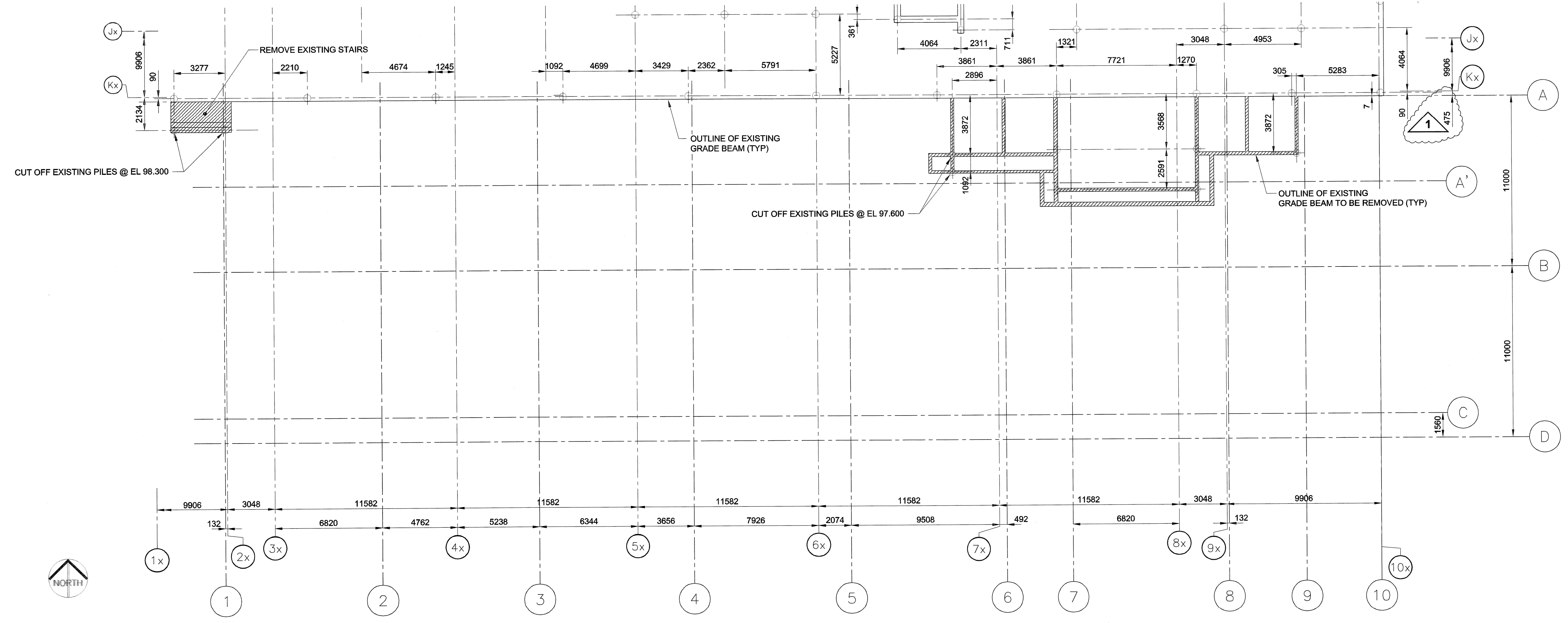


UMA FILE NAME: F853-001-01_01-S-1002_RX.dwg
 ADDRESS: 999 Sargent St. Winnipeg, Manitoba
 PROJECT No: F853-001-01
 DESCRIPTION: Existing Pile & Grade Beam Layout
 DATE: 2007.07.23
 FILE NAME: F853-001-01_01-S-2002_RX.dwg



EXISTING PILE LAYOUT
 0 1500 3000 4500 mm SCALE 1:150

UMA | AECOM
 © 2007 UMA ENGINEERING LTD. ALL RIGHTS RESERVED.

APEGM
 Certificate of Authorization
 UMA Engineering Ltd. (MB)
 No. 256 Date: Aug 10, 2007

mp ced blm
 DRN CHK DES ENG IDR
 UMA | AECOM REVIEW

1	ISSUED FOR ADDENDUM #1	MP	07/08/10
0	ISSUED FOR TENDER	MP	07/07/23
NO.	REVISION/DESCRIPTION	BY	DATE

SEALS

PROVINCE OF MANITOBA
Plan
 B.L. LAU
 REGISTERED PROFESSIONAL ENGINEER
 AUG 10, 2007

DRAWN BY: MP CHECKED BY: USER APPROVAL
 DATE: 2007.02.21

CITY OF WINNIPEG
 PLANNING, PROPERTY & DEVELOPMENT DEPARTMENT
 CIVIC ACCOMMODATIONS DIVISION
 300 - 65 GARRY ST. R3C 4K4

PROJECT
 Construction of Cindy Kassen
 Recreation Complex Facility
 Enhancement Project
 999 Sargent St. Winnipeg, Manitoba

SHEET TITLE
 Structural
 Demolition Plan
 Existing Pile and Grade Beam Layout

SCALE AS NOTED	PROJECT NO. 2005-059	SHEET NO. S1.2
-------------------	-------------------------	--------------------------

DRAWING SHEET SIZE: A1 (841mm x 594mm) PLOT 1:1