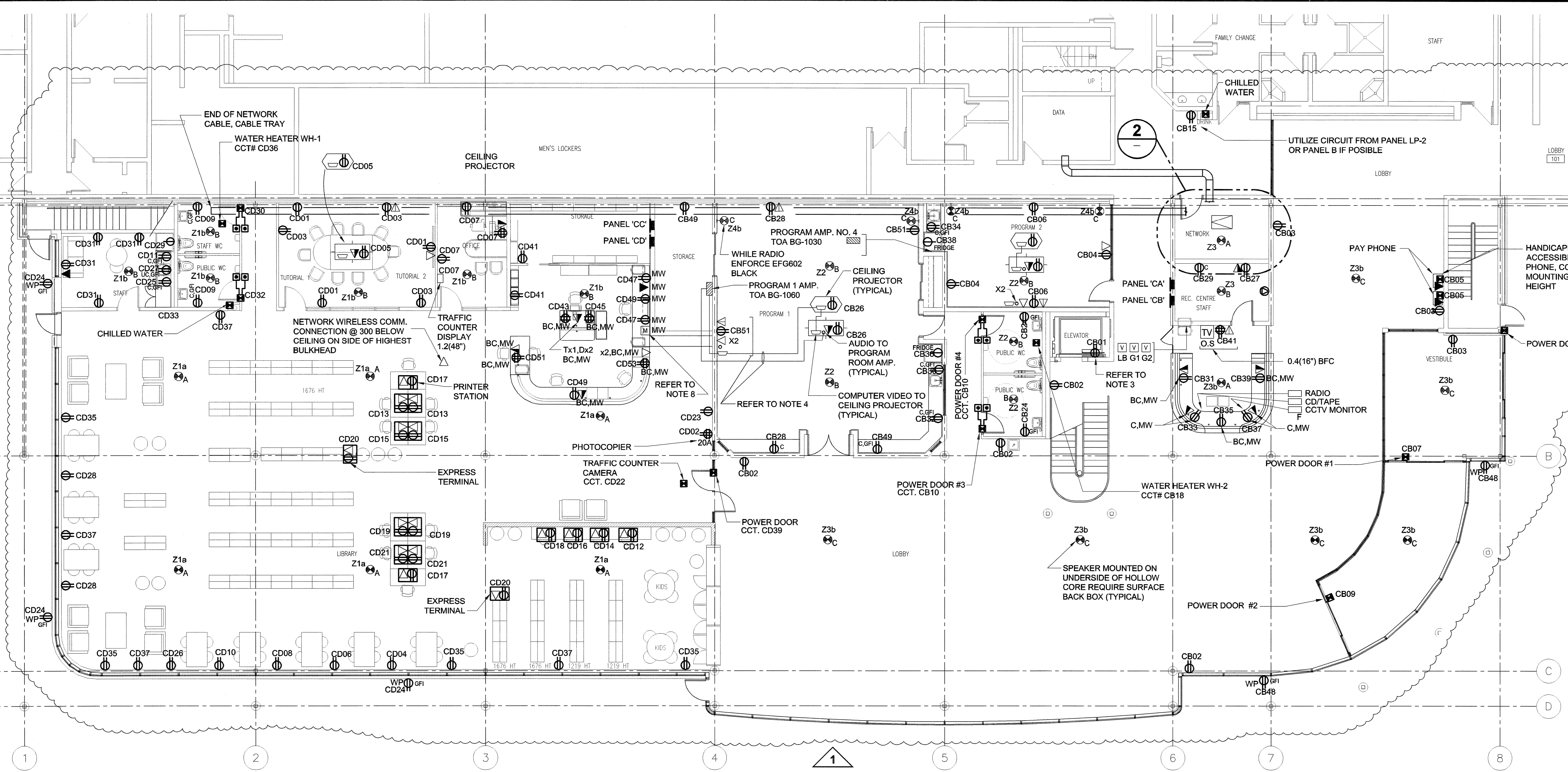
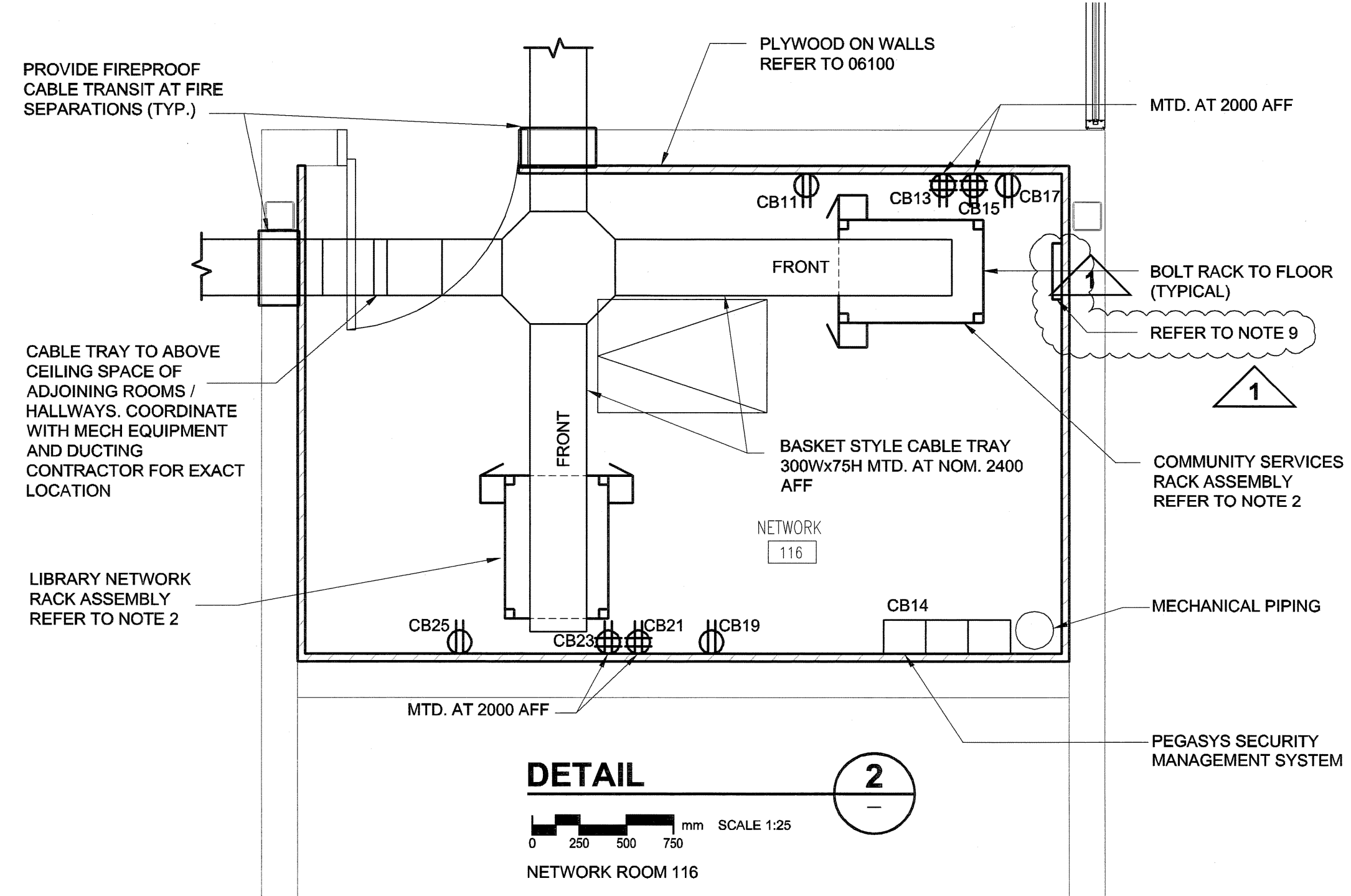
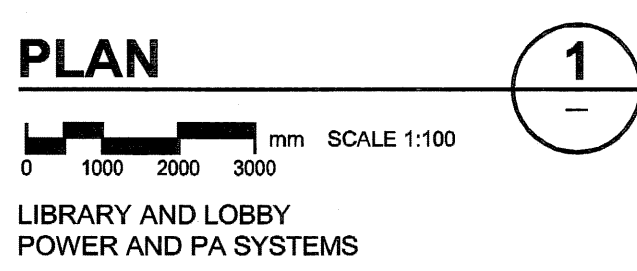


FILE NAME: F953-001-01-E-2004_RX.dwg
 DATE: 2007.02.21
 DESCRIPTION: Second Floor Demolition
 PROJECT No: F953-001-01
 ADDRESS: 999 Sargent St. Winnipeg, Manitoba
 PLOT: 0718022.238:13 PIM
 UMA FILE NAME: F953-001-01-E-2003_RX.dwg



- NOTES:**
- COORDINATE CONNECTION REQUIREMENTS FOR HARD WIRED DEVICES WITH EQUIPMENT SUPPLIER (TYPICAL).
 - EQUIPMENT RACK ACCEPTABLE MANUFACTURES:
 CABLE TALK, PANDUIT, MIDDLE ATLANTIC
 STANDARD OF ACCEPTANCE:
 - CABLE TALK 44U (82.5"), 4 POST RACK CTR-D-1977-P36
 - C/W TWO FULL HEIGHT VERTICAL CABLE MANAGEMENT PER RACK, 5"x6" WITH DOOR, CTR-CMS-16
 - TWO FULL DEPTH MOUNTING REAYS, PULLOUT SLIDES.
 - REFER TO ELEVATOR SHOP DRAWINGS FOR EXACT LOCATION OF CONVENIENCE RECEPT., MAINTENANCE LIGHTING AND MAIN DISCONNECT SWITCH.
 - REFER TO DETAILS FOR OVERHEAD PROJECTOR, AUDIO AND COMPUTER VIDEO CONNECTION IN TUTORIAL AND PROGRAM ROOMS (TYPICAL).
 - REFER TO MILLWORK DRAWINGS TO CONFIRM LOCATIONS FOR ALL OUTLETS INSTALLED IN OR ON MILLWORK.
 - TRAFFIC COUNTER SYSTEM AND REMOTE DISPLAY BASED ON CCTV TECHNOLOGY, ENTRY/EXIT DISTINGUISHABLE.
 STANDARD OF ACCEPTANCE:
 AMES COPOTTER ELECTRIC VDP-100 VIDEO-EYE PEOPLE COUNTER, MOUNT L.V. TRANSFORMER IN JUNCTION BOX IN CEILING SPACE. AVAILABLE LOCALLY THROUGH SDS SECURITY. SUBMIT SHOP DRAWING.
 - SPEAKERS:
 TYPE A: TOA MODEL F122
 TYPE B: RAULAND ACC-1401 C/W ROUND BACK BOX, TRANSFORMER AND T-BAR BRACKET
 TYPE C: SOUNDTUBE MODEL RS5001 C/W HANGING ACCESSORY CC10B
 TYPE D: KDM MODEL SP810
 TYPE E: KDM MODEL SP510
 - PAGING MICROPHONE: TOA MODEL PM-6600
 - 600x100x6mm COPPER GROUND BAR ON ISOLATED SUPPORTS AT 2300mm AFF. CONNECT TO MAIN DISTRIBUTION GROUND BUS WITH INSULATED #10 AWG GROUND WIRE IN CONDUIT.



UMA | AECOM

© 2007 UMA ENGINEERING LTD. ALL RIGHTS RESERVED.

APECM
 Certificate of Authorization
 UMA Engineering Ltd. (MB)
 No. 256 Date: Aug 21, 2007

DRN	CHK	DES	ENG	IDR

UMA | AECOM REVIEW

NO.	REVISION/DESCRIPTION	BY	DATE
1	ISSUED FOR ADDENDUM #2	QL	07/08/21
0	ISSUED FOR TENDER	QL	07/07/23

SEALS

PROVINCE OF MANITOBA
 S.K. SMART
 Member
 20996
 Registered Professional Engineer

DRAWN BY: [] CHECKED BY: [] APPROVED: []
 DATE: 2007.02.21 USER APPROVAL

CITY OF WINNIPEG
 PLANNING, PROPERTY &
 DEVELOPMENT DEPARTMENT
 CIVIC ACCOMMODATIONS DIVISION
 300 - 65 GARRY ST. R3C 4K4

PROJECT
**Construction of Cindy Klassen
 Recreation Complex Facility
 Enhancement Project**
 999 Sargent St. Winnipeg, Manitoba

SHEET TITLE
**Electrical
 Main Floor - Library & Lobby Plan
 Power and PA Systems**

SCALE 1:100	PROJECT NO. 2005-059	SHEET NO. E2.3
----------------	-------------------------	-------------------

DRAWING SHEET SIZE: A1 (841mm x 594mm) PLOT 1:1