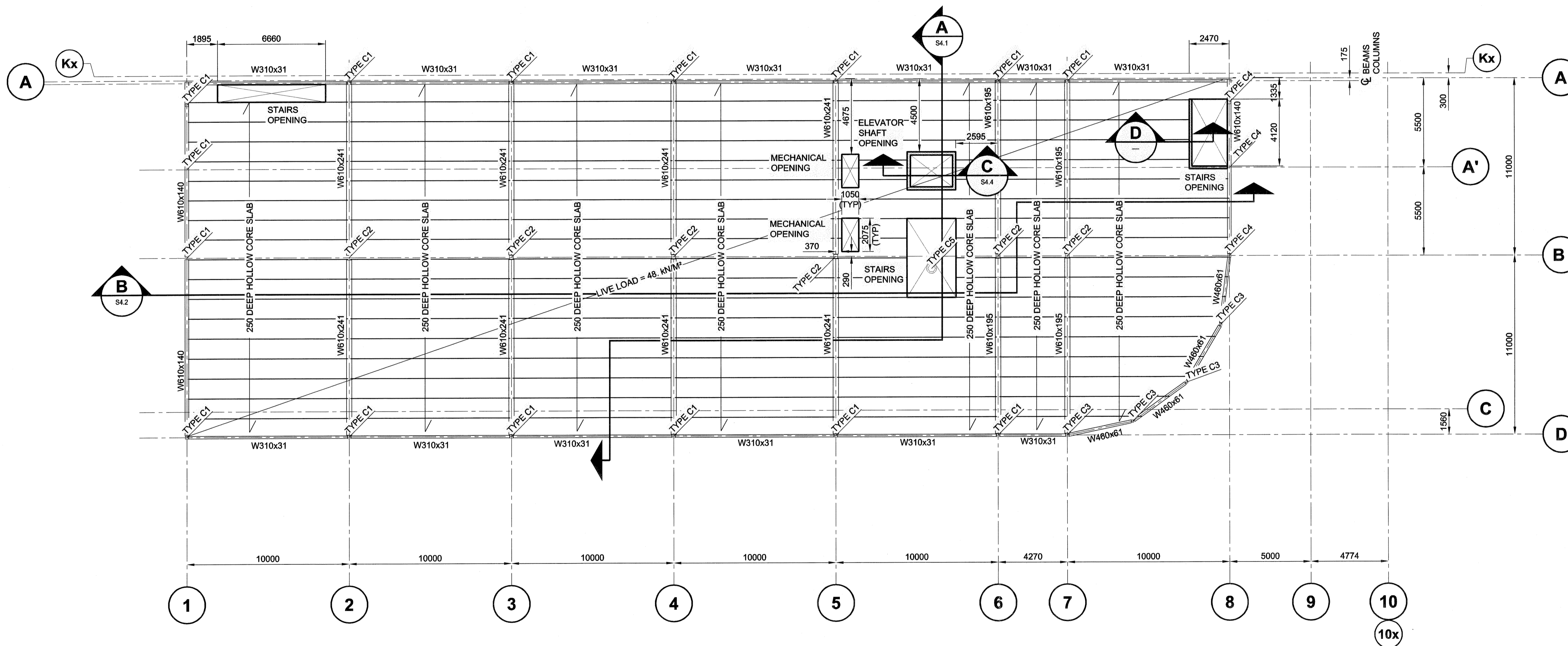


NOTE:

USE HOLLOWCORE HANGER FOR STAIRS AND MECHANICAL OPENINGS.

HOLLOWCORE SUPPLIER TO DETERMINE HOLLOWCORE HANGER MEMBER SIZE AT OPENINGS.

SEE ARCHITECTURAL TO LOCATE MECHANICAL AND STAIR OPENINGS AND DIMENSIONS.



SECOND FLOOR FRAMING PLAN

0 1500 3000 4500 mm SCALE 1:150

DESIGN LOADS:
LIVE LOAD = 4.8 kN/M²
DEAD LOAD = 6.7 kN/M²
TOTAL LOAD = 11.5 kN/M²

UMA | AECOM

© 2007 UMA ENGINEERING LTD. ALL RIGHTS RESERVED.

APEGM
Certificate of Authorization
UMA Engineering Ltd. (MB)
No. 256 Date: July 23, 2007

DRN CHK DES ENG IDR
UMA | AECOM REVIEW

NO.	REVISION/DESCRIPTION	BY	DATE
0	ISSUED FOR TENDER	MP	07/07/23

PROVINCE OF MANITOBA
B.L. LAU
REGISTERED PROFESSIONAL ENGINEER
July 23, 2007

DRAWN BY: MP CHECKED BY: USER APPROVAL APPROVED

DATE: 2007.02.21

CITY OF WINNIPEG
PLANNING, PROPERTY &
DEVELOPMENT DEPARTMENT
CIVIC ACCOMMODATIONS DIVISION
300 - 65 GARRY ST. R3C 4K4

PROJECT
Construction of Cindy Klassen
Recreation Complex Facility
Enhancement Project
999 Sargent St. Winnipeg, Manitoba

SHEET TITLE
Structural
Second Floor Framing
Plan and Layout

SCALE: AS NOTED PROJECT NO: 2005-059 SHEET NO: S2.4

DRAWING SHEET SIZE: A1 (841mm x 594mm) PLOT 1:1