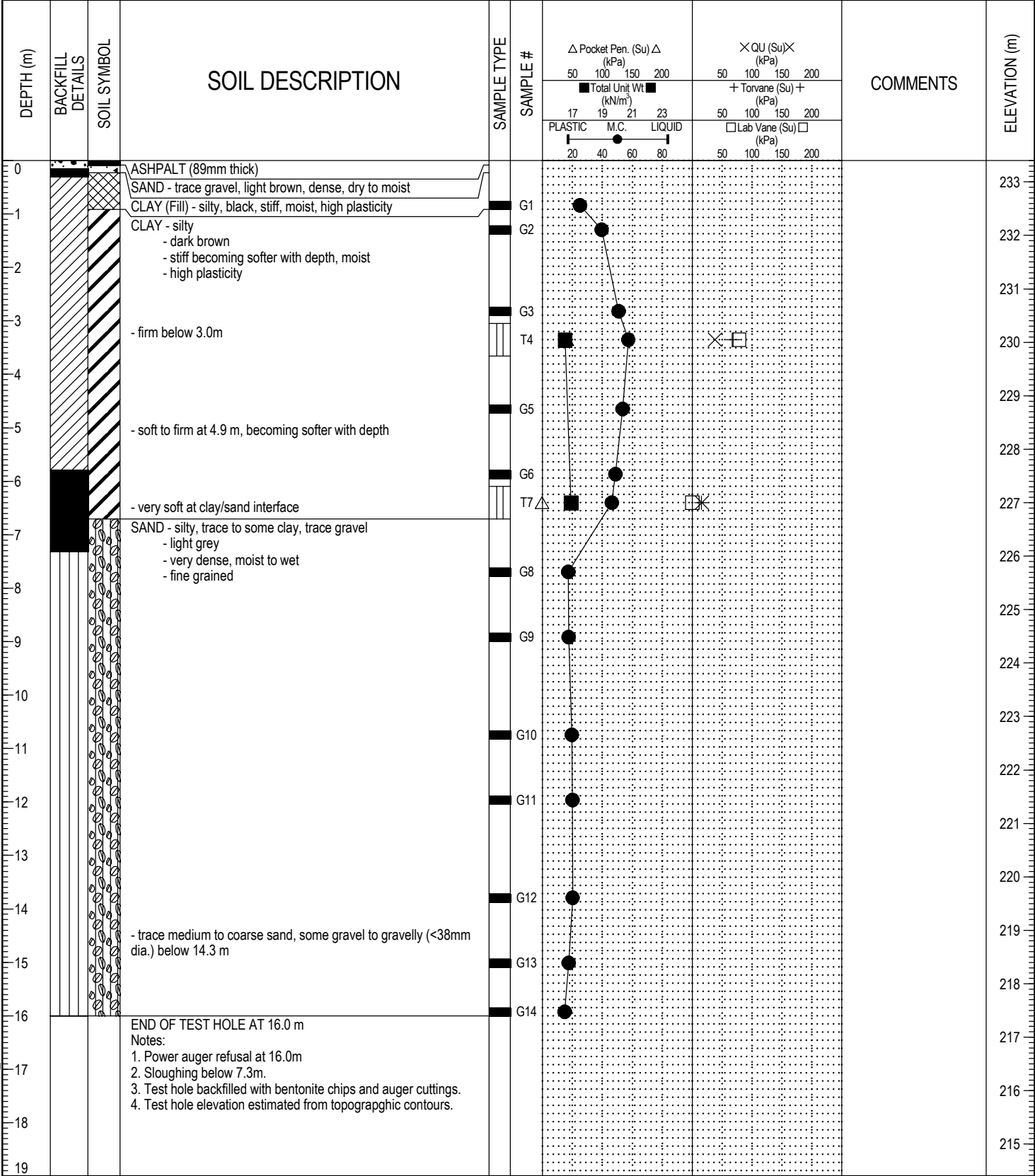


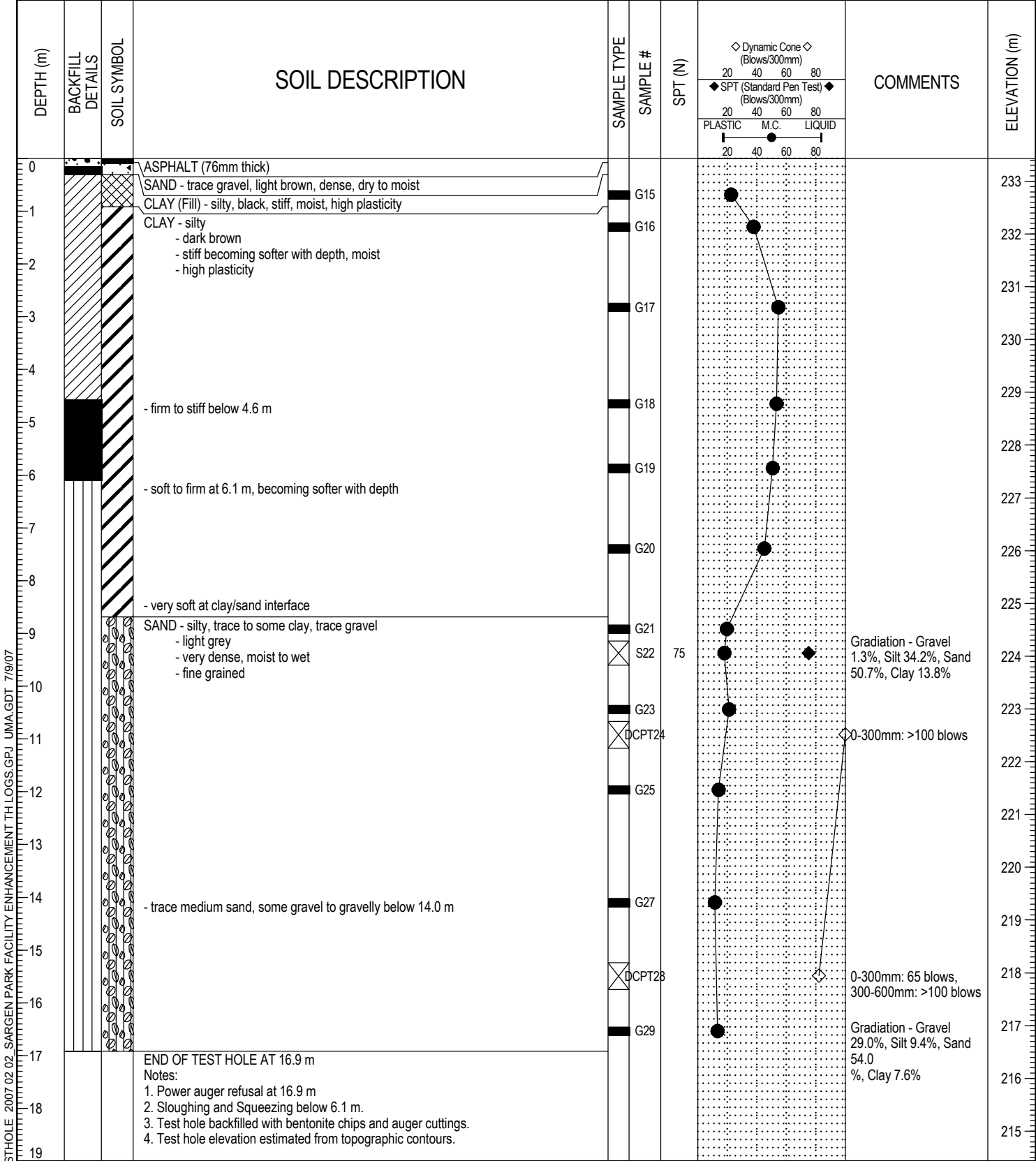
PROJECT: Sargent Park Rec Centre - Facility Enhancement		CLIENT: Neil Cooper Architect		TESTHOLE NO: TH07-01		
LOCATION: Proposed Running Track/Parking Lot		METHOD: 125mm SSA, B4 Truck Mounted		PROJECT NO.: F953 001 01		
CONTRACTOR: Maple Leaf Drilling		METHOD: 125mm SSA, B4 Truck Mounted		ELEVATION (m): 233.401		
SAMPLE TYPE	GRAB	SHELBY TUBE	SPLIT SPOON	BULK	NO RECOVERY	CORE
BACKFILL TYPE	BENTONITE	GRAVEL	SLOUGH	GROUT	CUTTINGS	SAND



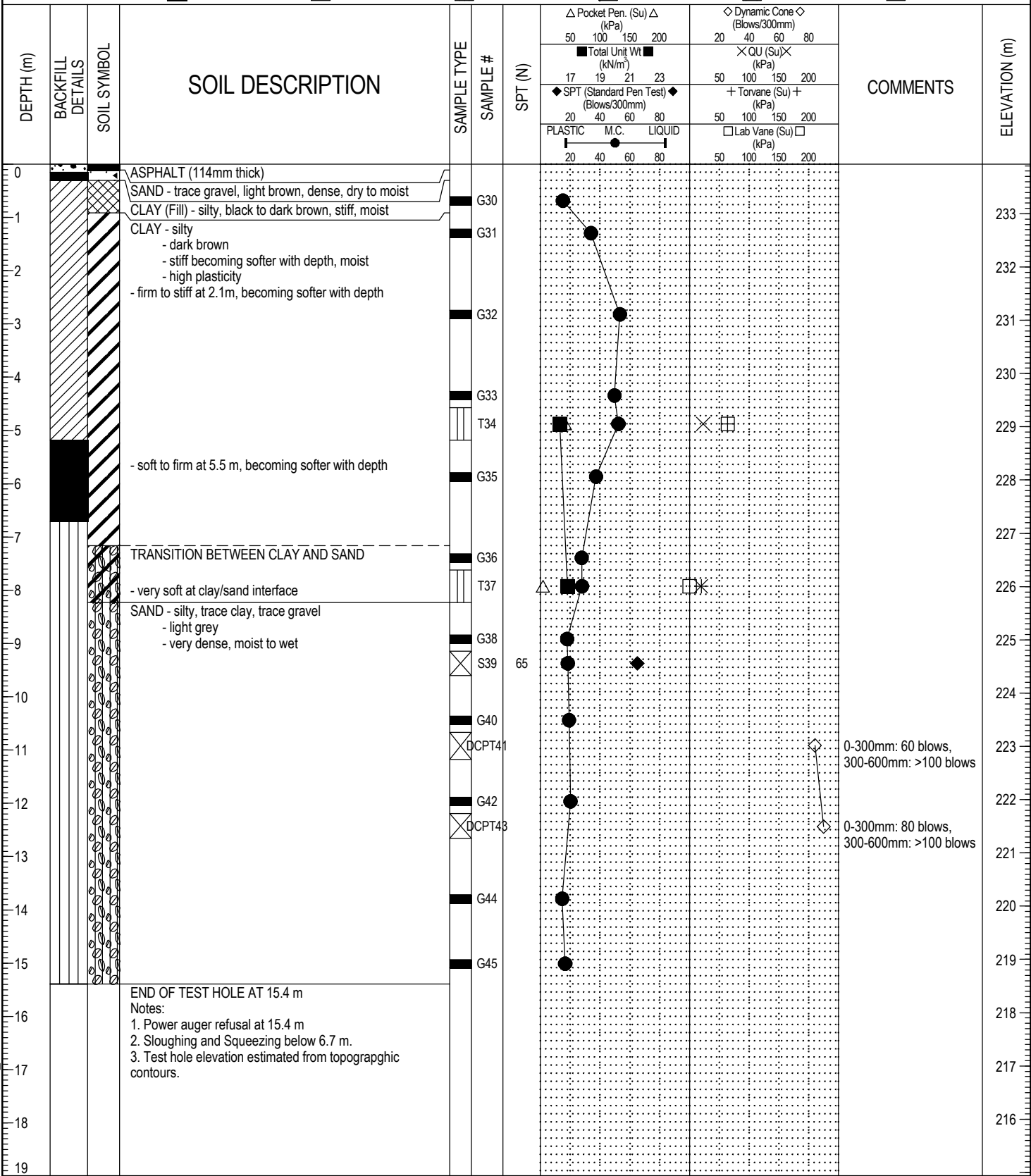
LOG OF TESTHOLE 2007 02 SARGEN PARK FACILITY ENHANCEMENT TH LOGS.GPJ UMA.GDT 7/9/07

LOGGED BY: S. Peters	COMPLETION DEPTH: 16.0 m
REVIEWED BY: Nelson Ferreira	COMPLETION DATE: 1/31/07
PROJECT ENGINEER: Nelson Ferreira	Page 1 of 1

PROJECT: Sargent Park Rec Centre - Facility Enhancement		CLIENT: Neil Cooper Architect		TESTHOLE NO: TH07-02		
LOCATION: Proposed Running Track/Parking Lot				PROJECT NO.: F953 001 01		
CONTRACTOR: Maple Leaf Drilling		METHOD: 125mm SSA, B4 Truck Mounted		ELEVATION (m): 233.431		
SAMPLE TYPE	GRAB	SHELBY TUBE	SPLIT SPOON	BULK	NO RECOVERY	CORE
BACKFILL TYPE	BENTONITE	GRAVEL	SLOUGH	GROUT	CUTTINGS	SAND



PROJECT: Sargent Park Rec Centre - Facility Enhancement		CLIENT: Neil Cooper Architect		TESTHOLE NO: TH07-03		
LOCATION: Proposed New Library				PROJECT NO.: F953 001 01		
CONTRACTOR: Maple Leaf Drilling		METHOD: 125mm SSA, B4 Truck Mounted		ELEVATION (m): 233.931		
SAMPLE TYPE	GRAB	SHELBY TUBE	SPLIT SPOON	BULK	NO RECOVERY	CORE
BACKFILL TYPE	BENTONITE	GRAVEL	SLOUGH	GROUT	CUTTINGS	SAND



LOG OF TESTHOLE 2007 02 SARGEN PARK FACILITY ENHANCEMENT TH LOGS.GPJ UMA.GDT 7/9/07