



SHINGLE NEW DETAIL STRIP OVER PRE-FINISHED METAL DRIP FLASHING. SEAL NEW AIR/VAPOUR BARRIER TO EXISTING, LAP MINIMUM 150mm

PROVIDE NEW PREFINISHED DRIP FLASHING (COLOUR TO MATCH PANEL). SHINGLE DRIP FLASHING UNDER A DETAIL STRIP OF AIR/VAPOUR BARRIER MEMBRANE

NEW WINDOW INFILL

40mm X 300mm WIDE PRE-FINISHED METAL WALL PANEL
50mm SEMI-RIGID INSULATION
50mm Z GIRT
SELF-ADHESIVE AIR/VAPOUR BARRIER
190mm LIGHTWEIGHT CONCRETE BLOCK

PROVIDE NEW PREFINISHED DRIP FLASHING (COLOUR TO MATCH PANEL). SHINGLE DRIP FLASHING UNDER A DETAIL STRIP OF AIR/VAPOUR BARRIER MEMBRANE

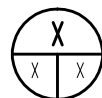
LAP NEW AIR/VAPOUR BARRIER OVER EXISTING AND SEAL. REMOVE ±150mm OF EXISTING INSULATION (AS REQUIRED) TO ENSURE ABILITY TO SEAL TO EXISTING.

PROVIDE SOFT JOINT AT EXISTING CONCRETE BEAM/STRUCTURE. CUT BLOCK AS/IF REQUIRED TO ENSURE 10mm MINIMUM JOINT.

INTERIOR CONCRETE BLOCK FINISH TO MATCH EXISTING - SITE CONFIRM (IE: PAINT)

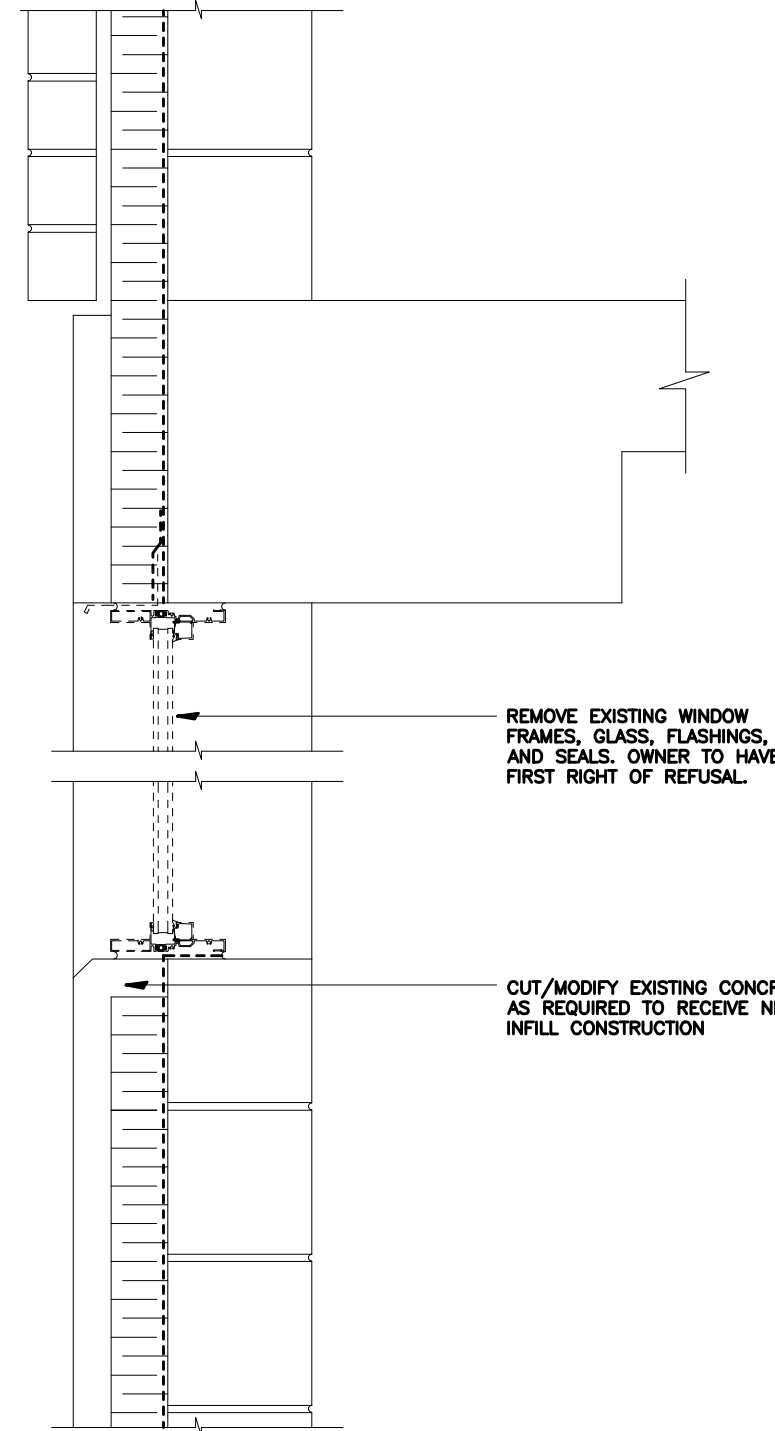
NOTE:
1. SITE CONFIRM ALL EXISTING CONSTRUCTION AND DIMENSIONS PRIOR TO CONSTRUCTION.
2. PROVIDE APPROPRIATE FIRE-STOPPING AT ALL PENETRATIONS THROUGH RATED ASSEMBLIES.

note: all new infill shown is non-combustible



SECTION AT NEW WINDOW INFILL

SCALE 1 : 10



REMOVE EXISTING WINDOW FRAMES, GLASS, FLASHINGS, AND SEALS. OWNER TO HAVE FIRST RIGHT OF REFUSAL.

CUT/MODIFY EXISTING CONCRETE AS REQUIRED TO RECEIVE NEW INFILL CONSTRUCTION

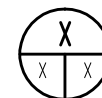
NO.	REVISION/DESCRIPTION	BY	DATE
SEALS			

DRAWN BY	CHECKED BY	APPROVED
DATE 10 JULY 2007	USER APPROVAL	

 CITY OF WINNIPEG
PLANNING, PROPERTY &
DEVELOPMENT DEPARTMENT
CIVIC ACCOMMODATIONS DIVISION
300- 65 GARRY ST. R3C 4K4

PROJECT
**ST. JAMES - ASSINBOIA
LIBRARY
BOILER REPLACEMENT**
1010 PORTAGE AVENUE

SHEET TITLE
REMOVAL & INFILL OF EXISTING WINDOWS



DEMO SECTION AT EXISTING WINDOW

SCALE 1 : 10

SCALE	PROJECT NO.	SHEET NO.
SCALE: AS NOTED	024-2007	A1.0