

1
DS-1
FOUNDATION PLAN
SCALE: 1/2"=1'-0"

10M DOWELS AT 12"o/c
SET 6" INTO EXISTING
HOUSEKEEPING PAD WITH
EPOXY GROUT

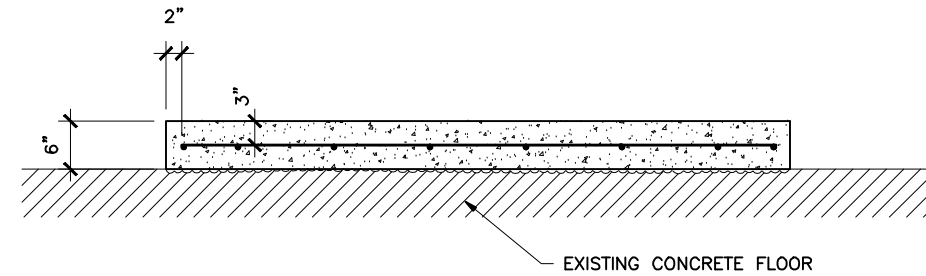
10M PERIMETER BAR

2
DS-1

SURFACE PREPARATION NOTE:

DEFINE OUTLINE OF SLAB PORTION TO BE ADDED W/ 1/2" DEEP BY 1/4" WIDE SAW CUT. CHIP OUT PERIMETER AND MECHANICALLY ROUGHEN EXISTING FLOOR SLAB PRIOR TO CASTING NEW SLAB PORTIONS. APPLY BONDING AGENT OR SAND/CEMENT SLURRY TO EXISTING CONCRETE FLOOR SURFACE PRIOR TO PLACING NEW CONCRETE.

6"TH. 30MPa CONCRETE HOUSEKEEPING PAD
REINFORCED WITH 10M AT 12"o/c
BOTH WAYS MIDDLE. 3" COVER.



2
DS-1
SECTION
SCALE: 1/2"=1'-0"



1601-B Silver Avenue
Winnipeg, Manitoba R5J 4A1
Ph: (204) 786-4946
Fax: (204) 786-4953
email: seeeng@saeeng.mb.ca



JOB TITLE:
ST. JAMES PUBLIC LIBRARY
MECHANICAL RENOVATION
1910 PORTAGE AVENUE

SHEET TITLE:
HOUSEKEEPING PAD DETAILS

DRAWN: M.A.P.
CHECKED: P.T.S.

DATE: 07/09/2007
SCALE: AS NOTED

FILE: 07550
DATE: