

SEWER SERVICE INFORMATION

ADDRESS	SIZE	R DIST JUNCTION TIE
387 ARNOLD AVE RESIDENTIAL	7.05 EWL #389 (DBL W/389)	6.46 W 3RD MH E DALY
388 ARNOLD AVE RESIDENTIAL	2.50 W OF EL	2.06 E 3RD MH E DALY
389 ARNOLD AVE RESIDENTIAL	7.05 EWL #389 (DBL W/389)	6.46 W 3RD MH E DALY
390 ARNOLD AVE RESIDENTIAL	2.05 W OF EL	5.86 W 3RD MH E DALY
391 ARNOLD AVE RESIDENTIAL	0.29 W OF EL (DBL W/393)	22.13 W 3RD MH E DALY
392 ARNOLD AVE RESIDENTIAL	2.08 W OF EL	13.47 W 3RD MH E DALY
393 ARNOLD AVE RESIDENTIAL	0.29 W OF EL (DBL W/391)	22.13 W 3RD MH E DALY
394 ARNOLD AVE RESIDENTIAL	3.46 E OF WL	28.68 W 3RD MH E DALY
395 ARNOLD AVE RESIDENTIAL	1.43 W OF EL	29.33 W 3RD MH E DALY
396 ARNOLD AVE RESIDENTIAL	5.20 E OF WL	36.24 W 3RD MH E DALY
397 ARNOLD AVE RESIDENTIAL	0.19 E OF WL #397 (DBL W/399)	44.66 W 3RD MH E DALY
398 ARNOLD AVE RESIDENTIAL	2.95 E OF WL	43.94 W 3RD MH E DALY
399 ARNOLD AVE RESIDENTIAL	0.19 E OF WL #397 (DBL W/397)	44.66 W 3RD MH E DALY
400 ARNOLD AVE RESIDENTIAL	3.69 E OF WL	51.50 W 3RD MH E DALY

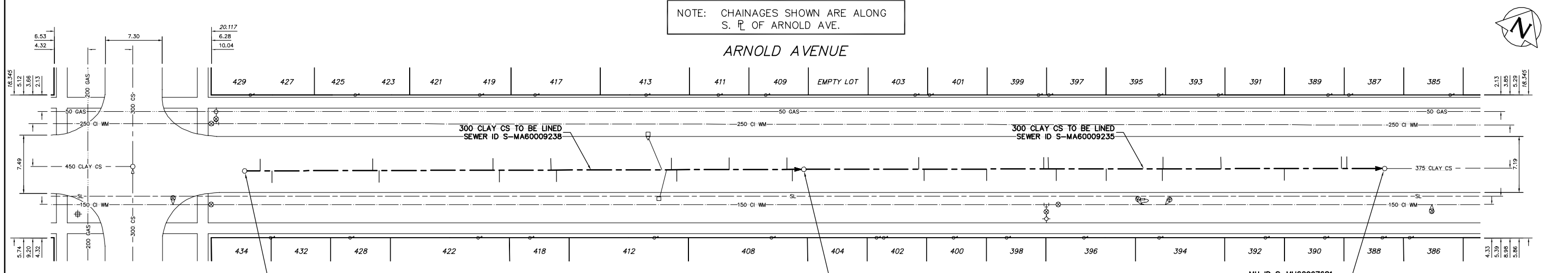
SEWER SERVICE INFORMATION

ADDRESS	SIZE	R DIST JUNCTION TIE
401 ARNOLD AVE RESIDENTIAL	1.45 W OF EL #403 (DBL W/403)	59.80 W 3RD MH E DALY
402 ARNOLD AVE RESIDENTIAL	1.76 E OF WL #402 (DBL W/404)	15.32 E 2ND MH E DALY
403 ARNOLD AVE RESIDENTIAL	1.45 W OF EL #403 (DBL W/401)	51.50 W 3RD MH E DALY
404 ARNOLD AVE RESIDENTIAL	1.76 E OF WL #402 (DBL W/402)	15.32 E 2ND MH E DALY
408 ARNOLD AVE RESIDENTIAL	4.30 W OF EL	2.21 W 2ND MH E DALY
409 ARNOLD AVE RESIDENTIAL	2.38 E OF WL	2.70 W 2ND MH E DALY
411 ARNOLD AVE RESIDENTIAL	3.74 W OF EL	10.33 W 2ND MH E DALY
412 ARNOLD AVE RESIDENTIAL	4.05 W OF EL	17.38 W 2ND MH E DALY
413 ARNOLD AVE RESIDENTIAL	6.21 E OF WL	17.88 W 2ND MH E DALY
417 ARNOLD AVE RESIDENTIAL	3.39 E OF WL	33.24 W 2ND MH E DALY
418 ARNOLD AVE RESIDENTIAL	2.98 E OF WL	32.65 W 2ND MH E DALY
419 ARNOLD AVE RESIDENTIAL	3.70 W OF EL (DBL W/421)	40.88 W 2ND MH E DALY
421 ARNOLD AVE RESIDENTIAL	3.70 W OF EL (DBL W/419)	40.88 W 2ND MH E DALY
422 ARNOLD AVE RESIDENTIAL	3.82 W OF EL	40.23 W 2ND MH E DALY

SEWER SERVICE INFORMATION

ADDRESS	SIZE	R DIST JUNCTION TIE
423 ARNOLD AVE RESIDENTIAL	5.53 E OF WL (DBL W/425)	15.81 E 1ST MH E DALY
425 ARNOLD AVE RESIDENTIAL	5.53 E OF WL (DBL W/423)	15.81 E 1ST MH E DALY
427 ARNOLD AVE RESIDENTIAL	4.83 E OF WL (DBL W/429)	1.20 E 1ST MH E DALY
428 ARNOLD AVE RESIDENTIAL	2.79 E OF WL	16.35 E 1ST MH E DALY
429 ARNOLD AVE RESIDENTIAL	4.83 E OF WL (DBL W/427)	1.20 E 1ST MH E DALY
432 ARNOLD AVE RESIDENTIAL	7.40 EWL #434 (DBL W/434)	1.75 E 1ST MH E DALY
434 ARNOLD AVE RESIDENTIAL	7.40 EWL #434 (DBL W/432)	1.75 E 1ST MH E DALY

NOTE: CHAINAGES SHOWN ARE ALONG S. R. OF ARNOLD AVE.



MH ID S-MH60007636
MH OPENING - 521#
MH RISERS - 960#
MH BASE - 1500X960

SEWER JUNCTION INFORMATION FROM SEWER VIDEO INSPECTION SEWER ID S-MA60009238

DISTANCE FROM MH ID S-MH60007636			
2.0	E	200#	NORTH CX
3.5	E	150#	SOUTH JX
16.4	E	150#	NORTH JN
17.2	E	150#	SOUTH JN
31.8	E	150#	NORTH JX
32.6	E	150#	SOUTH CX
39.2	E	150#	NORTH JN
39.9	E	150#	SOUTH JX
53.4	E	150#	NORTH CX
54.0	E	150#	SOUTH CX
54.6	E	150#	NORTH CX
55.3	E	150#	SOUTH CX
62.0	E	150#	NORTH JX
69.4	E	150#	NORTH JX
70.1	E	150#	SOUTH JN

SEWER JUNCTION INFORMATION FROM SEWER VIDEO INSPECTION SEWER ID S-MA60009235

DISTANCE FROM MH ID S-MH60007633			
14.7	E	150#	NORTH JX
15.4	E	150#	SOUTH JN
23.4	E	150#	SOUTH JX
30.7	E	150#	NORTH JN
31.3	E	150#	NORTH JX
32.3	E	150#	SOUTH CX
38.7	E	150#	SOUTH JN
45.9	E	150#	SOUTH CX
46.0	E	150#	NORTH JN
53.4	E	150#	NORTH JN
61.5	E	150#	SOUTH JN
68.8	E	150#	NORTH JN
69.5	E	150#	NORTH JN

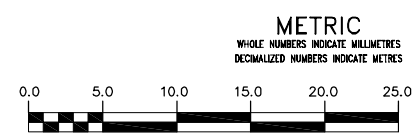
MH ID S-MH60007633
MH OPENING - 521#
MH RISERS - 770#
MH BASE - 1200X770#

MH ID S-MH60007681
MH OPENING - 521#
MH RISERS - 770#
MH BASE - 1200X770

DALY ST S



WARNING
IF POWER EQUIPMENT OR EXPLOSIVES ARE TO BE USED FOR EXCAVATION ON THIS PROJECT THE CONTRACTOR MUST:
1) NOTIFY THE GAS COMPANY OF THE PROPOSED LOCATION OF EXCAVATION.
2) TAKE PRECAUTION TO AVOID DAMAGE TO GAS COMPANY INSTALLATIONS.
SEE PROVINCIAL REGULATION 210/72 FOR DETAILS



EXISTING	LEGEND-PLAN	PROPOSED	EXISTING	LEGEND-PLAN	PROPOSED	EXISTING	LEGEND-PROFILE	PROPOSED
200 WM	WATERMAIN	200 WM	SL, HYDRO	MTS	150 WM	WATERMAIN	150 WM	HYDRANT
525 LDS	LAND DRAINAGE SEWER	525 LDS	TRAFFIC SIGNALS	GAS	300 LDS	LAND DRAINAGE SEWER	300 LDS	VALVE
375 WWS	WASTEWATER SEWER	375 WWS	SURVEY BAR	FENCE	250 WWS	WASTEWATER SEWER	250 WWS	PROFILE
MANHOLE	CATCH BASIN	CURB INLET	JUNCTIONS	CULVERT	ANODE	LEGEND-PLAN	PROPOSED	EXISTING
VALVE	POLE - HYDRO, MTS	CURB STOP	GUY ANCHOR	LIGHT STANDARD	TREE	LEGEND-PLAN	PROPOSED	EXISTING
HYDRANT	GROUND ABOVE PIPE					LEGEND-PROFILE	PROPOSED	EXISTING

LOCATION APPROVED
UNDERGROUND STRUCTURES

SUPV. U/G STRUCTURES COMMITTEE DATE

NOTE:
LOCATION OF UNDERGROUND STRUCTURES AS SHOWN ARE BASED ON THE BEST INFORMATION AVAILABLE BUT NO GUARANTEE IS GIVEN THAT THE GIVEN LOCATIONS ARE EXACT. CONFIRMATION OF EXISTENCE AND EXACT LOCATION OF ALL SERVICES MUST BE OBTAINED FROM THE INDIVIDUAL UTILITIES BEFORE PROCEEDING WITH CONSTRUCTION.

NO.	REVISIONS	DATE	BY

CITY OF WINNIPEG
WATER AND WASTE
ENGINEERING DIVISION

DESIGNED BY: SC
CHECKED BY: TW

DRAWN BY: CJH
APPROVED BY: KZ

HOR. SCALE: 1:250
VERTICAL: 1:50

RELEASED FOR CONSTRUCTION

DATE: 2007 07 19

ENGINEER'S SEAL
ORIGINAL SIGNED BY
S.R.J. COURNOYER
07/07/23

FILE NAME: 06107.dwg
PLOT DATE: 2007 07 19

THE CITY OF WINNIPEG
WATER AND WASTE DEPARTMENT

2007 SEWER RENEWALS
BY CIPP LINING CONTRACT 21
ARNOLD AVENUE
1ST MH E OF DALY STREET S TO
3RD MH E OF DALY STREET S

SHEET 5 OF 25
CITY DRAWING NUMBER
06107