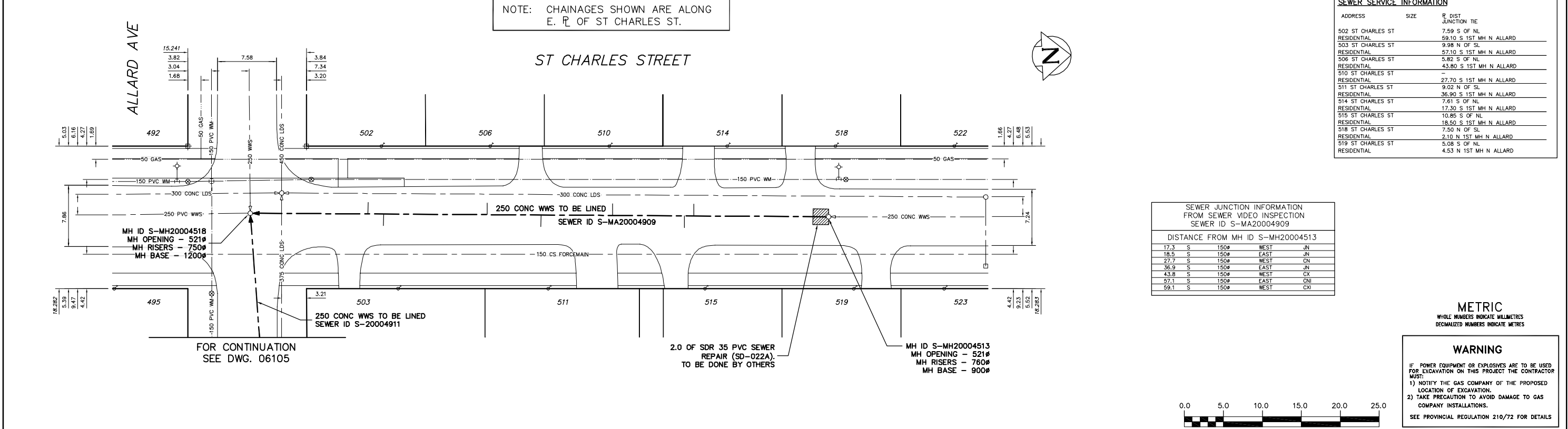


NOTE: CHAINAGES SHOWN ARE ALONG E. R. OF ST CHARLES ST.



SEWER SERVICE INFORMATION		
ADDRESS	SIZE	R DIST JUNCTION TIE
502 ST CHARLES ST	7.59 S OF NL	7.59 S OF NL
RESIDENTIAL		59.10 S 1ST MH N ALLARD
503 ST CHARLES ST	9.98 N OF SL	9.98 N OF SL
RESIDENTIAL		57.10 S 1ST MH N ALLARD
506 ST CHARLES ST	5.82 S OF NL	5.82 S OF NL
RESIDENTIAL		43.80 S 1ST MH N ALLARD
510 ST CHARLES ST	-	-
RESIDENTIAL		27.70 S 1ST MH N ALLARD
511 ST CHARLES ST	9.02 N OF SL	9.02 N OF SL
RESIDENTIAL		36.90 S 1ST MH N ALLARD
514 ST CHARLES ST	7.61 S OF NL	7.61 S OF NL
RESIDENTIAL		17.30 S 1ST MH N ALLARD
515 ST CHARLES ST	10.85 S OF NL	10.85 S OF NL
RESIDENTIAL		18.50 S 1ST MH N ALLARD
518 ST CHARLES ST	7.50 N OF SL	7.50 N OF SL
RESIDENTIAL		2.10 N 1ST MH N ALLARD
519 ST CHARLES ST	5.08 S OF NL	5.08 S OF NL
RESIDENTIAL		4.53 N 1ST MH N ALLARD

SEWER JUNCTION INFORMATION FROM SEWER VIDEO INSPECTION SEWER ID S-MA20004909			
DISTANCE FROM MH ID S-MH20004513			
17.3	S	150#	WEST JN
18.5	S	150#	EAST JN
27.7	S	150#	WEST CN
36.9	S	150#	EAST JN
43.8	S	150#	WEST CX
57.1	S	150#	EAST CNI
59.1	S	150#	WEST CXI

METRIC  
WHOLE NUMBERS INDICATE MILLIMETRES  
DECIMALIZED NUMBERS INDICATE METRES

**WARNING**  
IF POWER EQUIPMENT OR EXPLOSIVES ARE TO BE USED FOR EXCAVATION ON THIS PROJECT THE CONTRACTOR MUST:  
1) NOTIFY THE GAS COMPANY OF THE PROPOSED LOCATION OF EXCAVATION.  
2) TAKE PRECAUTION TO AVOID DAMAGE TO GAS COMPANY INSTALLATIONS.  
SEE PROVINCIAL REGULATION 210/72 FOR DETAILS

200 WM	WATERMAIN	200 WM	SL, HYDRO	150 WM	WATERMAIN	150 WM
⊕	HYDRANT	⊕	MTS	+	HYDRANT	+
⊙	VALVE	⊙	TRAFFIC SIGNALS	X	VALVE	X
525 LDS	LAND DRAINAGE SEWER	525 LDS	GAS	50 GAS	300 LDS	LAND DRAINAGE SEWER
375 WWS	WASTEWATER SEWER	375 WWS	SURVEY BAR	250 WWS	250 WWS	WASTEWATER SEWER
○	MANHOLE	●	FENCE	⊖	⊖	PROFILE
□	CATCH BASIN	■	POLE - HYDRO, MTS	⊕	⊕	GROUND ABOVE PIPE
▽	CURB INLET	▽	CURB STOP	⊕	⊕	
+	JUNCTIONS	+	GUY ANCHOR			
—	CULVERT	—	LIGHT STANDARD			
⊕	ANODE	⊕	TREE			
EXISTING	LEGEND-PLAN	PROPOSED	EXISTING	LEGEND-PLAN	PROPOSED	EXISTING
EXISTING	LEGEND-PROFILE	PROPOSED	EXISTING	LEGEND-PROFILE	PROPOSED	EXISTING

LOCATION APPROVED UNDERGROUND STRUCTURES	
SUPV. U/G STRUCTURES COMMITTEE	DATE
NOTE: LOCATION OF UNDERGROUND STRUCTURES AS SHOWN ARE BASED ON THE BEST INFORMATION AVAILABLE BUT NO GUARANTEE IS GIVEN THAT ALL EXISTING UTILITIES ARE SHOWN OR THAT THE GIVEN LOCATIONS ARE EXACT. CONFIRMATION OF EXISTENCE AND EXACT LOCATION OF ALL SERVICES MUST BE OBTAINED FROM THE INDIVIDUAL UTILITIES BEFORE PROCEEDING WITH CONSTRUCTION.	
B.M. ELEV.	FIELD BOOK #:
POSTED TO LBS:	
NO. REVISIONS	DATE BY

**CITY OF WINNIPEG WATER AND WASTE ENGINEERING DIVISION**

DESIGNED BY: SC  
CHECKED BY: TW  
DRAWN BY: C/JH  
APPROVED BY: KZ

HOR. SCALE: 1:250  
VERTICAL: 1:50

RELEASER FOR CONSTRUCTION

DATE: 2007 07 19

ENGINEER'S SEAL  
ORIGINAL SIGNED BY  
S.R.J. COUNROYER  
07/07/23

BID OPPORTUNITY: 529-2007  
FILENAME: 06105\_8\_21.dwg  
PLOT DATE: 2007 07 19

**THE CITY OF WINNIPEG WATER AND WASTE DEPARTMENT**

2007 SEWER RENEWALS  
BY CIPP LINING CONTRACT 21  
ST CHARLES STREET  
1ST MH N OF ALLARD AVENUE TO  
MH AT ALLARD AVENUE

SHEET 19 OF 25  
CITY DRAWING NUMBER  
06121