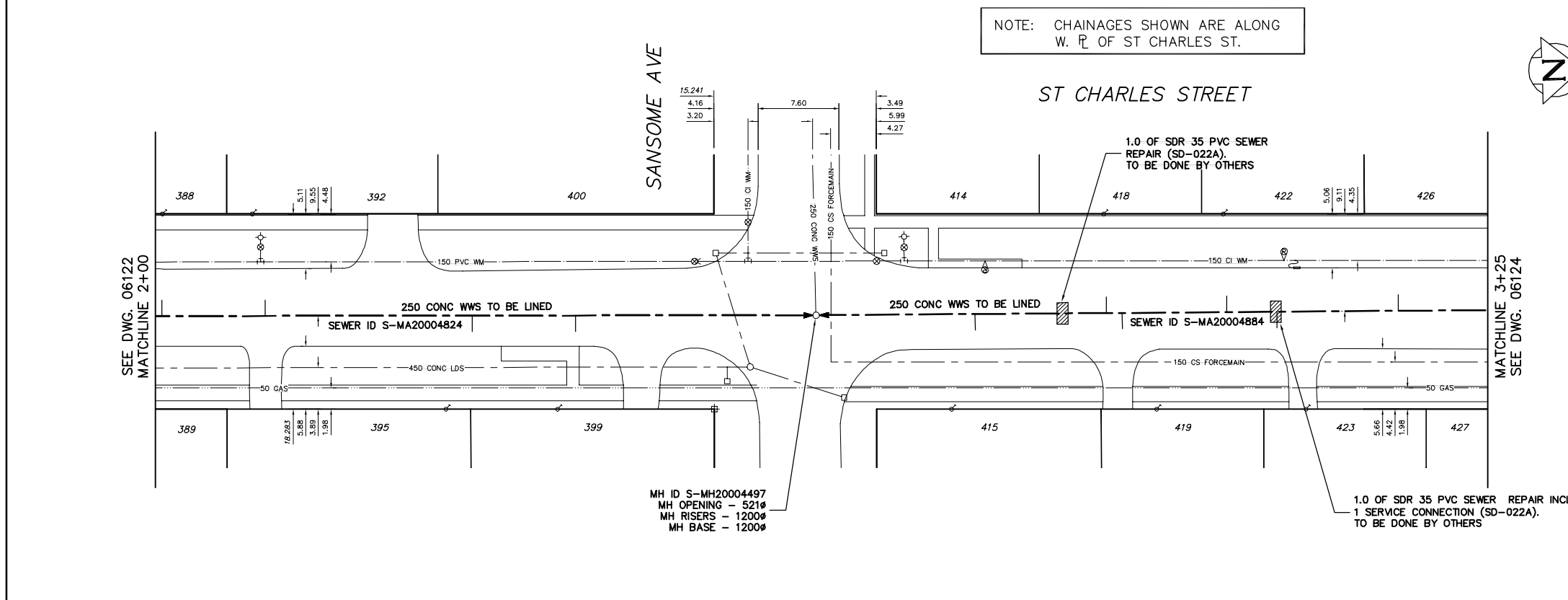


SEWER SERVICE INFORMATION		
ADDRESS	SIZE	R DIST JUNCTION TIE
388 ST CHARLES ST RESIDENTIAL		NO INFORMATION AVAILABLE
389 ST CHARLES ST RESIDENTIAL	6.73 N OF SL	20.43 N 1ST MH N ALGIER
392 ST CHARLES ST RESIDENTIAL		NO INFORMATION AVAILABLE
395 ST CHARLES ST RESIDENTIAL		NO INFORMATION AVAILABLE
399 ST CHARLES ST RESIDENTIAL		NO INFORMATION AVAILABLE
400 ST CHARLES ST RESIDENTIAL		NO INFORMATION AVAILABLE
414 ST CHARLES ST RESIDENTIAL		NO INFORMATION AVAILABLE
415 ST CHARLES ST RESIDENTIAL		NO INFORMATION AVAILABLE
418 ST CHARLES ST RESIDENTIAL	6.72 N OF SL	30.24 N MH AT SANSOME
419 ST CHARLES ST RESIDENTIAL		NO INFORMATION AVAILABLE
422 ST CHARLES ST RESIDENTIAL		NO INFORMATION AVAILABLE
423 ST CHARLES ST RESIDENTIAL		NO INFORMATION AVAILABLE
426 ST CHARLES ST RESIDENTIAL		NO INFORMATION AVAILABLE
427 ST CHARLES ST RESIDENTIAL		NO INFORMATION AVAILABLE

NOTE: CHAINAGES SHOWN ARE ALONG W. R. OF ST CHARLES ST.

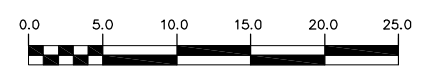


SEWER JUNCTION INFORMATION FROM SEWER VIDEO INSPECTION SEWER ID S-MA20004884			
DISTANCE FROM MH ID S-MH20004491			
27.0	S	150	WEST CN
38.4	S	150	EAST CN
43.1	S	150	WEST CUI
52.9	S	150	EAST CNI
54.4	S	150	WEST CN
66.7	S	150	EAST CN

SEWER JUNCTION INFORMATION FROM SEWER VIDEO INSPECTION SEWER ID S-MA20004824			
DISTANCE FROM MH ID S-MH20004443			
22.3	S	150	WEST CN
32.0	S	150	WEST CNI
51.4	S	150	EAST CN
61.1	S	150	EAST CN

METRIC
WHOLE NUMBERS INDICATE MILLIMETRES
DECIMALIZED NUMBERS INDICATE METRES

WARNING
IF POWER EQUIPMENT OR EXPLOSIVES ARE TO BE USED FOR EXCAVATION ON THIS PROJECT THE CONTRACTOR MUST:
1) NOTIFY THE GAS COMPANY OF THE PROPOSED LOCATION OF EXCAVATION.
2) TAKE PRECAUTION TO AVOID DAMAGE TO GAS COMPANY INSTALLATIONS.
SEE PROVINCIAL REGULATION 210/72 FOR DETAILS



200 WM	WATERMAIN	200 WM	SL, HYDRO	150 WM	WATERMAIN	150 WM
+	HYDRANT	+	MTS	+	HYDRANT	+
⊙	VALVE	⊙	TRAFFIC SIGNALS	+	VALVE	+
---	525 LDS LAND DRAINAGE SEWER	---	GAS	---	300 LDS LAND DRAINAGE SEWER	---
---	375 WWS WASTEWATER SEWER	---	50 GAS	---	250 WWS WASTEWATER SEWER	---
○	MANHOLE	○	SURVEY BAR	○	MANHOLE	○
□	CATCH BASIN	□	FENCE	□	CATCH BASIN	□
▽	CURB INLET	▽	POLE - HYDRO, MTS	▽	CURB INLET	▽
+	JUNCTIONS	+	CURB STOP	+	JUNCTIONS	+
+	CULVERT	+	GUY ANCHOR	+	CULVERT	+
+	ANODE	+	LIGHT STANDARD	+	ANODE	+
+	EXISTING	+	TREE	+	EXISTING	+
+	LEGEND-PLAN	+	LEGEND-PLAN	+	LEGEND-PROFILE	+
+	PROPOSED	+	PROPOSED	+	PROPOSED	+

LOCATION APPROVED	B.M. ELEV.	FIELD BOOK #:
UNDERGROUND STRUCTURES		
SUPV. U/G STRUCTURES COMMITTEE		
DATE		
NOTE:		
LOCATION OF UNDERGROUND STRUCTURES AS SHOWN ARE BASED ON THE BEST INFORMATION AVAILABLE BUT NO GUARANTEE IS GIVEN THAT ALL EXISTING UTILITIES ARE SHOWN OR THAT THE GIVEN LOCATIONS ARE EXACT. CONFIRMATION OF EXISTENCE AND EXACT LOCATION OF ALL SERVICES MUST BE OBTAINED FROM THE INDIVIDUAL UTILITIES BEFORE PROCEEDING WITH CONSTRUCTION.		
NO. REVISIONS	DATE	BY

CITY OF WINNIPEG
WATER AND WASTE
ENGINEERING DIVISION

DESIGNED BY: SC
CHECKED BY: TW
DRAWN BY: C/JH
APPROVED BY: KZ
HOR. SCALE: 1:250
VERTICAL SCALE: 1:50
DATE: 2007 07 23

ENGINEER'S SEAL
ORIGINAL SIGNED BY
S.R.J. COURNOYER
07/07/23
FILE NAME: 06122_23_24.dwg
PLOT DATE: 2007 07 23

THE CITY OF WINNIPEG
WATER AND WASTE DEPARTMENT

2007 SEWER RENEWALS
BY CIPP LINING CONTRACT 21
ST CHARLES STREET
1ST MH S OF SANSOME AVENUE TO
1ST MH N OF SANSOME AVENUE

SHEET 21 OF 25
CITY DRAWING NUMBER
06123