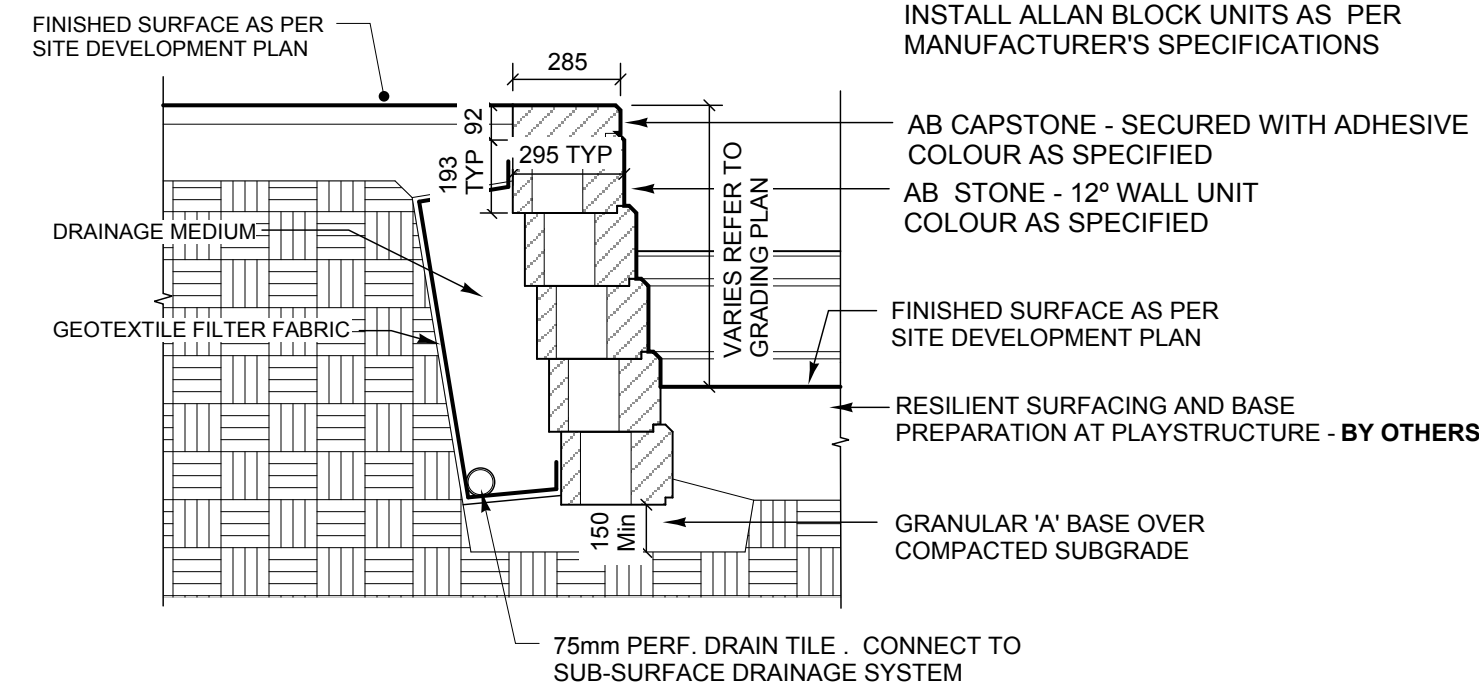
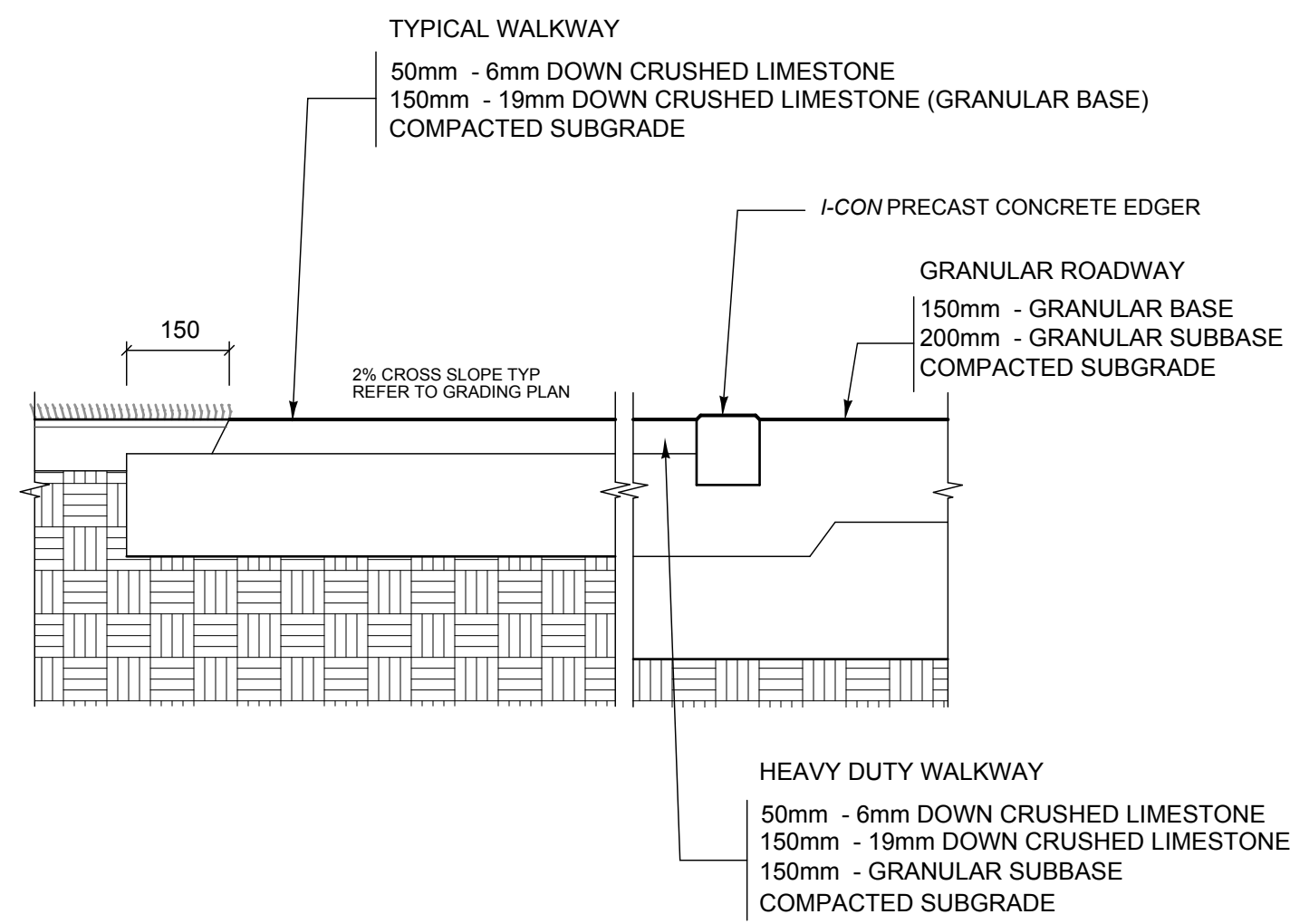


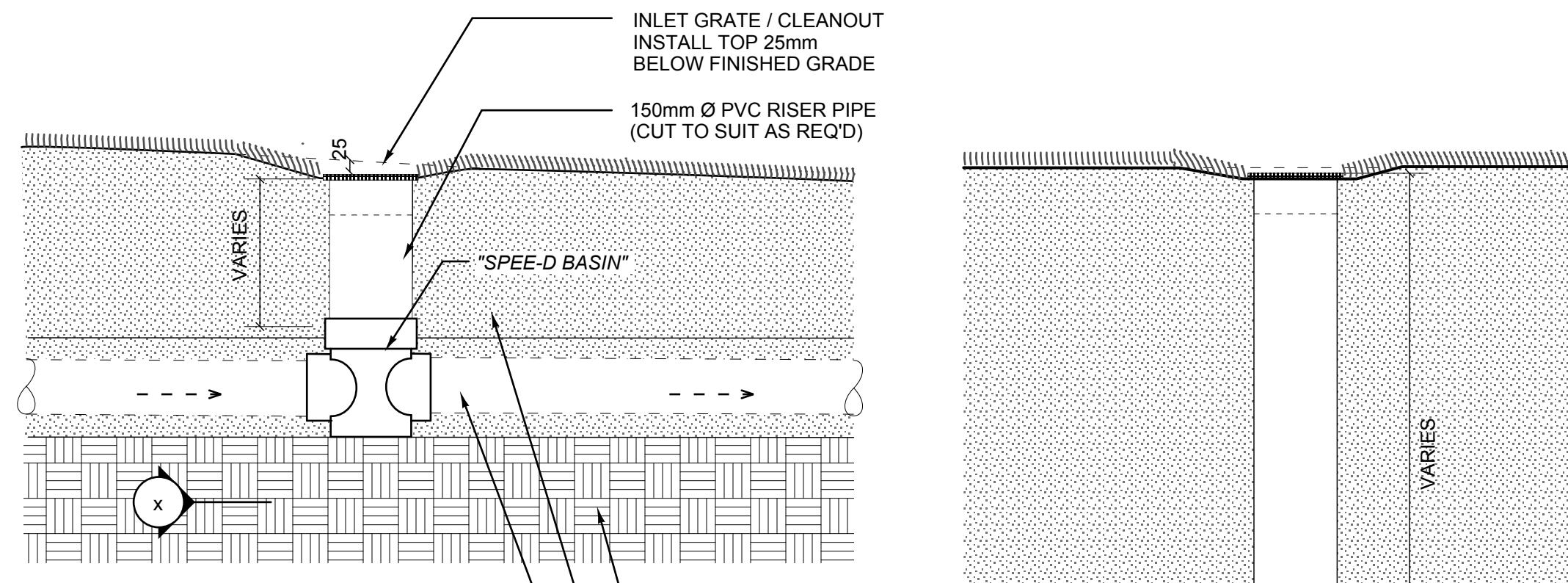
**1 CONCRETE EDGING CURB**  
L-5 1:10



**2 PRECAST CONCRETE RETAINING WALL**  
L-5 1:20

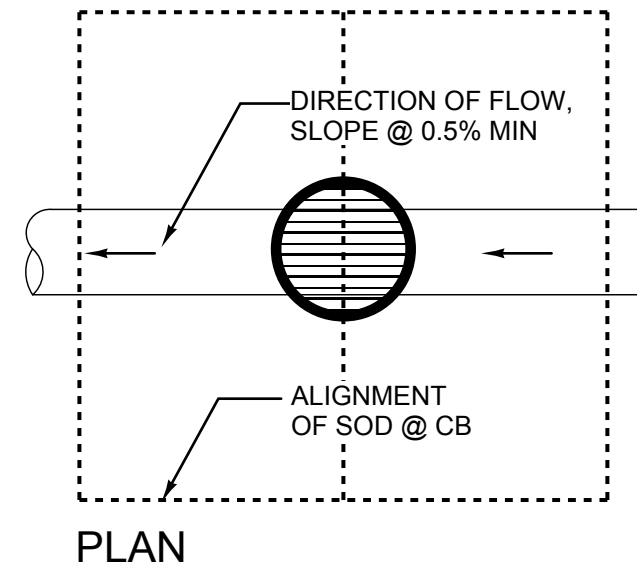


**3 GRANULAR WALKWAY**  
L-5 1:10



**TYPICAL SECTION**

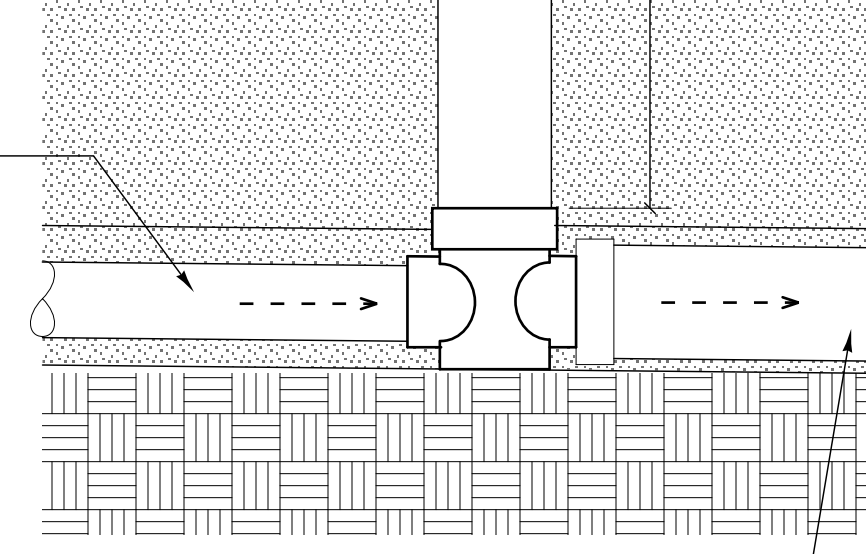
NOTE: REFER TO DRAINAGE PLAN FOR LOCATION AND EXTENT OF DRAINAGE PIPE TYPE



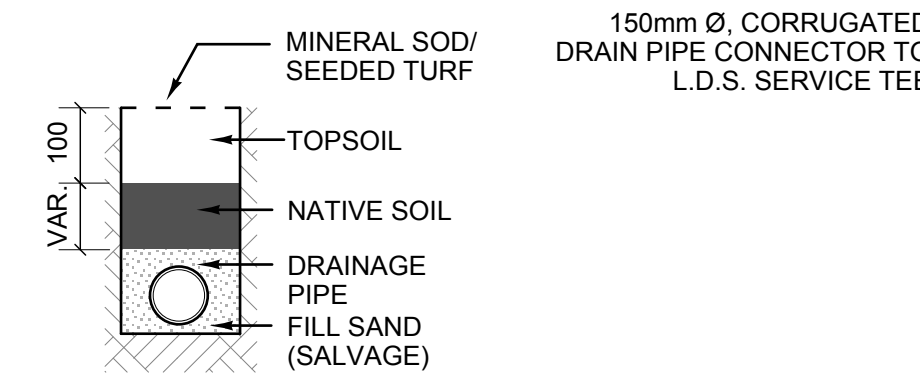
**PLAN**

NOTES:  
INSTALL CB'S WITH SOLID COVERS WHEN USED EXPRESSLY AS CLEANOUTS AT THE HIGH END OF ANY DRAIN LINE.  
ONLY INSTALL CB'S W/ THE APPROP. NO. OF OPENINGS TO SUIT THE APPLICATION.

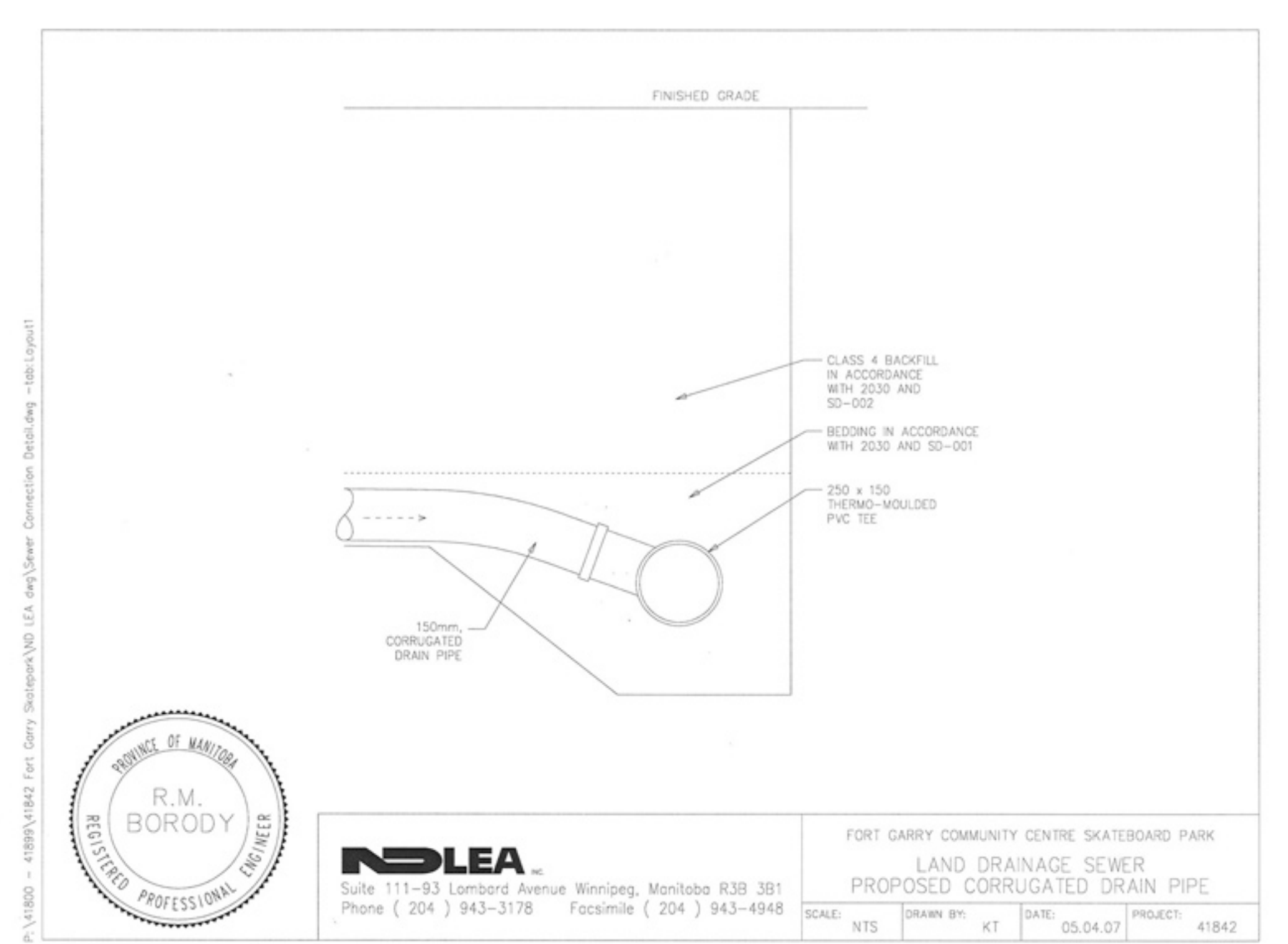
**4 SUBSURFACE DRAINAGE SYSTEM**  
L-5 SCALE 1:10



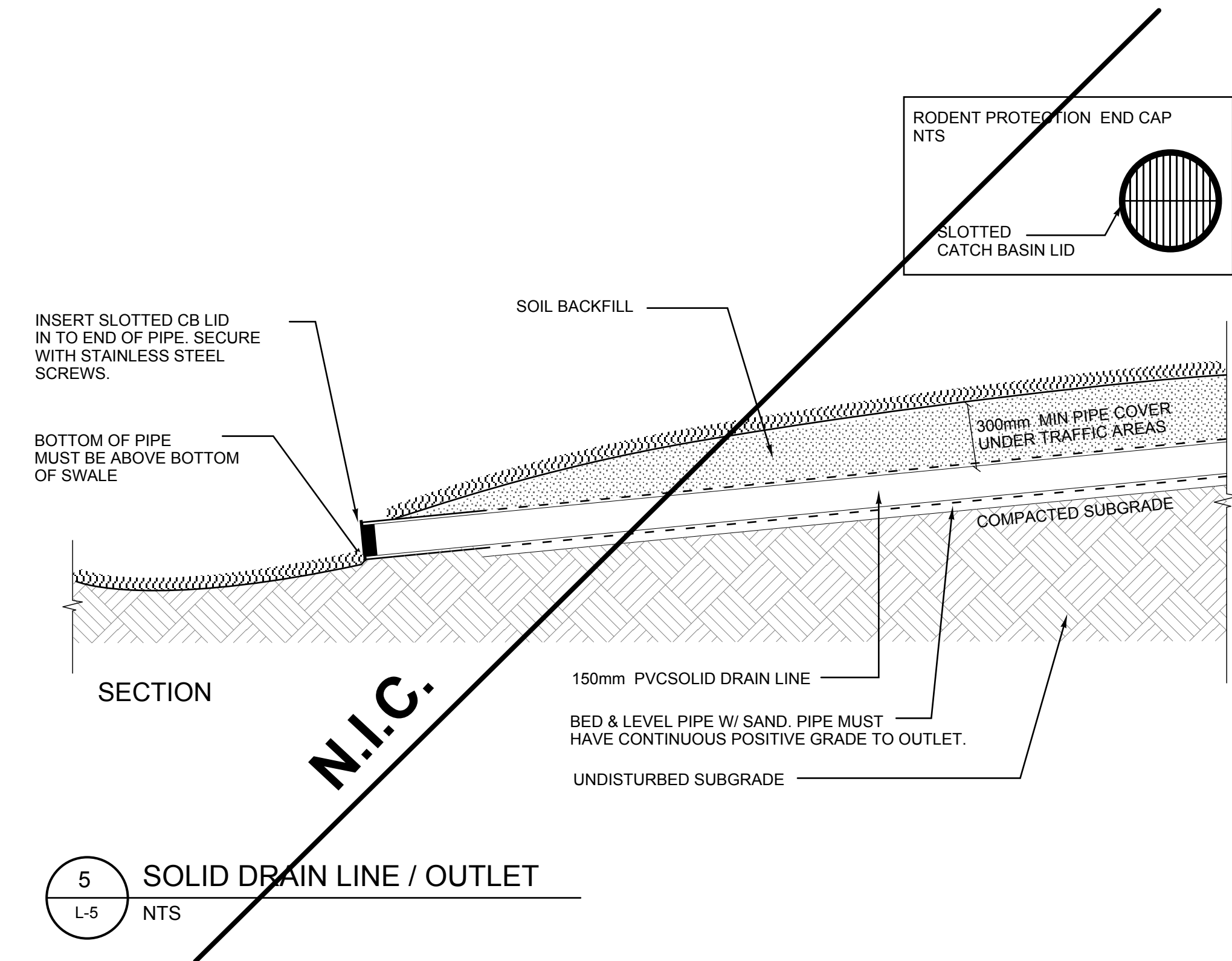
**LAST-IN-RUN SECTION**



**TYPICAL SECTION NTS**



**LDS SERVICE TEE SECTION NTS**



**SECTION**

**5 SOLID DRAIN LINE / OUTLET**  
L-5 NTS

**LEGEND**

**HILDERMAN THOMAS FRANK & CRAM**  
Landscape Architecture • Planning  
500 - 115 Bannatyne Avenue East, Winnipeg, MB R3B 0R3  
Phone: 204.944.9907 Fax: 204.957.1467

**SPECTRUM SKATEPARK CREATIONS LTD.**

B.M. ELEV.	YY.MM.DD	NO.	REVISIONS	DATE	BY

DESIGNED: AB	DRAWN: AB
SCALE: AS SHOWN	APPROVED: GM
ACCEPTED BY:	DATE: JULY 6, 2007

CONSULTANT PROJECT NO. 07 014

**THE CITY OF WINNIPEG**  
PUBLIC WORKS DEPARTMENT  
ENGINEERING DIVISION

**FORT GARRY COMMUNITY CENTRE PLAY STRUCTURE SURROUND**

CITY DRAWING NUMBER: SHEET 5 OF 5

**SITE DETAILS**  
**L-5**