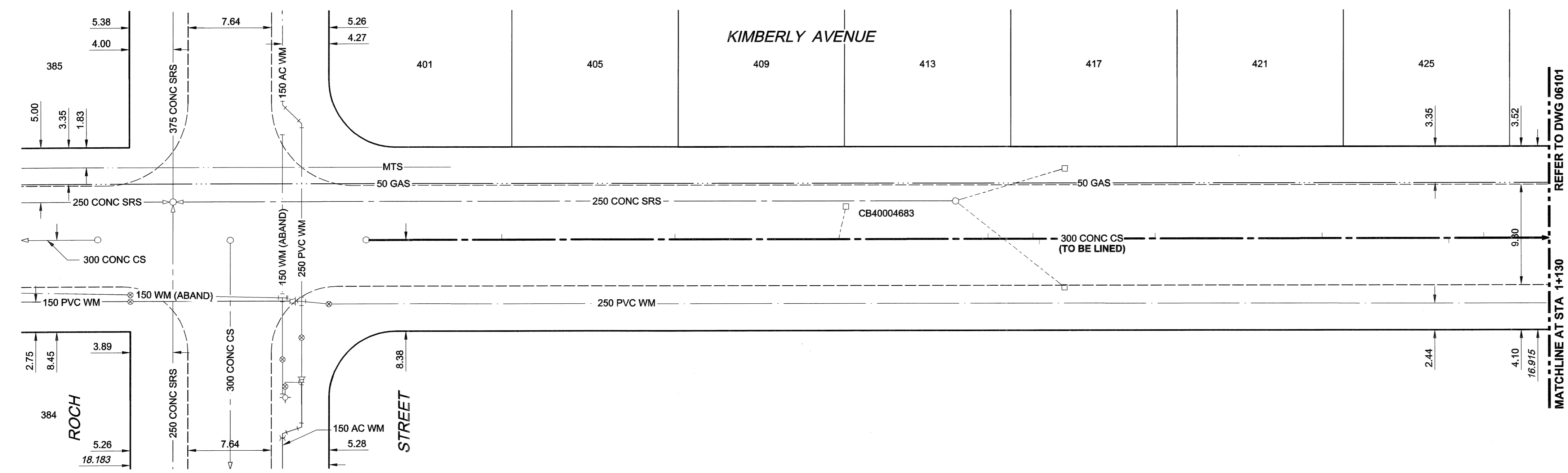
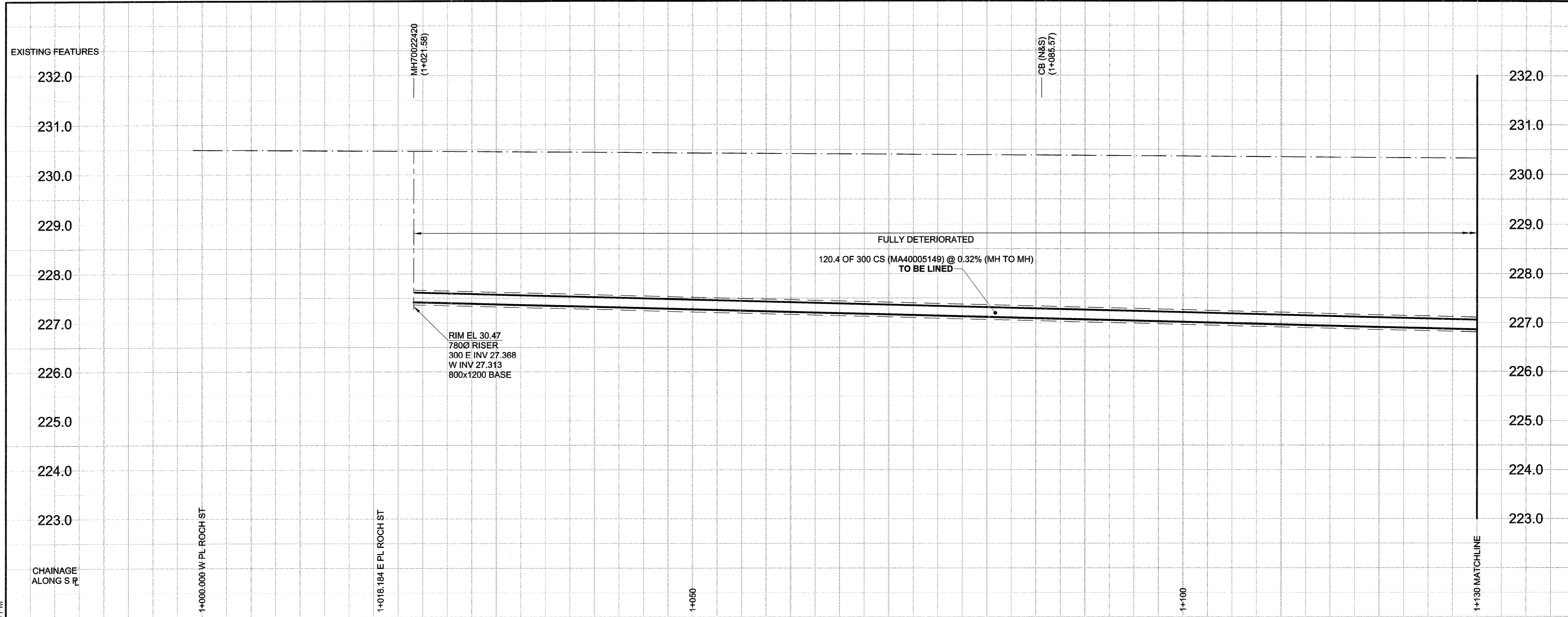


D SIZE 22" x 34" (559mm x 864mm)

PLOT: 07/07/20 4:58:06 PM

UMA AECOM REVIEW DRFT CHK MA  
UMA FILE NAME: D265-217-01\_00-C-1008\_RX.dwg Saved By: lberand



**SEWER JUNCTION INFORMATION**

REF. MH*	DIST FROM*	SIZE*	CLOCK AT*
MH70022420	12.40	1500	09
MH70022420	28.30	1500	09
MH70022420	43.30	1500	10
MH70022420	57.00	1500	09
MH70022420	61.10	1500	10
MH70022420	61.70	1500	02
MH70022420	72.30	1500	09
MH70022420	87.60	1500	10
MH70022420	99.20	1500	02
MH70022420	102.40	1500	10
MH70022420	108.50	1500	02

\*JUNCTION INFORMATION FROM VIDEO INSPECTION

**WARNING**  
IF POWER EQUIPMENT OR EXPLOSIVES ARE TO BE USED FOR EXCAVATION ON THIS PROJECT, THE CONTRACTOR MUST:  
1) NOTIFY THE GAS COMPANY OF THE PROPOSED LOCATION OF EXCAVATION.  
2) TAKE PRECAUTION TO AVOID DAMAGE TO GAS COMPANY INSTALLATIONS.  
SEE PROVINCIAL REGULATION 140/92 FOR DETAILS

**METRIC**  
WHOLE NUMBERS INDICATE MILLIMETRES  
DECIMALIZED NUMBERS INDICATE METRES

**LOCATION APPROVED**  
UNDERGROUND STRUCTURES

SUPR. U/G STRUCTURES	DATE	COMMITTEE

**NOTE:**  
LOCATION OF UNDERGROUND STRUCTURES AS SHOWN ARE BASED ON THE BEST INFORMATION AVAILABLE. BUT NO GUARANTEE IS GIVEN THAT ALL EXISTING UTILITIES ARE SHOWN OR THAT THE GIVEN LOCATIONS ARE EXACT. CONFIRMATION OF EXISTENCE AND EXACT LOCATION OF ALL SERVICES MUST BE OBTAINED FROM THE INDIVIDUAL UTILITIES BEFORE PROCEEDING WITH CONSTRUCTION.

**APEGM**  
Certificate of Authorization  
UMA Engineering Ltd. (MB)  
No. 256 Date: 07/27/21

BID OPPORTUNITY NO. 545-2007

EXISTING	LEGEND - PLAN	NEW	EXISTING	LEGEND - PLAN	NEW	EXISTING	LEGEND - PROFILE	NEW
150 WM	WATERMAIN	150 WM	CURB STOP	REDUCER	150 WM	WATERMAIN	150 WM	WATERMAIN
300 LDS	LAND DRAINAGE SEWER	300 LDS	REDUCER	COUPLING	300 LDS	LAND DRAINAGE SEWER	300 LDS	LAND DRAINAGE SEWER
250 WWS	WASTE WATER SEWER	250 WWS	ANODE	HYDRO	250 WWS	WASTE WATER SEWER	250 WWS	WASTE WATER SEWER
MANHOLE	MANHOLE	MANHOLE	MTS	GAS	MANHOLE	MANHOLE	MANHOLE	MANHOLE
CATCH BASIN	CATCH BASIN	CATCH BASIN	TESTHOLE	LAMP STANDARD	CATCH BASIN	CATCH BASIN	CATCH BASIN	CATCH BASIN
CURB INLET	CURB INLET	CURB INLET	TREE	TREE	CURB INLET	CURB INLET	CURB INLET	CURB INLET
CULVERT	CULVERT	CULVERT			CULVERT	CULVERT	CULVERT	CULVERT
PIPE ABANDONMENTS	PIPE ABANDONMENTS	PIPE ABANDONMENTS			PIPE ABANDONMENTS	PIPE ABANDONMENTS	PIPE ABANDONMENTS	PIPE ABANDONMENTS
SURVEY BAR	SURVEY BAR	SURVEY BAR			SURVEY BAR	SURVEY BAR	SURVEY BAR	SURVEY BAR

NO.	REVISIONS	YYMMDD	BY
0	ISSUED FOR CONSTRUCTION	07/07/20	KMB

© 2006 UMA ENGINEERING LTD. ALL RIGHTS RESERVED.

DESIGNED BY	CHECKED BY
MJR	A. Delaney
DRAWN BY	APPROVED BY
KMB	<i>[Signature]</i>

HOR. SCALE: 1:250  
VERT. SCALE: 1:50  
DATE: 07/27/21

PROFESSIONAL'S SEAL  
PROVINCE OF MANITOBA  
C. C. MACEY  
REGISTERED ENGINEER  
CONSULTANT DRAWING NO. 08  
D265-217-01

**THE CITY OF WINNIPEG**  
WATER AND WASTE DEPARTMENT

**2007 COMBINED SEWER RENEWALS**  
BY CIPP LINING  
CONTRACT 20  
KIMBERLEY AVENUE  
MH AT ROCH STREET  
TO STA 1+130

SHEET 8 OF 11  
CITY DRAWING NUMBER  
**06100**  
REV 0