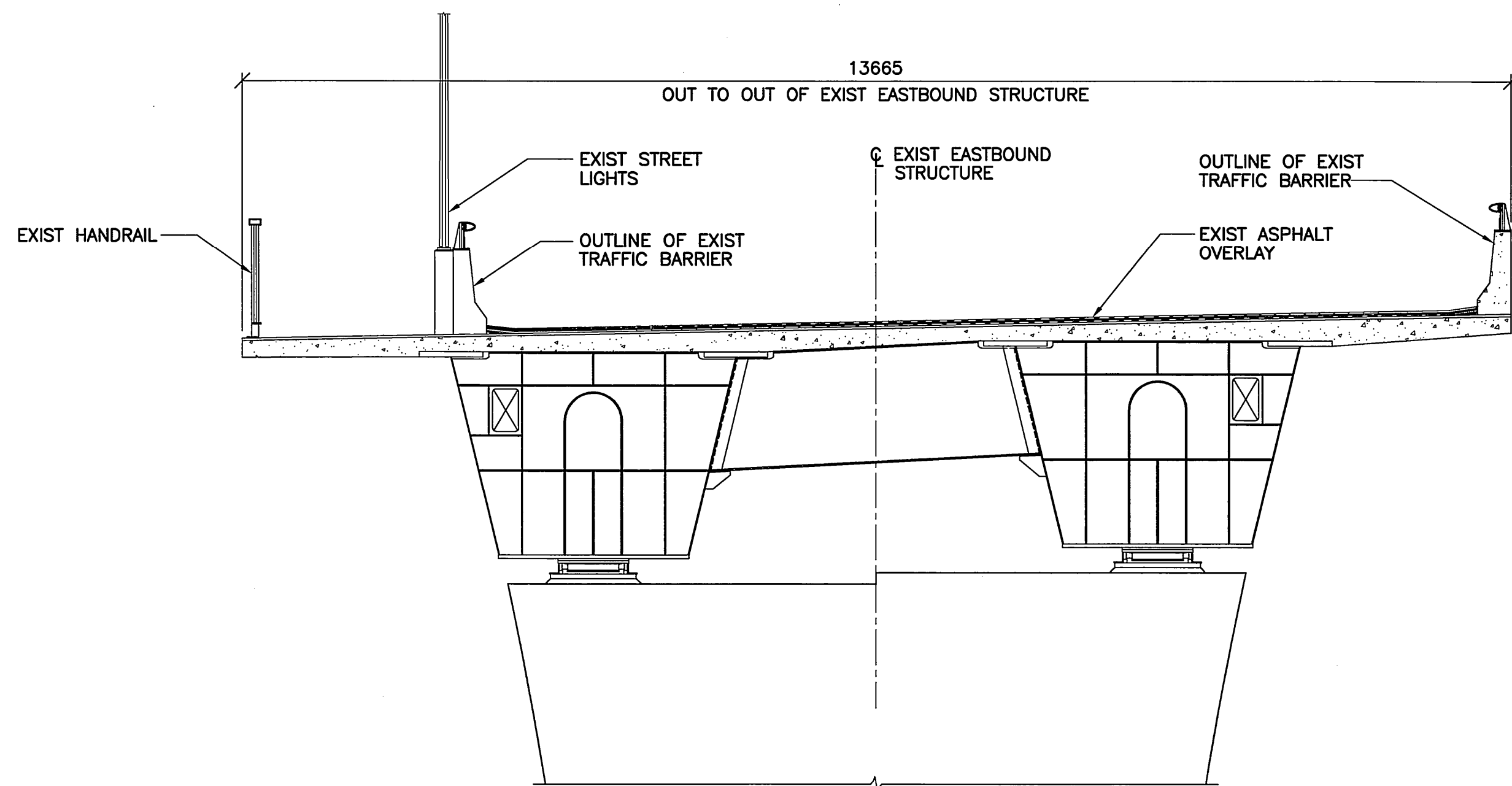
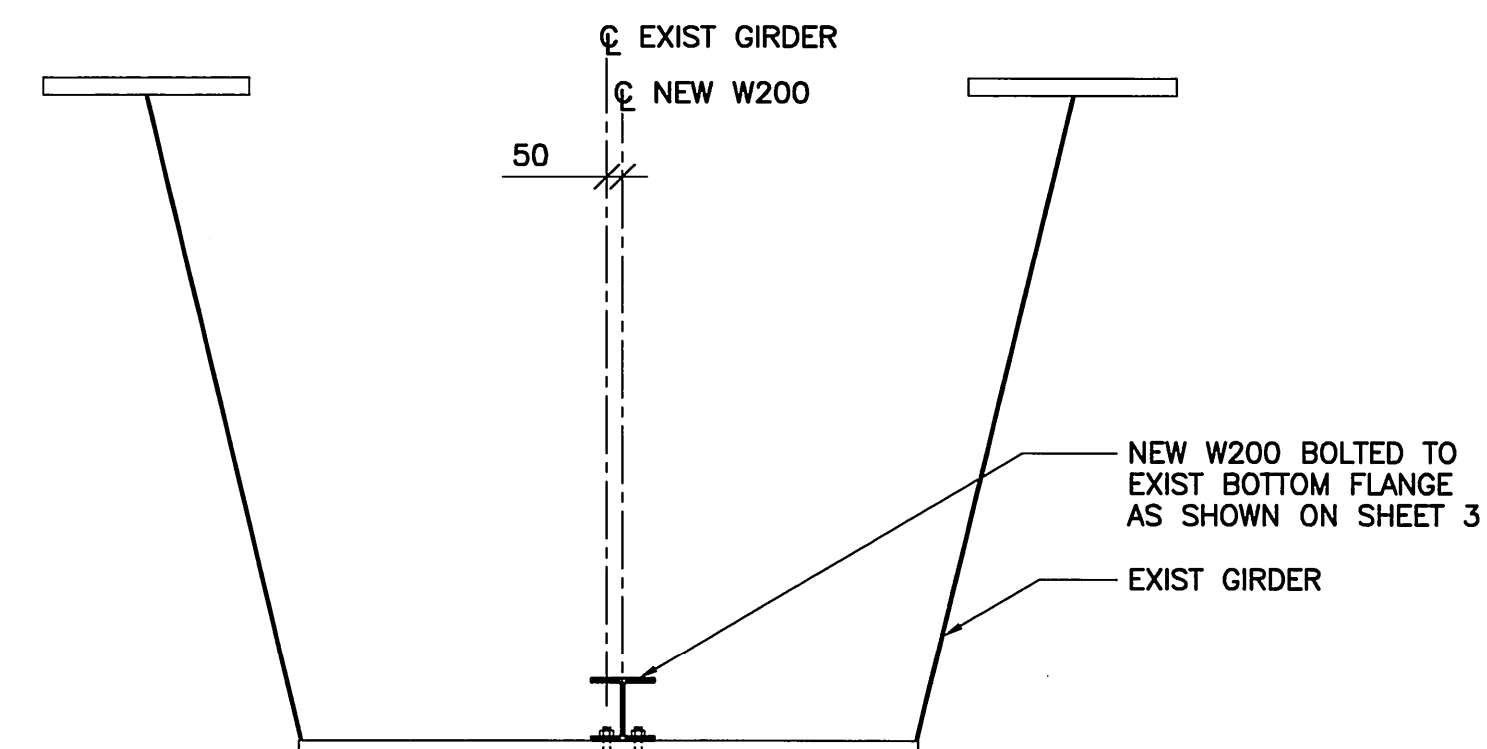


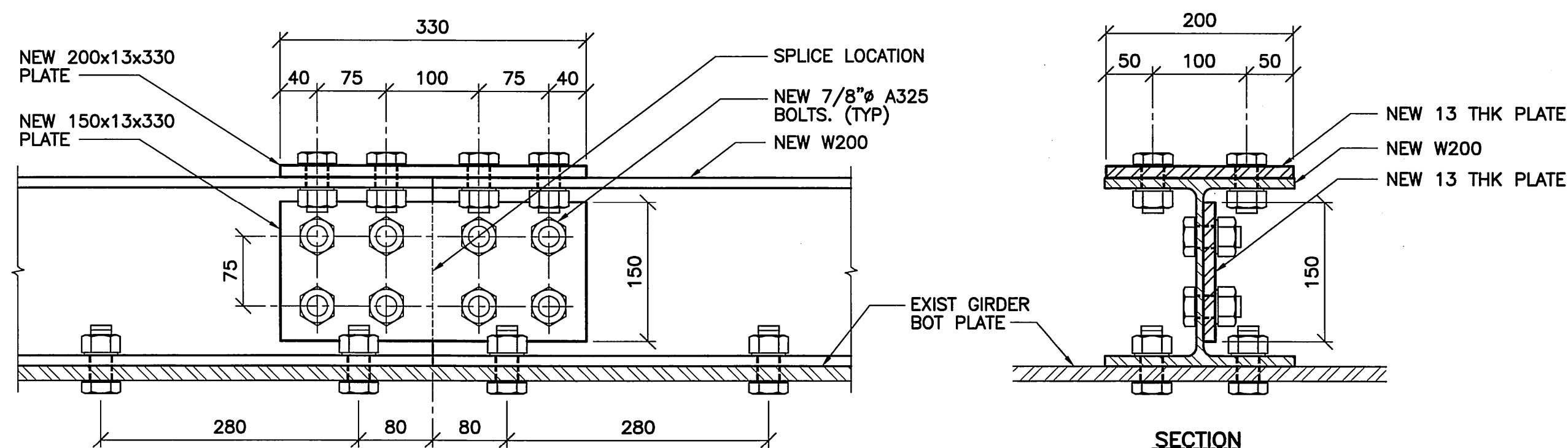
**1**  
- -  
**GIRDER BOTTOM FLANGE PLATE REINF - PARTIAL PLAN**  
1 : 100  
- TYPICAL FOR BOTH GIRDERS OF THE EASTBOUND STRUCTURE  
- EXISTING GIRDER : CSA G40.21 50A (ATMOSPHERIC CORROSION-RESISTANT WELDABLE STRUCTURAL STEEL)



**2**  
- -  
**EXIST EASTBOUND STRUCTURE CROSS SECTION**  
1 : 50



**3**  
- -  
**SECTION**  
1 : 25  
- DECK NOT SHOWN



**4**  
- -  
**NEW W200 SPLICE DETAIL**  
1 : 5

**STRUCTURAL STEEL NOTES:**

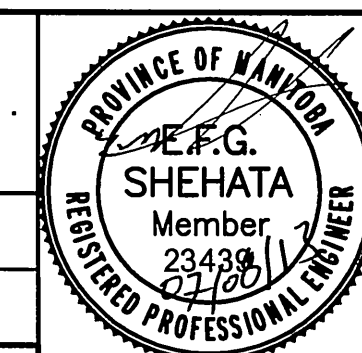
1. DESIGN, DETAILING, FABRICATION AND ERECTION OF STRUCTURAL STEEL TO CONFORM TO:
  - CHBDC S6-06 CANADIAN HIGHWAY BRIDGE DESIGN CODE
  - CAN3-S16.1-01, LIMIT STATES DESIGN OF STEEL STRUCTURES
  - CSA W59-03, WELDED STEEL CONSTRUCTION
  - CSA 040.20-04 GENERAL REQUIREMENTS FOR ROLLED OR WELDED STRUCTURAL QUALITY STEEL
  - CSA G40.21-04 STRUCTURAL QUALITY STEELS
2. ANGLES : TO G40.21-04, 300 MPa
3. W SHAPES : TO G40.21 GRADE 350W
4. BOLTS: TO ASTM A325 (DRILL 24mm $\phi$  HOLES FOR 7/8" BOLTS)
5. SUBMIT SHOP DRAWINGS FOR REVIEW PRIOR TO FABRICATION.
6. BOLTS SHALL BE INSTALLED WITH THE HEADS TO OUTSIDE OF BOTTOM FLANGE.
7. STRUCTURAL STEEL TO RECEIVE SELF PRIMING TOP COAT (TERMARUST SERIES 2100). NO PRIMER SHALL BE APPLIED BETWEEN FAYING SURFACE.

**REFERENCE DRAWINGS:**

AS BUILT DRAWINGS - ROUTE 165  
FORT GARRY-ST. VITAL CORRIDOR  
BRIDGE ALTERNATIVE A  
STEEL BOX GIRDER P.D. No. 77-23A  
(DRAWING No. B-5092-001  
THRU B-5092-234)



B.M. ELEV.	F.B.	WARDROP Engineering Inc.	
		DESIGNED BY: EFS	CHECKED BY: [Signature]
		DRAWN BY: G.I.	APPROVED BY: [Signature]
		HOR. SCALE: AS NOTED	ACCEPTED BY: [Signature] DATE: 07-08-11
		VERTICAL:	DATE: 07.08.11
0	ISSUED FOR CONSTRUCTION	DATE: 07.08.11	BY: EFS
NO.	REVISIONS	DATE	BY



THE CITY OF WINNIPEG PUBLIC WORKS DEPARTMENT ENGINEERING DIVISION		CITY DRAWING NUMBER
FORT GARRY BRIDGES EASTBOUND STRUCTURE GIRDER STRENGTHENING		B173-07-02
SPAN 5-BOTTOM FLANGE STRENGTHENING PLAN AND SECTIONS		SHEET 2 OF 3
		2