

PILE DESIGNATION

● PILE MARK
TOP OF PILE ELEV.

PILE SCHEDULE

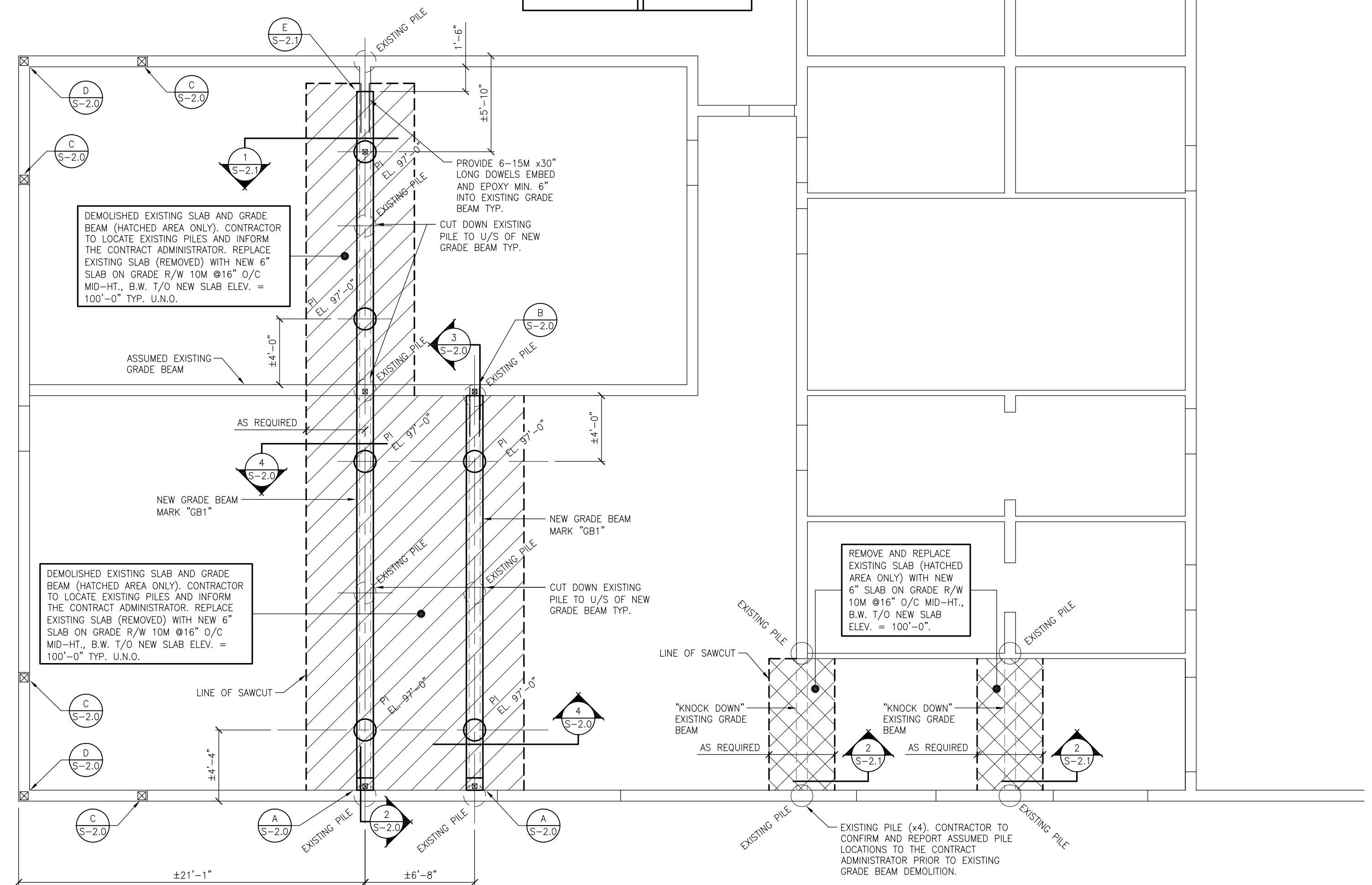
| MARK | PILE # | PILE LENGTH | REINFORCEMENT |
|------|--------|-------------|-------------------------------------|
| PI | 16" | 20'-0" | 6-15M VERTICAL 10M RINGS 36" O/C |

NOTES

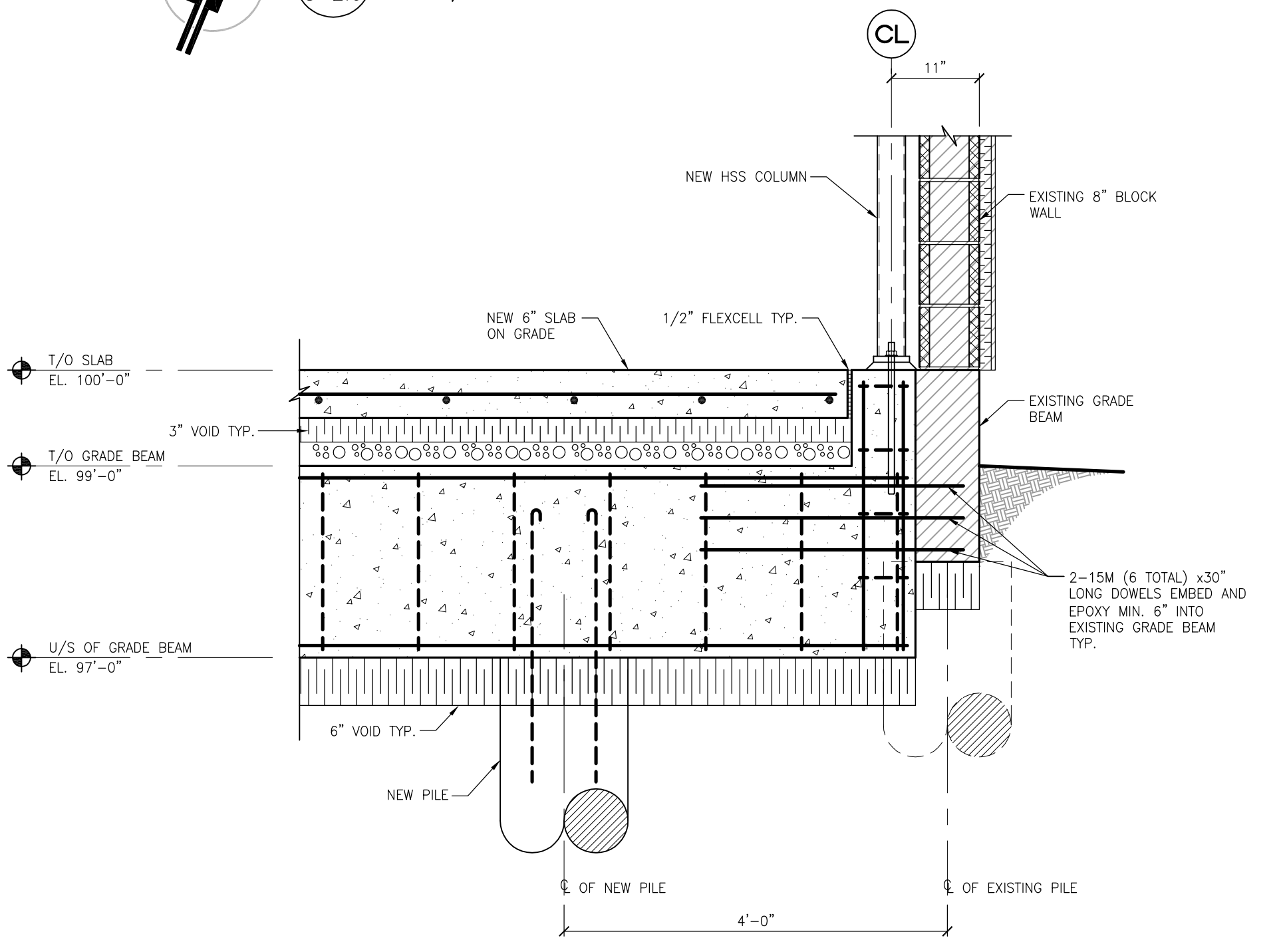
- T/O PILE ELEV. = 97'-0" TYP. U.N.O.
- REINFORCEMENT TO BE FULL LENGTH OF PILE.
- EXTEND REINFORCEMENT MIN. 18" INTO PILE CAP TYP.
- ADD 2 RINGS IN TOP 24" OF PILE.
- ASSUME DESIGN SKIN FRICTION = 250 PSF.
- PROVIDE CASING AS REQUIRED TO CONTROL SLOUGHING AND WATER SEEPAGE.

GRADE BEAM SCHEDULE

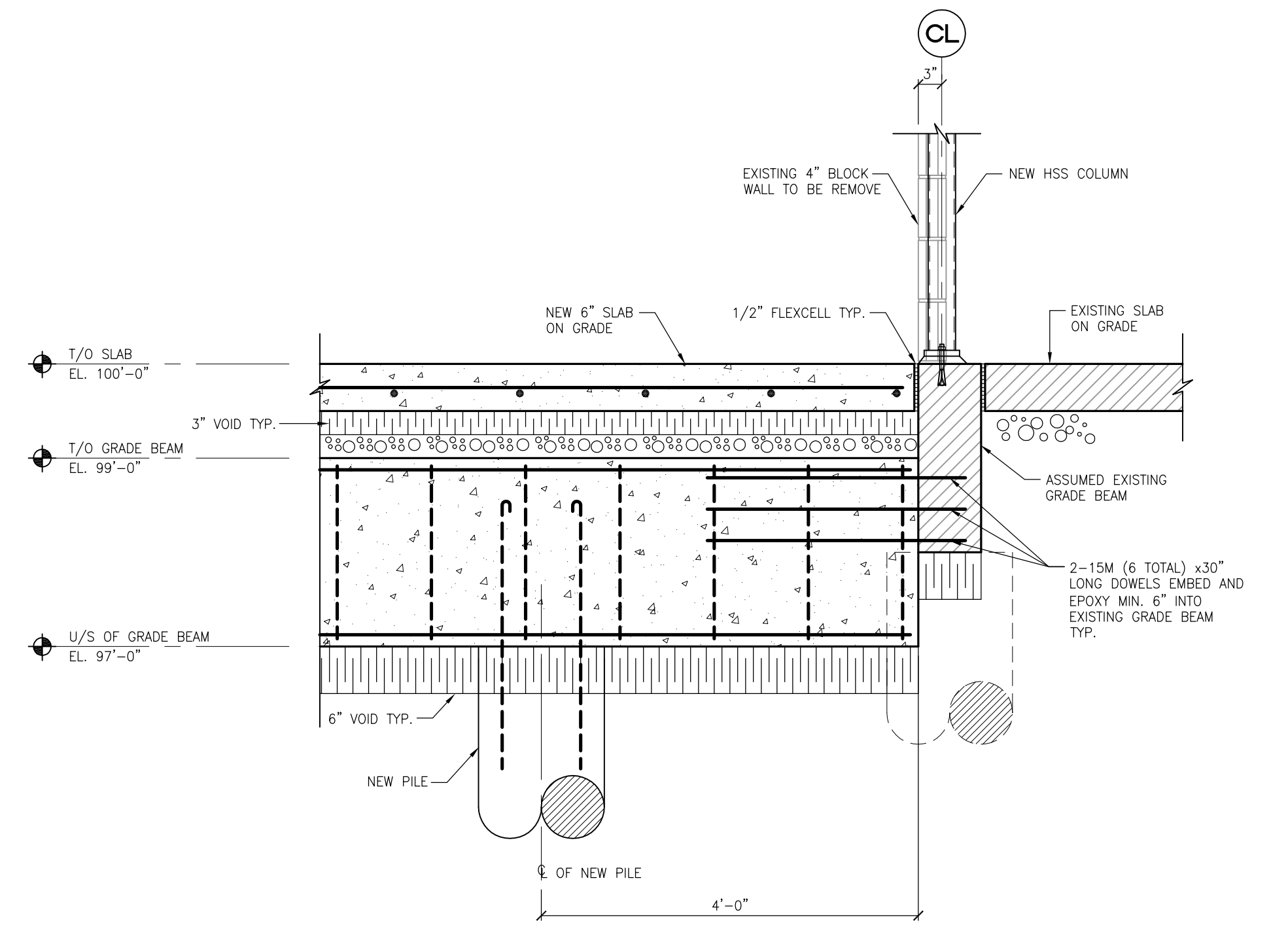
| MARK | GBI |
|---------------|---|
| SIZE | 12"x24" |
| REINFORCEMENT | 3-25M TOP 3-25M BOTTOM 10M STRIPS Ø12" O/C |
| SECTION | |



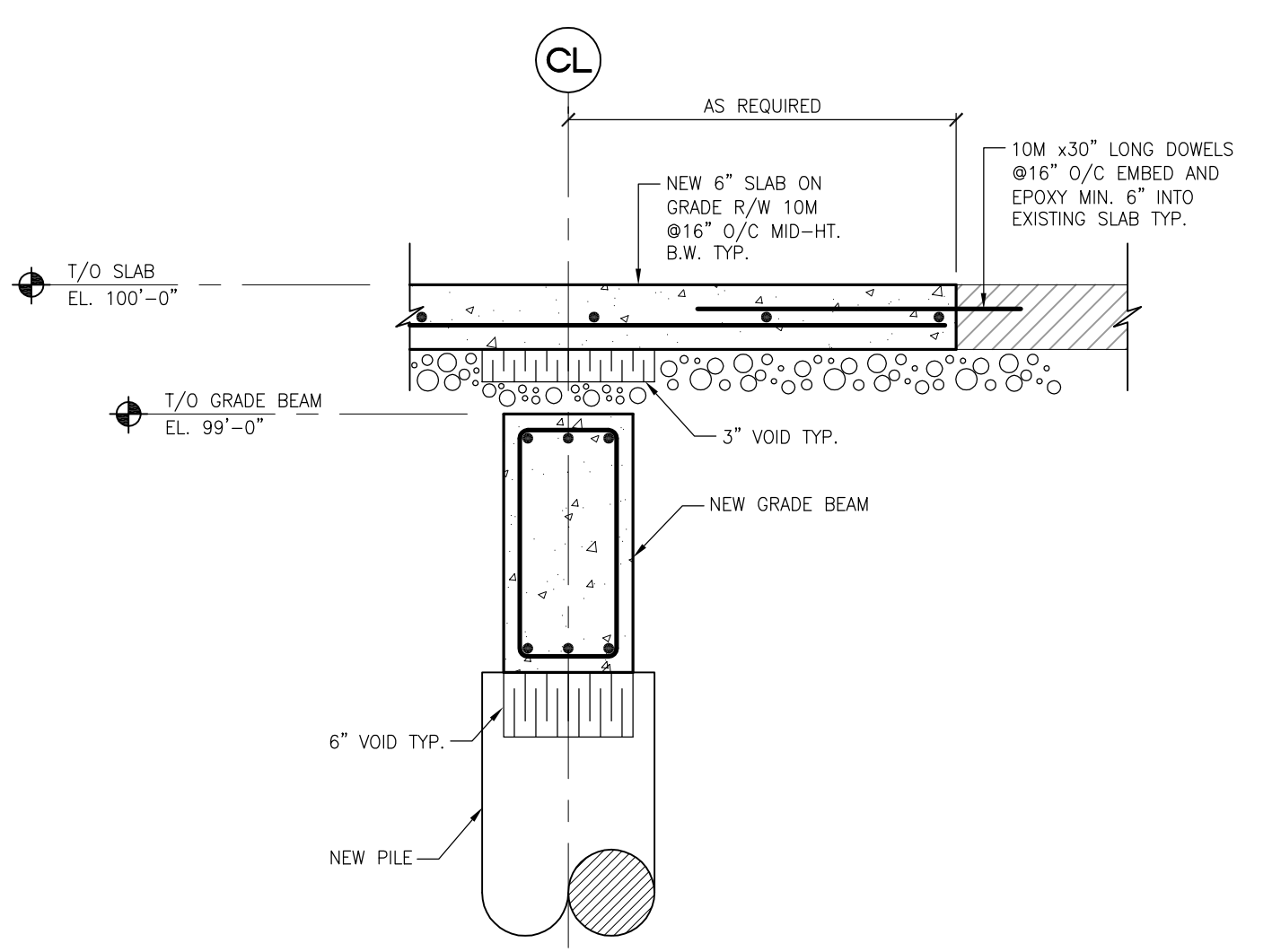
1 PARTIAL FOUNDATION PLAN (EXISTING)
SCALE: 3/16"-1'-0"



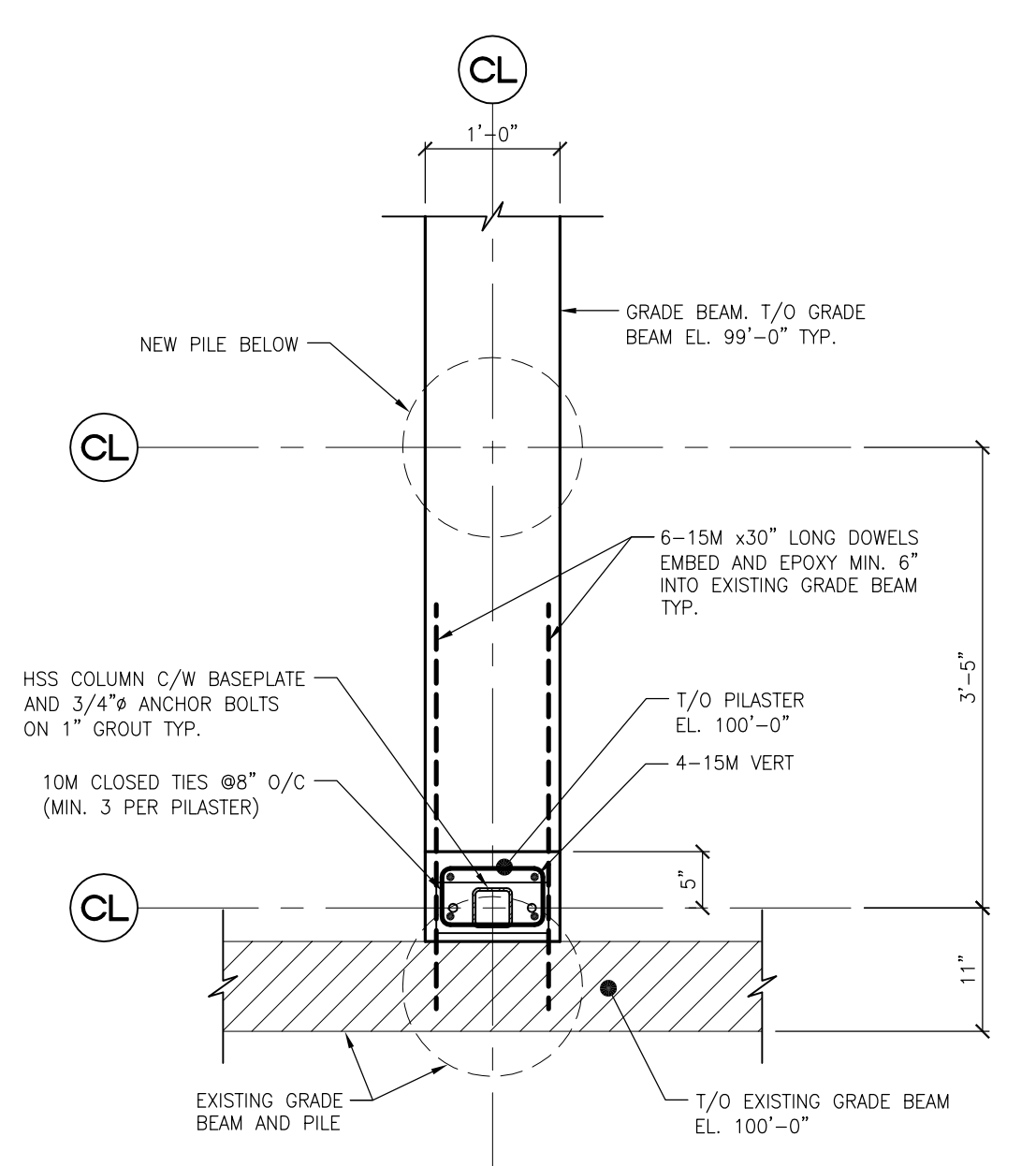
2 SECTION
SCALE: 3/4"-1'-0"



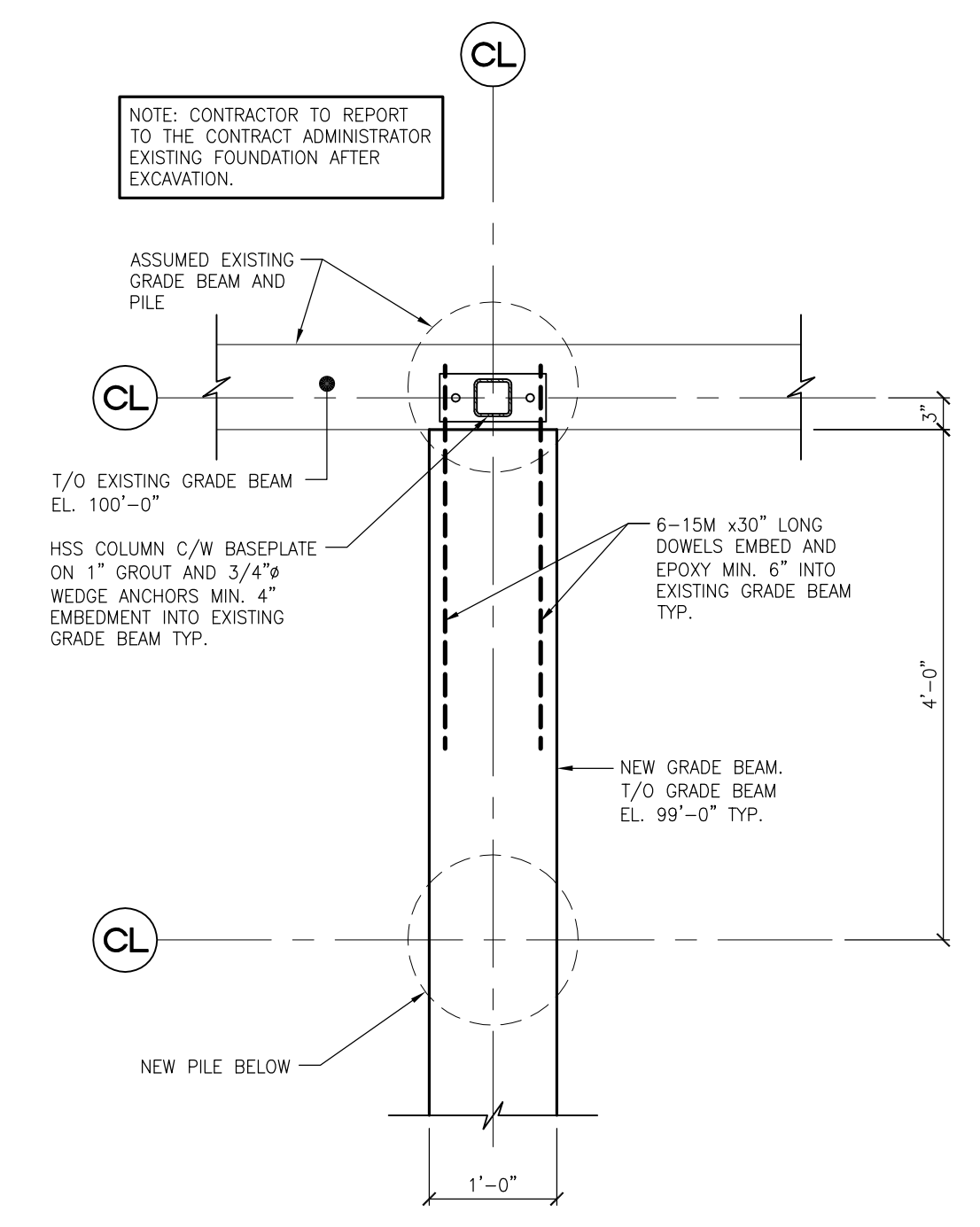
3 SECTION
SCALE: 3/4"-1'-0"



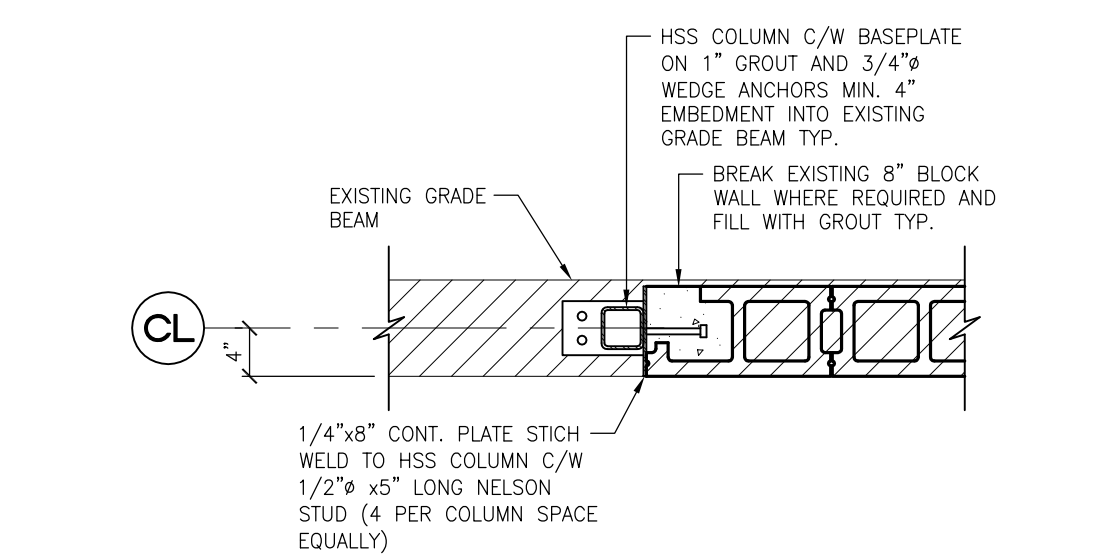
4 SECTION
SCALE: 3/4"-1'-0"



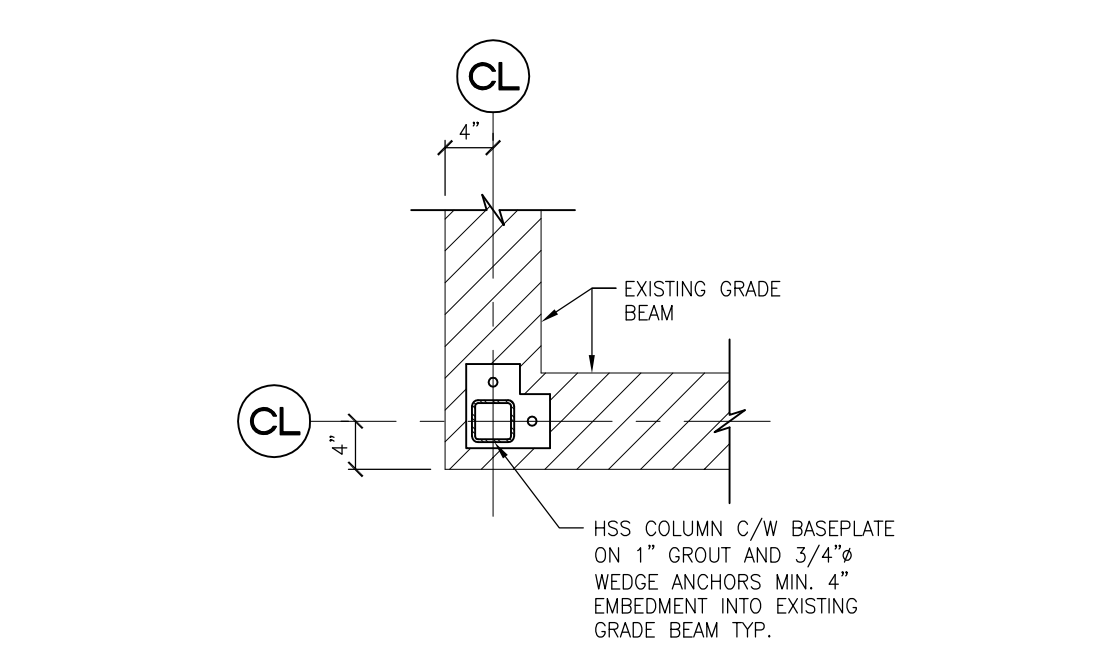
A PLAN DETAIL 'A'
SCALE: 3/4"-1'-0"



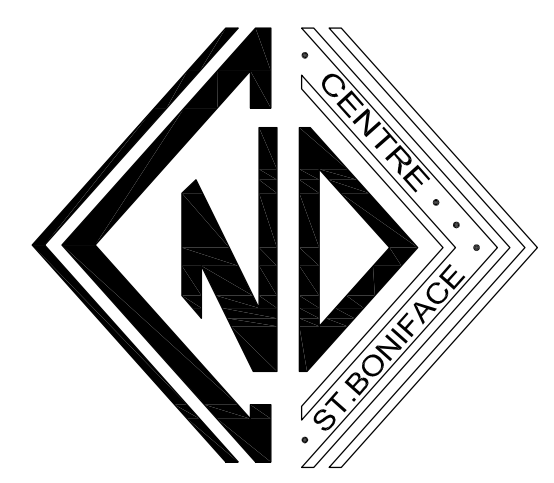
B PLAN DETAIL 'B'
SCALE: 3/4"-1'-0"



C PLAN DETAIL 'C'
SCALE: 3/4"-1'-0"



D PLAN DETAIL 'D'
SCALE: 3/4"-1'-0"



| NO. | REVISION | DATE | BY |
|-----|-------------------------------|----------|----|
| 4. | RE-ISSUED FOR BID OPPORTUNITY | 12/05/07 | NM |
| 3. | ISSUED FOR BID OPPORTUNITY | 11/27/07 | NM |
| 2. | ISSUED FOR FINAL REVIEW | 10/12/07 | NM |
| 1. | RE-ISSUED FOR REVIEW | 05/23/07 | DH |
| 0. | ISSUED FOR REVIEW | 05/08/07 | AW |

THIS DRAWING IS THE EXCLUSIVE PROPERTY OF THE CONTRACT ADMINISTRATOR AND CAN BE REPRODUCED ONLY WITH THE PERMISSION OF THE CONTRACT ADMINISTRATOR IN WHICH CASE THE REPRODUCTION MUST BEAR THE NAME OF THE CONTRACT ADMINISTRATOR.

THIS DRAWING SHALL NOT BE SCALED. FOLLOW GIVEN DIMENSIONS ONLY.

THE CONTRACTOR SHALL SATISFY HIMSELF THAT ALL DIMENSIONS AND INFORMATION SHOWN ARE CORRECT.

PRIOR TO COMMENCEMENT OF WORK REPORT ANY DISCREPANCIES TO THE CONTRACT ADMINISTRATOR.

VARIATIONS AND MODIFICATIONS TO WORK SHOWN WILL NOT BE ALLOWED WITHOUT WRITTEN PERMISSION OF THE CONTRACT ADMINISTRATOR.

CONSULTANT: TOWER PROJECT NO. : 6184

TOWER ENGINEERING GROUP
208 - 897 CORYDON AVE. WINNIPEG, MB R3M 0W7
TEL: (204) 925-1150 FAX: (204) 925-1155
EMAIL: towereng@towereng.ca WEB: www.towereng.ca

APEGM
Certificate of Authorization
Tower Engineering Group
No. 1918 Expiry: April 30, 2008

CALNITSKY ASSOCIATES ARCHITECTS

ARCHITECTURE: 124 Nassau Street North, Winnipeg, Manitoba R3L 2H1
INTERIOR DESIGN: Winnipeg, Manitoba R3L 2H1
Tel: (204) 453-6441 Fax: (204) 453-3392
E-mail: caa@escape.ca

NOTRE DAME COMMUNITY CENTRE
271 DE LA CATHEDRALE AVE.
WINNIPEG, MANITOBA

FOUNDATION PLAN, SECTIONS AND DETAILS

| DRAWN BY | SCALE | SHEET NUMBER |
|----------------|----------|--------------|
| NB | AS NOTED | S-20 |
| CHECKED BY | DATE | |
| DH/NM | MAY 2007 | |
| PROJECT NUMBER | REVISION | |
| 06-012 | 4. | |