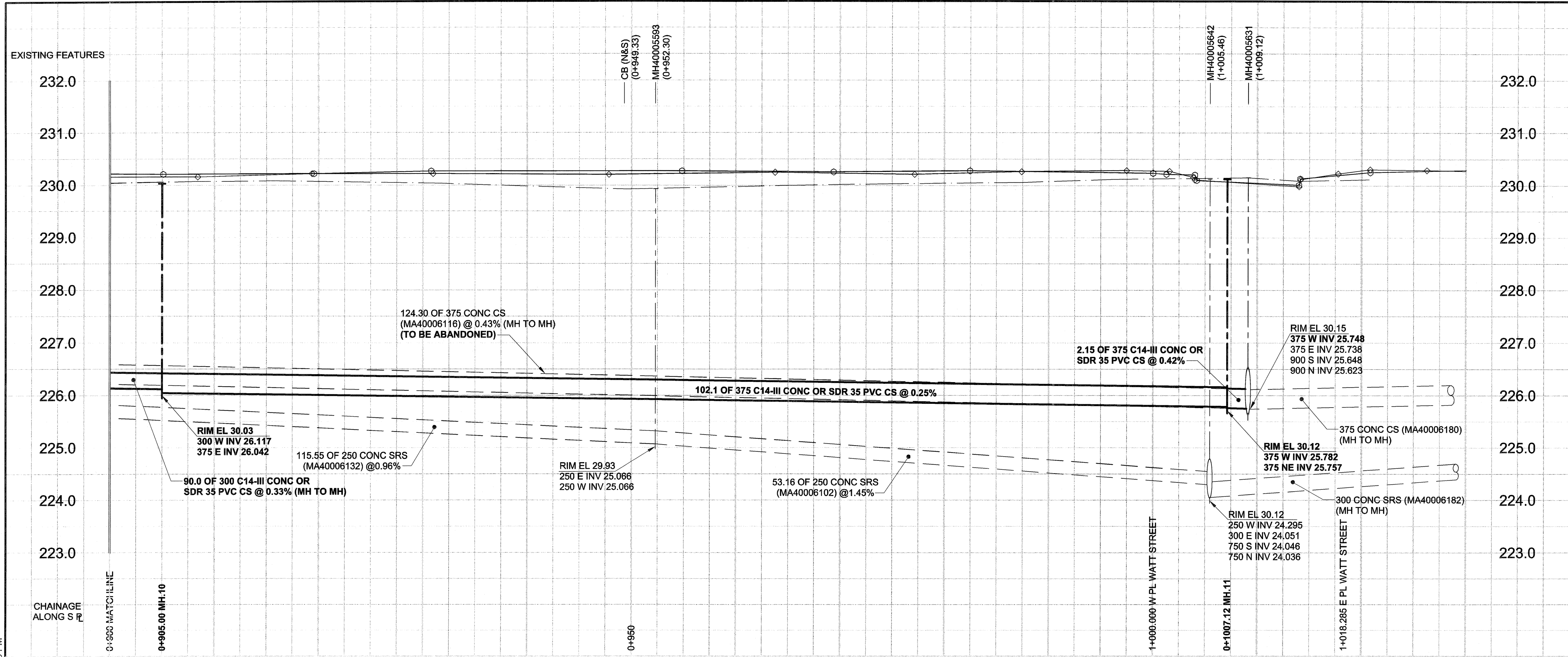


D SIZE 22" x 34" (559mm x 864mm)

PLOT: 07/08/21 2:32:03 PM

UMA AECOM REVIEW DRFT CHK



WATER SERVICE INFORMATION

ADDRESS	PROPERTY	SIZE (mm)	PL TIE	JUNCTION TIE	REMARKS
483 OAKVIEW ST (RESIDENTIAL)				96.1 W OF MH AT WATT ST	NO INFO
484 OAKVIEW ST (RESIDENTIAL)				110.3 W OF MH AT WATT ST	NO INFO
485 OAKVIEW ST (RESIDENTIAL)				78.6 W OF MH AT WATT ST	NO INFO
486 OAKVIEW ST (RESIDENTIAL)				81.1 W OF MH AT WATT ST	NO INFO
487 OAKVIEW ST (RESIDENTIAL)				64.9 W OF MH AT WATT ST	NO INFO
488 OAKVIEW ST (RESIDENTIAL)				67.1 W OF MH AT WATT ST	NO INFO
489 OAKVIEW ST (RESIDENTIAL)				51.5 W OF MH AT WATT ST	NO INFO
491 OAKVIEW ST (RESIDENTIAL)				43.7 W OF MH AT WATT ST	NO INFO
492 OAKVIEW ST (RESIDENTIAL)				39.0 W OF MH AT WATT ST	NO INFO
494 OAKVIEW ST (RESIDENTIAL)				24.4 W OF MH AT WATT ST	NO INFO
495 OAKVIEW ST (RESIDENTIAL)				40.2 W OF MH AT WATT ST	NO INFO
497 OAKVIEW ST (RESIDENTIAL)				25.3 W OF MH AT WATT ST	NO INFO
498 OAKVIEW ST (RESIDENTIAL)				10.4 W OF MH AT WATT ST	NO INFO
499 OAKVIEW ST (RESIDENTIAL)				9.8 W OF MH AT WATT ST	NO INFO
502 OAKVIEW ST (RESIDENTIAL)					NO INFO

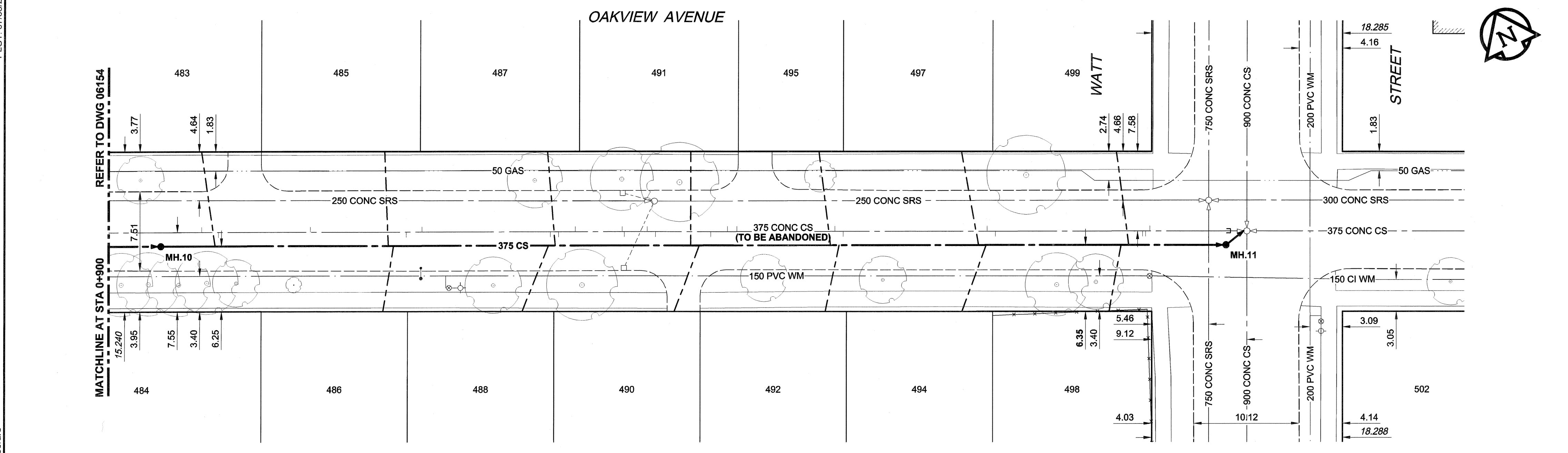
SEWER SERVICE INFORMATION

ADDRESS	SIZE	PL TIE	JUNCTION TIE	REMARKS
483 OAKVIEW ST			96.1 W OF MH AT WATT ST	
484 OAKVIEW ST			110.3 W OF MH AT WATT ST	
485 OAKVIEW ST			78.6 W OF MH AT WATT ST	
486 OAKVIEW ST			81.1 W OF MH AT WATT ST	
487 OAKVIEW ST			64.9 W OF MH AT WATT ST	
488 OAKVIEW ST			67.1 W OF MH AT WATT ST	
489 OAKVIEW ST			51.5 W OF MH AT WATT ST	
491 OAKVIEW ST			43.7 W OF MH AT WATT ST	
492 OAKVIEW ST			39.0 W OF MH AT WATT ST	
494 OAKVIEW ST			24.4 W OF MH AT WATT ST	
495 OAKVIEW ST			40.2 W OF MH AT WATT ST	
497 OAKVIEW ST			25.3 W OF MH AT WATT ST	
498 OAKVIEW ST			10.4 W OF MH AT WATT ST	
499 OAKVIEW ST			9.8 W OF MH AT WATT ST	
502 OAKVIEW ST				NO INFO

SEWER JUNCTION INFORMATION

REF. MH*	DIST FROM*	SIZE*	CLOCK AT*
MH40005578	3.10	1500	02
MH40005578	8.80	1500	01
MH40005578	14.40	1500	02
MH40005578	24.10	1500	11
MH40005578	25.70	1500	02
MH40005578	34.50	1500	11
MH40005578	43.70	1500	02
MH40005578	45.20	1500	10
MH40005578	57.50	1500	02
MH40005578	58.30	1500	02
MH40005578	59.90	1500	11
MH40005578	64.40	1500	11
MH40005578	64.60	1500	01
MH40005578	66.80	1500	02
MH40005578	67.60	1500	02
MH40005578	72.90	1500	02
MH40005578	74.50	1500	09
MH40005578	75.40	1500	10
MH40005578	84.80	1500	10
MH40005578	85.60	1500	02
MH40005578	99.40	1500	10
MH40005578	100.20	1500	02
MH40005578	114.30	1500	02
MH40005578	114.60	1500	01
MH40005578	115.00	1500	10

*JUNCTION LOCATION FROM VIDEO INSPECTION



WARNING
 IF POWER EQUIPMENT OR EXPLOSIVES ARE TO BE USED FOR EXCAVATION ON THIS PROJECT, THE CONTRACTOR MUST:
 1) NOTIFY THE GAS COMPANY OF THE PROPOSED LOCATION OF EXCAVATION.
 2) TAKE PRECAUTION TO AVOID DAMAGE TO GAS COMPANY INSTALLATIONS.
 SEE PROVINCIAL REGULATION 140/92 FOR DETAILS

METRIC
 WHOLE NUMBERS INDICATE MILLIMETRES
 DECIMALIZED NUMBERS INDICATE METRES

EXISTING	LEGEND - PLAN	NEW	EXISTING	LEGEND - PROFILE	NEW
150 WM	WATERMAIN	150 WM	CURB STOP	150 WM	WATERMAIN
300 LDS	LAND DRAINAGE SEWER	300 LDS	REDUCER	300 LDS	LAND DRAINAGE SEWER
250 WWS	WASTE WATER SEWER	250 WWS	COUPLING	250 WWS	WASTE WATER SEWER
MANHOLE		MANHOLE	ANODE	MANHOLE	MANHOLE
CATCH BASIN		CATCH BASIN	HYDRO	CATCH BASIN	CATCH BASIN
CURB INLET		CURB INLET	MTS	CURB INLET	CURB INLET
CULVERT		CULVERT	GAS	CULVERT	CULVERT
PIPE ABANDONMENTS		PIPE ABANDONMENTS	TESTHOLE	PIPE ABANDONMENTS	PIPE ABANDONMENTS
SURVEY BAR		SURVEY BAR	LAMP STANDARD	SURVEY BAR	SURVEY BAR
			TREE		

LOCATION APPROVED
 UNDERGROUND STRUCTURES
 SUPR. U/G STRUCTURES DATE COMMITTEE
 NOTE:
 LOCATION OF UNDERGROUND STRUCTURES AS SHOWN ARE BASED ON THE BEST INFORMATION AVAILABLE. BUT NO GUARANTEE IS GIVEN THAT ALL EXISTING UTILITIES ARE SHOWN OR THAT THE GIVEN LOCATIONS ARE EXACT. CONFIRMATION OF EXISTENCE AND EXACT LOCATION OF ALL SERVICES MUST BE OBTAINED FROM THE INDIVIDUAL UTILITIES BEFORE PROCEEDING WITH CONSTRUCTION.

NO.	REVISIONS	DATE	BY
0	ISSUED FOR CONSTRUCTION	07/08/21	KMB
		YY/MM/DD	

DESIGNED BY	CHECKED BY
MJR	[Signature]
DRAWN BY	APPROVED BY
KMB	[Signature]
HOR. SCALE	VERT. SCALE
1:250	1:50
DATE	DATE
07/08/21	07/08/21

UMA AECOM
 Certificate of Authorization
 UMA Engineering Ltd. (MB)
 No. 256 Date: 07/08/21

PROFESSIONAL'S SEAL
 PROVINCE OF MANITOBA
 21 Aug 2021
 C.C. MACEY
 REGISTERED ENGINEER
 CONSULTANT DRAWING NO. 27
 D265-217-03

THE CITY OF WINNIPEG
WATER AND WASTE DEPARTMENT
2007 COMBINED SEWER RENEWALS
BY EXTERNAL POINT REPAIRS AND REPLACEMENTS
CONTACT 15
OAKVIEW AVENUE
 STA 0+900
 TO WATT STREET

SHEET 27 OF 29
 CITY DRAWING NUMBER
06155
 REV 0

BID OPPORTUNITY NO. 573-2007