

David Wagner Associates Inc.

4 - 430 River Avenue Winnipeg, Manitoba, R3L 0C6 (204) 452-2426

LANDSCAPE ARCHITECTURE • URBAN DESIGN • GOLF COURSE ARCHITECTURE

PRELIMINARY NOT FOR CONSTRUCTION

NOTE:
LOCATION OF UNDERGROUND STRUCTURES AS SHOWN ARE BASED ON THE BEST INFORMATION AVAILABLE BUT NO GUARANTEE IS GIVEN THAT ALL EXISTING UTILITIES ARE SHOWN OR THAT THE GIVEN LOCATIONS ARE EXACT. CONFIRMATION OF EXISTENCE AND EXACT LOCATION OF ALL SERVICES MUST BE OBTAINED FROM THE INDIVIDUAL UTILITIES BEFORE PROCEEDING WITH CONSTRUCTION.

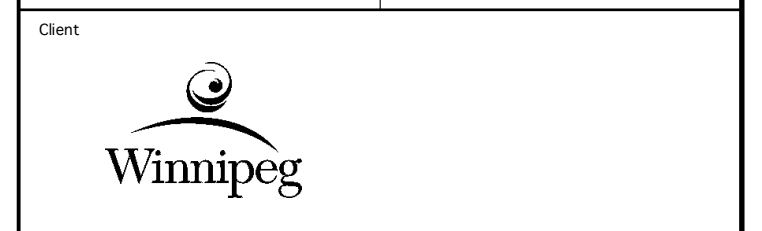
Manager Parks and Open Space Division
Released For Construction Date

DO NOT SCALE DRAWINGS

revisions	description	date
5		
4		
3		
2		
1	99% Design Submission	01-08-07
0	33% Design Submission	05-06-07

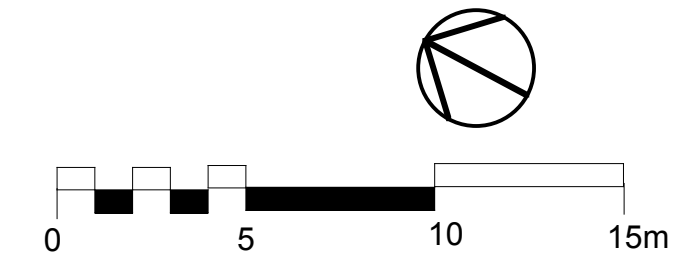
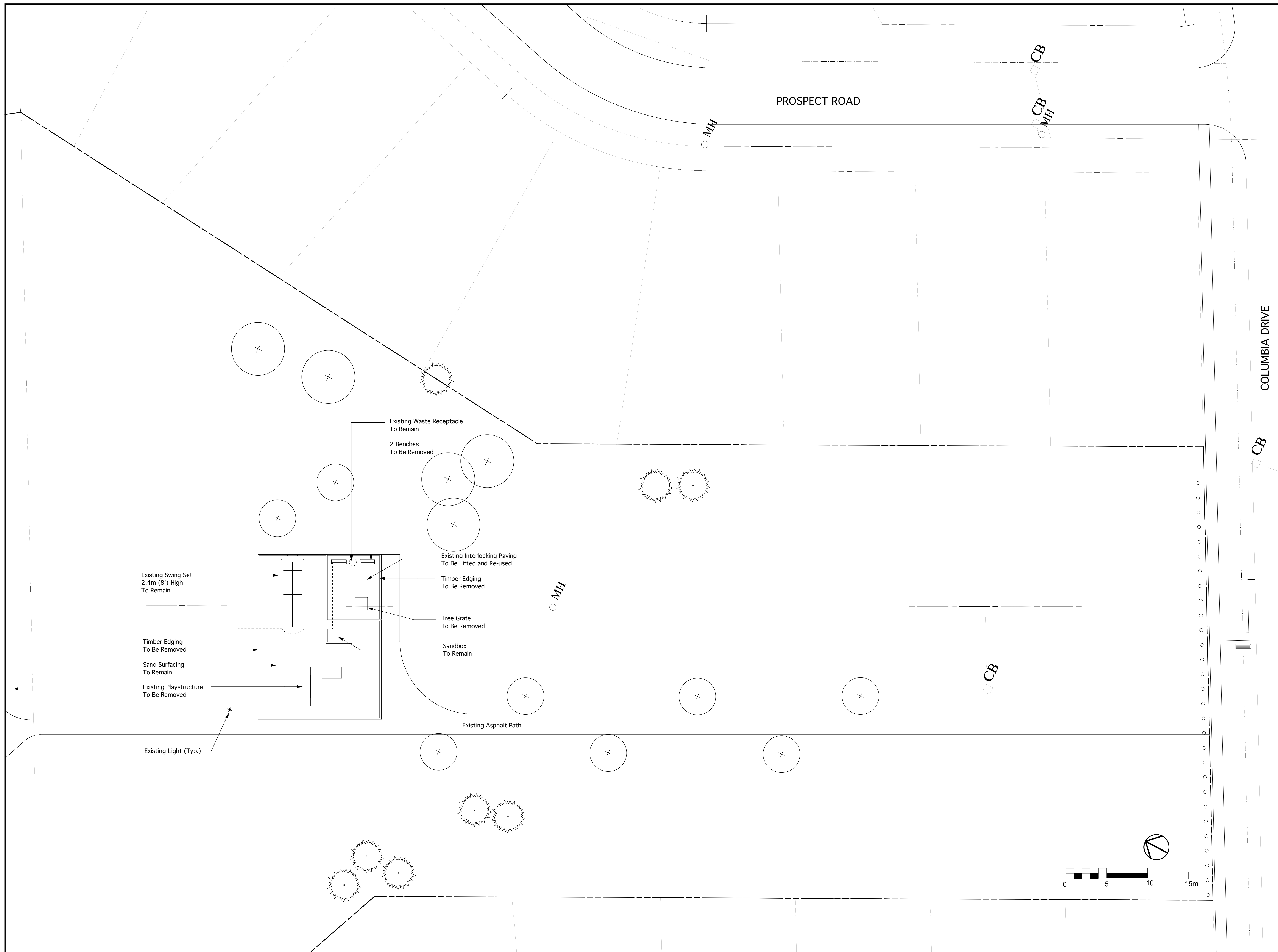
project title
COLUMBIA PARK
 WHYTE RIDGE
 WINNIPEG, MANITOBA

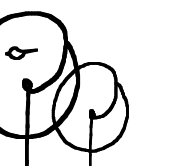
approved by		scale	1:200
designed by	DW	drawn by	LLW
		date	01 08 2007



drawing title
**Existing Conditions
 and Removals**

project no.	sheet	revision no.
0707-1	L1	0





David Wagner Associates Inc.

4 - 430 River Avenue Winnipeg, Manitoba, R3L 0C6 (204) 452-2426

LANDSCAPE ARCHITECTURE • URBAN DESIGN • GOLF COURSE ARCHITECTURE

PRELIMINARY NOT FOR CONSTRUCTION

NOTE:
LOCATION OF UNDERGROUND STRUCTURES AS SHOWN ARE BASED ON THE BEST INFORMATION AVAILABLE BUT NO GUARANTEE IS GIVEN THAT ALL EXISTING UTILITIES ARE SHOWN OR THAT THE GIVEN LOCATIONS ARE EXACT. CONFIRMATION OF EXISTENCE AND EXACT LOCATION OF ALL SERVICES MUST BE OBTAINED FROM THE INDIVIDUAL UTILITIES BEFORE PROCEEDING WITH CONSTRUCTION.

Manager Parks and Open Space Division
Released For Construction Date

DO NOT SCALE DRAWINGS

5		
4		
3		
2	99% Design Submission	01-08-07
1	66% Design Submission	13-07-07
0	33% Design Submission	05-06-07
revisions	description	date

project title

COLUMBIA PARK
WHYTE RIDGE
WINNIPEG, MANITOBA

approved by

designed by DW scale 1:100

drawn by LLW date 01 08 2007

Client

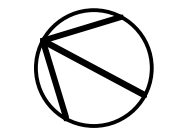
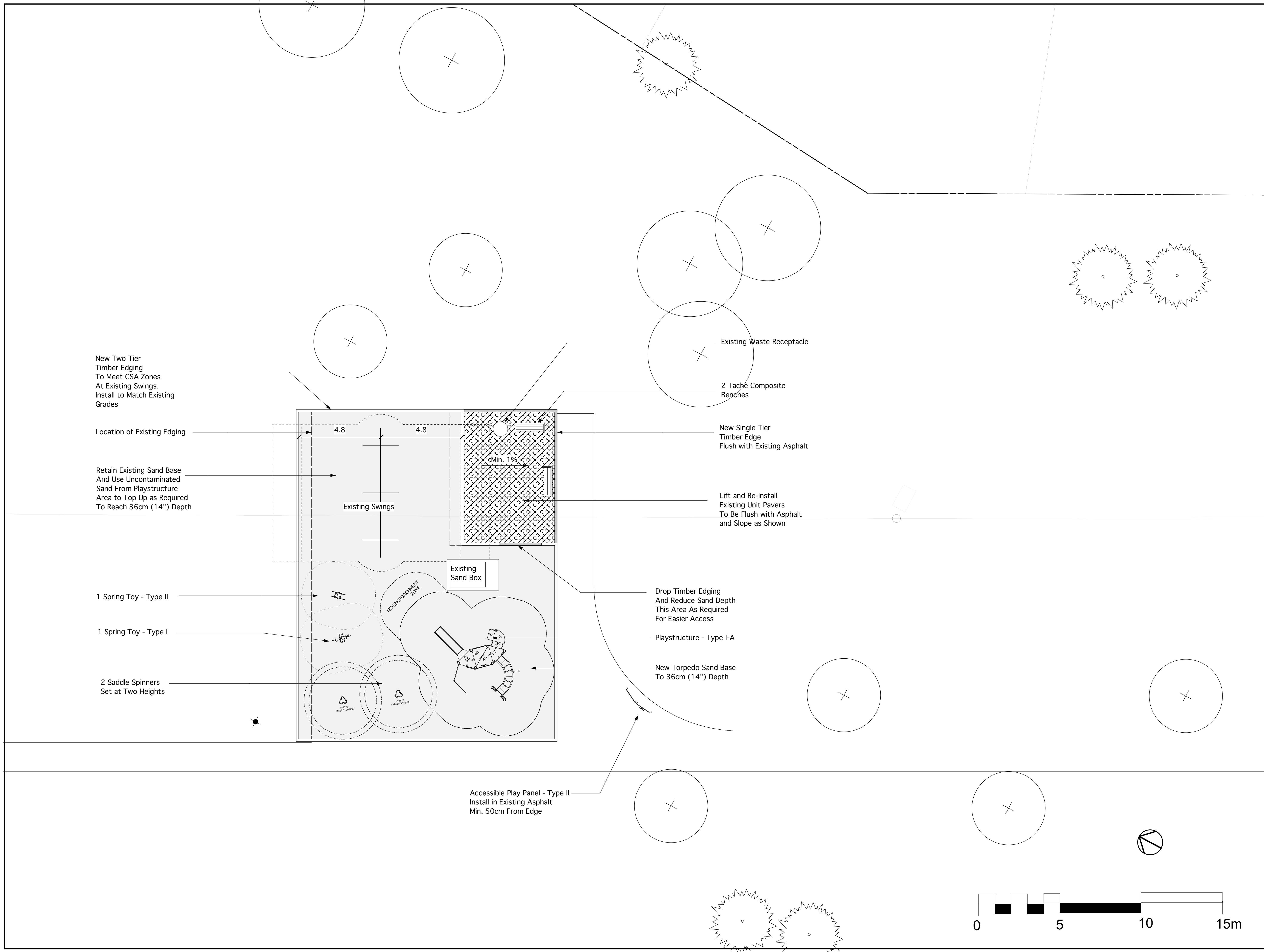


drawing title

Playground Renovation

project no. sheet revision no.

0707-1 L2 0



ASSINBOINE RIVER

Existing Trails

Existing Shed

Existing Parking Lot

Existing Granular Path

Existing Swing Set
To Remain

Existing Playstructure
To Be Removed

Existing Bench
To Be Removed

Existing Timber Edge
And Sand Base
To Be Removed

Existing Bench
To Be Removed

Existing Picnic Table
To Remain

**PRELIMINARY
NOT FOR CONSTRUCTION**

NOTE:
LOCATION OF UNDERGROUND STRUCTURES AS SHOWN ARE BASED ON THE BEST INFORMATION AVAILABLE BUT NO GUARANTEE IS GIVEN THAT ALL EXISTING UTILITIES ARE SHOWN OR THAT THE GIVEN LOCATIONS ARE EXACT. CONFIRMATION OF EXISTENCE AND EXACT LOCATION OF ALL SERVICES MUST BE OBTAINED FROM THE INDIVIDUAL UTILITIES BEFORE PROCEEDING WITH CONSTRUCTION.

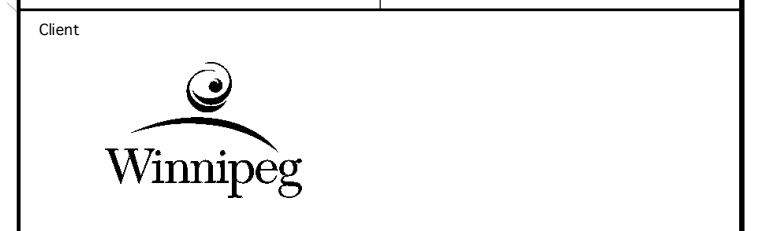
Manager Parks and Open Space Division
Released For Construction Date

DO NOT SCALE DRAWINGS

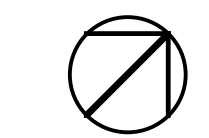
revisions	description	date
5		
4		
3		
2		
1	99% Design Submission	01-08-07
0	33% Design Submission	05-06-07

project title
CARON PARK
50 CASS STREET
WINNIPEG, MANITOBA

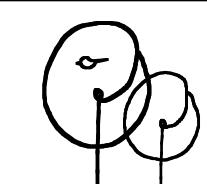
approved by		scale	1:200
designed by	LLW	drawn by	LLW
		date	01 08 2007



drawing title
**Existing Conditions
and Removals**



project no.	sheet	revision no.
0707-2	L1	0



David Wagner Associates Inc.
 4 - 430 River Avenue Winnipeg, Manitoba, R3L 0C6 (204) 452-2426
 LANDSCAPE ARCHITECTURE • URBAN DESIGN • GOLF COURSE ARCHITECTURE

**PRELIMINARY
NOT FOR CONSTRUCTION**

NOTE:
 LOCATION OF UNDERGROUND STRUCTURES AS SHOWN ARE BASED ON THE BEST INFORMATION AVAILABLE BUT NO GUARANTEE IS GIVEN THAT ALL EXISTING UTILITIES ARE SHOWN OR THAT THE GIVEN LOCATIONS ARE EXACT. CONFIRMATION OF EXISTENCE AND EXACT LOCATION OF ALL SERVICES MUST BE OBTAINED FROM THE INDIVIDUAL UTILITIES BEFORE PROCEEDING WITH CONSTRUCTION.

Manager Parks and Open Space Division
 Released For Construction Date

DO NOT SCALE DRAWINGS

5		
4		
3		
2	99% Design Submission	01-08-07
1	66% Design Submission	13-07-07
0	33% Design Submission	05-06-07
revisions	description	date

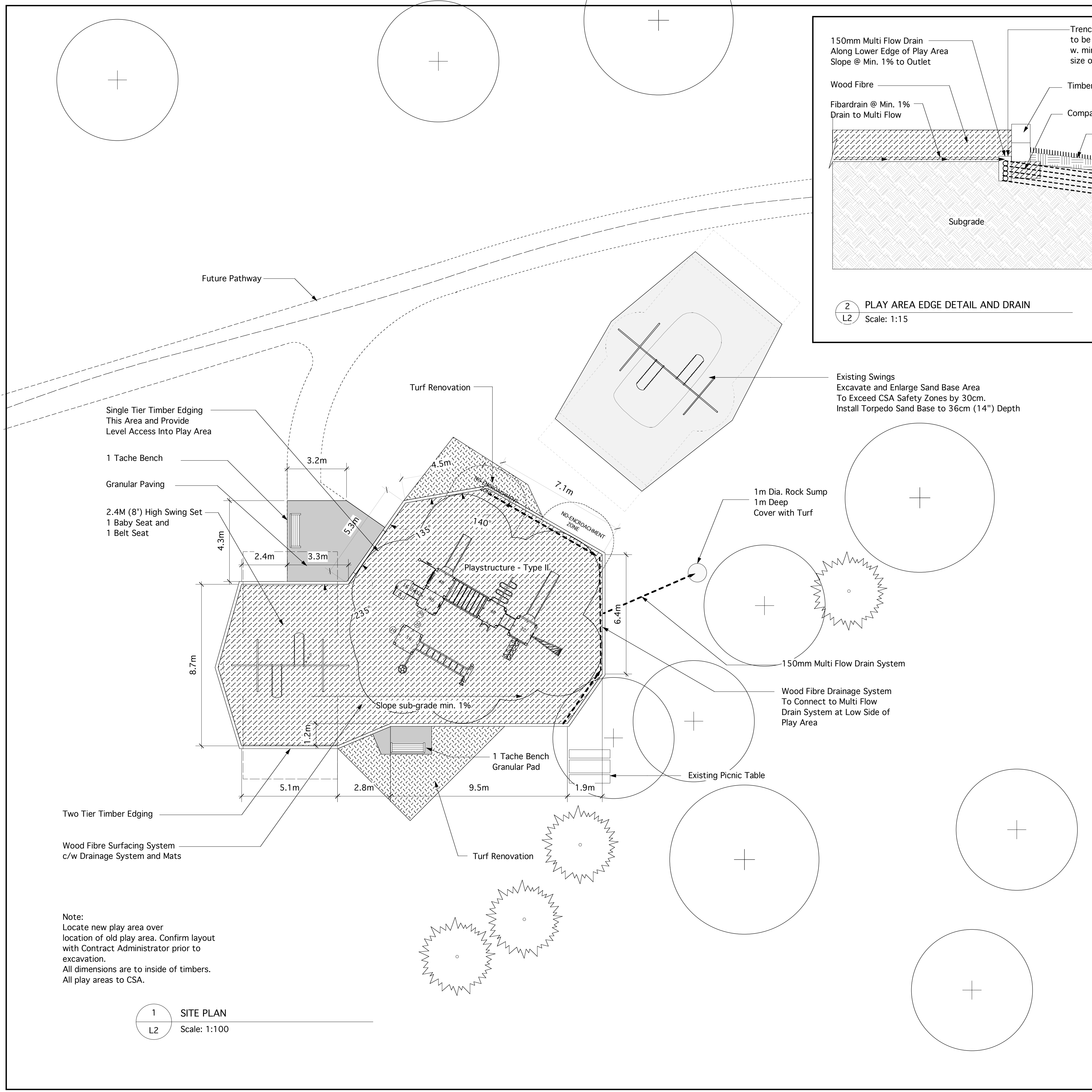
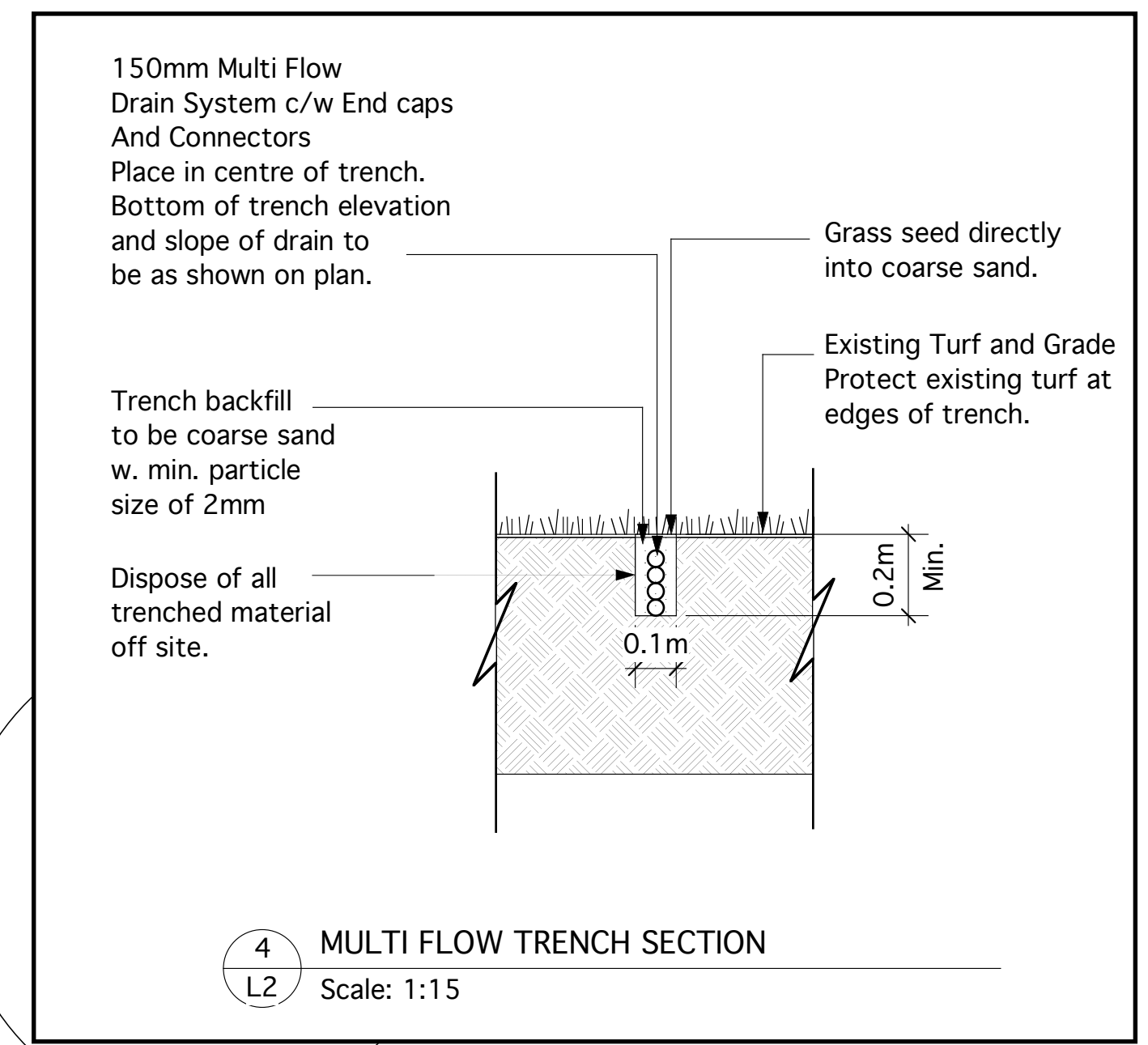
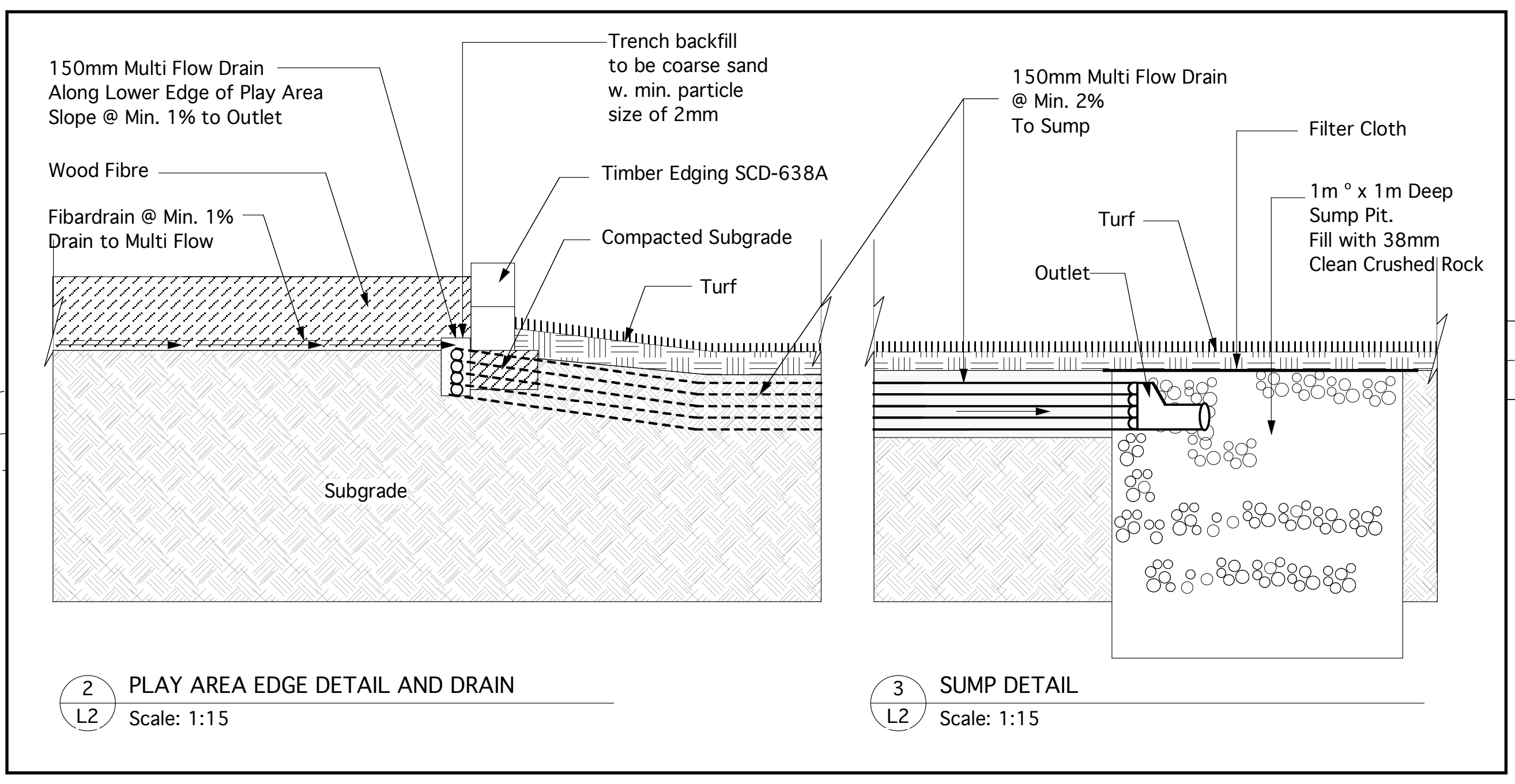
project title
CARON PARK
50 CASS STREET
WINNIPEG, MANITOBA

approved by		
designed by	LLW	scale 1:100
drawn by	LLW	date 01 08 2007
Client		

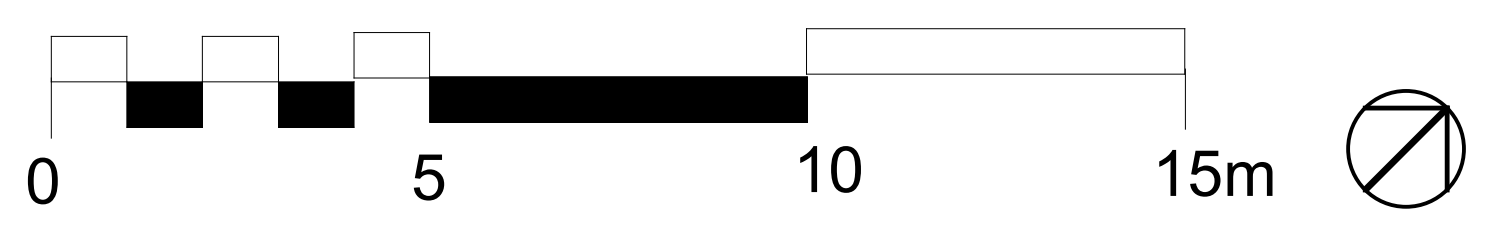


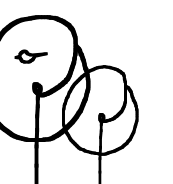
drawing title
Playground Renovation

project no.	sheet	revision no.
0707-2	L2	0



Note:
 Locate new play area over location of old play area. Confirm layout with Contract Administrator prior to excavation.
 All dimensions are to inside of timbers.
 All play areas to CSA.





David Wagner Associates Inc.

4 - 430 River Avenue Winnipeg, Manitoba, R3L 0C6 (204) 452-2426

LANDSCAPE ARCHITECTURE • URBAN DESIGN • GOLF COURSE ARCHITECTURE

PRELIMINARY NOT FOR CONSTRUCTION

NOTE:
LOCATION OF UNDERGROUND STRUCTURES AS SHOWN ARE BASED ON THE BEST INFORMATION AVAILABLE BUT NO GUARANTEE IS GIVEN THAT ALL EXISTING UTILITIES ARE SHOWN OR THAT THE GIVEN LOCATIONS ARE EXACT. CONFIRMATION OF EXISTENCE AND EXACT LOCATION OF ALL SERVICES MUST BE OBTAINED FROM THE INDIVIDUAL UTILITIES BEFORE PROCEEDING WITH CONSTRUCTION.

Manager Parks and Open Space Division
Released For Construction Date

DO NOT SCALE DRAWINGS

5		
4		
3		
2		
1	99% Design Submission	01-08-07
0	33% Design Submission	29-05-07
revisions	description	date

project title

SMITHDALE PARK

3199 VIALOUX DRIVE
WINNIPEG, MANITOBA

approved by

designed by LLW scale 1:200

drawn by LLW date 01 08 2007

Client



drawing title

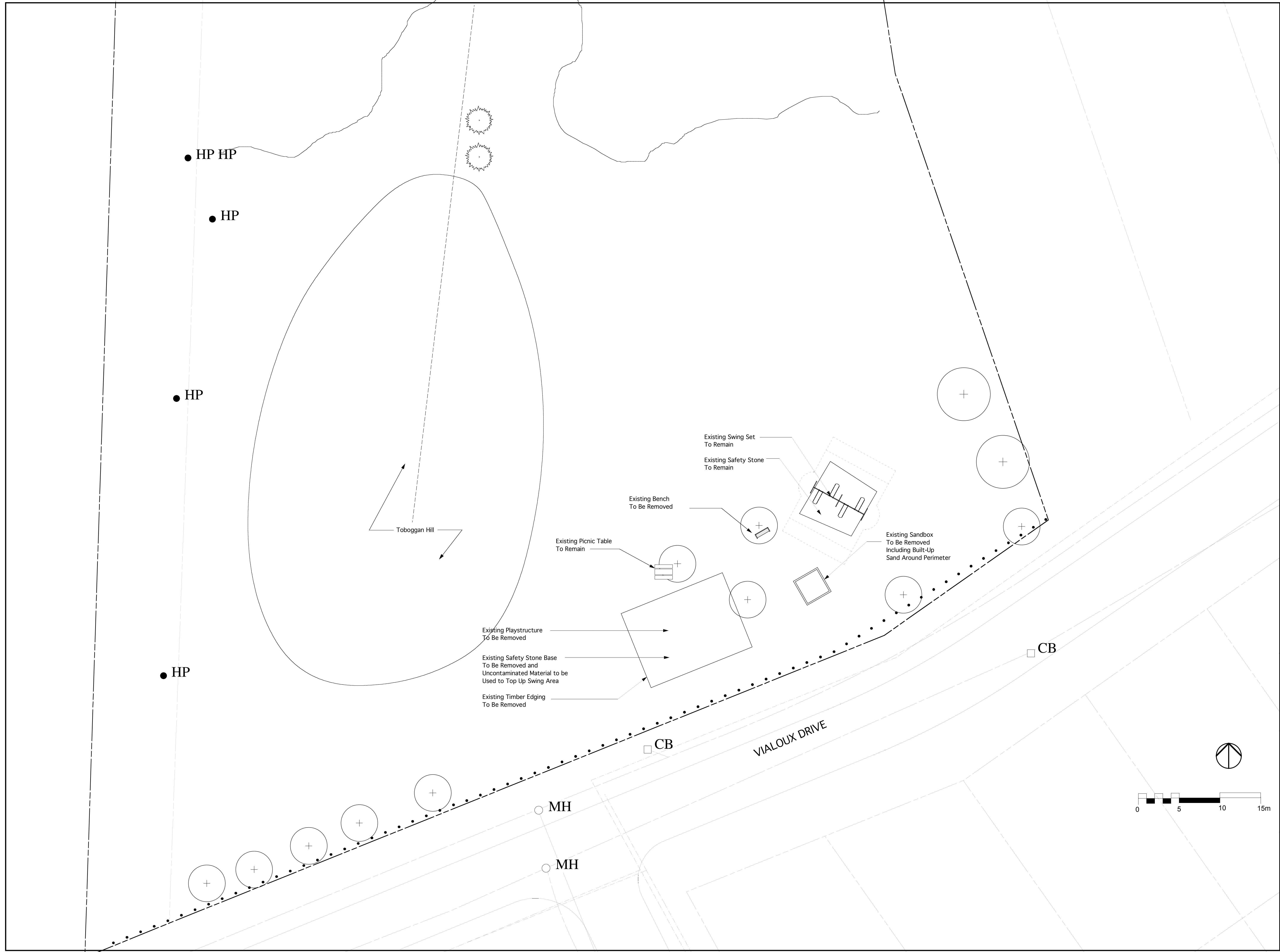
Existing Conditions and Removals

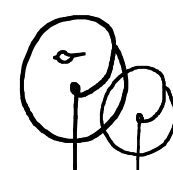
project no. sheet revision no.

0707-3

L1

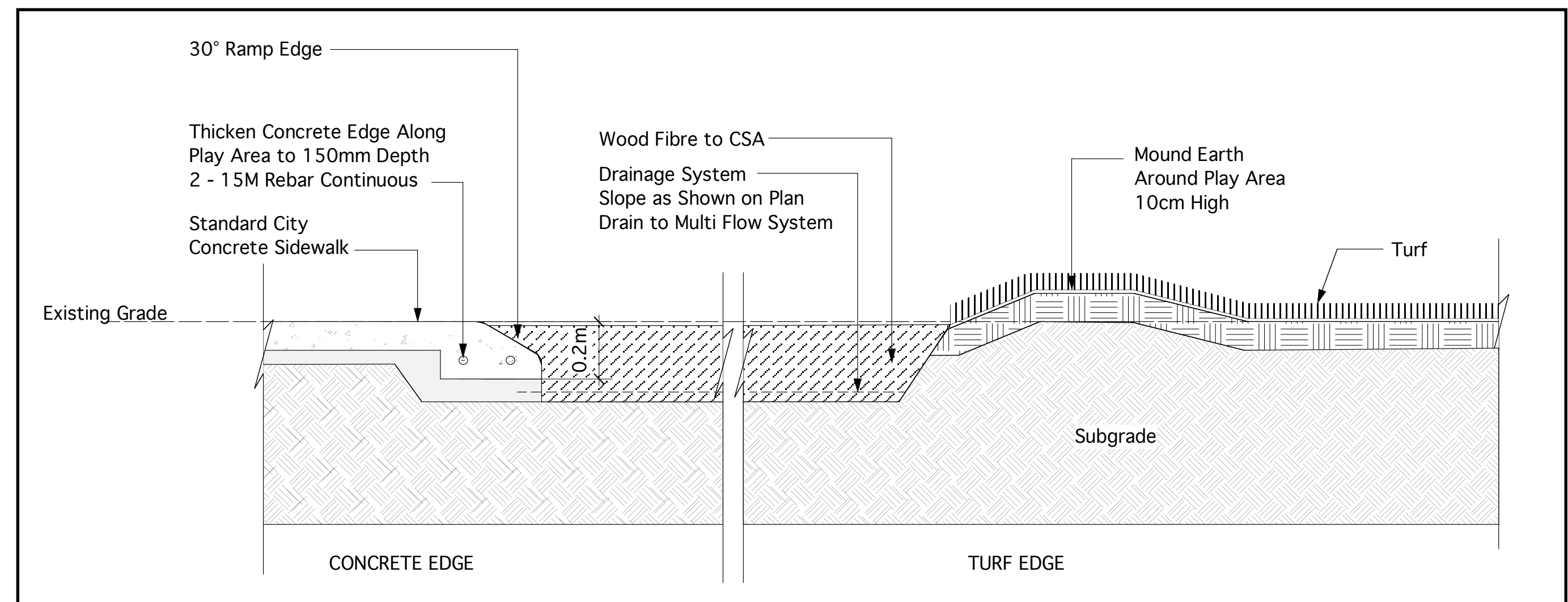
0



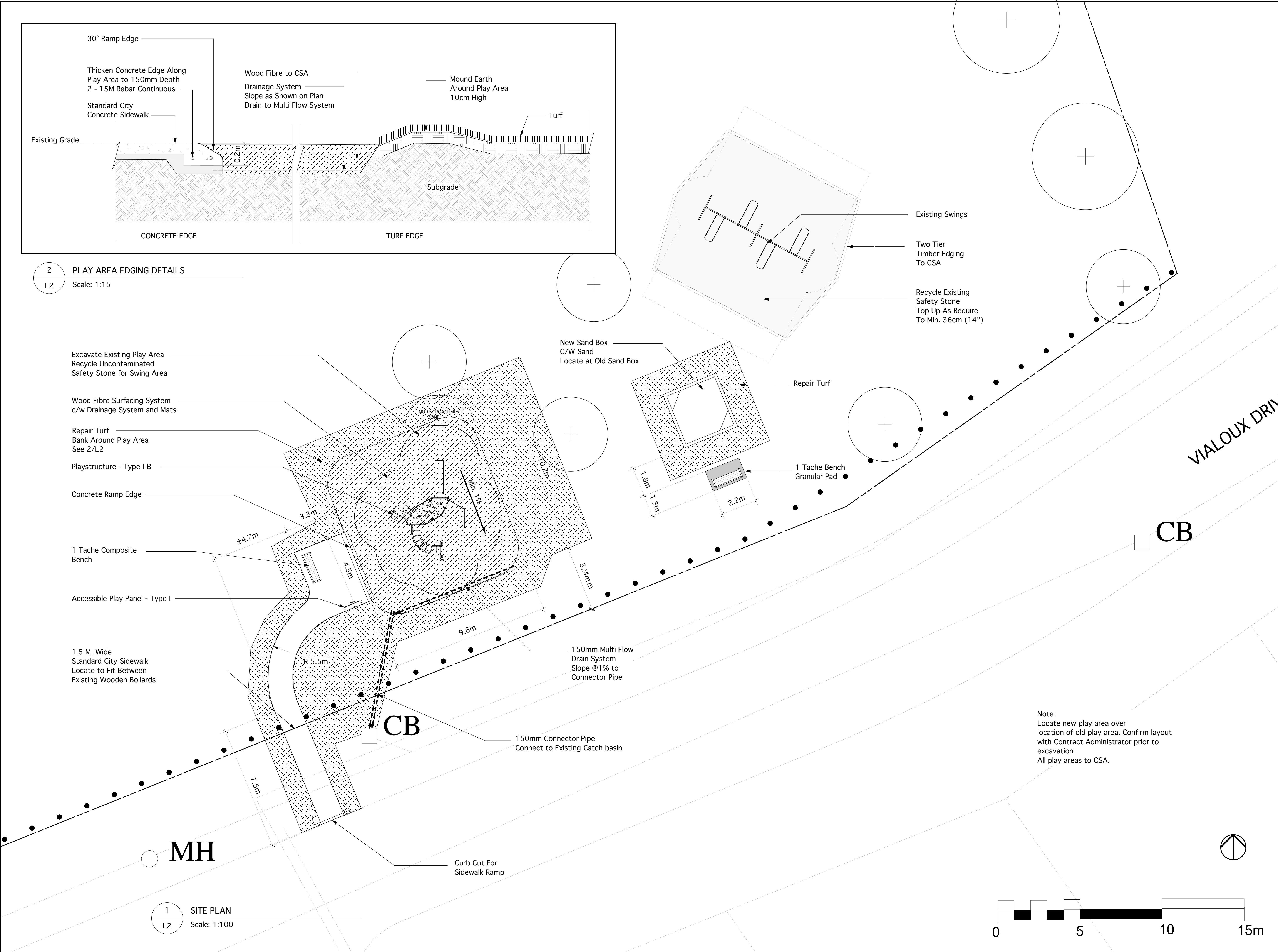


**PRELIMINARY
NOT FOR CONSTRUCTION**

NOTE:
 LOCATION OF UNDERGROUND STRUCTURES AS SHOWN ARE BASED ON THE BEST INFORMATION AVAILABLE BUT NO GUARANTEE IS GIVEN THAT ALL EXISTING UTILITIES ARE SHOWN OR THAT THE GIVEN LOCATIONS ARE EXACT. CONFIRMATION OF EXISTENCE AND EXACT LOCATION OF ALL SERVICES MUST BE OBTAINED FROM THE INDIVIDUAL UTILITIES BEFORE PROCEEDING WITH CONSTRUCTION.



2 PLAY AREA EDGING DETAILS
 Scale: 1:15



1 SITE PLAN
 Scale: 1:100



Note:
 Locate new play area over location of old play area. Confirm layout with Contract Administrator prior to excavation.
 All play areas to CSA.

Manager Parks and Open Space Division
 Released For Construction Date

DO NOT SCALE DRAWINGS

5		
4		
3		
2	99% Design Submission	01-08-07
1	66% Design Submission	13-07-07
0	33% Design Submission	29-05-07
revisions	description	date

SMITHDALE PARK
 3199 VIALOUX DRIVE
 WINNIPEG, MANITOBA

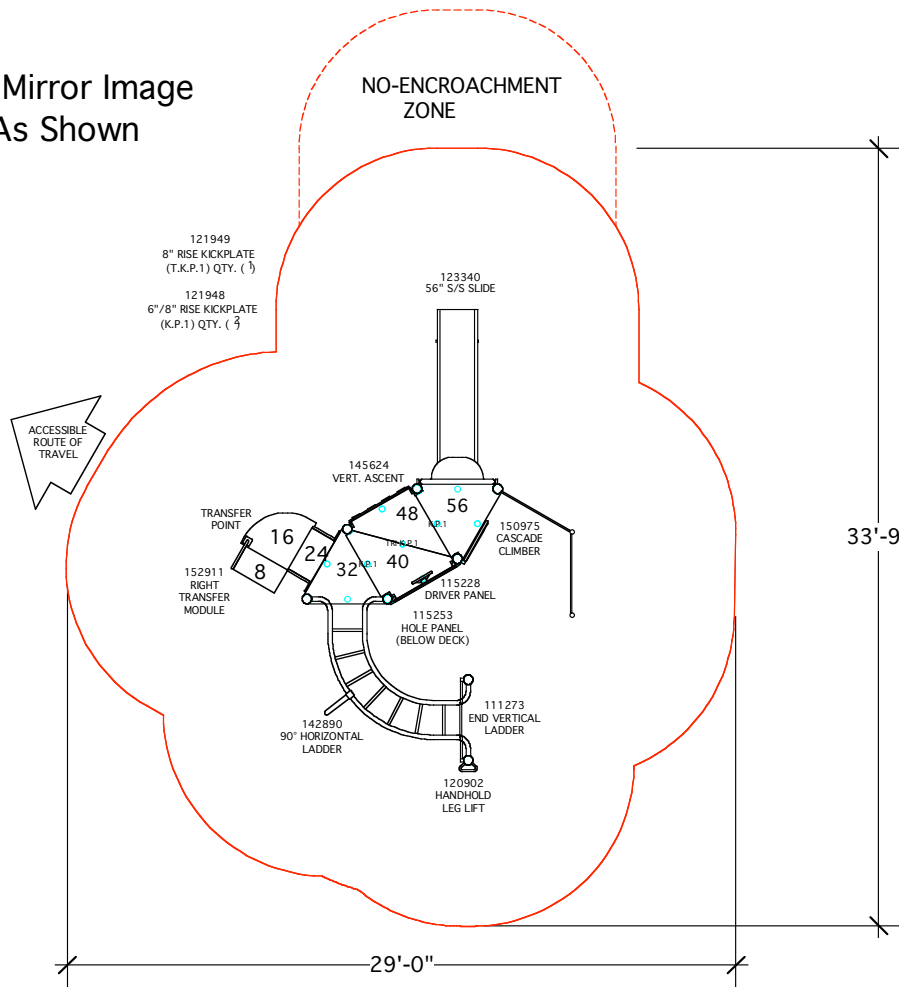
approved by		
designed by	LLW	scale 1:100
drawn by	LLW	date 01 08 2007



Playground Renovation

project no.	sheet	revision no.
0707-3	L2	0

Playstructure - Type I - A - Mirror Image
 Playstructure - Type I - B- As Shown



TOTAL ELEVATED PLAY COMPONENTS 5	0	REQUIRED	0
TOTAL ELEVATED COMPONENTS ACCESSIBLE BY RAMP	0	REQUIRED	3
TOTAL ELEVATED COMPONENTS ACCESSIBLE BY TRANSFER	5	REQUIRED	2
TOTAL ACCESSIBLE GROUND LEVEL COMPONENTS SHOWN	4	REQUIRED	2
TOTAL DIFFERENT TYPES OF GROUND LEVEL COMPONENTS	2	REQUIRED	2

NOTE: 7' USE ZONES

landscape structures

IREMA CERTIFIED

IT IS THE MANUFACTURER'S INTENT AND INTENTION OF THIS PLAN TO ADHERE TO THE COMMISSION'S REGULATIONS (CALIFORNIA CODE OF REGULATIONS TITLE 22, DIVISION 45, CHAPTER 22) AND THE ASSOCIATION'S REGULATIONS (ASTM F2206-14).

The play components identified on this plan are IREMA certified. The use and layout of these components conform to the Canadian Standard (CSA Z614-98) Standard CAN/CSA-Z614.

THE FALL HEIGHT OF THE SPACENET IS BASED ON THE CAN/CSA Z614-98 STANDARD SECTION 15.14.5.

THIS PLAY AREA & EQUIPMENT IS DESIGNED FOR AGES 2-12 YEARS

IT IS THE MANUFACTURER'S OPINION THAT THIS PLAY AREA CONFORMS TO THE CALIFORNIA CODE OF REGULATIONS (CALIFORNIA CODE OF REGULATIONS TITLE 22, DIVISION 45, CHAPTER 22) AND THE ASSOCIATION'S REGULATIONS (ASTM F2206-14) SURFACING IS PROVIDED, AS INDICATED, OR WITHIN THE ENTIRE USE ZONE.

THIS CONCEPTUAL PLAN WAS BASED ON INFORMATION AVAILABLE TO US. PRIOR TO CONSTRUCTION, DETAILED SITE INFORMATION INCLUDING SITE DIMENSIONS, TOPOGRAPHY EXISTING UTILITIES, SOIL CONDITIONS, AND DRAINAGE SOLUTIONS SHOULD BE OBTAINED, EVALUATED, & UTILIZED IN THE FINAL DESIGN.

PLEASE VERIFY ALL DIMENSIONS OF PLAY AREA, SIZE, ORIENTATION, AND LOCATION OF ALL EXISTING UTILITIES, EQUIPMENT, AND SITE FURNISHINGS PRIOR TO ORDERING.

SLIDES SHOULD NOT FACE THE HOT AFTERNOON SUN.

CHOOSE A PROTECTIVE SURFACING MATERIAL THAT HAS A CRITICAL HEIGHT VALUE OF AT LEAST THE HEIGHT OF THE HIGHEST ACCESSIBLE PART/FALL HEIGHT OF THE ADJACENT EQUIPMENT. (REF. CONSUMER PRODUCT SAFETY COMMISSION (CPSC) GUIDELINES, SECTION 10: SURFACING.)

AREA OF PROTECTIVE SURFACING SHALL BE A MINIMUM OF 10' x 10' @ 2" DEEP

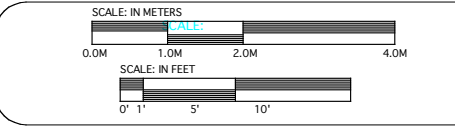
IT IS THE MANUFACTURER'S OPINION THAT THIS PLAYSTRUCTURE CONFORMS TO THE CALIFORNIA CODE OF REGULATIONS TITLE 22, DIVISION 45, CHAPTER 22.

IT IS THE MANUFACTURER'S OPINION AND INTENT THAT THE LAYOUT OF THESE COMPONENTS CONFORM WITH THE U.S. CONSUMER PRODUCT SAFETY COMMISSION'S (CPSC) "HANDBOOK FOR PUBLIC PLAYGROUND SAFETY".

DESIGNED BY:
GDW

COPYRIGHT: 7-31-07
LANDSCAPE STRUCTURES, INC.
601 7th STREET SOUTH - P.O. BOX 198
BELLEVUE, MINNESOTA 55328
PH: 1-800-328-0035 FAX: 1-763-972-6091

Date	Previous Drawing #	Initials



NORTH ARROW

Playstructure - Type I

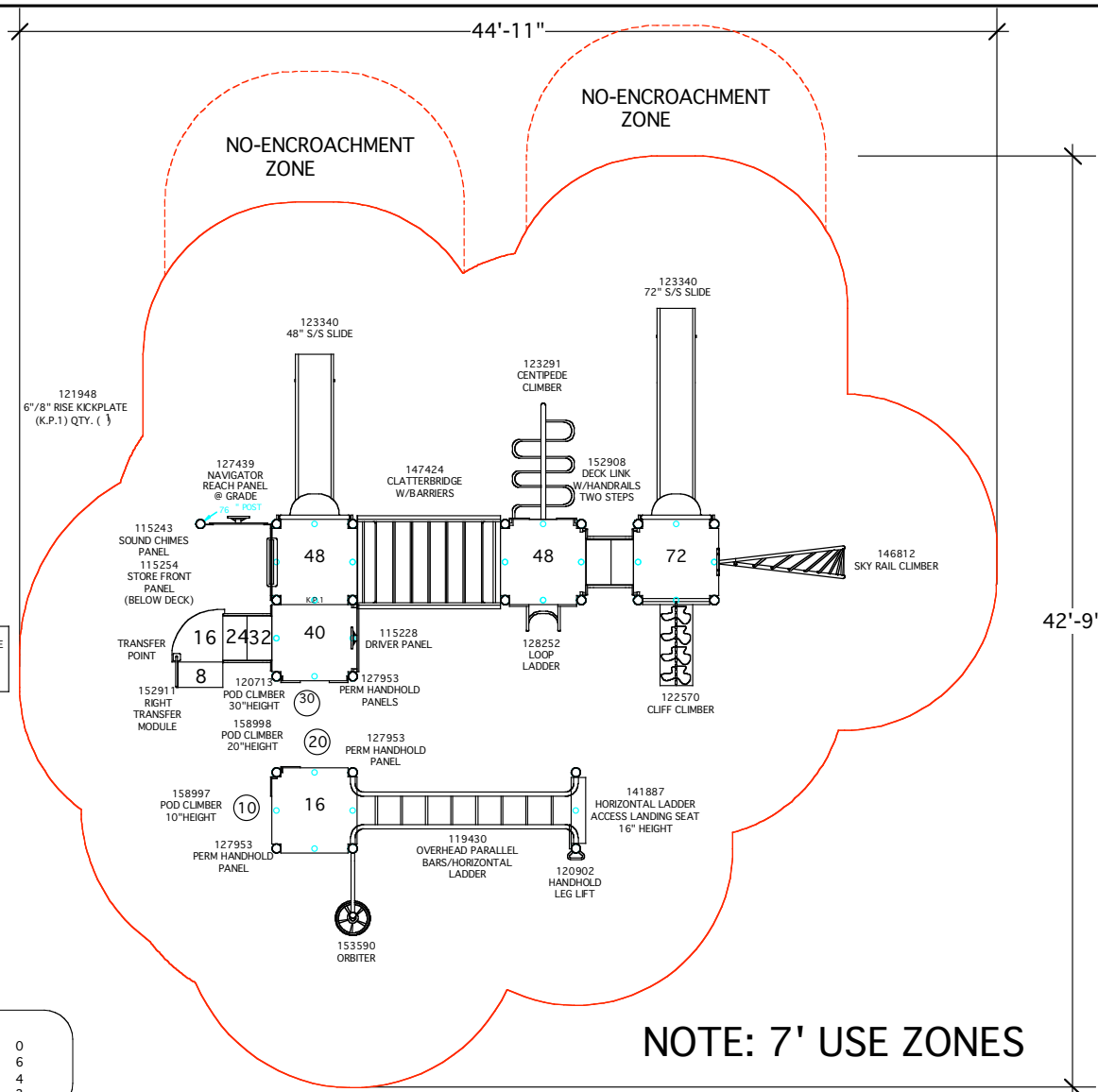
PLAYGROUND-R-US

JODI MARR

SYSTEM TYPE:
PLAYBOOSTER

DRAWING #:
19540-2-1





landscape structures

IRMA CERTIFIED

IT IS THE MANUFACTURER'S INTENTIONS THAT THE PLAYCOMPONENTS IDENTIFIED ON THIS PLAN CONFORM TO THE CAN/CSA Z614-98 STANDARD SECTION 15.14.5.

THIS PLAY AREA & EQUIPMENT IS DESIGNED FOR AGES 2-12 YEARS

IT IS THE MANUFACTURER'S OPINION THAT THIS PLAY AREA CONFORMS TO THE CALIFORNIA CODE OF REGULATIONS TITLE 22, DIVISION 45, CHAPTER 22.

IT IS THE MANUFACTURER'S OPINION AND INTENT THAT THE LAYOUT OF THESE COMPONENTS CONFORM WITH THE U.S. CONSUMER PRODUCT SAFETY COMMISSION'S (CPSC) "HANDBOOK FOR PUBLIC PLAYGROUND SAFETY".

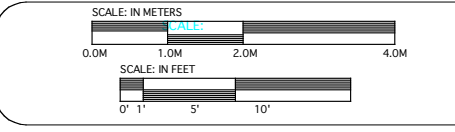
DESIGNED BY:
GDW

COPYRIGHT: 7-31-07
LANDSCAPE STRUCTURES, INC.
601 7th STREET SOUTH - P.O. BOX 198
BOLAND, MINNESOTA 55328
PH: 1-800-328-0035 FAX: 1-763-972-6091

Date	Previous Drawing #	Initials

TOTAL ELEVATED PLAY COMPONENTS	12	0	REQUIRED	0
TOTAL ELEVATED COMPONENTS ACCESSIBLE BY RAMP	0	0	REQUIRED	0
TOTAL ELEVATED COMPONENTS ACCESSIBLE BY TRANSFER	9	6	REQUIRED	6
TOTAL ACCESSIBLE GROUND LEVEL COMPONENTS SHOWN	4	4	REQUIRED	4
TOTAL DIFFERENT TYPES OF GROUND LEVEL COMPONENTS	4	3	REQUIRED	3

NOTE: 7' USE ZONES



Playstructure - Type II

PLAYGROUND-R-US

JODI MARR

SYSTEM TYPE:
PLAYBOOSTER

DRAWING #:
19540-3-1



MATERIALS

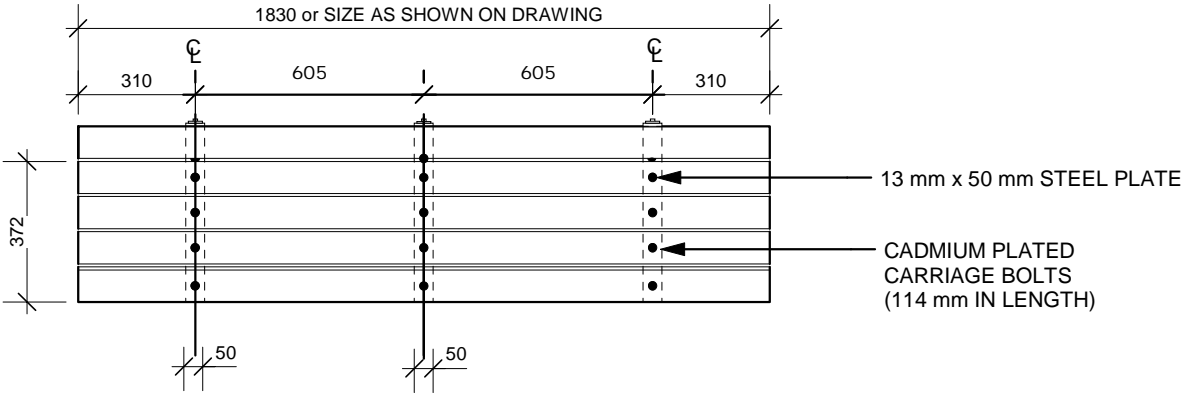
- 100 mm x 100 mm COMPOSITE BOARDS
- CEDAR TONE FINISH
- METAL FINISH - PRIME WITH RUSTOLEUM NO. 769
- FINISH WITH SAPOLIN
- BLACK WROUGHT FINISH

TITLE

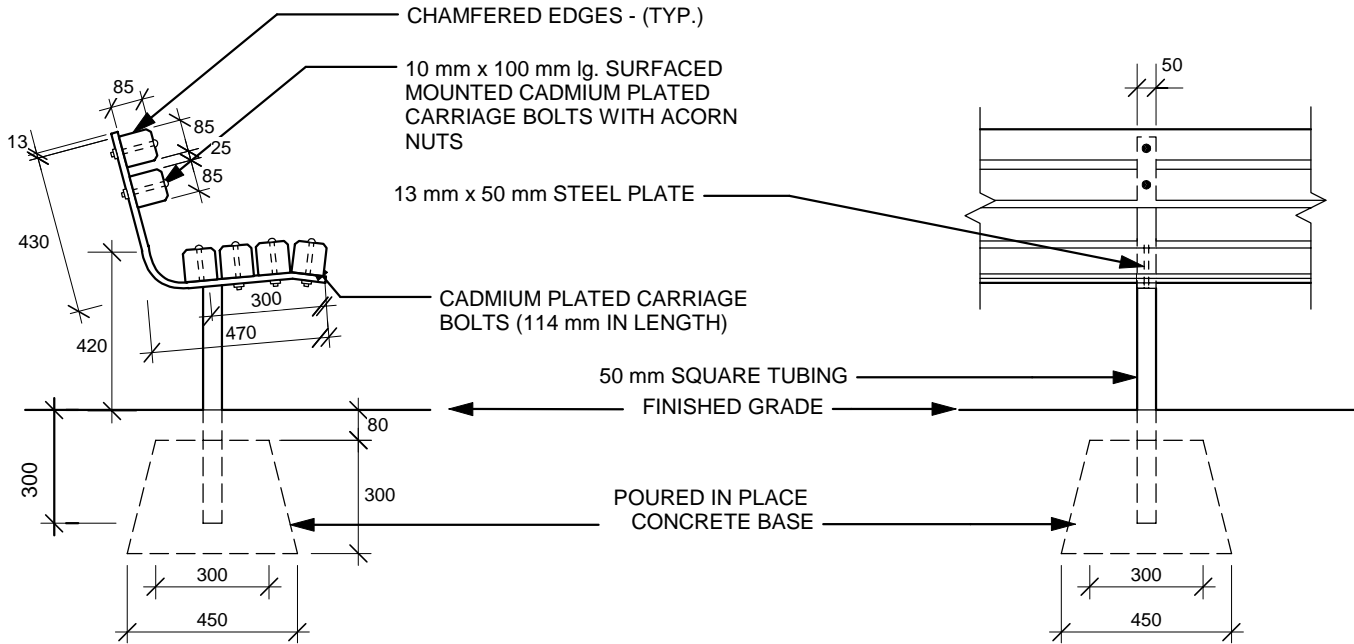
TACHE BENCH - COMPOSITE

D

SCD-120_A



PLAN VIEW



SIDE ELEVATION

FRONT ELEVATION

NOTE: ALL DIMENSIONS ARE IN MILLIMETERS
PRODUCT NO. 52501067

1:20

JUNE/06

JF

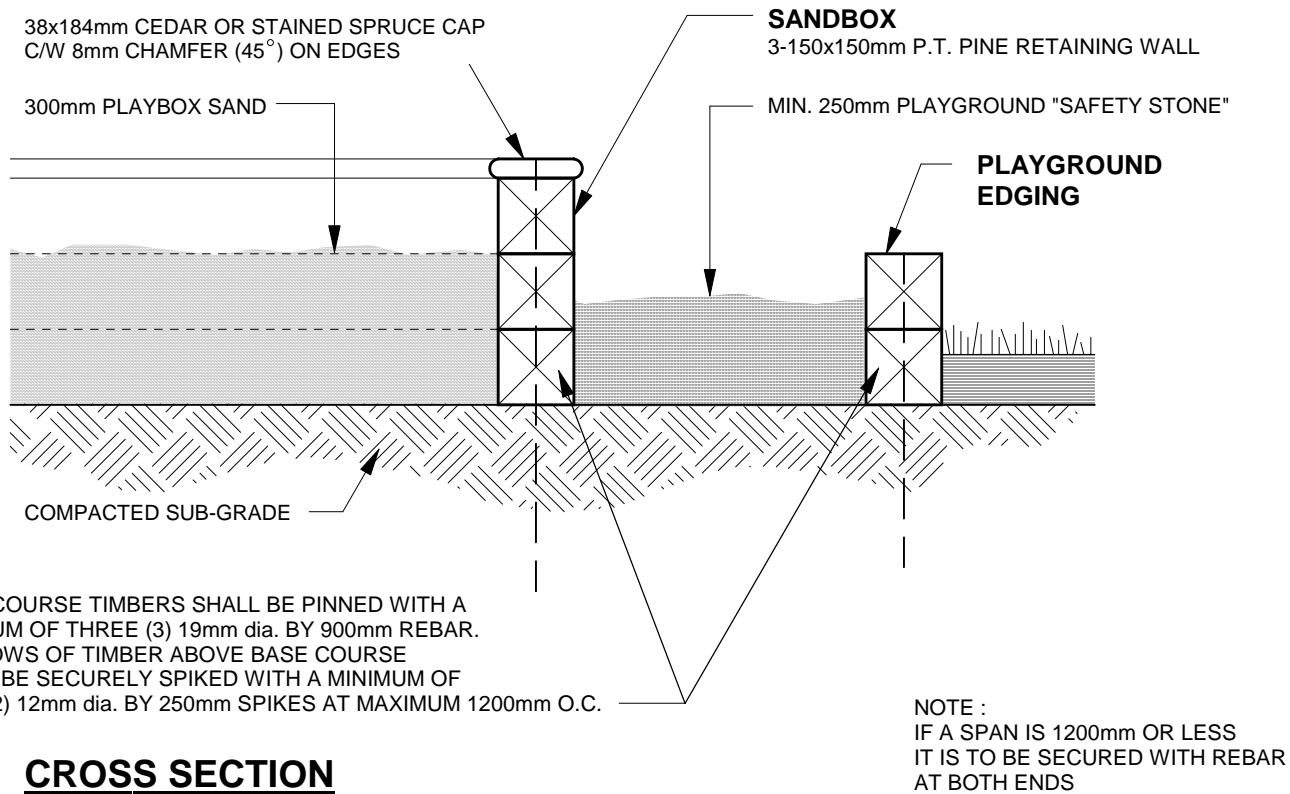
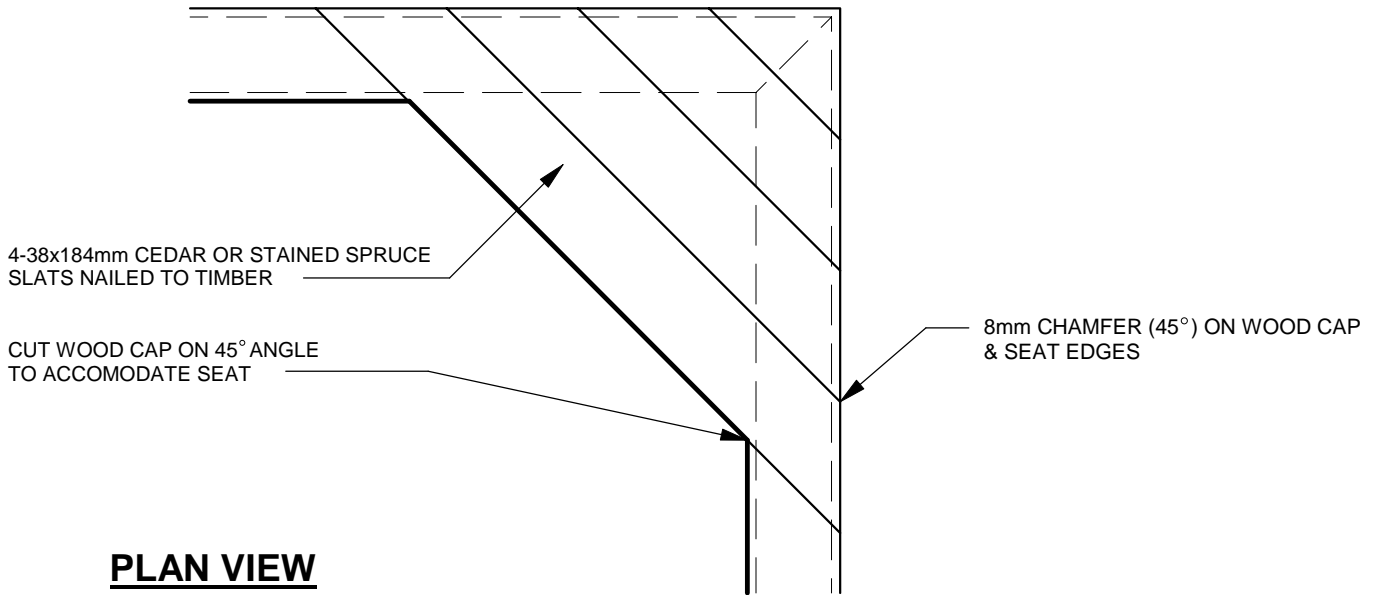
THE CITY OF WINNIPEG
Planning, Property and Development Department
Planning and Land Use Division
Unit 15 - 30 Fort Street, Winnipeg, MB, R3C 4X5



TITLE

SANDBOX AND WOOD SEAT DETAILS

SCD-247a



NOT TO SCALE

FEB/01

VC

THE CITY OF WINNIPEG
Planning, Property and Development Department
Planning and Land Use Division
Unit 15 - 10 Fort Street, Winnipeg, MB, R3C 4X5

