

DOOR SCHEDULE											
DOOR NO.	TYPE	WIDTH	HEIGHT	THICK.	M.T.L.	FRAME		RATING	NOTES		
						TYPE	FINISH				
DB01	B	3'-0" x 7'-0" x 1 3/4"			H.M.	P.T.	A	P.S.	P.T.	3/4 HR.	
DB02	D	3'-0" x 7'-0" x 1 3/4"			S.C.WD.	NAT.	A	P.S.	P.T.		
DB03	A	2'-3" x 6'-8" x 1 1/4"			M.S.	P.T.	D	S.WD.	NAT.		
DB04	A	3'-0" x 7'-0" x 1 3/4"			H.M.	P.T.	A	P.S.	P.T.	3/4 HR.	
DB05	D	3'-0" x 7'-0" x 1 3/4"			S.C.WD.	NAT.	A	P.S.	P.T.		
DB06	D	3'-0" x 7'-0" x 1 3/4"			S.C.WD.	NAT.	A	P.S.	P.T.		
DB07	D	3'-0" x 7'-0" x 1 3/4"			S.C.WD.	NAT.	A	P.S.	P.T.		SIGNAGE-SEE A4
DB08	D	3'-0" x 7'-0" x 1 3/4"			S.C.WD.	NAT.	A	P.S.	P.T.		SIGNAGE-SEE A4
DB09	D	3'-0" x 7'-0" x 1 3/4"			S.C.WD.	NAT.	A	P.S.	P.T.		SIGNAGE-SEE A4
DB10	F				AL.	A.M.B.	B	AL.	A.M.B.		THERMALLY BROKEN FRAME
DB11	A				H.M.	P.T.	A	P.S.	P.T.	3/4 HR.	
D100A											PROVIDED BY LIFT SUPPLIER
D100C											PROVIDED BY LIFT SUPPLIER
D101A	F				AL.	A.M.B.	B	AL.	A.M.B.		THERMALLY BROKEN FRAME
D101B	C				H.M.	P.T.	A	P.S.	P.T.	3/4 HR.	
D104	E				S.C.WD.	NAT.	A	P.S.	P.T.		
D105	D				S.C.WD.	NAT.	A	P.S.	P.T.		
D106	E				S.C.WD.	NAT.	A	P.S.	P.T.		
D108	D				S.C.WD.	NAT.	C	P.S.	P.T.		
D109	D				S.C.WD.	NAT.	A	P.S.	P.T.		SIGNAGE-SEE A4
D110	D				S.C.WD.	NAT.	A	P.S.	P.T.		SIGNAGE-SEE A4
D111A	B				H.M.	P.T.	A	P.S.	P.T.	3/4 HR.	
D111B	B				H.M.	P.T.	A	P.S.	P.T.		INSULATED DOOR & FRAME

DOOR HARDWARE CODES															
DOOR NUMBER	HINGES	CYLINDER LOCK	ELECTRIC STRIKE OPERATOR	SPRINGLOAD LEVER HANDLE	STORAGE LOCK	FRANCIS LOCK	FRUSH PLATE & PULL HANDLE	USH BAR & PULL HANDLE	CLOSER	FLOOR STOP	HICKLATES B/S	DOORSWEEP	SMOKE SEAL	WEATHERSTRIP	THRESHOLD
DB01	1B				2F					4A	5A	7A	8A		
DB02	1B									4A	5A				
DB03	1B									4A	5A	6A	7A	8A	
DB04	1B				2E					4A	5A	6A	7A	8A	
DB05	1B									4A	5A				
DB06	1B									4A	5A				
DB07	1B									4A	5A				
DB08	1B									4A	5A				
DB09	1B									4A	5A				
DB10	1B									4A	5A				
DB11	1B									4A	5A				
D100A	1A	2A	2B	2C						3B					BY DOOR SUPPLIER
D100C										3C					
D101A	1A	2A								3B	4A				BY DOOR SUPPLIER
D101B	1B		2B	2D	2F					3B					
D104	1B									5B					
D105	1B									5B					
D106	1B	2A								4A	5A				
D108	1B									5B					
D109	1B									2G					
D110	1B									2G					
D111A	1B									4A	5B	7A	8A		
D111B	1A	2A								4A				8A	10B

**HARDWARE CODES: (SEE NOTES)**

1A 1 1/2 PR. MCKINNEY TA 314 STEEL HINGES 4 1/2" x 4"

1B 1 1/2 PR. MCKINNEY TA 714 STEEL HINGES 4 1/2" x 4"

2A SCHLAGE -CYLINDER PRIMUS 20-710 INTERCHANGEABLE CORE 613 FINISH

2B ELECTRIC STRIKE HES 5000 x 501-LBM 630 ST. STEEL FINISH BARRIER FREE ADA ACTIVE SWITCH B/S GYRO TECH- AUTOMATIC DOOR OPERATOR GT 500 W/ RELAY 689

2C ALUMICOR -ADAMS RITE SPRINGLOAD LEVER HANDLE 7650 STANDARD BRONZE ANODIZED

2D ALUMICOR -ADAMS RITE SPRINGLOAD LEVER HANDLE 7651 CLEAR ANODIZED

2E SCHLAGE -STORAGE LOCK S80P F86

2F SCHLAGE ND-RH -PASSAGE SET 3410 W-626

2G SCHLAGE ND-RH-PRIVACY LOCK 3440 W-626

3A STANDARD METAL MFG. -PUSH PLATE & PULL HANDLE K11-A3 32D & 250S-2 32D

3B ALUMICOR -PUSH BAR & PULL HANDLE STD. BRONZE 9246 & 9228

3C RICHELIEU -DOOR PULL 54000-140 (INTERIOR LIFT SIDE ONLY)

4A LCN -CLOSER 1461 SERIES SLIM LINE COVER INCL. NON-HANDED

5A RICHELIEU -FLOOR STOP 471-175 (CONCRETE FLOORS)

5B RICHELIEU -FLOOR STOP 470-175 (WOOD FLOORS)

6A STANDARD METAL MFG. -KICKPLATES B/S K10A 12" x 34" 32D

7A K.N. CROWDER MFG. INC. -DOORSWEEP W13S 36" 689

8A K.N. CROWDER MFG. INC. -SMOKE SEAL W21 BLACK

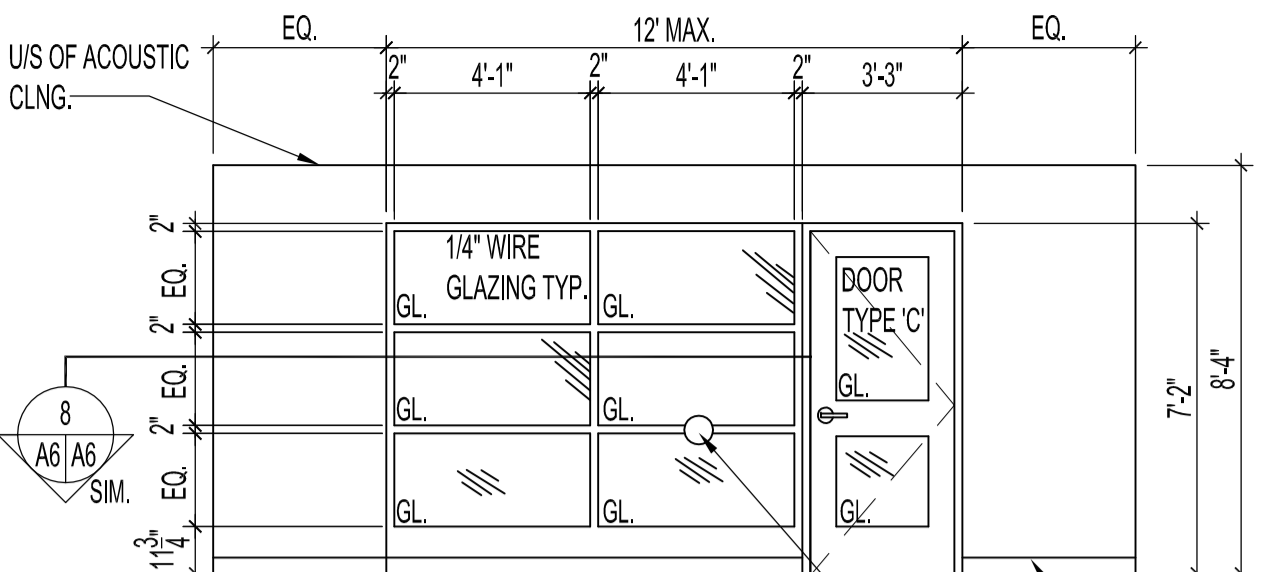
9A K.N. CROWDER MFG. INC. -WEATHERSTRIP W29 689

10A K.N. CROWDER MFG. INC. -THRESHOLD CT-32 689

10B K.N. CROWDER MFG. INC. -THRESHOLD CT-10 689

ROOM FINISH SCHEDULE											
ROOM NO.	ROOM NAME	FLOOR	BASEBOARD	NORTH WALL	SOUTH WALL	EAST WALL	WEST WALL	CEILING	HEIGHT	NOTES	
B-01	STARWAY	R.T.R.	4" R.B.B.	P.T.	P.T.	P.T.	P.T.	G.B.	8'-5" & 9'-0"		
B-02	OFFICE	CARPET	4" CARPET	P.T.	P.T.	P.T.	P.T.	G.B. & AC.	8'-5" & 9'-0"		
B-03	GENERAL OFFICE	CARPET	4" CARPET	P.T.	P.T.	P.T.	P.T.	G.B. & AC.	8'-5" & 9'-0"		
B-04	MECHANICAL ROOM	EXISTING						P.T.		CLEAN FLOOR FIRE RATING 1 HR.	
B-05	LOCKER ROOM	V.C.T.	4" R.B.B.	P.T.	P.T.	P.T.	P.T.	G.B.	8'-11"		
B-06	MENS SHOWER	2" C.T.	3" x 6" C.T.	3" x 6" C.T.	3" x 6" C.T.	3" x 6" C.T.	3" x 6" C.T.	P.T.	8'-6"	ALKYD SEMI-GLOSS PAINTED CEILING	
B-07	MENS WASHROOM	V.C.T.	4" R.B.B.	P.T.	P.T.	P.T.	P.T.	G.B.	8'-9"	PAINT EXISTING 4" STEEL COLUMN	
B-08	CORRIDOR	V.C.T.	4" R.B.B.	P.T.	P.T.	P.T.	P.T.	P.T.	10'-7"		
B-09	WOMENS WASHROOM	V.C.T.	4" R.B.B.	P.T.	P.T.	P.T.	P.T.	G.B.	8'-9"		
B-10	WOMENS SHOWER	2" C.T.	3" x 6" C.T.	3" x 6" C.T.	3" x 6" C.T.	3" x 6" C.T.	3" x 6" C.T.	P.T.	8'-6"	ALKYD SEMI-GLOSS PAINTED CEILING	
B-11	JANITOR	V.C.T.	4" R.B.B.	P.T.	P.T.	P.T.	P.T.	G.B.	8'-3" & 8'-9"	CLEAN FLOOR	
100	LIFT VESTIBULE	G.T.	6" G.T.	P.T.	P.T.	P.T.	P.T.	G.B.	7'-10" & 15'-0"		
101	VESTIBULE	V.C.T.	4" R.B.B.	P.T.	P.T.	P.T.	P.T.	P.T.	8'-4"		
102	WAITING	V.C.T.	6" R.B.B.	P.T.	P.T.	P.T.	P.T.	AC.T.	8'-4"		
103	GENERAL OFFICE #1	CARPET	4" CARPET	P.T.	P.T.	P.T.	P.T.	AC.T.	8'-4"		
104	LUNCH ROOM	V.C.T.	4" R.B.B.	P.T.	P.T.	P.T.	P.T.	AC.T.	8'-4"		
105	OFFICE	CARPET	4" CARPET	P.T.	P.T.	P.T.	P.T.	AC.T.	8'-4"		
106	GENERAL OFFICE #2	CARPET	4" CARPET	P.T.	P.T.	P.T.	P.T.	AC.T.	8'-4"		
107	STORAGE	CARPET	4" R.B.B.	P.T.	P.T.	P.T.	P.T.	CONCRETE	10'-8"	PAINT EXISTING SHELVING-SEE A2	
108	OFFICE	CARPET	4" CARPET	P.T.	P.T.	P.T.	P.T.	AC.T.	8'-4"		
109	STAFF WASHROOM	V.C.T.	4" R.B.B.	P.T.	P.T.	P.T.	P.T.	AC.T.	8'-4"		
110	PUBLIC WASHROOM	V.C.T.	4" R.B.B.	P.T.	P.T.	P.T.	P.T.	AC.T.	8'-4"		
111	STARWAY	R.T.R.	4" R.B.B.	P.T.	P.T.	P.T.	P.T.	G.B.	12'-4"		

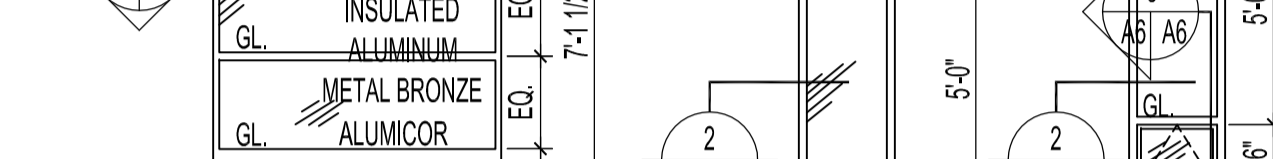
**ABBREVIATIONS** V.C.T.-VINYL COMPOSITE TILE R.T.R.-RUBBER TREADS & RISERS R.B.B.-RUBBER BASEBOARD(COLOUR-GREY) G.T.-QUARRY TILE  
 A.W.-ACQUA BOARD P.T.-PAINT  
 A.W.-ACOUSTICAL WALLCOVERING G.B.-GYPSUM BOARD AC.T.-ACOUSTIC TILE  
 2" C.T.-2" MOSAIC CERAMIC TILE 3" x 6" C.T.-3" x 6" CERAMIC TILE A.B.-AQUA BOARD



**WINDOW TYPE W1**  
 EQ. 12" MAX. EQ. 3'-3" EQ. 7'-2" 8'-4" 4" RUBBER BASE  
 ADA ACTIVE SWITCH B/S



**WINDOW TYPE W2**  
 ANODIZED INSULATED ALUMINUM METAL BRONZE ALUMICOR 3400 SERIES  
 A3/A6 SCALE: 1/4" = 1'-0"



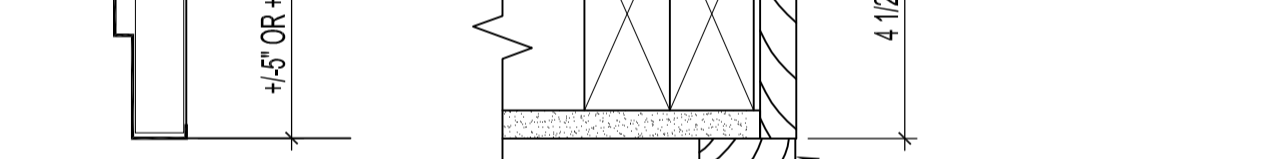
**WINDOW TYPE W3**  
 FIBERGLAS INSULATED FRAMES  
 W3 CASEMENT AWNING  
 A6/A6 SCALE: 1/2" = 1'-0"



**WINDOW TYPE W4**  
 INSULATED FIBERGLAS FRAMES  
 A6/A6 SCALE: 1/2" = 1'-0"



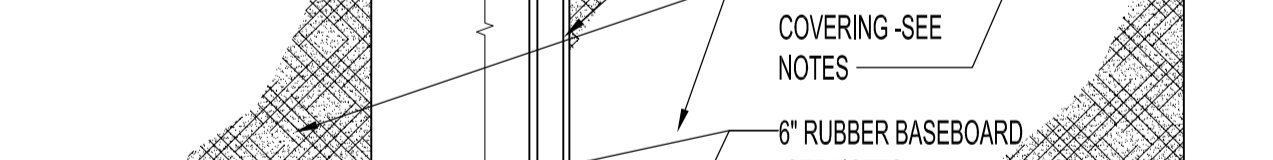
**JAMB DETAIL -ENTRANCE**  
 A6/A6 SCALE: 1 1/2" = 1'-0"



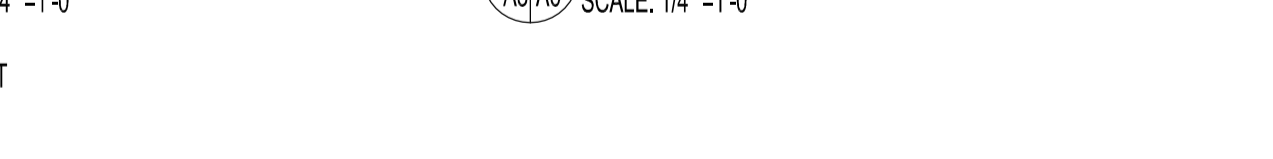
**JAMB DETAIL -LIFT VESTIBULE 100**  
 A6/A6 SCALE: 1 1/2" = 1'-0"



**JAMB /HEADER DETAIL**  
 A6/A6 SCALE: 3" = 1'-0"



**JAMB /HEADER DETAIL**  
 A6/A6 SCALE: 3" = 1'-0"



**ELEVATION -WAITING 102 (SOUTH)**  
 A3/A6 SCALE: 1/4" = 1'-0"



**ELEVATION -WAITING 102 (WEST)**  
 A3/A6 SCALE: 1/4" = 1'-0"



**WALL DETAIL**  
 A6/A6 SCALE: 1 1/2" = 1'-0"

**NOTES :**

ACOUSTICAL WALL COVERING: METRO WALL COVERING INC. -WHISPER TEX 3 HARVEST #60-49

CORNER GUARDS: JONHSONITE 1 1/8" CLEAR LEXAN W/ SELF-TAPING NAIL SCREW

**DOOR HARDWARE NOTES:**

1. ALL METAL FINISHES FOR HARDWARE & HANDLES TO BE JUPITER 626 UNLESS NOTED OTHERWISE.
2. ALL LOCKS TO BE SCHLAGE, INTERCHANGEABLE CORE D-SERIES EXTRA HEAVY DUTY COMMERCIAL UNLESS NOTED OTHERWISE.
3. HARDWARE BESIDES HINGES FOR DOOR DB103B SEE MILLWORK DRAWING.

SHOWERS B-06 & B-10 WALL FINISHES  
 OLYMPIC TILE YUKON GLOSSY GLAZED WALL TILE  
 "MUSTARD-Y-07" 3" x 6" RUNNING BOND

ORIGINAL STAMPED BY: R.K.FOK LI Arch.  
 DATE: 2007.11.15

SEE ADDENDUM 4 BID OPPORTUNITY 629-2007 MMK 2007.11.15  
 REVISED CEILING FINISH & HEIGHTS IN BASEMENT  
 REVISED ROOMS B-06, B-07, B-09, B-10  
 REVISED WALL, FLOOR & CLNG. FINISHES  
 IN SHOWERS B-06 & B-10  
 DELETED DOORS B-06A, B-06B, & B-10  
 CHANGED DOOR HARDWARE BRAND

SEE ADDENDUM 1 BID OPPORTUNITY 629-2007 RCP 2007.11.05  
 CHANGED ROOM FINISH SCHEDULE.

NO.	REVISION/DESCRIPTION	BY	DATE
1	SEE ADDENDUM 1 BID OPPORTUNITY 629-2007 RCP 2007.11.05 CHANGED ROOM FINISH SCHEDULE.		
2	SEE ADDENDUM 4 BID OPPORTUNITY 629-2007 MMK 2007.11.15 REVISED CEILING FINISH & HEIGHTS IN BASEMENT REVISED ROOMS B-06, B-07, B-09, B-10 REVISED WALL, FLOOR & CLNG. FINISHES IN SHOWERS B-06 & B-10 DELETED DOORS B-06A, B-06B, & B-10 CHANGED DOOR HARDWARE BRAND		

NO.	REVISION/DESCRIPTION	BY	DATE
10	TYP. EXISTING WINDOWS (TYP.)		
11	TYP. EXISTING WALLS (TYP.)		
12	TYP. EXISTING FLOORS (TYP.)		
13	TYP. EXISTING CEILING (TYP.)		
14	TYP. EXISTING BASEBOARD (TYP.)		

NO.	REVISION/DESCRIPTION	BY	DATE
10	TYP. EXISTING WINDOWS (TYP.)		
11	TYP. EXISTING WALLS (TYP.)		
12	TYP. EXISTING FLOORS (TYP.)		
13	TYP. EXISTING CEILING (TYP.)		
14	TYP. EXISTING BASEBOARD (TYP.)		

NO.	REVISION/DESCRIPTION	BY	DATE
10	TYP. EXISTING WINDOWS (TYP.)		
11	TYP. EXISTING WALLS (TYP.)		
12	TYP. EXISTING FLOORS (TYP.)		
13	TYP. EXISTING CEILING (TYP.)		
14	TYP. EXISTING BASEBOARD (TYP.)		

NO.	REVISION/DESCRIPTION	BY	DATE
10	TYP. EXISTING WINDOWS (TYP.)		
11	TYP. EXISTING WALLS (TYP.)		
12	TYP. EXISTING FLOORS (TYP.)		