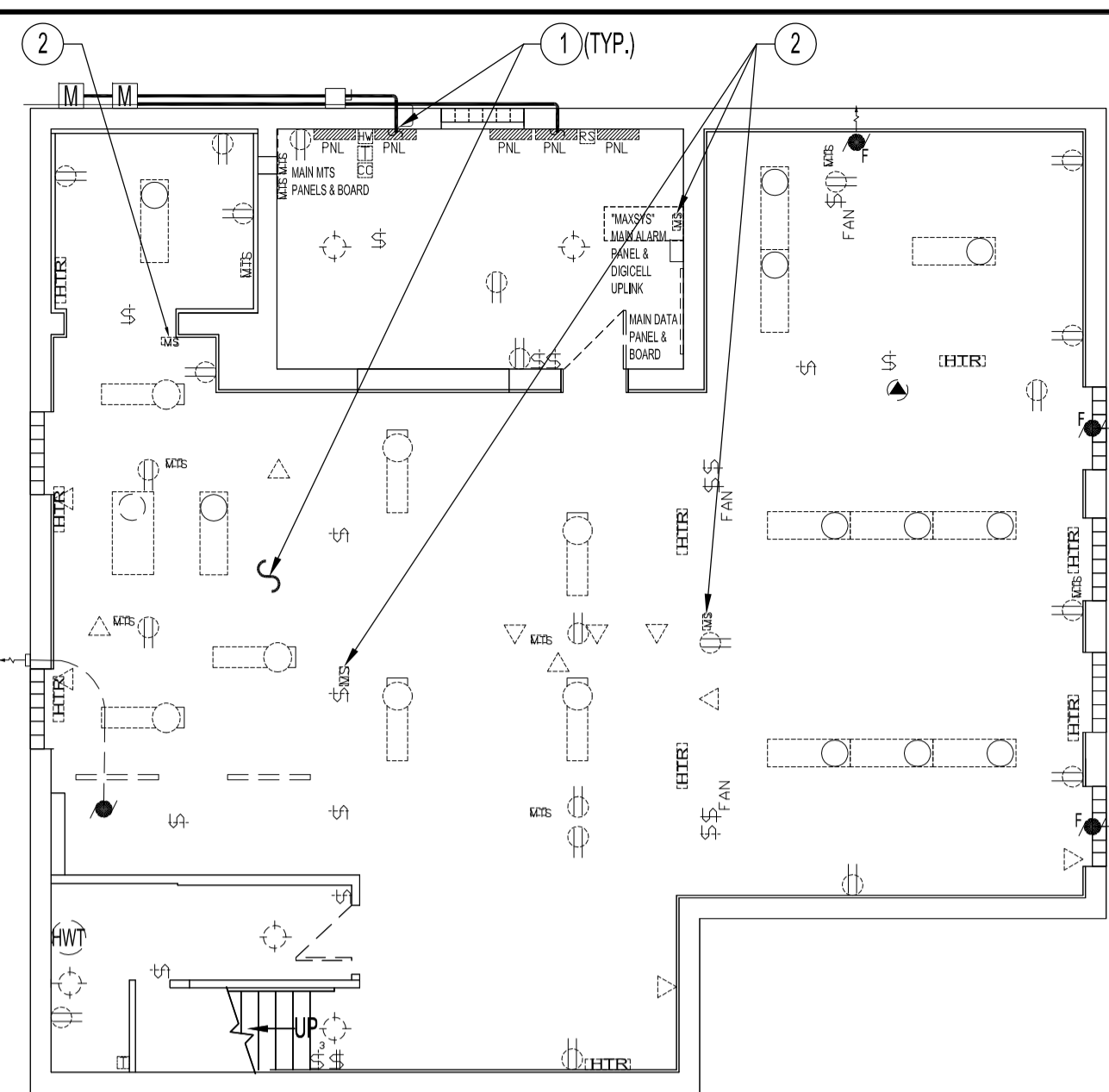


FILE NAME: 2004023EV2.dwg(E2R1) DATE: 2007.10.15 DESCRIPTION: BASEMENT FLOOR PLAN - ELECTRICAL DEMOLITION, RENOVATION, SCHEDULES & SCHEMATIC PROJECT No.: 2004-023 ADDRESS: 1400 HENDERSON HWY.



BASEMENT FLOOR PLAN - ELECTRICAL DEMOLITION SCALE: 1/8"=1'-0"

PANEL 'B' (BASEMENT)		BUS RATING 225A		MOUNTING: SURFACE	
DEMAND LOAD	CIRCUIT DESCRIPTION	CIRCUIT NO. 15A 1P (1/2" TANDEM BREAKERS) UNLESS OTHERWISE NOTED	CIRCUIT DESCRIPTION	CONCTD LOAD	DEMAND LOAD
	RECEP: GENERAL OFFICE B-03	1	LIGHTING: OFFICES: B-02, B-03		
	RECEP: OFFICES B-02 & B-03	3	LIGHTING: BASEMENT SOUTH, MECHANICAL RM.		
	SUMP PUMP	5	RECEP: OUTDOOR		
	RECEP: WASHRMS, JANITOR & HALLWAY	7	DOMESTIC HOT WATER TANK & RECIRC. PUMP		
	RECEP: B04, B03, & M06 CIVCO DETECTORS	9	SPARE		
	RECEP: EMERGENCY LIGHTING	11	SPARE		
	FURNACE AHU-1	13	FURNACE, AHU-2		
	HRV-2	15	HRV-1		
	AIR CONDITIONER AC-2 # 8 AWG	17	AIR CONDITIONER AC-1 # 8 AWG		
	SPARE	21	SPARE		
	SPARE	23	SPARE		
	SPARE	25	SPARE		
	SPACE	27	SPACE		
	SPACE	29	SPACE		
	SPACE	31	SPACE		
	SPACE	33	SPACE		
	SPACE	35	SPACE		
	SPACE	37	SPACE		
	SPACE	39	SPACE		

PANEL 'M' (MAIN FLOOR)		BUS RATING 225A		MOUNTING: RECESSED	
DEMAND LOAD	CIRCUIT DESCRIPTION	CIRCUIT NO. 15A 1P (1/2" TANDEM BREAKERS) UNLESS OTHERWISE NOTED	CIRCUIT DESCRIPTION	CONCTD LOAD	DEMAND LOAD
	LIFT	1	SIGN LIGHT		
	RECEP: STORAGE 107, OFFICE 108 & WAITING AREA 102	3	LIGHTING: WAITING AREA 102 & OFFICE 106		
	RECEP: WASHROOMS, WAITING AREA & VESTIBULE	5	LIGHTING: SOUTH		
	DOOR OPERATOR #1	7	LIGHTING: NORTH		
	DOOR OPERATOR #2	9	VESTIBULE HEATER		
	RECEP: GENERAL OFFICE 103	11	RECEP: WEST WALL OFFICE 106 & HOISTWAY PIT GFCI		
	RECEP: GENERAL OFFICE 103, & OFFICE 105	13	RECEP: KITCHEN MICROWAVE		
	RECEP: KITCHEN COUNTER	15	RECEP: KITCHEN FRIDGE		
	RECEP: KITCHEN	17	LIGHTING: EXTERIOR		
	LIGHTING: GENERAL OFFICE 103, LIFT VEST. & WAITING AREA	19	SPARE		
	SPARE	21	SPARE		
	SPARE	23	SPARE		
	SPARE	25	SPARE		
	SPARE	27	SPARE		
	SPACE	29	SPACE		
	SPACE	31	SPACE		
	SPACE	33	SPACE		
	SPACE	35	SPACE		
	SPACE	37	SPACE		
	SPACE	39	SPACE		

PANEL 'P' (EXISTING PARKING PANEL)		CIRCUIT NO. 15A 1P UNLESS OTHERWISE NOTED			
DEMAND LOAD	CIRCUIT DESCRIPTION	CIRCUIT NO. 15A 1P UNLESS OTHERWISE NOTED	CIRCUIT DESCRIPTION	CONCTD LOAD	DEMAND LOAD
	PARKING	1	PARKING		
	PARKING	2	PARKING		
	PARKING	3	PARKING		
	PARKING	4	PARKING		
	SPARE	5	SPARE		
	PARKING	6	SPACE		
	PARKING	7	SPACE		
	SPACE	8	SPACE		
		9			
		10			
		11			
		12			
		13			
		14			
		15			
		16			

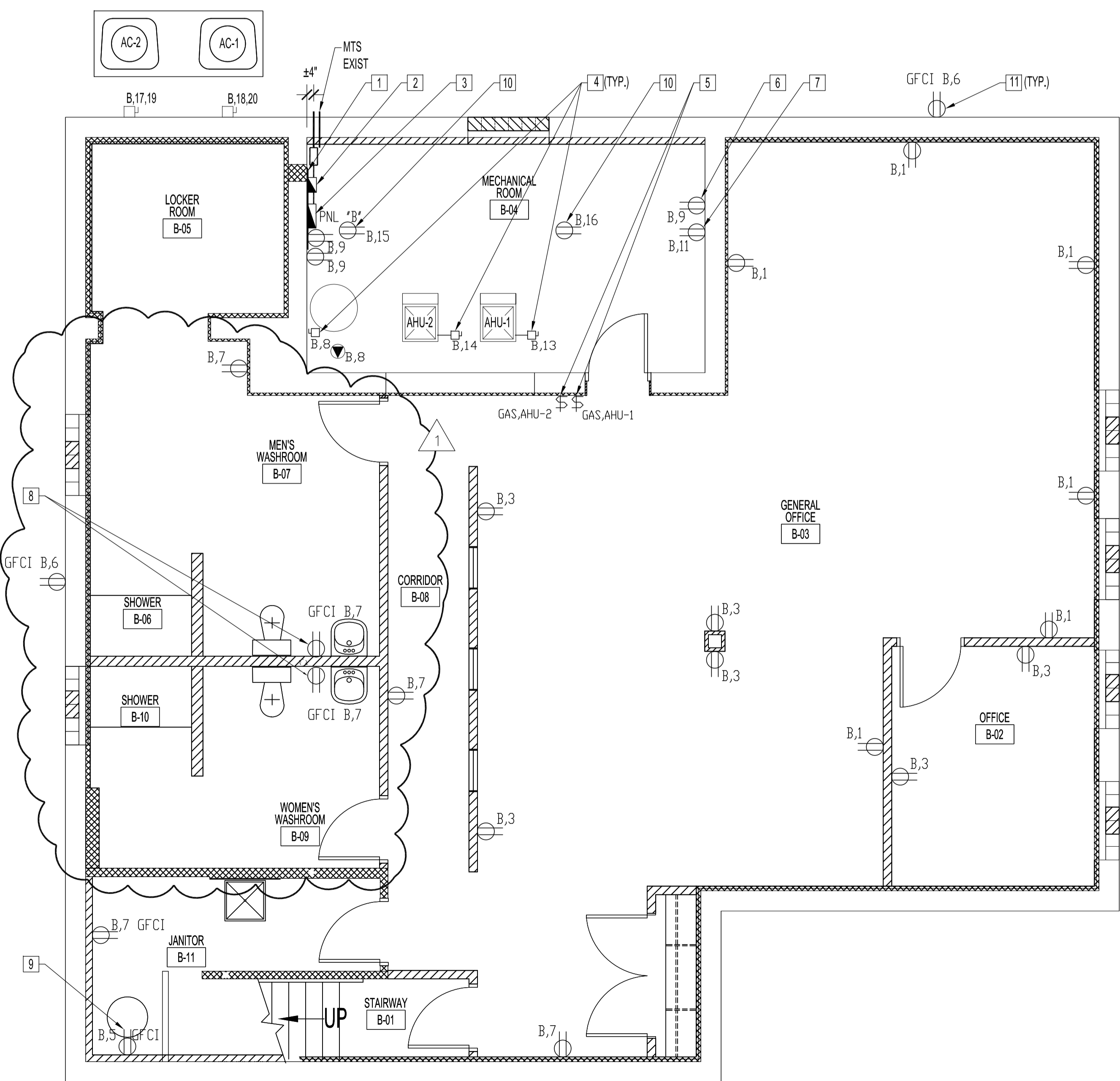
**ELECTRICAL DEMOLITION NOTES**

- INDICATES DEMOLITION. INCLUDES ELECTRICAL SYMBOLS.
- REMOVE AND DISCARD ALL ELECTRICAL COMPONENTS INCLUDING ALL PANELS, MAIN SWITCHES, RELAYS AND TIMERS FROM BASEMENT UNLESS OTHERWISE NOTED.
- DO NOT DISCONNECT EXISTING SECURITY SYSTEM COMPONENTS (MOTION SENSORS, DOOR CONTACTS ETC.) HANG LOOSE COMPONENTS ABOVE NEW CEILING SPACE TEMPORARY FOR REINSTALLATION BY OTHERS.

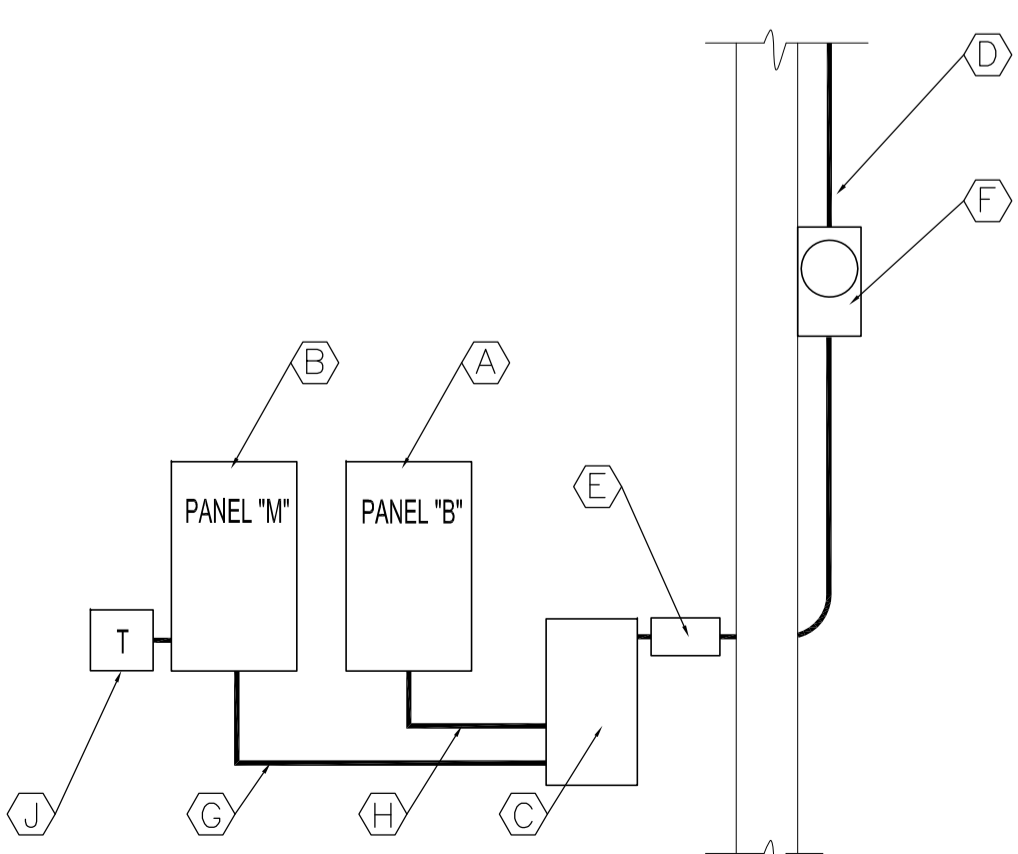
**ELECTRICAL RENOVATION NOTES**

- SUPPLY & INSTALL ELECTRICAL DISTRIBUTION EQUIPMENT BACKBOARD. SEE ARCH. DWG.
- SUPPLY & INSTALL SERVICE DISTRIBUTION, 200A, 120/240V, SINGLE PHASE SERVICE. SEE ELECTRICAL EQUIPMENT SCHEDULE.
- SUPPLY & INSTALL SURFACE MOUNTED PANEL "B". SEE ELECTRICAL EQUIPMENT SCHEDULE.
- SUPPLY & INSTALL POWER DISCONNECT SWITCHES FOR AHU1, AHU2, HOT WATER HEATER & RECIRCULATING PUMP.
- SUPPLY & INSTALL SWITCHES FOR GAS SHUT-OFF TO AHU-1 & AHU-2. MOUNT 6'-6" ABOVE FLOOR WITH RED COVER PLATES LABELLED AHU-1, AHU-2.
- SUPPLY & INSTALL (1) ISOLATED GROUND RECEPTACLE.
- SUPPLY & INSTALL EMERGENCY LIGHTING BATTERY PACK RECEPTACLE 6'-6" ABOVE FLOOR.
- SUPPLY & INSTALL WASHROOM GFCI RECEPTACLES AT 3'-8" ABOVE FLOOR.
- SUPPLY & INSTALL GFCI RECEPTACLE FOR SUMP PUMP.
- SUPPLY & INSTALL RECEPTACLES FOR HRV-1 & HRV-2. MOUNT RECEPTACLES ON CEILING.
- SUPPLY & INSTALL EXTERIOR GFCI RECEPTACLES C/W WEATHER PROOF COVERS. (TYP.)

**NOTES :**  
SEE NOTES ON DRAWING E1  
CIRCUITS NOTED AS SPARES TO HAVE CIRCUIT BREAKERS SUPPLY & INSTALL IN PANEL. SPACES TO HAVE BLANK COVERS.  
ALL BREAKERS TO BE 1/2" SLIMLINE BREAKERS TO SUIT PANEL.



BASEMENT FLOOR PLAN - ELECTRICAL RENOVATION SCALE: 1/4"=1'-0"



120/240V/1PH. 3 WIRE-200 AMP. DISTRIBUTION SCHEMATIC SCALE: N.T.S

**ELECTRICAL EQUIPMENT SCHEDULE**

A	<b>PANEL B:</b> CUTLER-HAMMER CAT. NO. CPM120, TYPE BR LOAD CENTER 225 AMP RATED, C/W 100 AMP 2 POLE MAIN BREAKER. PANEL TO BE SURFACE MOUNTED. THIS PANEL WILL ACCEPT 1" & 1/2" SNAP BREAKERS. SUPPLY AND INSTALL BREAKERS AS PER SCHEDULE. BREAKERS SHALL BE 1/2" SIZE UNLESS OTHERWISE NOTED.
B	<b>PANEL M:</b> CUTLER-HAMMER CAT. NO. CPM120, TYPE BR LOAD CENTER 225 AMP RATED, C/W 100 AMP 2 POLE MAIN BREAKER. PANEL TO BE RECESSED MOUNTED. THIS PANEL WILL ACCEPT 1" & 1/2" SNAP BREAKERS. SUPPLY AND INSTALL BREAKERS AS PER SCHEDULE. BREAKERS SHALL BE 1/2" SIZE UNLESS OTHERWISE NOTED.
C	<b>SERVICE ENTRANCE:</b> CUTLER-HAMMER; CAT. NO. 1HD224N HEAVY DUTY, FUSIBLE SINGLE THROW SERVICE ENTRANCE. TYPE 1 ENCLOSURE (INDOOR) FOR USE WITH 120/240V, 200A. SINGLE PHASE SERVICE. CSA APPROVED 100% LOAD MAKE / LOAD BREAK RATED. FUSES TO BE FERRAZ SHAWMUT, TR200R TIME DELAY FUSES.
D	<b>SERVICE MAST:</b> MICROELECTRIC SERVICE MAST COMPLETE WITH THE FOLLOWING ACCESSORIES: - 1-1/2" ENTRANCE CAP - HEAVY DUTY SPOOL RACK - 1/2" DIA. "U" BOLT MAST CLAMP - PIPE STRAP WITH TWO 3/8" X 4 1/2" LAG SCREWS - SUPPORT CLAMP C/W 5/8" X 4 1/2" FULLY THREADED BOLT AND 4"X4" SQUARE WASHER - 2" MAST ADAPTER AND REQUIRED REDUCER - METER SOCKET BRACKET - METER SOCKET MOUNTING BRACKET - SERVICE MAST GROUND CLAMP. WIRE RANGE 8-1/0 AWG
E	<b>TAP BOX:</b> JRS 200 AMP, 120/240V, 1 PHASE, 3W, WEATHERPROOF TAP BOX.
F	<b>METER SOCKET ENCLOSURE:</b> MICROELECTRIC CAT. NO. BS2-2V ENCLOSURE/METER SOCKET WEATHERPROOF TYPE 3R ENCLOSURE. 17" H X 12" W X 5 1/4" D FOR 120/240V, 200A, SINGLE PHASE SERVICE.
G	3C-#3 RW90 - COPPER IN 1 1/4" CONDUIT.
H	3C-#3 RW90 - COPPER IN 1 1/4" CONDUIT.
J	120V/24 HR. TIME CLOCK WITH 3-ON-OFF SETTINGS. WIRE TIMER TO CIRCUIT M, 2 - SIGN LIGHT.
GO-2	POWER DOOR OPERATOR, SEE DRAWING E3 ELECTRICAL RENOVATION NOTE.
	<b>HYDRAULIC VERTICAL PLATFORM LIFT: V1504-STD TYPE 90° SIDE ACCESS</b> - OPERATIONS: 115VAC OPERATION (115 VAC UP DIRECTION AND 12 VDC DOWN DIRECTION BATTERY POWERED). - POWER SUPPLY: 110 VOLT, 20 AMP, 1 PHASE, 60 HZ. - EMERGENCY: 12 VDC BATTERY LOWERING. - ELECTRICAL: AUTOMATIC BATTERY RECHARGING SYSTEM (115 VAC), LOW VOLTAGE CONTROLS, NORMAL LIMIT SWITCHES. - MOTOR/PUMP: 115VAC, 1.5HP (1.119kW) GEAR TYPE HYDRAULIC PUMP. - MANUAL LOWERING: REMOTE LOCATION EMERGENCY MANUAL LOWERING VALVE. - CAR ACCESS: COMBINATION MECHANICAL LOCK AND ELECTRIC STRIKES. - CONTROLLER: ELECTRONIC - FREE RELAY LOGIC.
HEATER	ELECTRIC HEATER: CADET, NLWC, 4500W, 240V/1/0, RECESSED TYPE C/W BUILT IN THERMOSTAT

ORIGINAL STAMPED BY: DOUG PALEY, P.ENG  
DATE: 2007.10.15

SEE ADDENDUM 3, BID OPPORTUNITY 629-2007 RCP 2007.11.15  
SEE DRAWING E4R1 FOR NEW LIGHTING LAYOUT

NO.	REVISION/DESCRIPTION	BY	DATE
1			

**DRAWN BY:** RCP **CHECKED BY:** USER APPROVAL **APPROVED:**

**CITY OF WINNIPEG**  
PLANNING, PROPERTY & DEVELOPMENT DEPARTMENT  
CIVIC ACCOMMODATIONS DIVISION  
300 - 65 GARRY ST. R3C 4K4

PROJECT: COMMUNITY POLICE SERVICE CENTRE

1400 HENDERSON HWY.

**SHEET TITLE**  
BASEMENT FLOOR PLAN  
ELECTRICAL  
DEMOLITION, RENOVATION, SCHEDULES & SCHEMATIC

**SCALE:** AS SHOWN **PROJECT NO.:** 2004-023 **SHEET NO.:** E2R1

DRAWING SHEET SIZE: A1 (841mm x 594mm) PLOT 1:1