

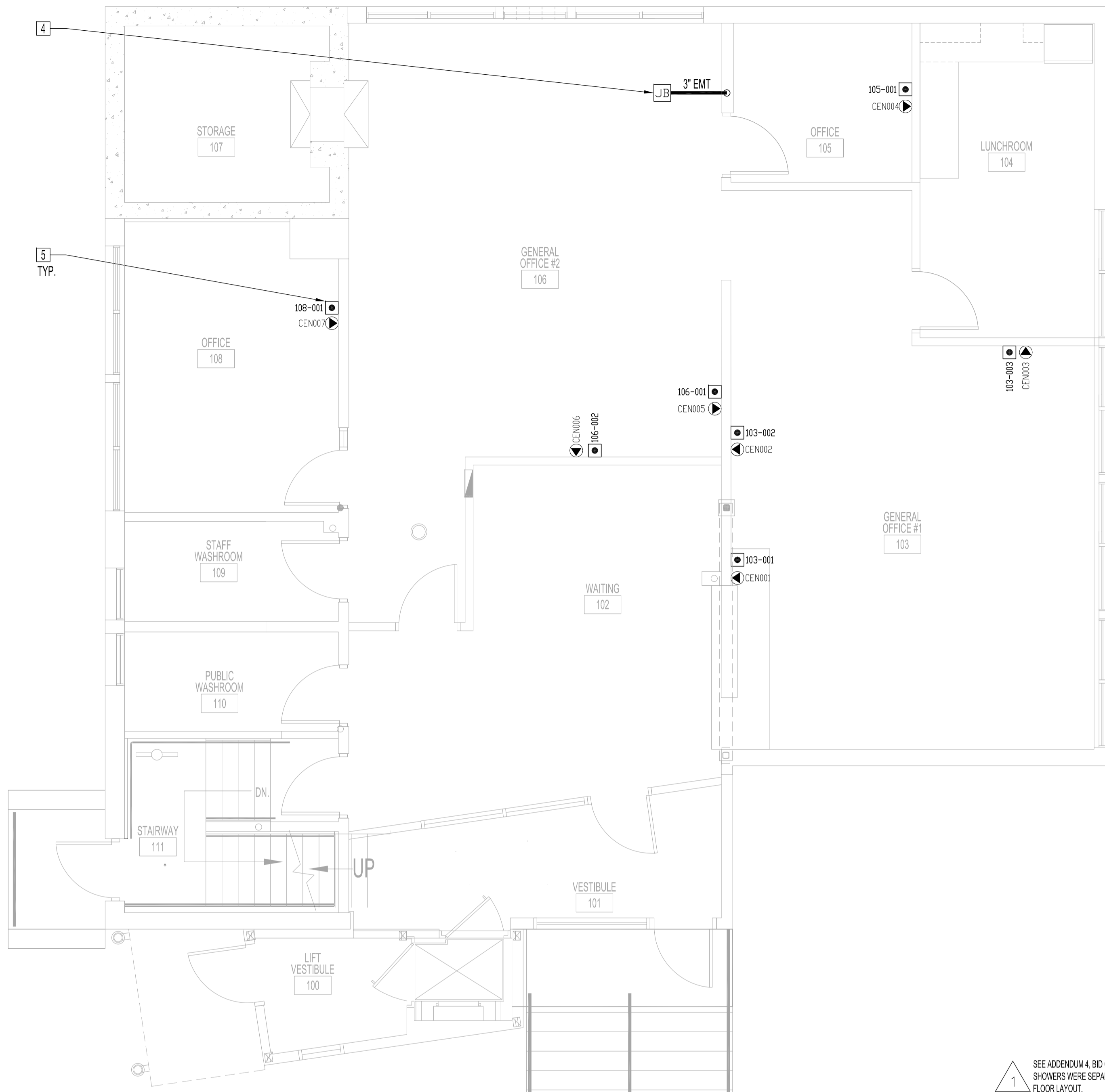
**BASEMENT FLOOR PLAN - DATA AND TELEPHONE**  
SCALE: 1/4"=1'-0"

LEGEND	
ITEM	DESCRIPTION (SUPPLIED & INSTALLED BY CONTRACTOR, UNLESS OTHERWISE SPECIFIED)
NB	NETWORK BOX 24"x24"x6" 16 GA. MIN. WITH KNOCKOUTS, PAINTED GALV. TO HOUSE 12-PORT SURFACE MOUNT PATCH PANEL BOX, HUBBELL MODEL SMB120W OR APPROVE EQUIV.
CAB1	SECTIONAL WALL MOUNT RACK, MIDDLE ATLANTIC [DWR12-22] WITH 28" OVERALL HEIGHT, 21" RACKING HEIGHT, 12 RACK SPACES, 200LBS CAPACITY. MOUNT 4" ABOVE FLOOR TO BOTTOM OF CABINET.
100-01	DATA DUPLEX WALL JACK (CAT-6), BLUE, WITH WHITE FACE PLATE. MOUNT SAME HEIGHT AS ELECTRICAL RECEPTACLES.
CEN00X	TELEPHONE - CENTREX SYSTEM. SUPPLY & INSTALL CAT-6 JACK (BLACK) IN SAME DEVICE BOX AS DATA AND FISH CORD TO ACCESSIBLE AREA ABOVE FINISH CEILING. MOUNT SAME HEIGHT AS ELECTRICAL RECEPTACLES. CABLING & TERMINATION TO BE INSTALLED BY MTS UNDER DIRECTIONS OF CTY OF WINNIPEG CORPORATE IT.
JB	JUNCTION BOX, 24"x24"x6"
TXXX	TELEPHONE - LOCAL (BY MTS)

**DATA AND PHONE RENOVATION NOTES**

SUPPLY & INSTALL, UNLESS OTHERWISE NOTED.  
SEE SPECIFICATIONS.  
ALL WIRING TO BE SECURED & ROUTED PARALLEL TO BUILDING STRUCTURE.  
ALL OPENINGS THROUGH FIRE ASSEMBLIES ARE TO BE FIRE STOPPED AND SEALED WITH ULC APPROVED FIRE STOPPING TO MAINTAIN THE INTEGRITY OF THE FIRE SEPARATION, AND PROVIDE A SMOKE-TIGHT BARRIER.

- INSTALL CAB1 ON DATA BACKBOARD.
- TERMINATE ALL DATA CABLING FROM WALL PORTS OR PATCH PANEL IN NB TO (1) 48-PORT CATEGORY 6 PATCH PANEL.
- TELEPHONE PORT LOCATION WHERE DATA PORT AND TELEPHONE PORT ARE SHOWN TOGETHER, A SINGLE DEVICE BOX TO HOUSE THE BOTH IS REQUIRED. A FISH CORD FOR THE TELEPHONE IS REQUIRED TO FACILITATE MTS TO PULL CABLE FROM CEILING SPACE INTO WALL DEVICE BOX.
- JUNCTION BOX MOUNTED UNDERSIDE OF ROOF JOIST ABOVE FINISH CEILING WITH 3" EMT ROUTED IN MAIN FLOOR WALL CAVITY TO MECHANICAL ROOM. ALL OPENINGS THROUGH FIRE ASSEMBLIES ARE TO BE FIRE STOPPED AND SEALED WITH ULC APPROVED FIRE STOPPING TO MAINTAIN THE INTEGRITY OF THE FIRE SEPARATION, AND PROVIDE A SMOKE-TIGHT BARRIER.
- ALL MAIN FLOOR DATA TO ROUTE TO JB USING J-HOOKS FASTENED RIGIDLY & PARALLEL TO BUILDING STRUCTURE



**MAIN FLOOR PLAN - DATA AND TELEPHONE**  
SCALE: 1/4"=1'-0"

NOTES :

1 SEE ADDENDUM 4, BID OPPORTUNITY 629-2007, WASHROOMS & SHOWERS WERE SEPARATED BY WALLS. CHANGED BASEMENT FLOOR LAYOUT. DTA 2007.11.15

NO.	REVISION/DESCRIPTION	BY	DATE

DRAWN BY	DATE	CHECKED BY	APPROVED
DTA	2007.10.10	USER APPROVAL	

**CITY OF WINNIPEG**  
PLANNING, PROPERTY & DEVELOPMENT DEPARTMENT  
CIVIC ACCOMMODATIONS DIVISION  
300 - 65 GARRY ST. R3C 4K4

PROJECT  
**COMMUNITY POLICE SERVICE CENTRE**

1400 HENDERSON HWY.  
SHEET TITLE  
**BASEMENT & MAIN FLOOR PLAN  
DATA AND TELEPHONE**

SCALE	PROJECT NO.	SHEET NO.
AS SHOWN	2004-023	T1R1