

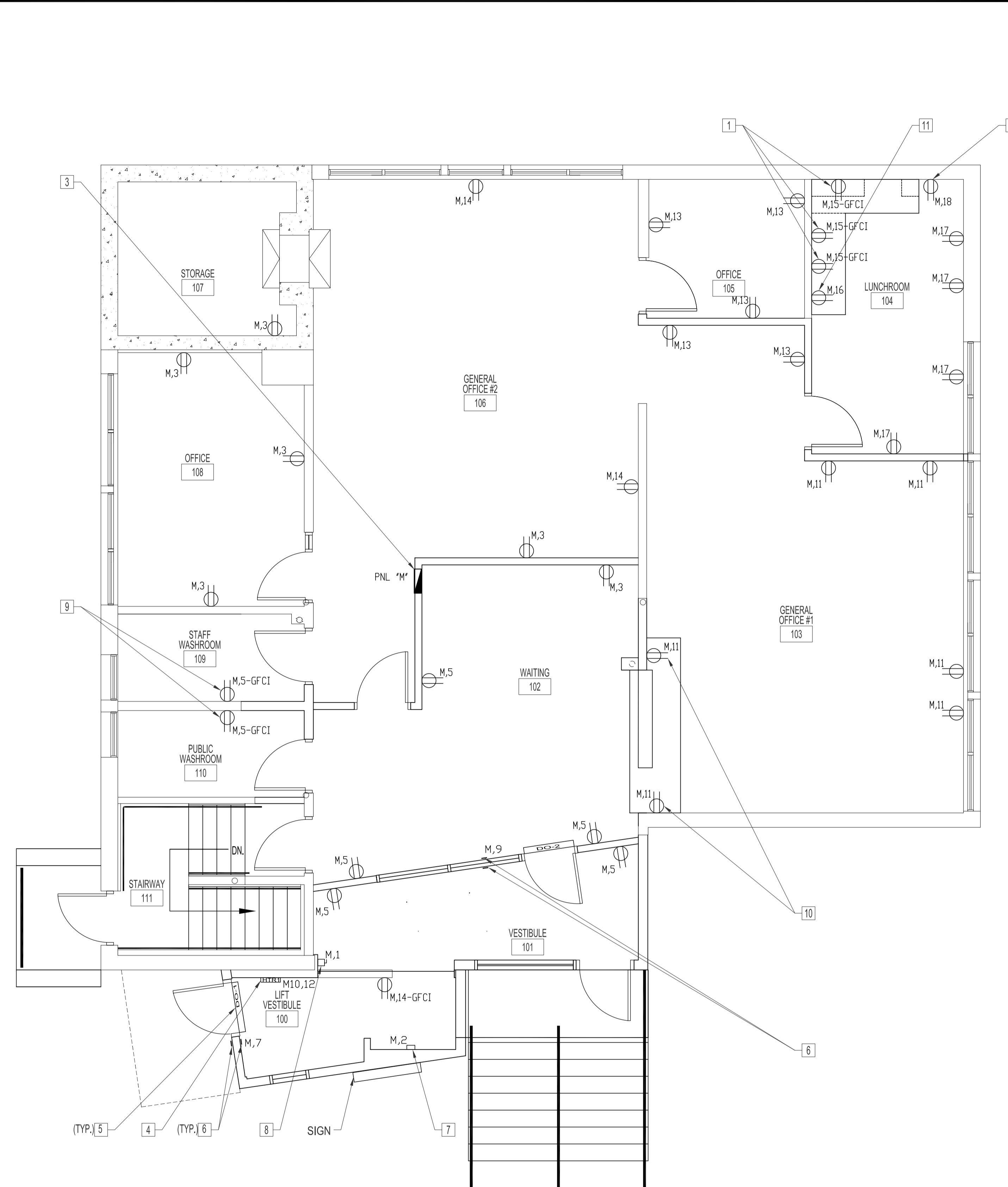
MAIN FLOOR PLAN - ELECTRICAL DEMOLITION
SCALE: 1/8"=1'-0"

ELECTRICAL DEMOLITION NOTES

- INDICATES DEMOLITION. INCLUDES ELECTRICAL SYMBOLS.
- 1 ALL ELECTRICAL COMPONENTS & WIRING TO BE REMOVED AND DISCARDED FROM ENTIRE MAIN FLOOR INCLUDING ELECTRICAL PANEL. (UNLESS OTHERWISE NOTED).
- 2 DO NOT DISCONNECT EXISTING SECURITY SYSTEM COMPONENTS (MOTION SENSORS, DOOR CONTACTS ETC.). HANG LOOSE COMPONENTS ABOVE NEW CEILING SPACE TEMPORARY FOR REINSTALLATION BY OTHERS.
- 3 REMOVE & DISCARD EXISTING WALL MOUNT LIGHT FIXTURE AND WIRING BACK TO SOURCE. EXISTING JUNCTION BOX TO REMAIN
- 4 REMOVE & DISCARD ELECTRICAL RECEPTACLE, CONDUIT AND WIRING BACK TO SOURCE.
- 5 REMOVE & DISCARD SIGN & ALL ELECTRICAL COMPONENTS BACK TO SOURCE.
- 6 REMOVE AND DISCARD EXISTING SOFFIT MOUNT RECEPTACLE AND LIGHT FIXTURE AND ALL ASSOCIATED WIRING BACK TO SOURCE.
- 7 REMOVE & DISCARD ALL PERIMETER WALL WIRING AND CONDUIT BACK TO SOURCE. EXISTING RECEPTACLE BOXES TO REMAIN IN WALLS (TYPICAL). FINISH WALLS AS PER ARCHITECTURAL DRAWING.

ELECTRICAL RENOVATION NOTES

- 1 SUPPLY & INSTALL ABOVE COUNTER G.F.C.I RECEPTACLES MOUNT AT 4 INCHES ABOVE BACKSPASH.
- 2 SUPPLY & INSTALL 110V RECEPTACLE FOR REFRIGERATOR.
- 3 SUPPLY & INSTALL RECESSED MOUNTED ELECTRICAL PANEL "M". SEE ELECTRICAL EQUIPMENT SCHEDULE.
- 4 SUPPLY & INSTALL ELECTRIC HEATER AS PER SCHEDULE.
- 5 SUPPLY & INSTALL A FULLY-FUNCTIONAL AUTOMATIC DOOR OPERATOR WITH POWER-ASSIST MODE ENABLED C/W 4 1/2" Ø PUSH PLATES, CONTROLLER AND HEADER. ELECTRICAL CABLE TO BE CONCEALED. POWER REQUIREMENT, 115V/60HZ/1PH.15A (DEDICATED CIRCUIT). SEQUENCE OF OPERATION FOR OCCUPIED MODE
1. UNLOCK DEADBOLT.
2. TURN ON/OFF SWITCH LOCATED ON HEADER TO "ON" POSITION.
3. OPERATOR TO OPEN FROM PUSH-PLATE, OR SLIGHT MOVEMENT OF THE DOOR.
SEQUENCE OF OPERATION FOR UNOCCUPIED-MODE
1. IF REQUIRED, TURN ON/OFF SWITCH LOCATED ON HEADER TO "OFF" POSITION.
2. LOCK DEADBOLT.
- 6 4 1/2" Ø PUSH PLATE ACTUATOR. LOCATED AS PER ARCHITECTURAL DWG. ON BOTH SIDES OF EACH WALL. SUPPLY AND INSTALL.
- 7 PROVIDE POWER & TIMER FOR EXTERIOR SURFACE MOUNT SIGN.
- 8 SUPPLY & INSTALL LOCKABLE FUSED CARTRIDGE TYPE DISCONNECT SWITCH WITH AUXILIARY CONTACT FOR BATTERY TO ISOLATE THE ELECTRIC CONTROLLER. PROVIDE TWO 18 AWG CONDUCTORS BETWEEN CONTACT & CONTROLLER.
- 9 SUPPLY GFCI RECEPTACLES 3'-8" ABOVE FLOOR.
- 10 SUPPLY AND INSTALL RECEPTACLES 6" ABOVE COUNTER.
- 11 SUPPLY AND INSTALL RECEPTACLE FOR MICROWAVE. INSTALL 6" ABOVE COUNTER.



MAIN FLOOR PLAN - ELECTRICAL RENOVATION
SCALE: 1/4"=1'-0"

ORIGINAL STAMPED BY: DOUG PALEY, P.ENG
DATE: 2007.10.15

| NO. | REVISION/DESCRIPTION | BY | DATE |
|-------|----------------------|----|------|
| SEALS | | | |

| DRAWN BY | CHECKED BY | APPROVED |
|----------|---------------|----------|
| RCP | USER APPROVAL | |

CITY OF WINNIPEG
PLANNING, PROPERTY & DEVELOPMENT DEPARTMENT
CIVIC ACCOMMODATIONS DIVISION
300 - 65 GARRY ST. R3C 4K4

PROJECT
COMMUNITY POLICE SERVICE CENTRE

1400 HENDERSON HWY.
SHEET TITLE
MAIN FLOOR PLAN
ELECTRICAL
DEMOLITION & RENOVATION

| SCALE | PROJECT NO. | SHEET NO. |
|----------|-------------|-----------|
| AS SHOWN | 2004-023 | E3 |