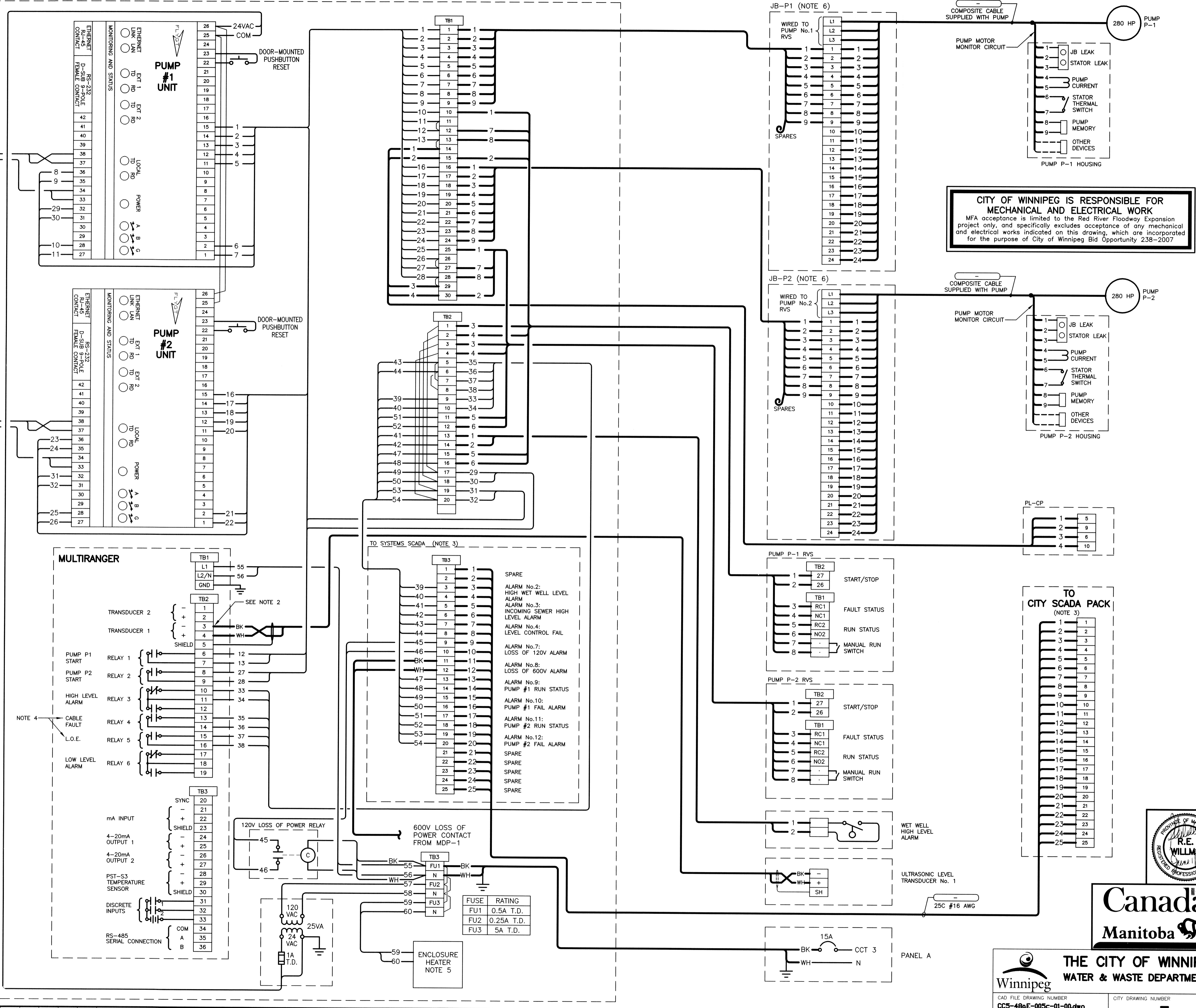


24x36"/[609x914]
 P:\Projects\2005\05-0107-17\Elect\Draws\CC5-48aE-005c-01-00.dwg - Jun 01, 2007 - 4:56pm - User:GNeilson

CONTROL PANEL



- LEGEND:**
- () CONDUCTOR IDENTIFICATION
 - STARTER TERMINALS
 - UC TERMINALS
 - DEVICE TERMINALS
 - UC UNIT CONTROLLER
 - L LOCAL OPERATOR CONTROLS
 - FIELD WIRING
 - PANEL WIRING
 - WIRE CONNECTION

- NOTES:**
- MOUNT THE FLYGT MAS UNITS BEHIND A VIEWPORT WITHIN THE ENCLOSURE SUCH THAT STATUS LIGHTS CAN BE SEEN WITHOUT OPENING ENCLOSURE.
 - WIRE DIRECTLY FROM TRANSDUCER INPUT TERMINALS TO TRANSDUCER HEAD WITH SIGNAL CABLE SUPPLIED WITH TRANSDUCER.
 - COORDINATE WITH CITY TO TERMINATE ALARMS IN CITY SUPPLIED SCADA CABINET.
 - RELAY 4 ON LEVEL TRANSMITTER SHALL BE CONFIGURED TO ALARM ON A TRANSDUCER CABLE FAULT, RELAY 5 SHALL BE CONFIGURED TO ALARM ON LOSS OF ECHO (LOE).
 - ENCLOSURE HEATER SHALL BE EQUIPPED WITH AN INTEGRAL THERMOSTAT AND SHALL MAINTAIN THE INTERNAL ENCLOSURE TEMPERATURE AT 10°C.
 - PROVIDE PROPER TERMINAL BLOCKS IN EACH JUNCTION BOX FOR THE CONTROL CABLING, AND LARGE LUGS FOR THE POWER DISTRIBUTION CABLING. CONTROL AREAS AND 600V AREA SHALL BE SEPARATED BY A METALLIC ISOLATION BARRIER.
 - DRAWING BASED ON FLYGT MAS711 PUMP MONITOR. DRAWING TO BE REVISED BY CONTRACTOR IF DIFFERENT UNIT PURCHASED.

CITY OF WINNIPEG IS RESPONSIBLE FOR MECHANICAL AND ELECTRICAL WORK
 MFA acceptance is limited to the Red River Floodway Expansion project only, and specifically excludes acceptance of any mechanical and electrical works indicated on this drawing, which are incorporated for the purpose of City of Winnipeg Bid Opportunity 238-2007

NO.	DATE	REVISIONS	BY	CHKD.	APP.
00	05/04/07	Issued for Tender and Construction By City of Winnipeg	GCN	DDW	REW
0C	05/04/07	Issued for Review to City of Winnipeg	GCN	DDW	REW
0B	04/07/06	Issued with Contract C5 as Reference Only	GCN	AP	REW
0A	09/06/06	ISSUED FOR REVIEW, 90% COMPLETE	GCN	AP	REW

KGS GROUP

SUBCONSULTANT DWG NO. _____

C of A _____ ENG. STAMP _____

APCGM
 Certificate of Authorization
KGS Group
 No. 245 Expiry: April 30, 2008

DESIGNED BY: AP	DRAWN BY: GCN	SCALE: AS NOTED
CHECKED BY: REW	APPROVED BY: REW	DATE: MAY, 2006

OWNER: **MANITOBA FLOODWAY AUTHORITY**

PROJECT: **RED RIVER FLOODWAY EXPANSION**

PHASE: **MAIN CHANNEL CONTRACT No C5**

TITLE: **KILDARE LAND DRAINAGE FLOOD PUMPING STATION ELECTRICAL WORKS CONTROL INDICATION AND ALARM SCHEMATICS AND WIRING DIAGRAM**



THE CITY OF WINNIPEG
 WATER & WASTE DEPARTMENT

CAD FILE DRAWING NUMBER: **CC5-48aE-005c-01-00.dwg**

CITY DRAWING NUMBER: _____

MFA acceptance:

DOUG McNEIL
 VICE PRESIDENT OF ENGINEERING AND CONSTRUCTION

OWNER DWG NO.: CC5-48aE-005c	SHT. 01	REV. 00
-------------------------------------	----------------	----------------