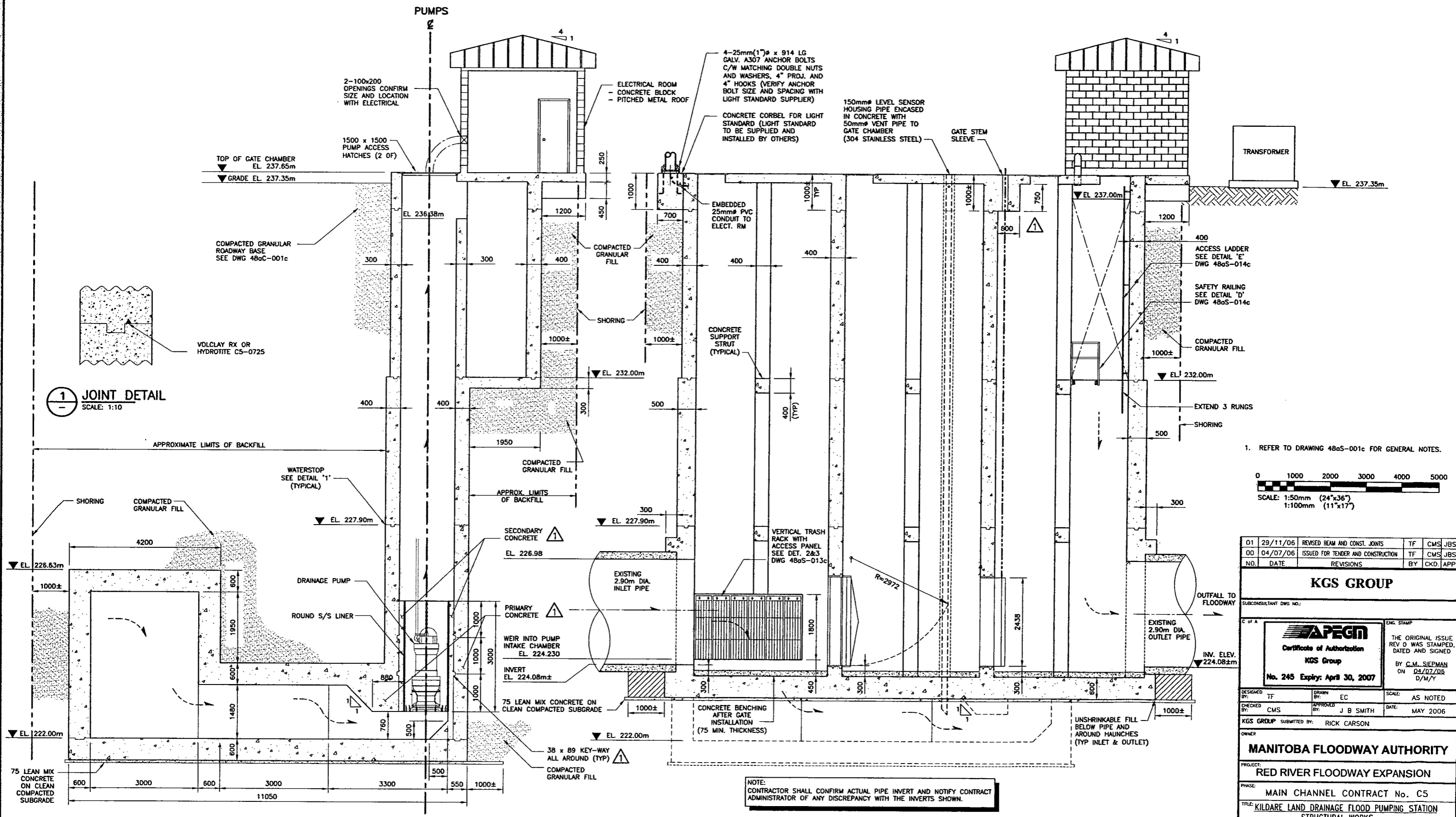


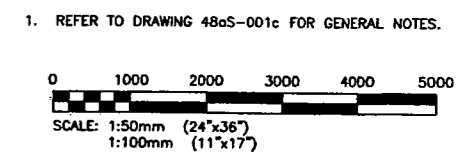
24"x36" (609x914) 2/13/05 1:1000 05-0107-17 Civil/Design/REVISION 01/CC5-48aS-003c-01-01.dwg - Tab. 3c - Apr. 05, 2007 - 3:53pm - User Name: jgritzinger



1 JOINT DETAIL
SCALE: 1:10

A SECTION
1c&2c SCALE: 1:50

B SECTION
1c&2c SCALE: 1:50



01	29/11/06	REVISED BEAM AND CONST. JOINTS	TF	CMS	JBS
00	04/07/06	ISSUED FOR TENDER AND CONSTRUCTION	TF	CMS	JBS
NO.	DATE	REVISIONS	BY	CHKD.	APP.

KGS GROUP

SUBCONSULTANT DWG NO.:

C of A

APEGM
Certificate of Authorization
KGS Group
No. 245 Expiry: April 30, 2007

ENG. STAMP
THE ORIGINAL ISSUE REV 0 WAS STAMPED, DATED AND SIGNED
BY: G.M. SEIPMAN
ON: 04/07/06
D/M/Y

DESIGNED BY:	TF	DRAWN BY:	EC	SCALE:	AS NOTED
CHECKED BY:	CMS	APPROVED BY:	J B SMITH	DATE:	MAY 2006
KGS GROUP SUBMITTED BY: RICK CARSON					

MANITOBA FLOODWAY AUTHORITY

PROJECT: RED RIVER FLOODWAY EXPANSION

PHASE: MAIN CHANNEL CONTRACT No. C5

TITLE: KILDARE LAND DRAINAGE FLOOD PUMPING STATION
STRUCTURAL WORKS
CONCRETE SECTIONS A AND B

RELEASED FOR CONSTRUCTION:

DOUG McNEIL
VICE PRESIDENT OF ENGINEERING AND CONSTRUCTION

OWNER DWG NO.: CC5-48aS-003c

SHT.	01	REV.	01
------	----	------	----

