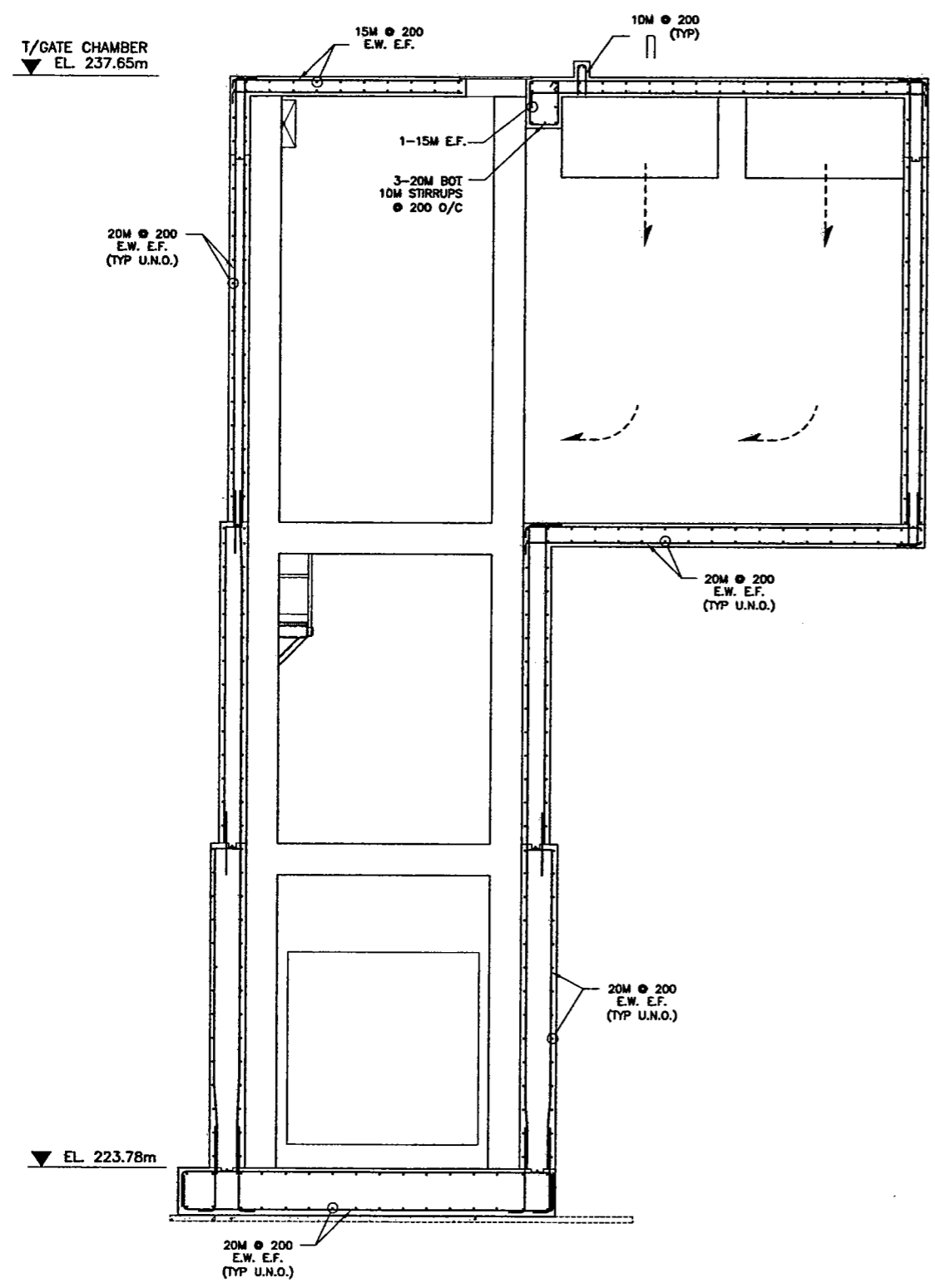
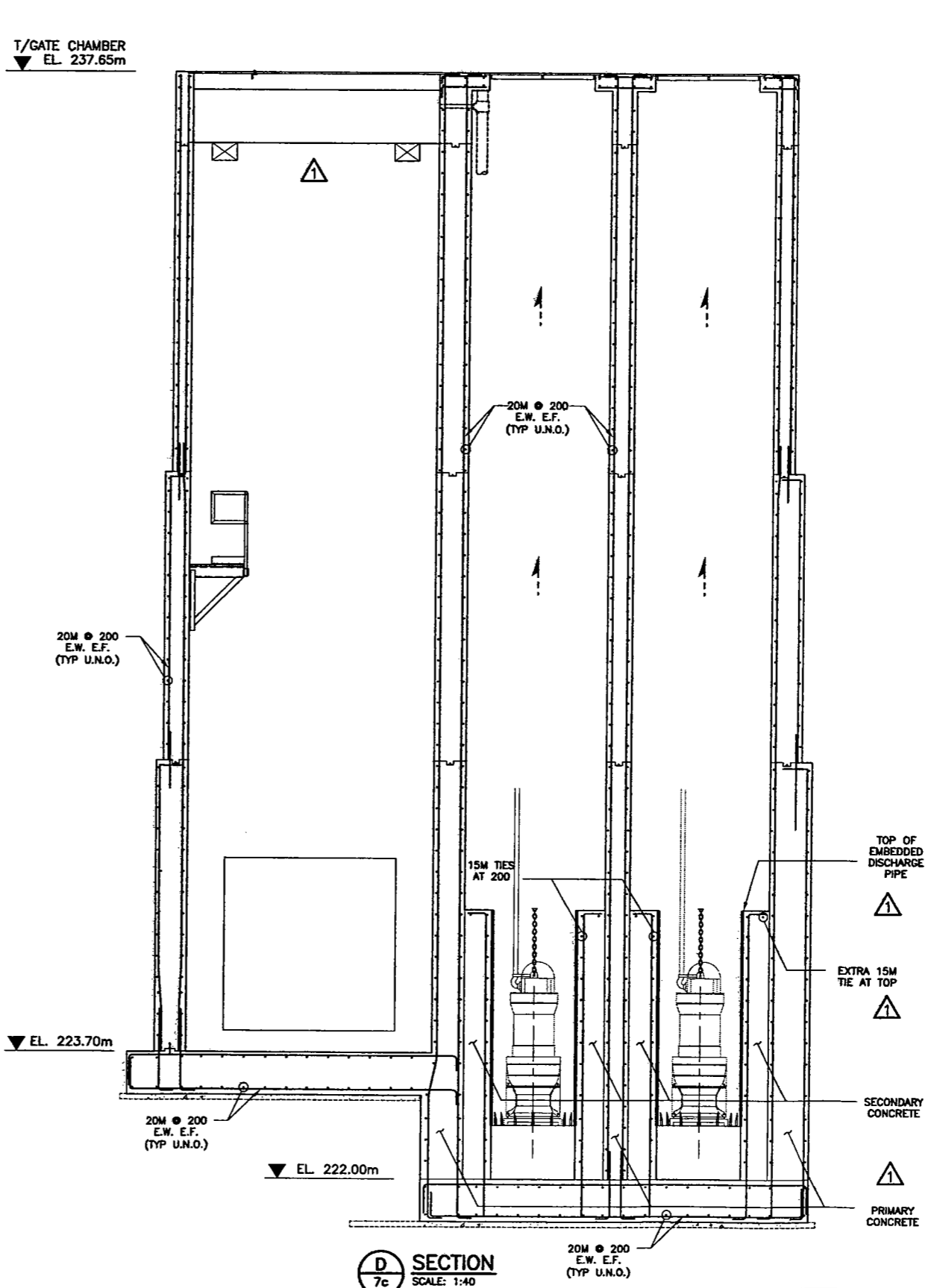


24"x36"/(600x914)
 S:\Projects\2005-05-0107-17\Civil\Drawings\REV\SECTION 01\CC5-48aS-010c-01-01.dwg - Tab 10c - Apr 05, 2007 - 3:52pm - User Name: jgritzinger

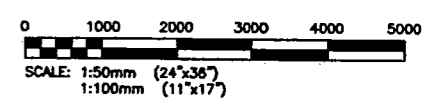


C SECTION
7c SCALE: 1:40



D SECTION
7c SCALE: 1:40

1. REFER TO DRAWING 48aS-001c FOR GENERAL NOTES.



NO.	DATE	REVISIONS	BY	CHKD./APP.
01	29/11/06	REVISED BEAM AND CONST. JOINTS	TF	CMS/JBS
00	04/07/06	ISSUED FOR TENDER AND CONSTRUCTION	TF	CMS/JBS

KGS GROUP

SUBCONSULTANT DWG NO.:

C of A

THE ORIGINAL ISSUE REV 0 WAS STAMPED, DATED AND SIGNED BY C.W. SIEPMAN ON 04/07/06 D/M/Y

DESIGNED BY: TF	DRAWN BY: EC	SCALE: AS NOTED
CHECKED BY: CMS	APPROVED BY: J B SMITH	DATE: MAY 2006

KGS GROUP SUBMITTED BY: RICK CARSON

OWNER: **MANITOBA FLOODWAY AUTHORITY**

PROJECT: **RED RIVER FLOODWAY EXPANSION**

PHASE: **MAIN CHANNEL CONTRACT No. C5**

TITLE: **KILDARE LAND DRAINAGE FLOOD PUMPING STATION STRUCTURAL WORKS REINFORCING SECTIONS C AND D**

RELEASED FOR CONSTRUCTION:



DOUG McNEIL VICE PRESIDENT OF ENGINEERING AND CONSTRUCTION	SHT. 01	REV. 01
OWNER DWG NO.: CC5-48aS-010c		