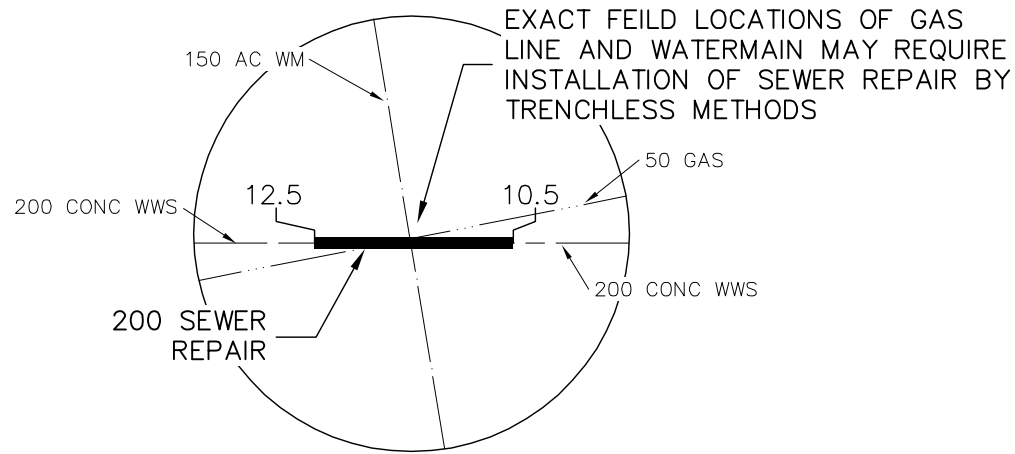


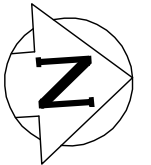
NOTES:

1. BACKFILL UNDER PAVEMENT, IN SIDEWALKS, & WITHIN 1.0 m OF PAVEMENT TO BE CLASS 3.
2. CONFIRM LIMITS OF REPAIR IN PRESENCE OF THE CONTRACT ADMINISTRATOR BY CCTV.

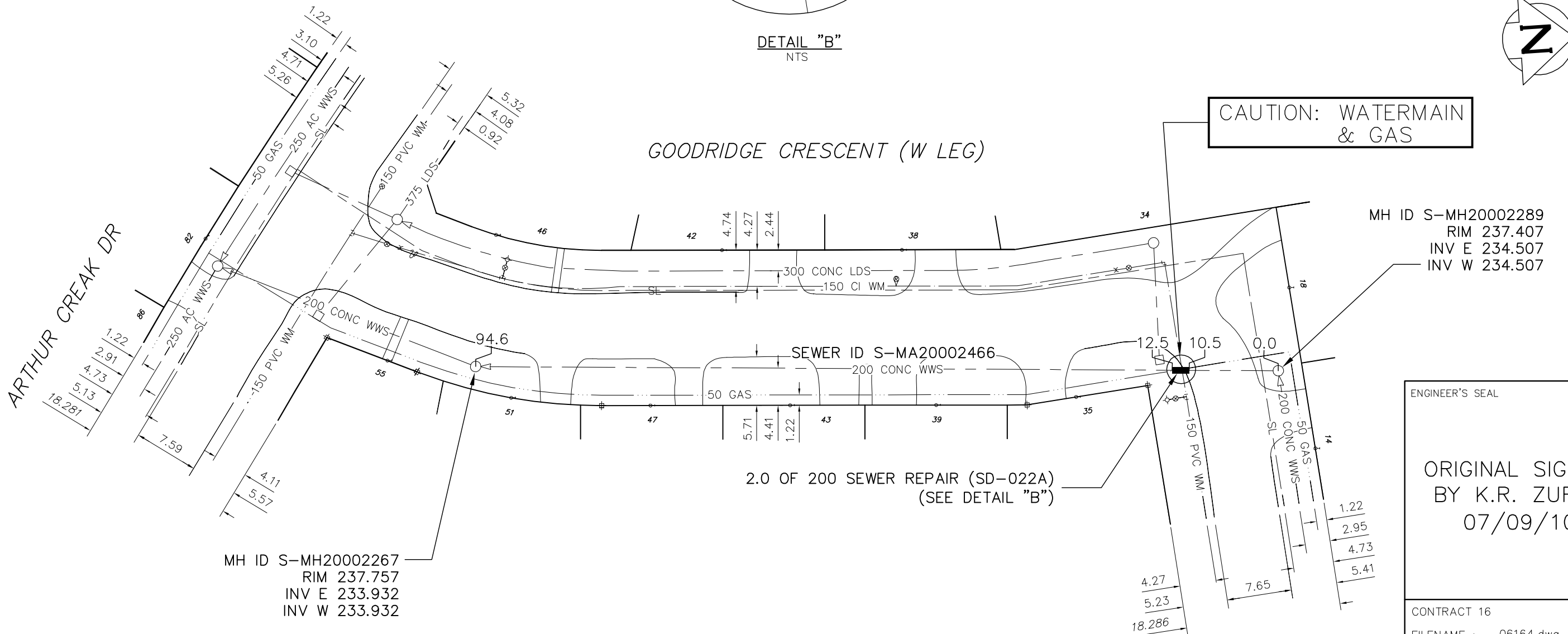
SEWER JUNCTION INFORMATION FROM SEWER VIDEO INSPECTION SEWER ID S-MA20002466
DISTANCE FROM MH ID S-MH20002289 NO SERVICES WITHIN REPAIR



DETAIL "B"
NTS



CAUTION: WATERMAIN & GAS



ARTHUR CREAK DR

GOODRIDGE CRESCENT (W LEG)

MH ID S-MH20002289
RIM 237.407
INV E 234.507
INV W 234.507

MH ID S-MH20002267
RIM 237.757
INV E 233.932
INV W 233.932

2.0 OF 200 SEWER REPAIR (SD-022A)
(SEE DETAIL "B")

ENGINEER'S SEAL

ORIGINAL SIGNED
BY K.R. ZUREK
07/09/10

CONTRACT 16
FILENAME : 06164.dwg
PLOT DATE : 2007 09 10

LEGEND:

52.0 | MEASUREMENT TO REPAIR FROM REFERENCE MH SHOWN THUS... 0.0

METRIC
WHOLE NUMBERS INDICATE MILLIMETRES
DECIMALIZED NUMBERS INDICATE METRES

B.M. ELEV.	FIELD BOOK #:	CITY OF WINNIPEG WATER AND WASTE ENGINEERING DIVISION		THE CITY OF WINNIPEG WATER AND WASTE DEPARTMENT	
POSTED TO LBIS		DESIGNED BY: NC	CHECKED BY: TW/KZ	2007 SEWER RENEWALS AND REPAIRS CONTRACT 16	
		DRAWN BY: CJH	APPROVED BY: KZ	GOODRIDGE CRESCENT (W LEG)	
		HOR. SCALE: 1:500	RELEASED FOR CONSTRUCTION	1ST MH N OF ARTHUR CREAK DRIVE TO 2ND MH N OF ARTHUR CREAK DRIVE	
		NO. REVISIONS	DATE	DATE	DATE
			2007 09 10		
				SHEET 6 OF 25	CITY DRAWING NUMBER
				06164	