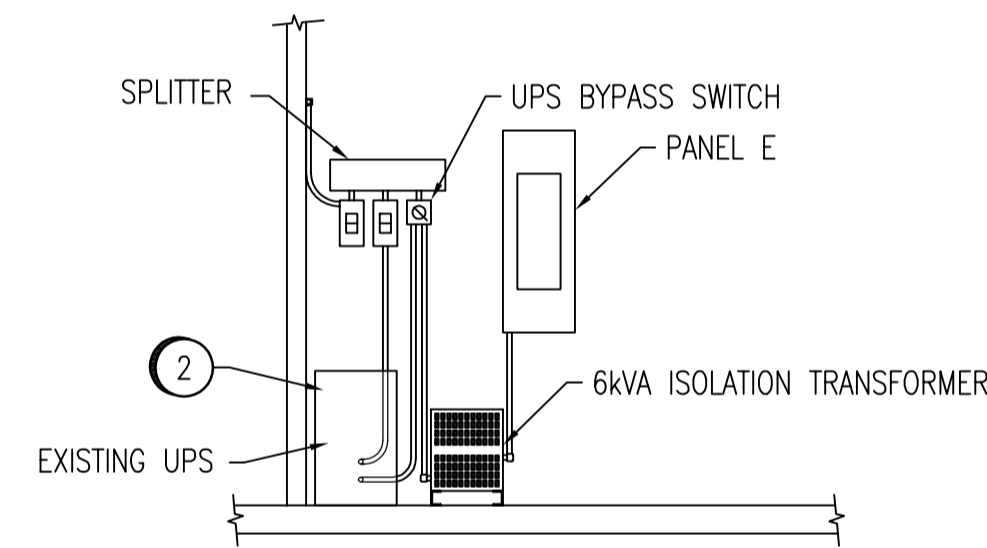
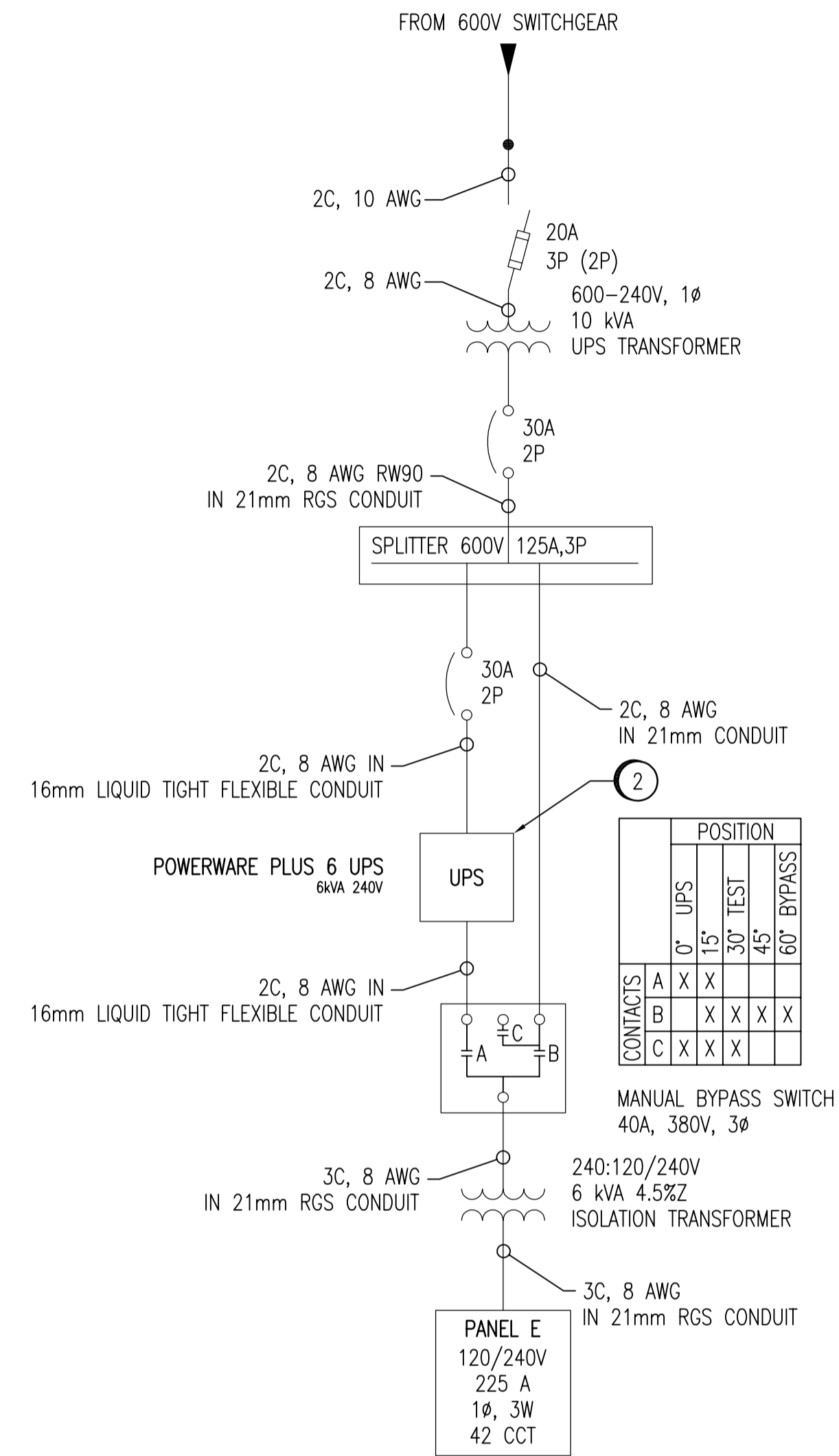


UPS ROOM PLAN
 SCALE: N.T.S.



SECTION F
 SCALE: N.T.S.



CONTACTS	POSITION					
	0'	15'	30'	45'	60'	BYPASS
A	X	X				
B	X	X	X	X		
C	X	X	X	X		

NO.	CONSTRUCTION NOTES
1	RELOCATE EXISTING SPLITTER AS REQUIRED.
2	REMOVE EXISTING POWERWARE PLUS 6 UPS AND ASSOCIATED BATTERY MODULE. SUPPLY, INSTALL, AND CONFIGURE NEW POWERWARE 9155 UPS. FOLLOW MANUFACTURER INSTRUCTIONS UNLESS OTHERWISE NOTED. DO NOT INTERRUPT POWER TO PANEL E WITHOUT APPROVAL OF THE CONTRACT ADMINISTRATOR!

DRAWING NUMBER	REFERENCE DRAWINGS
----------------	--------------------



B.M. ELEV.	FIELD BOOK #:
POSTED TO LBIS	
DESIGNED BY C. REIMER	CHECKED BY C. REIMER
DRAWN BY A. OLIVER	APPROVED BY C. REIMER
HOR. SCALE NTS	RELEASED FOR CONSTRUCTION
VERTICAL NTS	DATE 2007/07/05
0 ISSUED FOR TENDER	2008/01/08 AEO
NO. REVISIONS	DATE BY

SNC-LAVALIN INC.
 148 Nature Park Way
 Winnipeg, MB, Canada R3P 0X7
 204-786-8080

FILENAME: 1-0660M-E0001-001-00.dwg

ENGINEER'S SEAL
PRELIMINARY
NOT TO BE USED FOR CONSTRUCTION

THE CITY OF WINNIPEG
 WATER AND WASTE DEPARTMENT

TACHE BOOSTER PUMPING STATION
 UPS UPGRADES
 SINGLE LINE DIAGRAM & LAYOUT
 EXISTING CONFIGURATION

CITY DRAWING NUMBER: 1-0660M-E0001
 SHEET: 001
 REV: 0
 SIZE: A1