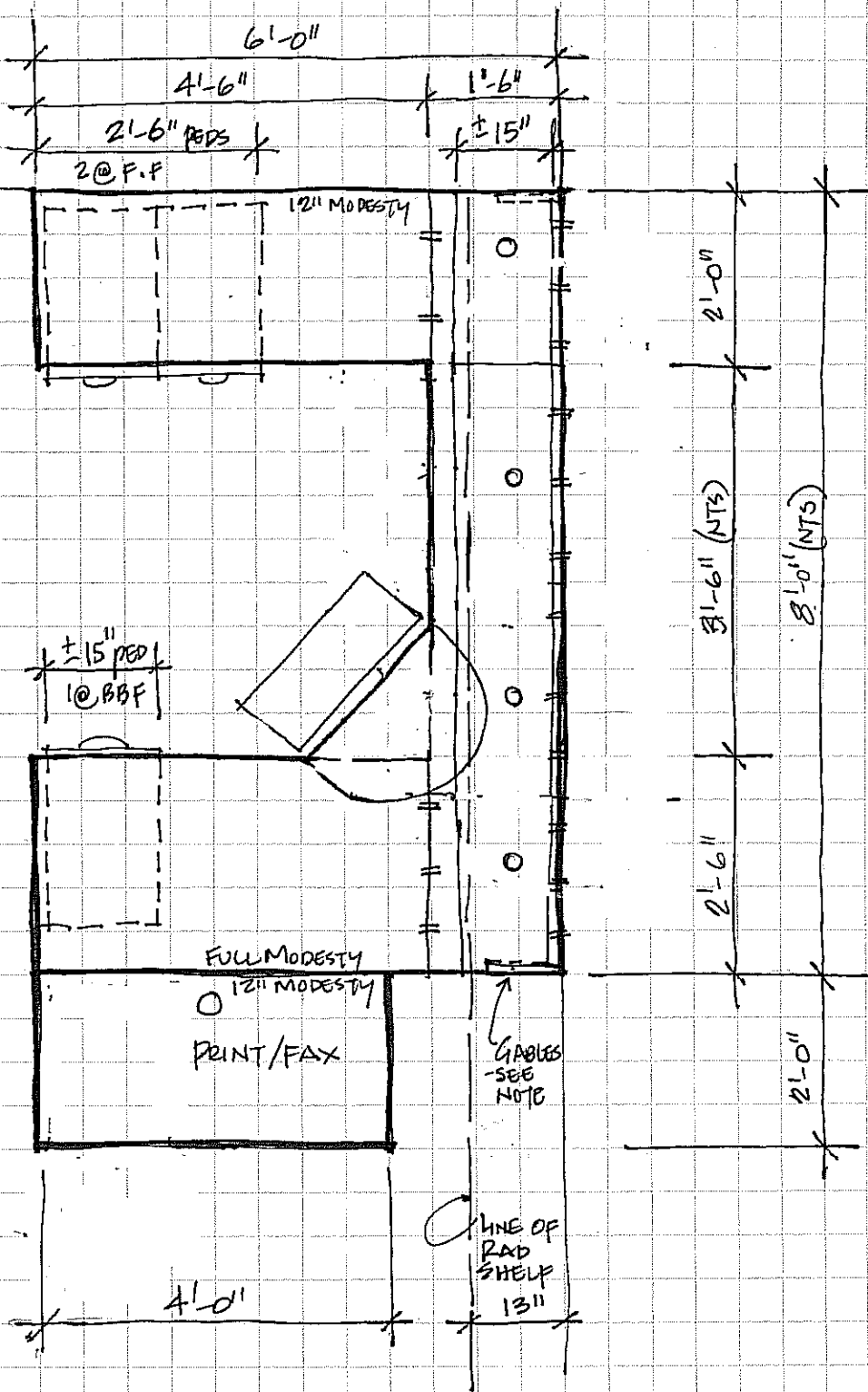


- KEYBOARD TRAY / DRAWER
- CORNER MAKER METAL SLEEVE
- 4 PEDS,
 - 1 @ FIXED, FF FOR PRINTER STATION
 - 3 @ MOBILE, LOCKABLE, KEYPAD ALIKE
 - 1 @ BBF
 - 2 @ F.F.
- STANDARD HUTCH
- 5 GROMMETS
- 18" WORKSURFACE OVER RAD/SHELF MTD TO WAW ON LEADER STRIP AND ATTACHED TO OTHER FREE-STANDING LEGS OR PIECES. GABLES MAY ALSO BE USED AS REQ'D SET ATOP RAD SHELF. APPROX HEIGHT OF RAD SHELF IS 8" - VERIFY ON SITE
- ATTACH CORNER SLEEVE W. SCREWS. ATTACH KEYBOARD TO SLEEVE + DESK



WEST KILDONAN LIBRARY PAGE 1
 365 JEFFERSON → WORK ROOM + COMMON
 PRINT / FAX STATION

A-24

LEDH
 AUG '07