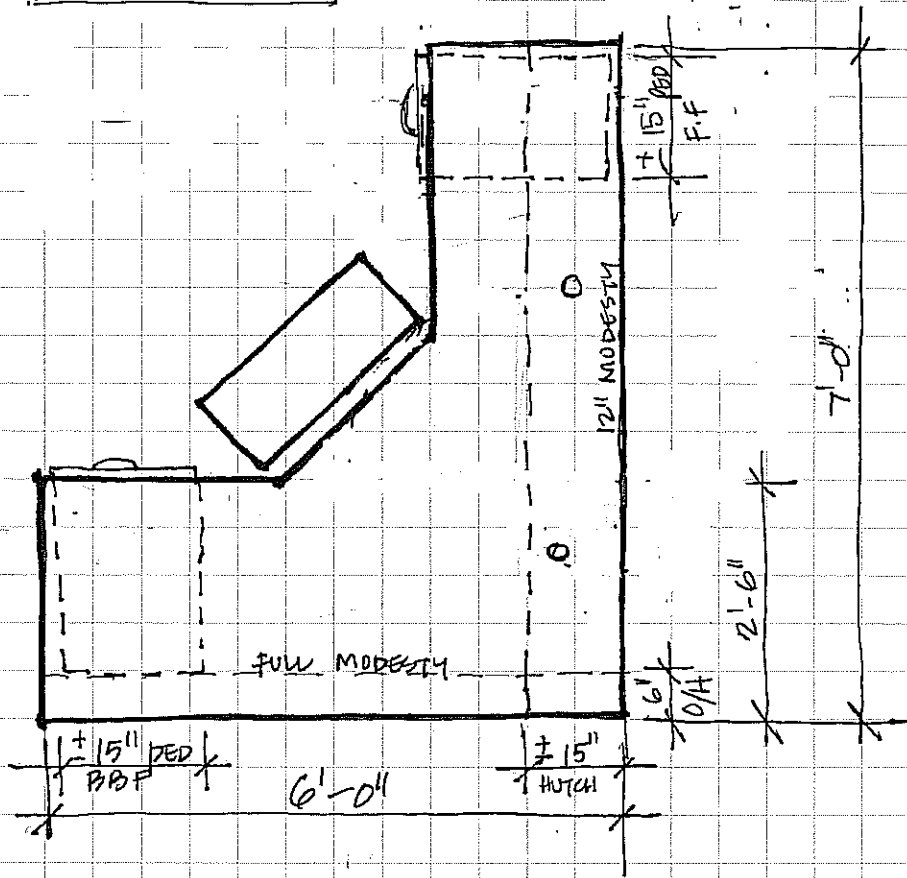
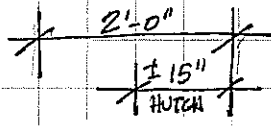
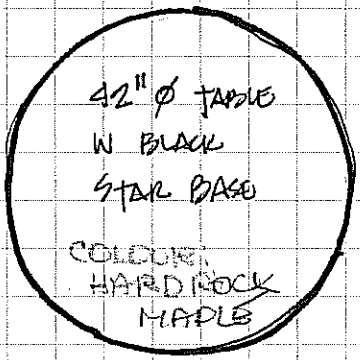


BOOKCASE
SEE PAGE 3



- KEYBOARD TRAY/DRAWER
- 2 @ MOBILE LOCKABLE PEDS
KEYED ALIKE
1 @ BBF
1 @ FF

- STANDARD BOOKCASE
- STANDARD O/H BOOKCASE
- 6" OVERHANG ON "FRONT"
- 2 GROMMET
- TACK BOARDS UNDER
HUTCH
- 2 LIGHTS
- TABLE



ET. GARRY LIBRARY PAGE 2
SUPERVISOR'S OFFICE
COLOURS: ENCLOSED FOR
CARCASS -
WORK SURFACE, HUTCHES &
BOOKCASE: HARD ROCK MAPLE
TACKBOARD: TERRA COTTA #53

SDH A-7
AUG '01