









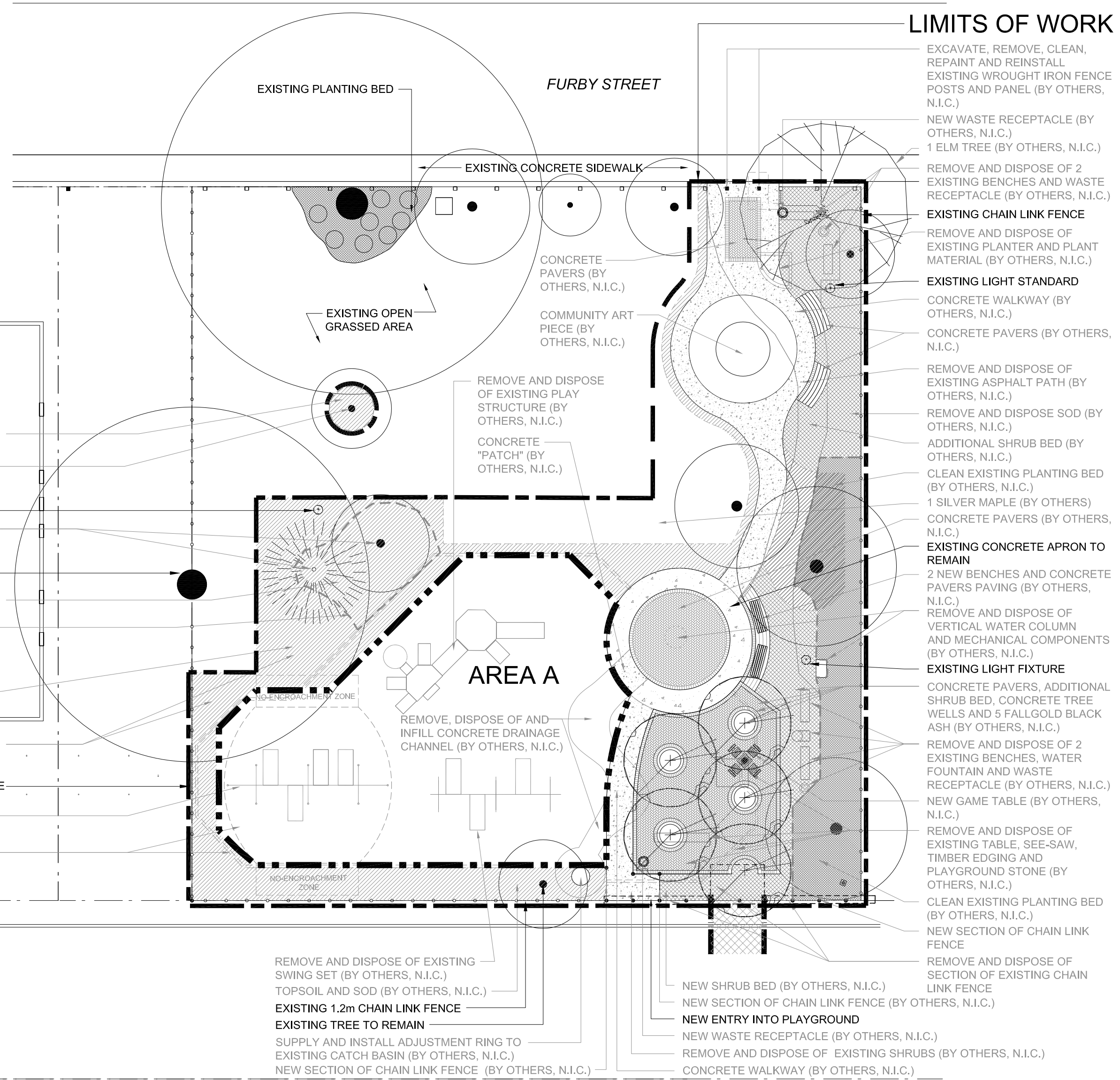
**LEGEND**

-  PROPERTY LINE
-  LIMITS OF WORK
-  APPROXIMATE LIMITS OF NEW PLAY AREAS AVAILABLE
-  CONSTRUCTION ACCESS LOCATION
-  EXISTING TREES
-  EXISTING SHRUB BED
-  PROPOSED SHRUB BED
-  APPROXIMATE AREAS OF NEW TOPSOIL AND SOD

**NOTES**  
**GENERAL NOTES**

1. CONTRACTOR TO CONFIRM ALL EXISTING CONDITIONS, DIMENSIONS AND MATERIALS ON SITE AND REPORT ANY DISCREPANCIES TO THE CONTRACT ADMINISTRATOR PRIOR TO CONSTRUCTION.
2. LOCATION OF UNDERGROUND STRUCTURES AS SHOWN ARE BASED ON THE BEST INFORMATION AVAILABLE BUT NO GUARANTEE IS GIVEN OR THAT THE GIVEN LOCATIONS ARE EXACT. CONFIRMATION OF EXISTENCE AND EXACT LOCATION OF ALL SERVICES MUST BE OBTAINED FROM THE INDIVIDUAL UTILITIES BEFORE PROCEEDING WITH CONSTRUCTION.
3. CONSTRUCTION ACCESS TO BE LIMITED TO THE ROUTES SPECIFIED ON SITE BY CONTRACT ADMINISTRATOR
4. ALL EXISTING TREES, SHRUBS, SIDEWALKS, CURBS, SOD, UTILITIES AND PAVING TO BE PROTECTED (UNLESS OTHERWISE NOTED) DURING CONSTRUCTION TO CITY OF WINNIPEG STANDARDS. CONTRACTOR TO MAKE GOOD ALL DAMAGED AREA DURING CONSTRUCTION BOTH ON AND OFF SITE TO CITY OF WINNIPEG STANDARDS AT THE CONTRACTORS COSTS
5. EXISTING GRADE TO BE MAINTAINED AT ALL PROPERTY LINES AND CITY SIDEWALKS AND WITHIN 3m OF TREES. ENSURE POSITIVE DRAINAGE IN ALL AREAS
6. ALL PROPOSED ELEVATIONS ARE FINISHED ELEVATIONS
7. ALL NOTES IN GREY INDICATE WORK TO BE COMPLETED BY OTHERS UNDER SEPARATE CONTRACT
8. LAYOUT AND GRADING TO BE APPROVED BY CONTRACT ADMINISTRATOR PRIOR TO ANY CONSTRUCTION OR REMOVAL
9. PLAY AREA A LIMITS SHOWN IS A MAXIMUM ONLY. EFFICIENT USE OF SPACE AND MATERIALS WILL BE EVALUATED
10. PLAY AREA A TO BE EXCAVATED BY SITE WORKS CONTRACTOR, ENSURE SUBGRADE GRADE TO DRAIN (MIN. 1%) PRIOR TO INSTALLATION OF PLAY SURFACE
11. TIMBER EDGING TO BE SUPPLIED AND INSTALLED BY SITE WORKS CONTRACTOR AS PER PLAY EQUIPMENT CONTRACTOR'S LAYOUT. PLAY AREA LAYOUT TO AVOID 90° ANGLES (OR LESS) FORMED BY TIMBER EDGING ON INSIDE OF PROTECTIVE SURFACING ZONE
12. REFER ALSO TO WRITTEN SPECIFICATIONS

- AREA A**
13. SUPPLY & INSTALL PLAYGROUND STONE AS PER DRAWINGS AND SPECIFICATIONS
  14. SUPPLY & INSTALL PLAY EQUIPMENT AS PER MANUFACTURERS SPECIFICATIONS AND IN ACCORDANCE WITH CSA STANDARDS
  15. PLAY EQUIPMENT TO INCLUDE (BUT SHALL NOT BE LIMITED TO):
    - HEAVY DUTY PLAY STRUCTURE FOR 5-12 YEAR OLDS
    - SINGLE-BAY, HEAVY DUTY SWING SET WITH 2 SLASH PROOF INFANT SEATS
    - INDIVIDUAL PLAY COMPONENTS TO ACCOMMODATE 2-12 YEAR OLDS
    - ACCESSIBLE PLAY COMPONENTS
  16. CREATIVE LAYOUT OF PLAY EQUIPMENT WILL BE EVALUATED



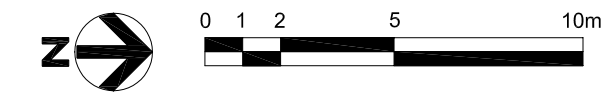
**LIMITS OF WORK**

- EXCAVATE, REMOVE, CLEAN, REPAINT AND REINSTALL EXISTING WROUGHT IRON FENCE POSTS AND PANEL (BY OTHERS, N.I.C.)
- NEW WASTE RECEPTACLE (BY OTHERS, N.I.C.)
- 1 ELM TREE (BY OTHERS, N.I.C.)
- REMOVE AND DISPOSE OF 2 EXISTING BENCHES AND WASTE RECEPTACLE (BY OTHERS, N.I.C.)
- EXISTING CHAIN LINK FENCE
- REMOVE AND DISPOSE OF EXISTING PLANTER AND PLANT MATERIAL (BY OTHERS, N.I.C.)
- EXISTING LIGHT STANDARD
- CONCRETE WALKWAY (BY OTHERS, N.I.C.)
- CONCRETE PAVERS (BY OTHERS, N.I.C.)
- REMOVE AND DISPOSE OF EXISTING ASPHALT PATH (BY OTHERS, N.I.C.)
- REMOVE AND DISPOSE SOD (BY OTHERS, N.I.C.)
- ADDITIONAL SHRUB BED (BY OTHERS, N.I.C.)
- CLEAN EXISTING PLANTING BED (BY OTHERS, N.I.C.)
- 1 SILVER MAPLE (BY OTHERS)
- CONCRETE PAVERS (BY OTHERS, N.I.C.)
- EXISTING CONCRETE APRON TO REMAIN
- 2 NEW BENCHES AND CONCRETE PAVERS PAVING (BY OTHERS, N.I.C.)
- REMOVE AND DISPOSE OF VERTICAL WATER COLUMN AND MECHANICAL COMPONENTS (BY OTHERS, N.I.C.)
- EXISTING LIGHT FIXTURE
- CONCRETE PAVERS, ADDITIONAL SHRUB BED, CONCRETE TREE WELLS AND 5 FALLGOLD BLACK ASH (BY OTHERS, N.I.C.)
- REMOVE AND DISPOSE OF 2 EXISTING BENCHES, WATER FOUNTAIN AND WASTE RECEPTACLE (BY OTHERS, N.I.C.)
- NEW GAME TABLE (BY OTHERS, N.I.C.)
- REMOVE AND DISPOSE OF EXISTING TABLE, SEE-SAW, TIMBER EDGING AND PLAYGROUND STONE (BY OTHERS, N.I.C.)
- CLEAN EXISTING PLANTING BED (BY OTHERS, N.I.C.)
- NEW SECTION OF CHAIN LINK FENCE
- REMOVE AND DISPOSE OF SECTION OF EXISTING CHAIN LINK FENCE
- NEW SHRUB BED (BY OTHERS, N.I.C.)
- NEW SECTION OF CHAIN LINK FENCE (BY OTHERS, N.I.C.)
- NEW ENTRY INTO PLAYGROUND
- NEW WASTE RECEPTACLE (BY OTHERS, N.I.C.)
- REMOVE AND DISPOSE OF EXISTING SHRUBS (BY OTHERS, N.I.C.)
- CONCRETE WALKWAY (BY OTHERS, N.I.C.)

- EXISTING APARTMENT BUILDING
- TOPSOIL AND SOD (BY OTHERS, N.I.C.)
- REMOVE AND DISPOSE OF EXISTING TREE (BY OTHERS, N.I.C.)
- EXISTING LIGHT FIXTURE
- REMOVE AND DISPOSE OF 2 EXISTING TREES (BY OTHERS, N.I.C.)
- EXISTING TREE TO REMAIN
- TOPSOIL AND SOD (BY OTHERS, N.I.C.)
- APPROXIMATE EXTENTS OF EXISTING PLANTING BED TO BE EXCAVATED AND REMOVED (BY OTHERS, N.I.C.)
- REMOVE AND DISPOSE OF EXISTING SHRUB (BY OTHERS, N.I.C.)
- TOPSOIL AND SOD (BY OTHERS, N.I.C.)
- EXISTING 1.2m CHAIN LINK FENCE
- UPGRADE EXISTING SWING STRUCTURE (BY OTHERS, N.I.C.)
- REMOVE AND DISPOSE OF EXISTING TIMBER EDGING AND PLAYGROUND STONE (BY OTHERS, N.I.C.)

- REMOVE AND DISPOSE OF EXISTING SWING SET (BY OTHERS, N.I.C.)
- TOPSOIL AND SOD (BY OTHERS, N.I.C.)
- EXISTING 1.2m CHAIN LINK FENCE
- EXISTING TREE TO REMAIN
- SUPPLY AND INSTALL ADJUSTMENT RING TO EXISTING CATCH BASIN (BY OTHERS, N.I.C.)
- NEW SECTION OF CHAIN LINK FENCE (BY OTHERS, N.I.C.)

**1** FURBY STREET PLAYGROUND - PROPOSED SITEPLAN  
FS1 SCALE 1:200



**NOT FOR CONSTRUCTION**

All measurements in millimeters, unless otherwise noted.



DESIGNED BY	JW	CHECKED BY	DM
DRAWN BY	WF/JW	APPROVED BY	DM
HOR. SCALE:	AS SHOWN	RELEASED FOR CONSTRUCTION:	
VERTICAL:		DATE	
DATE	2007.09.21	DATE	

LANDSCAPE ARCHITECT'S SEAL

**THE CITY OF WINNIPEG**  
DEPARTMENT OF PLANNING,  
PROPERTY AND DEVELOPMENT

PROJECT TITLE	CITY OF WINNIPEG PLAYGROUND RENOVATIONS PLAY EQUIPMENT	SHEET	4	OF	5
FURBY STREET PLAYGROUND PROPOSED SITEPLAN		COMPUTER FILE NAME	7036-PLAY-FS.DWG		
		CITY DRAWING NUMBER	<b>PE-FS1</b>		