

CONSTRUCTION NOTES

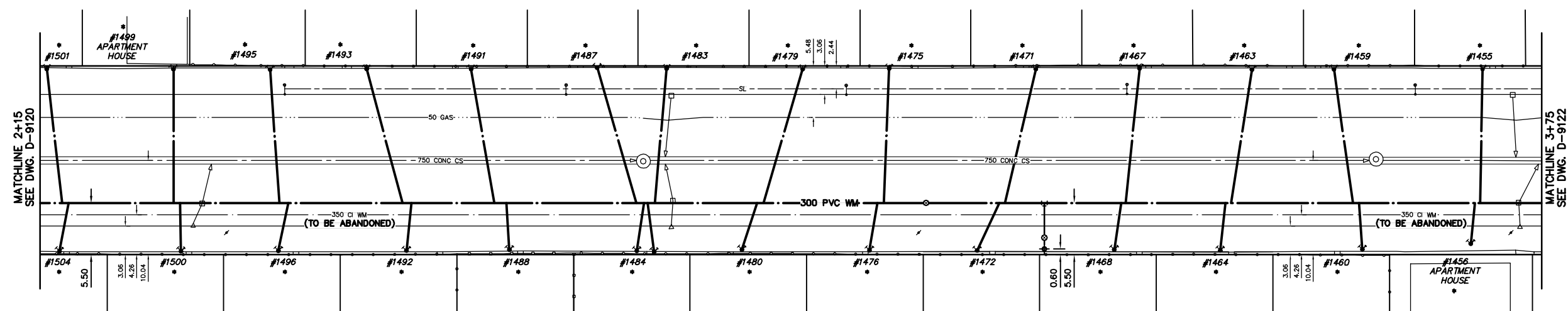
1. EXPOSE EXISTING WATERMAIN & CONFIRM INVERTS PRIOR TO CONSTRUCTION.
2. CONFIRM LOCATION OF ALL SERVICES IN THE FIELD.
3. INSTALL WATERMAIN BY TRENCHLESS METHODS.
4. TRENCHES AND EXCAVATIONS WITHIN 1 METRE OF A PAVED AREA INCLUDING SIDEWALKS SHALL BE CLASS 3 BACKFILL.
5. ALL MATERIALS SHALL CONFORM TO THE CITY OF WINNIPEG STANDARD CONSTRUCTION SPECIFICATIONS.
6. MINIMUM COVER TO TOP OF WATERMAIN SHALL BE 2.4 m.
7. REPLACE ALL EXISTING LEAD SERVICES FROM PROPOSED WATERMAIN TO P.
8. NOTIFY ALL AFFECTED RESIDENTS AND BUSINESSES 24 HOURS IN ADVANCE OF ANY WATER SHUTDOWNS OR DISRUPTION OF SERVICE.

NOTE: CHAINAGES SHOWN ARE ALONG S. R. OF LOGAN AVENUE

LOGAN AVENUE



FOR SERVICE INFORMATION
SEE DRAWING D-9123



WARNING

IF POWER EQUIPMENT OR EXPLOSIVES ARE TO BE USED FOR EXCAVATION ON THIS PROJECT THE CONTRACTOR MUST:

- 1) NOTIFY THE GAS COMPANY OF THE PROPOSED LOCATION OF EXCAVATION.
- 2) TAKE PRECAUTION TO AVOID DAMAGE TO GAS COMPANY INSTALLATIONS.

SEE PROVINCIAL REGULATION 210/72 FOR DETAILS

METRIC
WHOLE NUMBERS INDICATE MILLIMETRES
DECIMALIZED NUMBERS INDICATE METRES
NOTE: ALL VALVES TO BE INSTALLED CLOCKWISE TO CLOSE

200 WM	WATERMAIN	200 WM	SL, HYDRO	150 WM	WATERMAIN	150 WM
HYDRANT	HYDRANT	MTS	TRAFFIC SIGNALS	50 GAS	LAND DRAINAGE SEWER	300 LDS
VALVE	VALVE	GAS	SURVEY BAR	250 WWS	WASTEWATER SEWER	250 WWS
525 LDS	LAND DRAINAGE SEWER	525 LDS	50 GAS	300 LDS	LAND DRAINAGE SEWER	300 LDS
375 WWS	WASTEWATER SEWER	375 WWS	MANHOLE	50 GAS	WASTEWATER SEWER	250 WWS
MANHOLE	MANHOLE	FENCE	CATCH BASIN	POLE - HYDRO, MTS	GROUND ABOVE PIPE	
CATCH BASIN	CATCH BASIN	POLE - HYDRO, MTS	CURB INLET	CURB STOP	? DITCH (NORTH & WEST)	
CURB INLET	CURB INLET	CURB STOP	REDUCER	GUY ANCHOR	? DITCH (SOUTH & EAST)	
REDUCER	REDUCER	GUY ANCHOR	COUPLER	LIGHT STANDARD	GUTTER (NORTH & WEST)	
COUPLER	COUPLER	LIGHT STANDARD	ANODE	TREE	GUTTER (SOUTH & EAST)	
ANODE	ANODE	TREE	EXISTING	LEGEND-PLAN	PROPOSED	EXISTING
LEGEND-PLAN	PROPOSED	EXISTING	LEGEND-PROFILE	PROPOSED	EXISTING	PROPOSED

LOCATION APPROVED UNDERGROUND STRUCTURES		B.M. ELEV.	FIELD BOOK #:
SUPV. U/C STRUCTURES COMMITTEE	DATE	POSTED TO LBIS	
NOTE: LOCATION OF UNDERGROUND STRUCTURES AS SHOWN ARE BASED ON THE BEST INFORMATION AVAILABLE BUT NO GUARANTEE IS GIVEN THAT ALL EXISTING UTILITIES ARE SHOWN OR THAT THE GIVEN LOCATIONS ARE EXACT. CONFIRMATION OF EXISTENCE AND EXACT LOCATION OF ALL SERVICES MUST BE OBTAINED FROM THE INDIVIDUAL UTILITIES BEFORE PROCEEDING WITH CONSTRUCTION.		NO.	REVISIONS
		DATE	BY

CITY OF WINNIPEG
WATER AND WASTE
ENGINEERING DIVISION

DESIGNED BY: SC
CHECKED BY: TW
DRAWN BY: PB/CH
APPROVED BY: KZ
HOR. SCALE: 1:250
VERTICAL: 1:50
DATE: 2007.02.21

ENGINEER'S SEAL
ORIGINAL SIGNED BY S.R.J. COURNOYER 07/02/21

THE CITY OF WINNIPEG
WATER AND WASTE DEPARTMENT

2007 WATERMAIN RENEWALS

LOGAN AVENUE
17 m E OF CECIL STREET (STA 2+15) TO 58 m W OF QUELCH STREET (STA 3+75)

SHEET 2 OF 6
CITY DRAWING NUMBER D-9121