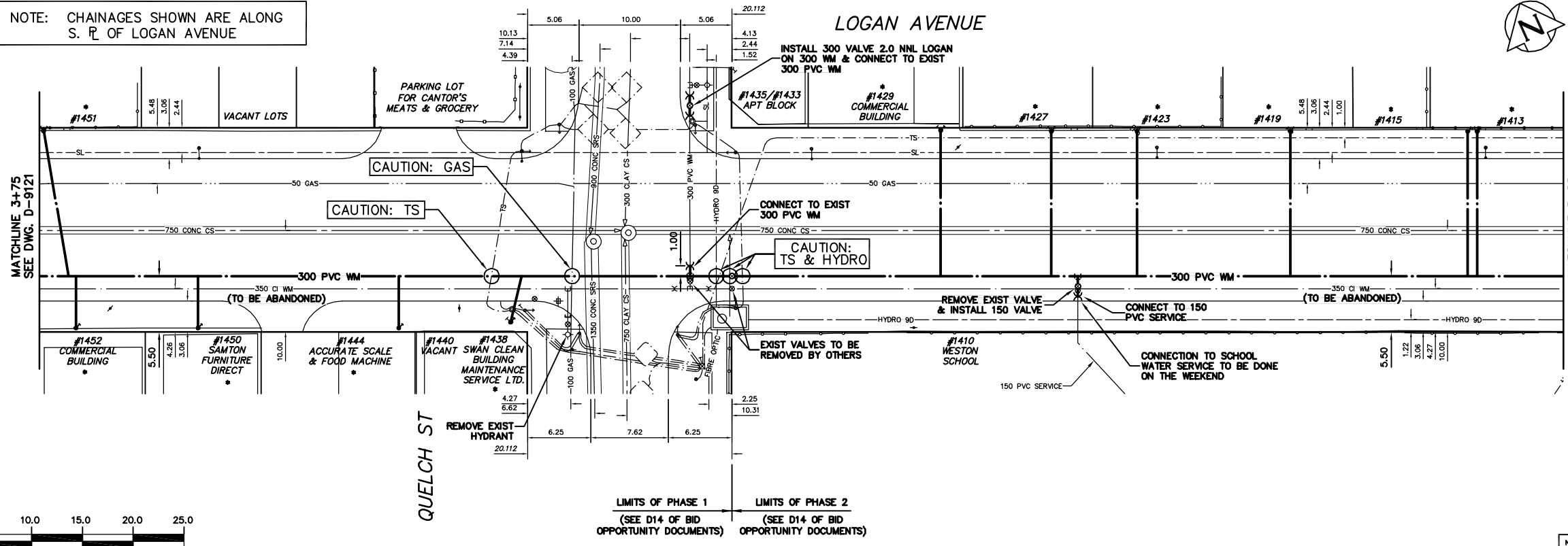


CONSTRUCTION NOTES

1. EXPOSE EXISTING WATERMAIN & CONFIRM INVERTS PRIOR TO CONSTRUCTION.
2. CONFIRM LOCATION OF ALL SERVICES IN THE FIELD.
3. INSTALL WATERMAIN BY TRENCHLESS METHODS.
4. TRENCHES AND EXCAVATIONS WITHIN 1 METRE OF A PAVED AREA INCLUDING SIDEWALKS SHALL BE CLASS 3 BACKFILL.
5. ALL MATERIALS SHALL CONFORM TO THE CITY OF WINNIPEG STANDARD CONSTRUCTION SPECIFICATIONS.
6. MINIMUM COVER TO TOP OF WATERMAIN SHALL BE 2.4 m.
7. REPLACE ALL EXISTING LEAD SERVICES FROM PROPOSED WATERMAIN TO R.
8. NOTIFY ALL AFFECTED RESIDENTS AND BUSINESSES 24 HOURS IN ADVANCE OF ANY WATER SHUTDOWNS OR DISRUPTION OF SERVICE.

NOTE: CHAINAGES SHOWN ARE ALONG S. R. OF LOGAN AVENUE



FOR SERVICE INFORMATION
SEE DRAWING D-9124

WARNING

IF POWER EQUIPMENT OR EXPLOSIVES ARE TO BE USED FOR EXCAVATION ON THIS PROJECT THE CONTRACTOR MUST:

- 1) NOTIFY THE GAS COMPANY OF THE PROPOSED LOCATION OF EXCAVATION.
- 2) TAKE PRECAUTION TO AVOID DAMAGE TO GAS COMPANY INSTALLATIONS.

SEE PROVINCIAL REGULATION 210/72 FOR DETAILS

METRIC
WHOLE NUMBERS INDICATE MILLIMETRES
DECIMAL NUMBERS INDICATE METRES
NOTE: ALL VALVES TO BE INSTALLED CLOCKWISE TO CLOSE

200 WM	WATERMAIN	200 WM	SL, HYDRO	150 WM	WATERMAIN	150 WM
⊕	HYDRANT	⊕	MTS	⊕	HYDRANT	⊕
⊙	VALVE	⊙	TRAFFIC SIGNALS	⊙	VALVE	⊙
525 LDS	LAND DRAINAGE SEWER	525 LDS	GAS	50 GAS	300 LDS	LAND DRAINAGE SEWER
375 WWS	WASTEWATER SEWER	375 WWS	SURVEY BAR	250 WWS	250 WWS	WASTEWATER SEWER
○	MANHOLE	●	FENCE	⊕	⊕	PROFILE
□	CATCH BASIN	■	POLE - HYDRO, MTS	—	—	GROUND ABOVE PIPE
▽	CURB INLET	♂	CURB STOP	?	?	DITCH (NORTH & WEST)
∇	REDUCER	←	GUY ANCHOR	?	?	DITCH (SOUTH & EAST)
X	COUPLER	→	LIGHT STANDARD	—	—	GUTTER (NORTH & WEST)
⊕	ANODE	⊕	TREE	—	—	GUTTER (SOUTH & EAST)
EXISTING	LEGEND-PLAN	PROPOSED	EXISTING	LEGEND-PLAN	PROPOSED	EXISTING
EXISTING	LEGEND-PROFILE	PROPOSED	EXISTING	LEGEND-PROFILE	PROPOSED	EXISTING

LOCATION APPROVED UNDERGROUND STRUCTURES

DATE

NOTE: LOCATION OF UNDERGROUND STRUCTURES AS SHOWN ARE BASED ON THE BEST INFORMATION AVAILABLE BUT NO GUARANTEE IS GIVEN THAT ALL EXISTING UTILITIES ARE SHOWN OR THAT THE GIVEN LOCATIONS ARE EXACT. CONFIRMATION OF EXISTENCE AND EXACT LOCATION OF ALL SERVICES MUST BE OBTAINED FROM THE INDIVIDUAL UTILITIES BEFORE PROCEEDING WITH CONSTRUCTION.

CITY OF WINNIPEG
WATER AND WASTE
ENGINEERING DIVISION

DESIGNED BY: SC
CHECKED BY: TW
DRAWN BY: PB/CH
APPROVED BY: KZ
HOR. SCALE: 1:250
VERTICAL: 1:50
DATE: 2007.02.21

ENGINEER'S SEAL

ORIGINAL SIGNED BY S.R.J. COURNOYER 07/02/21

BID OPPORTUNITY: 74-2007
FILENAME: D-9122.dwg
PLOT DATE: 2007 02 21

THE CITY OF WINNIPEG
WATER AND WASTE DEPARTMENT

2007 WATERMAIN RENEWALS

LOGAN AVENUE
58 m W OF QUELCH ST (STA 3+75) TO
91 m E OF QUELCH ST (STA 5+25)

SHEET 3 OF 6
CITY DRAWING NUMBER
D-9122