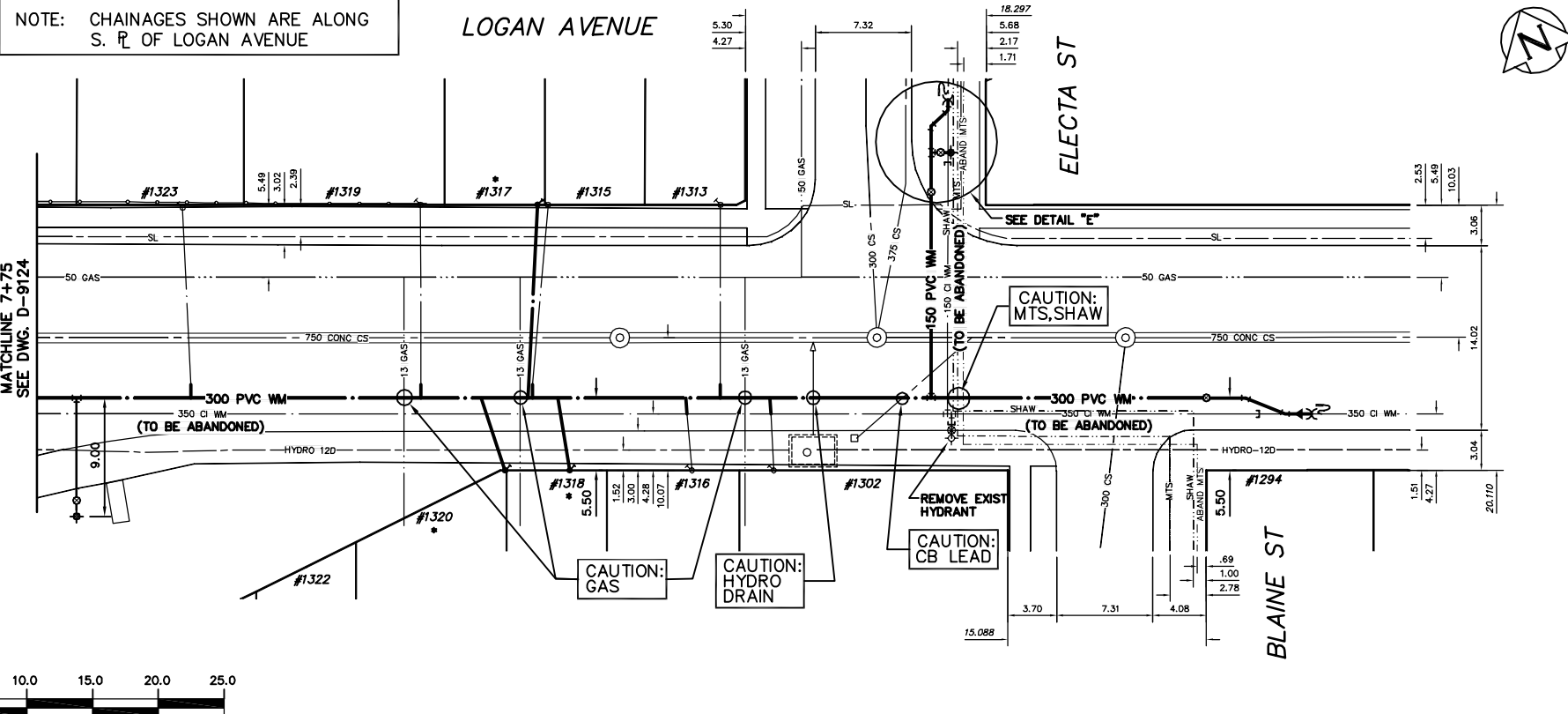


WATER SERVICE INFORMATION

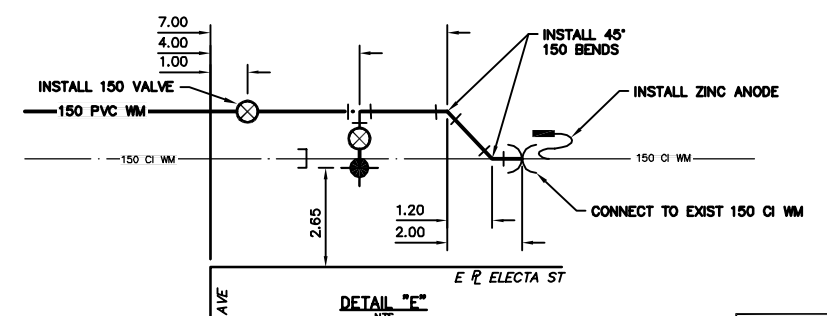
ADDRESS	SIZE(mm) & TYPE (STREET)	SIZE(mm) & TYPE (PROP)	SHORT & LONG MEASUREMENT	CORP. LOCATION	REMARKS
1302 LOGAN AVE RESIDENTIAL	20 COPPER	20 COPPER	1.89 EWL OF HOUSE	0.31 W OF S/C	-
1313 LOGAN AVE RESIDENTIAL	20 COPPER	20 COPPER	17.80 WWL OF BLAINE	OPP S/C	-
1315 LOGAN AVE RESIDENTIAL	20 COPPER	20 COPPER	0.46 WEL OF HOUSE	OPP S/C	-
1316 LOGAN AVE RESIDENTIAL	20 COPPER	20 COPPER	1.68 WEL OF ELECTA	1.22 W OF S/C #1317	TAPPED ON OPP SIDE DOM DBLE W/#1317 LOGAN
1317 LOGAN AVE RESIDENTIAL	20 COPPER	20 COPPER	0.31 EWL OF HOUSE	0.46 W OF S/C	-
1318 LOGAN AVE RESIDENTIAL	20 COPPER	20 COPPER	15.09 WWL OF ELECTA	0.91 W OF S/C	-
1319 LOGAN AVE RESIDENTIAL	20 COPPER	20 COPPER	2.59 WEL OF HOUSE	0.46 W OF S/C	-
1320 LOGAN AVE RESIDENTIAL	20 COPPER	20 COPPER	3.66 WWL ELECTA	1.18 W OF S/C	TAPPED ON OPP SIDE--DBLE SERV W/#1315 LOP OCT20/99--LOP FEB5/00--NEW WATER JANG/05
1321 LOGAN AVE RESIDENTIAL	16 LEAD	12 LEAD	1.68 WEL OF HOUSE	0.91 W OF S/C	S/C--13.41 WWL OF ELECTA
1322 LOGAN AVE RESIDENTIAL	12 LEAD	12 LEAD	33.22 WWL OF BLAINE	0.61 E OF S/C	96/10/22--LEAK AT RING PIECE
1323 LOGAN AVE RESIDENTIAL	12 LEAD	12 LEAD	1.22 WEL OF HOUSE	0.61 E OF S/C	DBLE SERV WITH #1322
1324 LOGAN AVE RESIDENTIAL	12 LEAD	12 LEAD	24.09 WWL OF ELECTA	0.61 E OF S/C	DBLE SERV WITH #1320
1325 LOGAN AVE RESIDENTIAL	12 LEAD	12 LEAD	19.51 WWL OF ELECTA	0.61 E OF S/C	-
1326 LOGAN AVE RESIDENTIAL	20 COPPER	20 COPPER	19.51 WWL OF ELECTA	0.61 E OF S/C	-
1327 LOGAN AVE RESIDENTIAL	20 COPPER	20 COPPER	42.67 WWL OF ELECTA	0.61 E OF S/C	-

*SERVICES TO BE RENEWED TO R ALL OTHERS TO BE RECONNECTED

NOTE: CHAINAGES SHOWN ARE ALONG S. R. OF LOGAN AVENUE



- CONSTRUCTION NOTES**
- EXPOSE EXISTING WATERMAIN & CONFIRM INVERTS PRIOR TO CONSTRUCTION.
 - CONFIRM LOCATION OF ALL SERVICES IN THE FIELD.
 - INSTALL WATERMAIN BY TRENCHLESS METHODS.
 - TRENCHES AND EXCAVATIONS WITHIN 1 METRE OF A PAVED AREA INCLUDING SIDEWALKS SHALL BE CLASS 3 BACKFILL.
 - ALL MATERIALS SHALL CONFORM TO THE CITY OF WINNIPEG STANDARD CONSTRUCTION SPECIFICATIONS.
 - MINIMUM COVER TO TOP OF WATERMAIN SHALL BE 2.4 m.
 - REPLACE ALL EXISTING LEAD SERVICES FROM PROPOSED WATERMAIN TO R.
 - NOTIFY ALL AFFECTED RESIDENTS AND BUSINESSES 24 HOURS IN ADVANCE OF ANY WATER SHUTDOWNS OR DISRUPTION OF SERVICE.



WARNING

IF POWER EQUIPMENT OR EXPLOSIVES ARE TO BE USED FOR EXCAVATION ON THIS PROJECT THE CONTRACTOR MUST:

- NOTIFY THE GAS COMPANY OF THE PROPOSED LOCATION OF EXCAVATION.
- TAKE PRECAUTION TO AVOID DAMAGE TO GAS COMPANY INSTALLATIONS.

SEE PROVINCIAL REGULATION 210/72 FOR DETAILS

METRIC

WHOLE NUMBERS INDICATE MILLIMETRES
DECIMAL NUMBERS INDICATE METRES

NOTE: ALL VALVES TO BE INSTALLED CLOCKWISE TO CLOSE

200 WM	WATERMAIN	200 WM	SL, HYDRO	150 WM	WATERMAIN	150 WM
+	HYDRANT	+	MTS	+	HYDRANT	+
o	VALVE	o	TRAFFIC SIGNALS	o	VALVE	o
525 LDS	LAND DRAINAGE SEWER	525 LDS	GAS	50 GAS	300 LDS	300 LDS
375 WWS	WASTEWATER SEWER	375 WWS	SURVEY BAR	250 WWS	WASTEWATER SEWER	250 WWS
o	MANHOLE	o	FENCE	o	PROFILE	o
□	CATCH BASIN	□	POLE - HYDRO, MTS	□	GROUND ABOVE PIPE	□
▽	CURB INLET	▽	CURB STOP	▽	? DITCH (NORTH & WEST)	▽
◁	REDUCER	◁	GUY ANCHOR	◁	? DITCH (SOUTH & EAST)	◁
×	COUPLER	×	LIGHT STANDARD	×	GUTTER (NORTH & WEST)	×
⊕	ANODE	⊕	TREE	⊕	GUTTER (SOUTH & EAST)	⊕
EXISTING	LEGEND-PLAN	PROPOSED	EXISTING	LEGEND-PROFILE	PROPOSED	EXISTING

LOCATION APPROVED UNDERGROUND STRUCTURES

DATE: _____

NOTE: LOCATION OF UNDERGROUND STRUCTURES AS SHOWN ARE BASED ON THE BEST INFORMATION AVAILABLE BUT NO GUARANTEE IS GIVEN THAT ALL EXISTING UTILITIES ARE SHOWN OR THAT THE GIVEN LOCATIONS ARE EXACT. CONFIRMATION OF EXISTENCE AND EXACT LOCATION OF ALL SERVICES MUST BE OBTAINED FROM THE INDIVIDUAL UTILITIES BEFORE PROCEEDING WITH CONSTRUCTION.

S.M. ELEV. POSTED TO LBIS: _____

FIELD BOOK #: _____

CITY OF WINNIPEG WATER AND WASTE ENGINEERING DIVISION

DESIGNED BY: SC CHECKED BY: TW

DRAWN BY: PB APPROVED BY: KZ

HOR. SCALE: 1:250 RELEASED FOR CONSTRUCTION

VERTICAL: 1:50 DATE: 2007.02.21

ENGINEER'S SEAL: _____

ORIGINAL SIGNED BY S.R.J. COURNOYER 07/02/21

BID OPPORTUNITY: 74-2007
FILENAME: D-9125.dwg
PLOT DATE: 2007 02 21

THE CITY OF WINNIPEG WATER AND WASTE DEPARTMENT

2007 WATERMAIN RENEWALS

LOGAN AVENUE
WESTON STREET (STA 7+75) TO
22 m E OF BLAINE STREET

SHEET 6 OF 6
CITY DRAWING NUMBER: D-9125