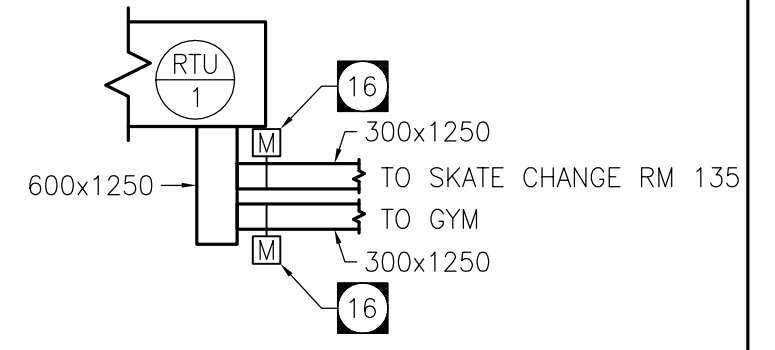


DRAWING NOTES:

- 19 SEPARATE GYM HEATING/COOLING SYSTEM RTU-1 ON THE ROOF. SEPARATE GYM HEATING /COOLING SYSTEM IS IN LIEU OF AHU-1. REVISE GAS PIPING AS REQUIRED TO SUITE SEPARATE RTU-1.
- 20 ACOUSTICALLY LINED RETURN AIR DUCT (SERVING SEPARATE RTU-1) INSTALLED TIGHT TO THE UNDERSIDE OF THE ROOF DECK BETWEEN THE ROOF JOISTS. COORDINATE INSTALLATION WITH ALL OTHER TRADES.
- 21 TWO ACOUSTICALLY LINED SUPPLY AIR DUCTS (SERVING SEPARATE RTU-1) INSTALLED TIGHT TO THE UNDERSIDE OF THE ROOF DECK BETWEEN THE ROOF JOISTS. COORDINATE INSTALLATION WITH ALL



RTU-1 SUPPLY AIR DUCT SECTION

M
S1
SCALE: NTS

DWG M-3.2 PART PLAN - SEPARATE SYSTEM IN LIEU OF AHU-1

SCALE: 1: 100

 <p>208-897 CORYDON AVE. WINNIPEG, MB. TEL: (204) 925-1150 FAX: (204) 925-1155</p>	<p>PROJECT TITLE: BRONX PARK COMMUNITY CENTRE WINNIPEG, MANITOBA</p>	<p>FILE: 6150-MS-05</p>
	<p>DRAWING TITLE: SEPARATE PRICE ITEM 11 M-3.2 PART PLAN-SEPARATE SYSTEM</p>	<p>DATE: FEB. 14, 2008</p>
		<p>DRAWING NO. / REVISION NO. MS-05</p>