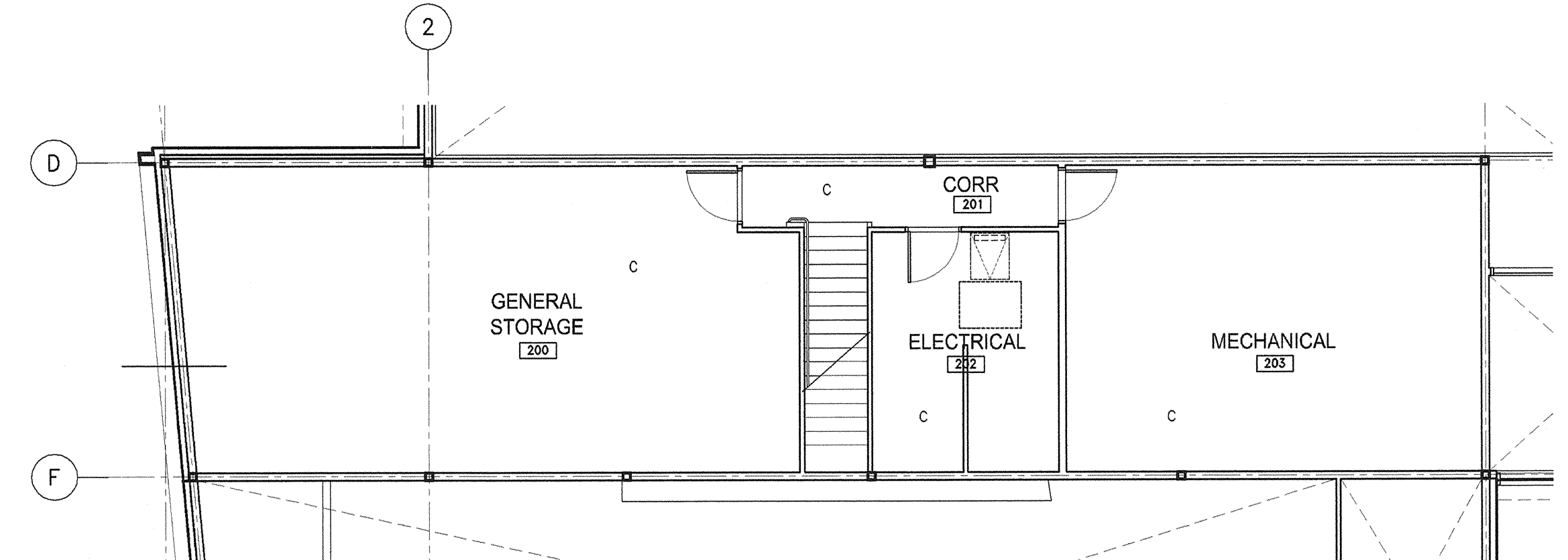


DATE: 18-JAN-2008 FILE NAME: 832-2007_A-1.6-F5.pdf
 DESCRIPTION: FLOOR FINISH PLANS
 PROJECT No: PP&D 2008-065
 ADDRESS: WINNIPEG, MANITOBA



1 MAIN FLOOR FINISH PLAN
 A-1.6 SCALE: 1:100



2 MEZZ FLOOR FINISH PLAN
 A-1.6 SCALE: 1:100

NOTES :
 THIS DRAWING MUST NOT BE SCALED.
 THE CONTRACTOR SHALL VERIFY ALL DIMENSIONS, DETAILS AND LEVELS FROM THE COMMENCEMENT OF WORK. ALL ERRORS AND OMISSIONS TO BE REPORTED TO THE CONTRACT ADMINISTRATOR BEFORE PROCEEDING.
 VARIATIONS AND MODIFICATIONS TO WORK SHOWN ON THESE DRAWINGS SHALL NOT BE MADE WITHOUT WRITTEN PERMISSION OF THE CONTRACT ADMINISTRATOR.
 THIS DRAWING IS THE EXCLUSIVE PROPERTY OF NUMBER TEN ARCHITECTURAL GROUP AND THE COPYRIGHT IN THE SAME IS RESERVED TO THEM. IT MAY BE REPRODUCED ONLY WITH THE PERMISSION OF THE CITY OF WINNIPEG.

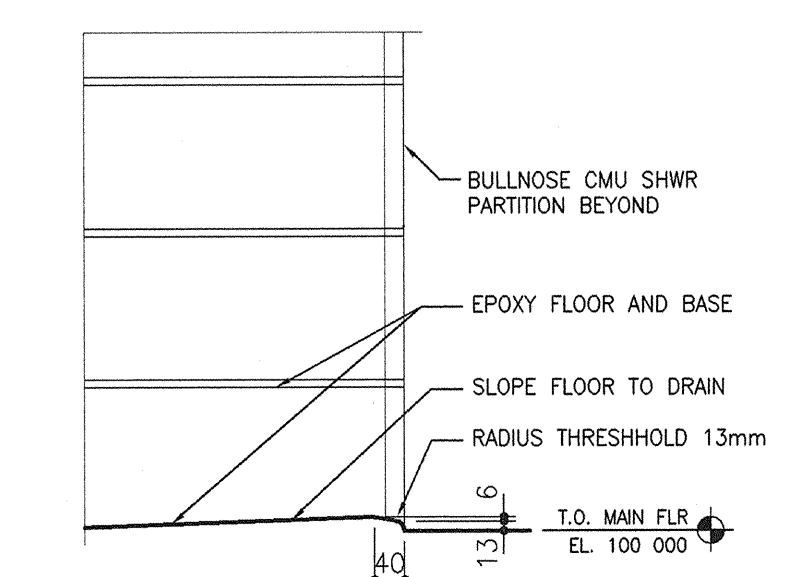
NOTE: ALL FLOOR AND WALL FINISHES ARE NOT IDENTIFIED ON THE PLAN. REFER TO ROOM FINISH SCHEDULE 09 08 00 IN SPECIFICATIONS AND ELEVATIONS FOR LOCATION OF ALL FINISHES

FLOOR FINISH NOTES:

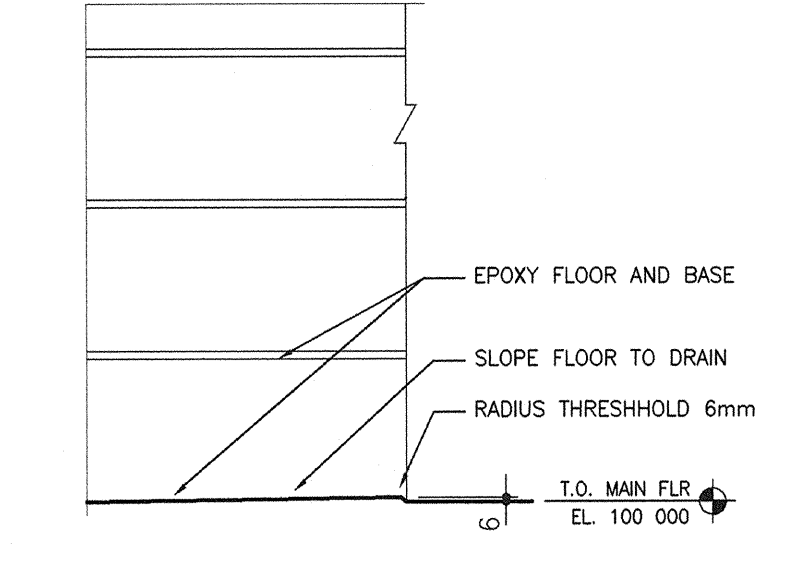
- ① EPOXY FLOOR EF-1 TO HAVE LEVEL TRANSITION WITH RUBBER FLOOR RF-1. PROVIDE E-1 SCHLUTER SCHEME TRIM BETWEEN THE TRANSITION OF EF-1 AND RF-1 FLOORINGS.
- ② RAMP/FEATHER UP CONCRETE SUBFLOOR GRADUALLY NEAR AND AT DOOR WITH CERAMITICUS MATERIAL TO HEIGHT AS REQUIRED TO PROVIDE LEVEL TRANSITIONS BETWEEN TWO DIFFERENT FLOOR MATERIALS.
- ③ RAMP/FEATHER UP CONCRETE SUBFLOOR GRADUALLY AT RSF-1 WITH CERAMITICUS MATERIAL TO HEIGHT AS REQUIRED TO PROVIDE LEVEL TRANSITIONS BETWEEN RSF-1 AND RF-3. DO NOT CUT THROUGH STUDDED SQUARE DESIGN OF RF-3 (AT RF-3 AND RSF-1 JOINT).
- T-1 INSTALL TRANSITIONS AS SPECIFIED AND SHOWN ON DRAWING A-1.6 BETWEEN TWO FLOOR MATERIALS.
- T-2
- T-3
- T-4
- T-5

WALL FINISH NOTES:

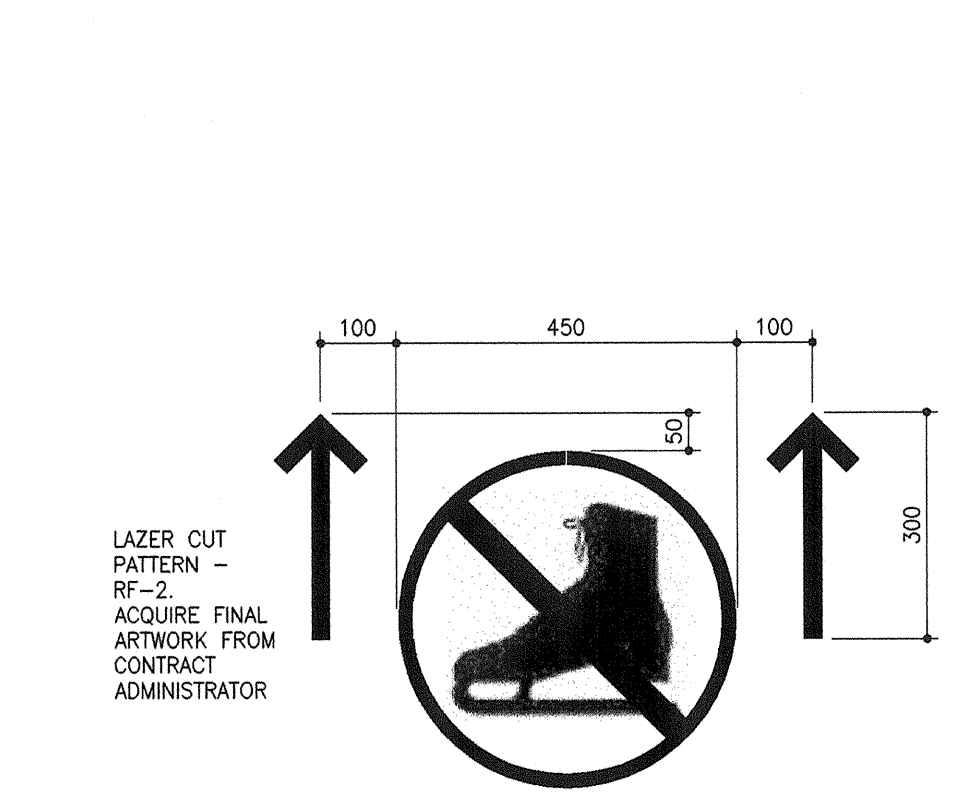
- E-1 INSTALL SCHLUTER EDGE PROTECTION SCHEME PROFILE E-1 AT EDGE OF WALL AT WALL TILES.
- E-2 INSTALL SCHLUTER EDGE PROTECTION ROUNDED PROFILE E-2 AT OUTSIDE WALL CORNERS AT WALL TILES.
- P- WALL FINISH COLOR AND TYPE IDENTIFICATION
- CT-



3 SHOWER THRESHOLD
 A-1.6 SCALE: 1:10



4 SHOWER THRESHOLD - BARRIER FREE STALLS
 A-1.6 SCALE: 1:10



5 FLOORING PATTERN - SKATE CHANGE 135
 A-1.6 SCALE: 1:10

numberTEN
 architectural group
 winnipeg MB victoria BC
 204 942.0981 250 360.2106
 architecture • interior design • graphic design

△	ISSUED FOR 40% REVIEW	26-OCT-2007
△	ISSUED FOR CLASS 'A' OPINION OF PROBABLE COSTS	28-NOV-2007
△	ISSUED FOR 80% REVIEW	7-DEC-2007
△	ISSUED FOR 100% REVIEW	11-JAN-2008
△	ISSUED FOR TENDER	18-JAN-2008

NO.	REVISION/DESCRIPTION	DATE

SEALS

PROVINCE OF MANITOBA
 NUMBER TEN ARCHITECTURAL GROUP
 No. 010
 PARTNERSHIP OF UNIVERSITARIANS

PROVINCE OF MANITOBA
 DOUG HANNA
 No. 18708
 REGISTERED ARCHITECT

DRAWN BY MC CHECKED BY DA APPROVED
 DATE 18-JAN-2008 USER APPROVAL

CITY OF WINNIPEG
 PLANNING, PROPERTY & DEVELOPMENT DEPARTMENT
 CIVIC ACCOMMODATIONS DIVISION
 300 - 85 GARRY ST. R3C 4K4

PROJECT
 BRONX PARK COMMUNITY CENTRE
 HOME OF GOOD NEIGHBOURS SENIOR CENTRE
 WINNIPEG, MANITOBA

SHEET TITLE
 MAIN FLOOR & MEZZANINE FLOOR
 FLOOR AND WALL FINISH PLANS