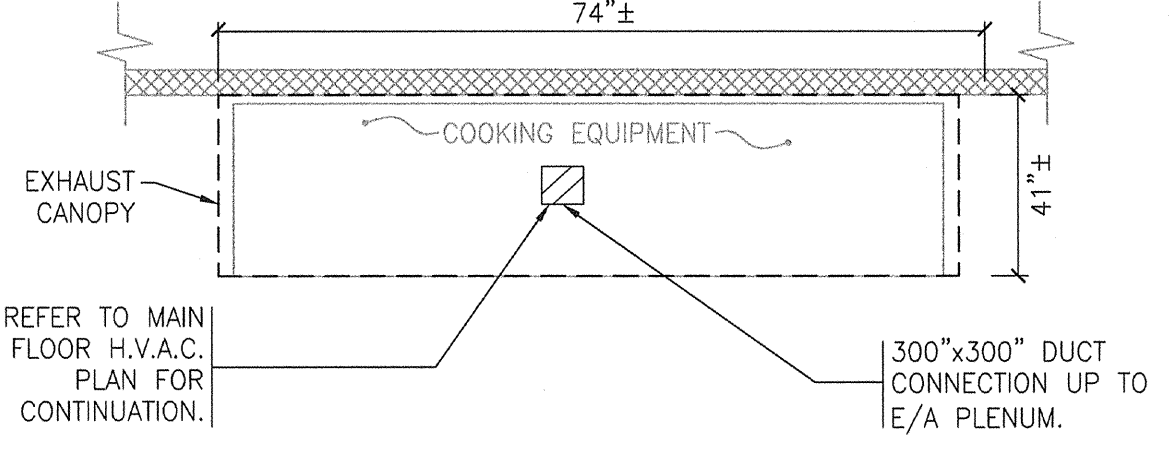
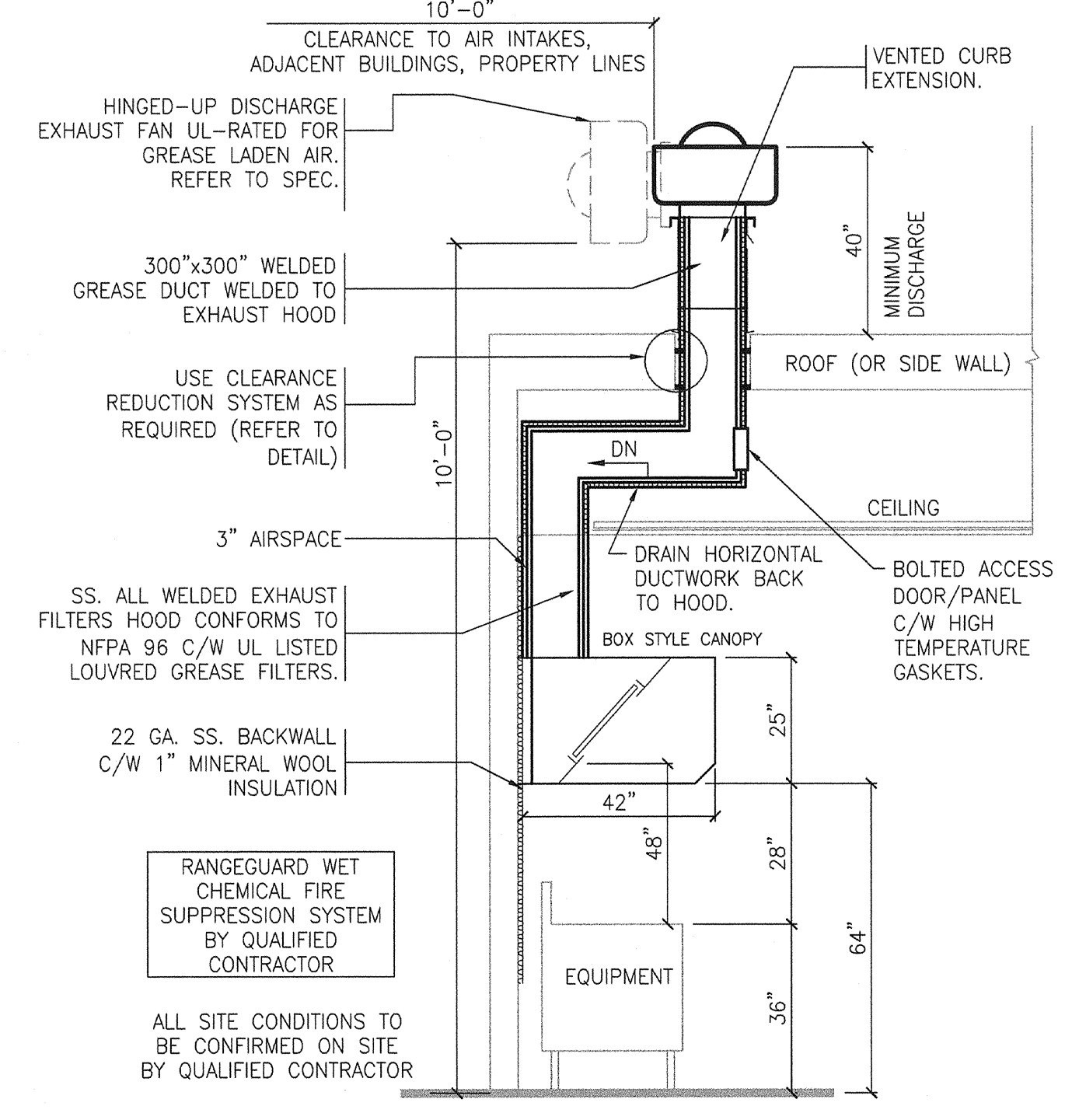


NOTE NO. 1: CONTRACTORS MUST BE COMPLETELY FAMILIAR WITH AND INSTALLATION MUST CONFORM TO - NFPA 96 AND ALL LOCAL CODES, ESPECIALLY IN REGARD TO, BUT NOT LIMITED TO:
 A) DEFINITIONS OF COMBUSTIBLE, LIMITED COMBUSTIBLE AND NON-COMBUSTIBLE.
 B) INSTALLATION OF DUCTWORK TO PREVENT DIPS AND TRAPS THAT MIGHT COLLECT RESIDUE.
 C) LOCATION AND FABRICATION OF DUCT ACCESS DOORS.
 D) ACCEPTABLE DUCT MATERIALS AND WELDING TECHNIQUES.
 E) SPACING OF FAN OUTLETS TO BUILDINGS, PROPERTY LINES AND AIR INTAKES.
 F) ACCEPTABLE CLEARANCE REDUCTIONS TO COMBUSTIBLE AND LIMITED COMBUSTIBLE MATERIAL.
NOTE NO. 2: MAINTAIN MINIMUM
 - 0mm (0") CLEARANCE TO NON-COMBUSTIBLES
 - 75mm (3") CLEARANCE TO LIMITED COMBUSTIBLES
 - 450mm (18") CLEARANCE TO COMBUSTIBLES
 REDUCTIONS MAY BE POSSIBLE AS PER NFPA 96

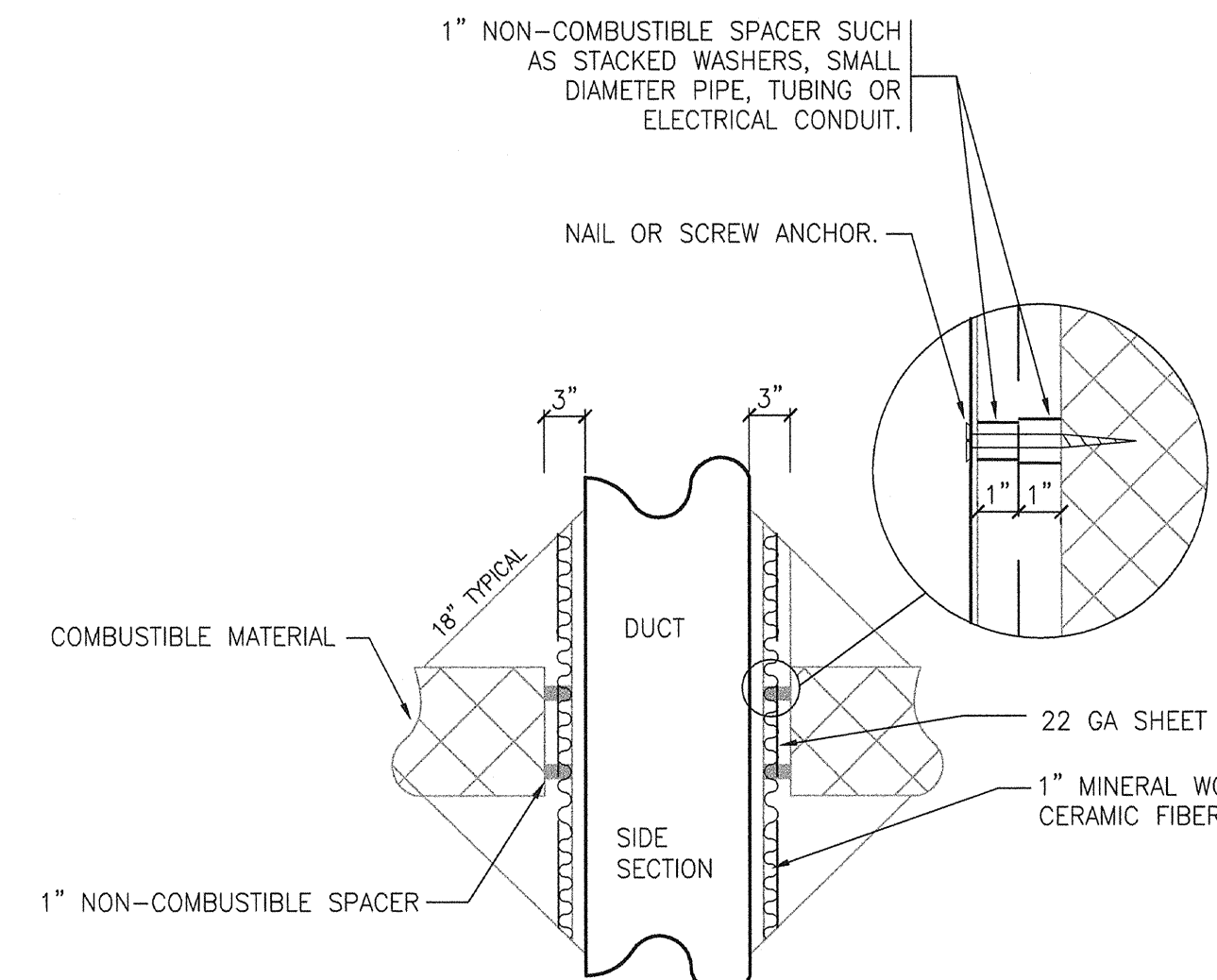
NOTES:
 - ALL DIMENSIONS, SITE CONDITIONS AND EQUIPMENT SPECIFICATIONS TO BE CONFIRMED BY GENERAL CONTRACTOR / EQUIPMENT SUPPLIERS PRIOR TO COMMENCING CONSTRUCTION / FABRICATION
 - ALL BUILDING / FIRE / HEALTH CODE APPROVALS MUST BE OBTAINED PRIOR TO COMMENCING CONSTRUCTION



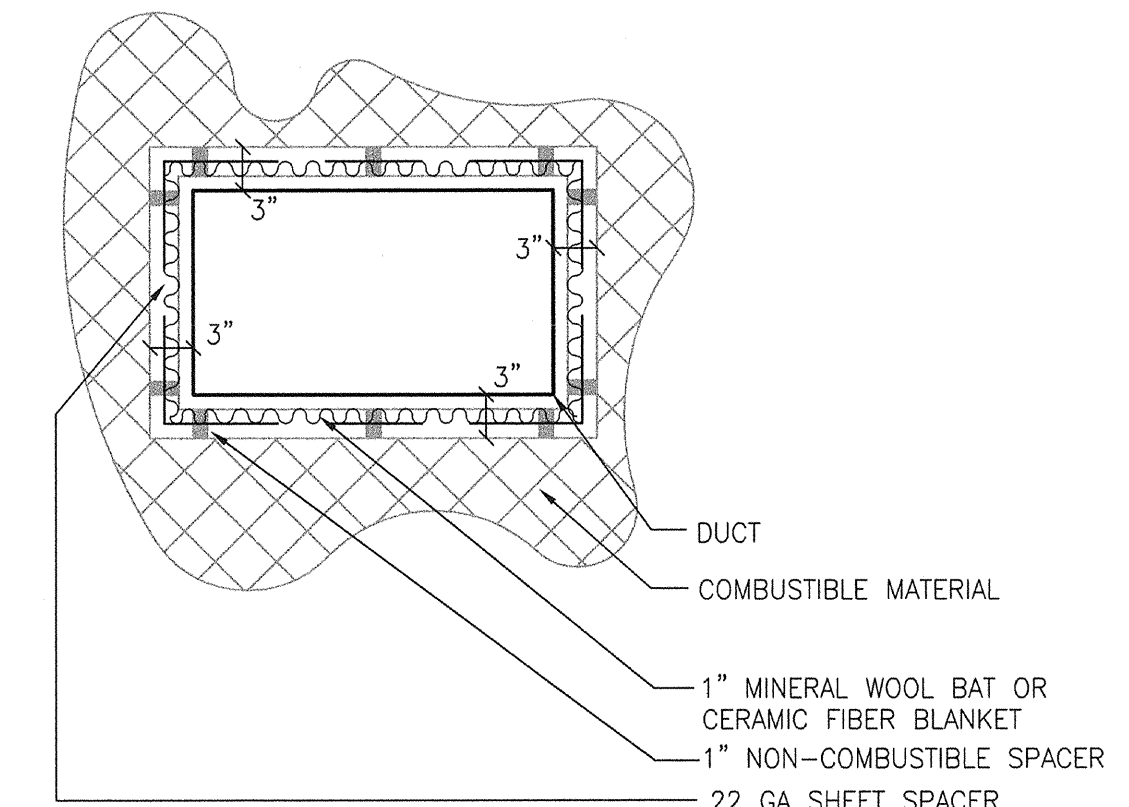
PLAN-EXHAUST CANOPY
SCALE: N.T.S.



CANOPY/EXHAUST EQUIPMENT SECTION
SCALE: N.T.S.

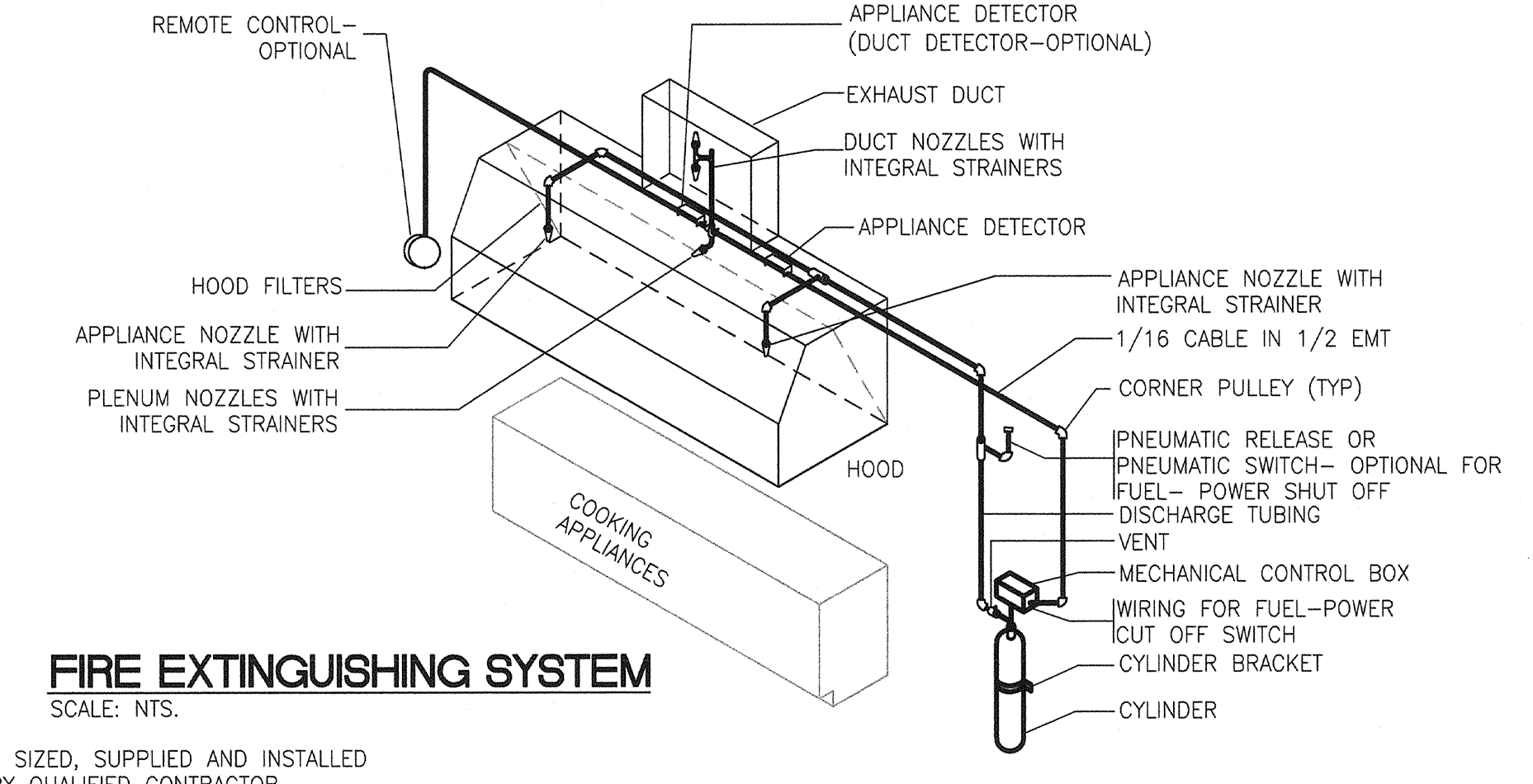


CLEARANCE REDUCTION SYSTEM
SCALE: N.T.S.



GENERAL NOTES

1. THE CONTRACTOR SHALL VERIFY ALL DIMENSIONS, CONDITIONS AND PERTINENT INFORMATION ON SITE, AND NOTIFY THE CONTRACT ADMINISTRATOR OF ANY DISCREPANCIES THAT WILL PREVENT THE INSTALLATION OF THE SYSTEMS AS OUTLINED, PRIOR TO PROCEEDING WITH JOB.
2. NO MODIFICATION TO WORK SHALL BE DONE THAT WILL PREVENT THE INSTALLATION OF THE SYSTEMS SO OUTLINED, CARRIED OUT WITHOUT WRITTEN PERMISSION FROM THE CONTRACT ADMINISTRATOR.
3. ALL SUB-TRADES SHALL CONFIRM FINAL DATA WITH KITCHEN EQUIPMENT CONTRACTOR PRIOR TO COMMENCING WORK.
4. KITCHEN VENTILATION DESIGN BASED ON NFPA 96-2001 WITH MINIMUM EXHAUST AIR VELOCITY OF 500 fpm.

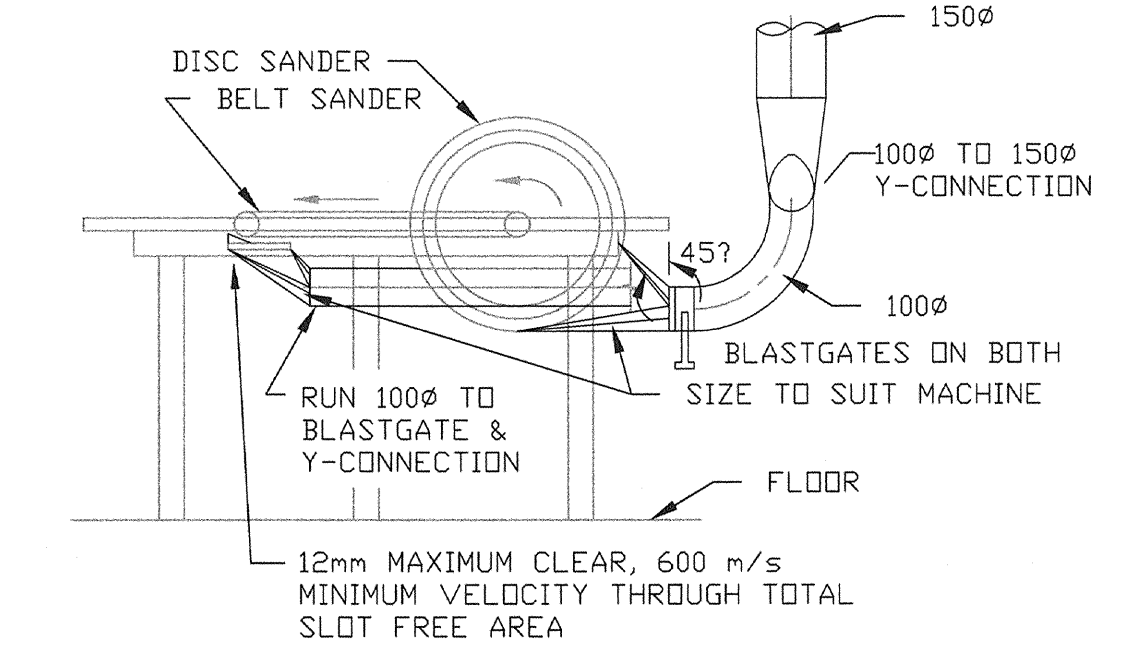


FIRE EXTINGUISHING SYSTEM
SCALE: N.T.S.

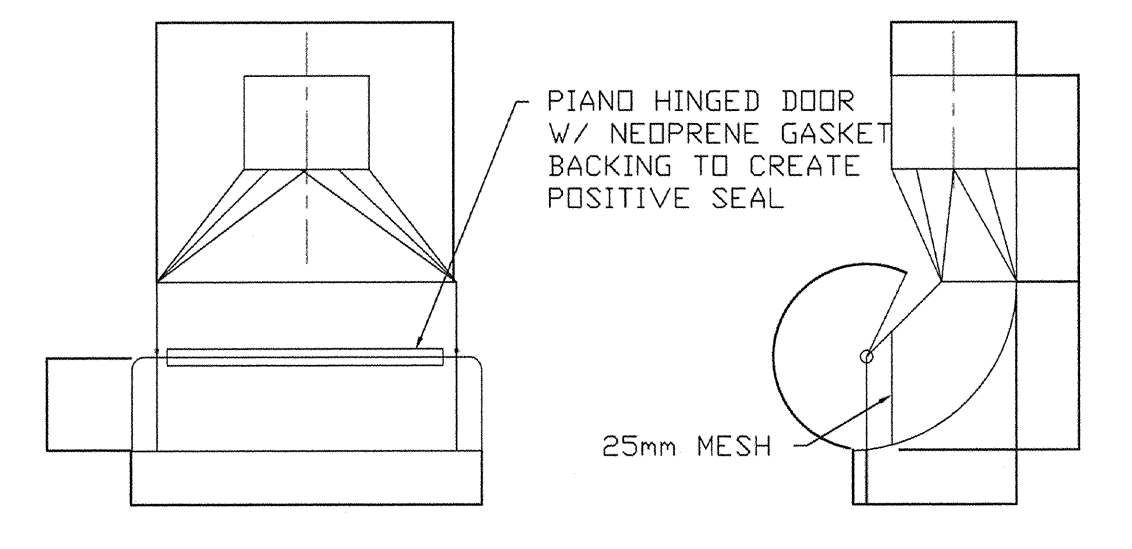
* SIZED, SUPPLIED AND INSTALLED BY QUALIFIED CONTRACTOR.

GENERAL NOTES

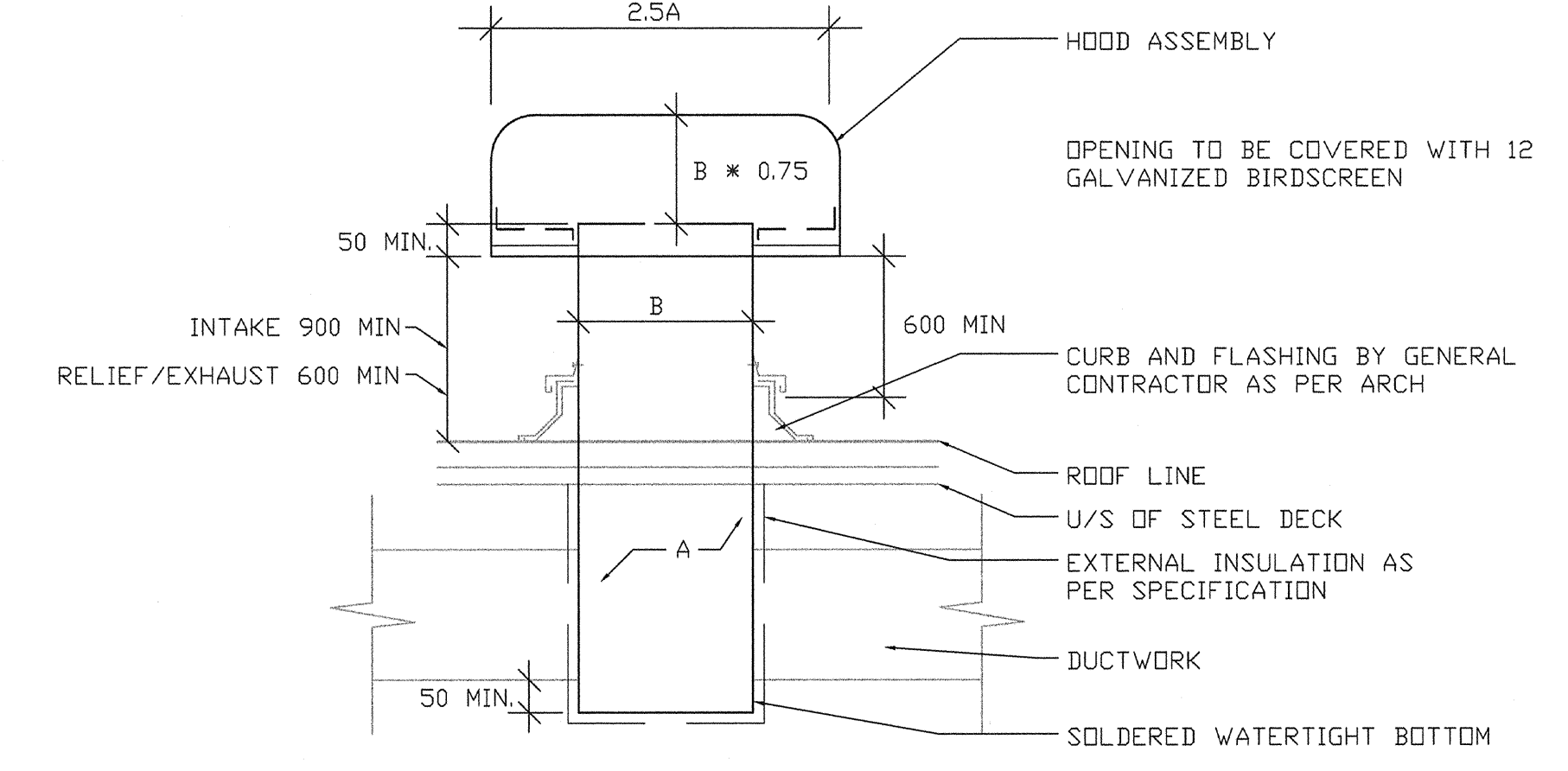
- CONTRACTORS MUST BE COMPLETELY FAMILIAR WITH AND INSTALLATION MUST CONFORM TO NFPA 96 AND ALL LOCAL CODES, ESPECIALLY IN REGARD TO, BUT NOT LIMITED TO:
- A) DEFINITIONS OF COMBUSTIBLE, LIMITED COMBUSTIBLE AND NON-COMBUSTIBLE.
 - B) INSTALLATION OF DUCTWORK TO PREVENT DIPS AND TRAPS THAT MIGHT COLLECT RESIDUE.
 - C) LOCATION AND FABRICATION OF DUCT ACCESS DOORS.
 - D) ACCEPTABLE DUCT MATERIALS AND WELDING TECHNIQUES.
 - E) SPACING OF FAN OUTLETS TO BUILDINGS, PROPERTY LINES AND AIR INTAKES.
 - F) ACCEPTABLE CLEARANCE REDUCTIONS TO COMBUSTIBLE AND LIMITED COMBUSTIBLE MATERIAL:
 - 0" CLEARANCE TO NON-COMBUSTIBLES
 - 3" CLEARANCE TO LIMITED COMBUSTIBLES
 - 18" CLEARANCE TO COMBUSTIBLES
 REDUCTIONS MAY BE POSSIBLE AS PER NFPA 96.
1. A MECHANICAL GAS SHUT-OFF VALVE SHALL BE GIVEN TO THE TRADE RESPONSIBLE FOR THE GAS PIPING TO THE COOKING APPLIANCES, AND ITS LOCATION SHALL BE CO-ORDINATED WITH HIM.
 2. WHEN THE FIRE EXTINGUISHING SYSTEM OPERATES AS A RESULT OF THE MELTING OF A FUSIBLE LINK OR ACTUATION OF THE REMOTE MANUAL CONTROL, A PRESSURE OPERATED DEVICE SHALL SHUT OFF THE FLOW OF GAS TO THE COOKING EQUIPMENT.
 3. A CONTACT IN THE MECHANICAL CONTROL BOX SHALL INITIATE THE FIRE ALARM SYSTEM IN THE BUILDING (IF PRESENT). (WIRING OF CONTACT IS BY OTHERS)
 4. UPON COMPLETION OF INSTALLATION, ALL TESTS NECESSARY TO FULFIL REQUIREMENTS OF THE CODE AUTHORITY SHALL BE PERFORMED, AND THE CONTRACT ADMINISTRATOR SHALL BE PROVIDED WITH A COPY OF THE SIGNED CERTIFICATION FOR APPROVAL.



DISC / BELT SANDER EXHAUST DETAIL
SCALE: N.T.S.



FLOOR SWEEP EXHAUST DETAIL
SCALE: N.T.S.



NOTE
 A = AREA OF DUCT
 B = SHORT DUCT DIMENSION

TYPICAL MUSHROOM STYLE INTAKE RELIEF OR EXHAUST AIR HOOD DETAIL
SCALE: N.T.S.

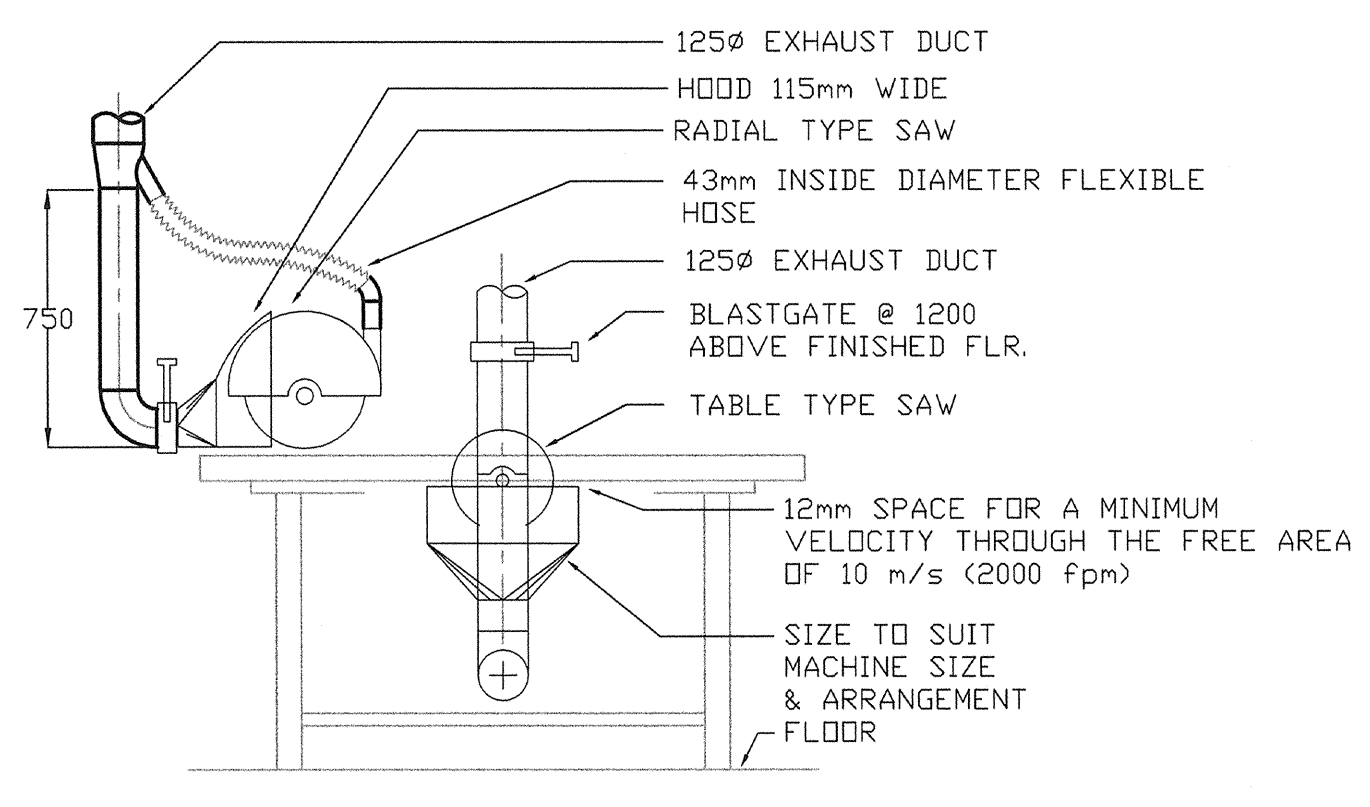
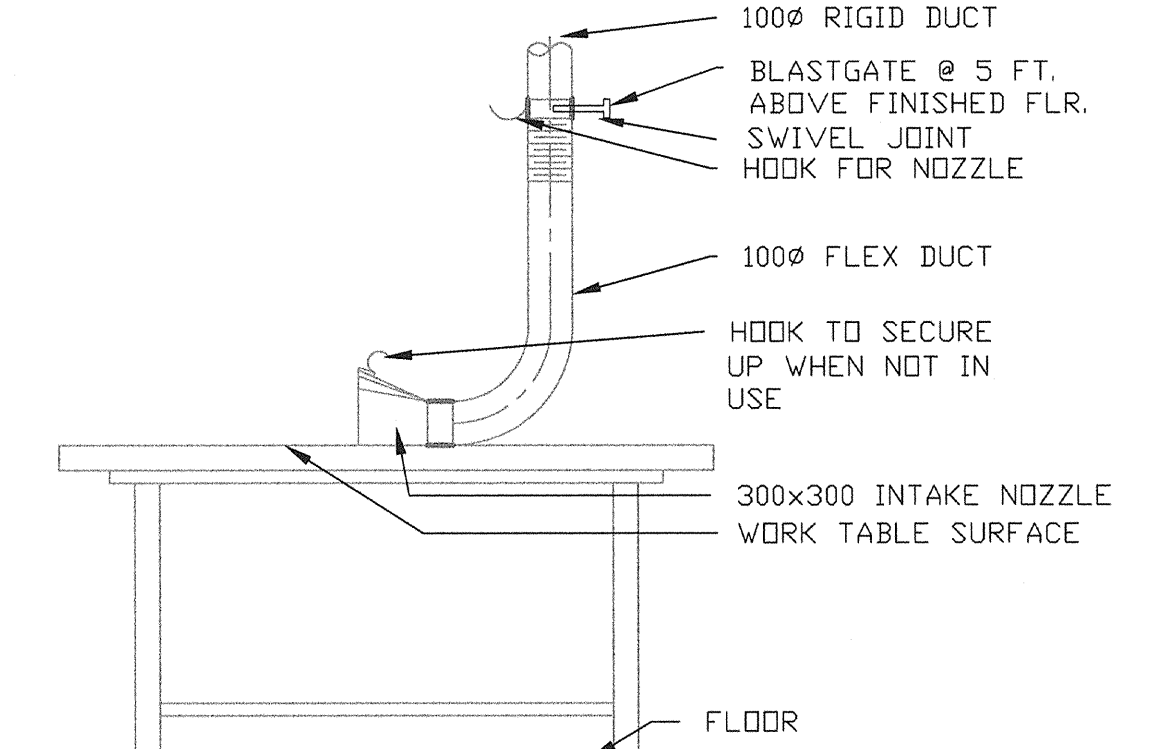


TABLE / RADIAL / MITER SAW EXHAUST DETAIL
SCALE: N.T.S.



WORK TABLE EXHAUST DETAIL
SCALE: N.T.S.

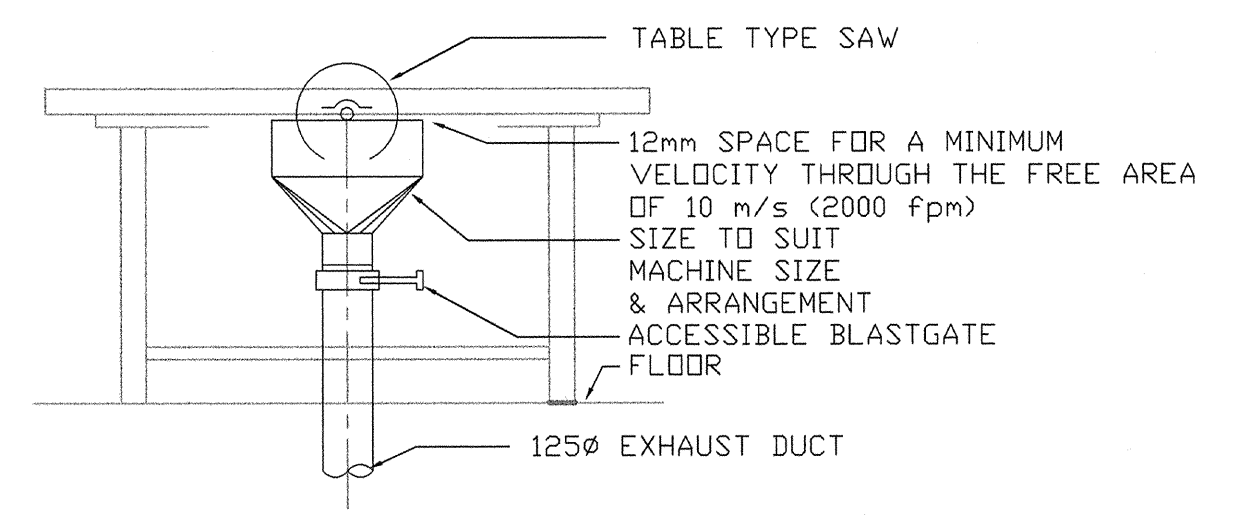
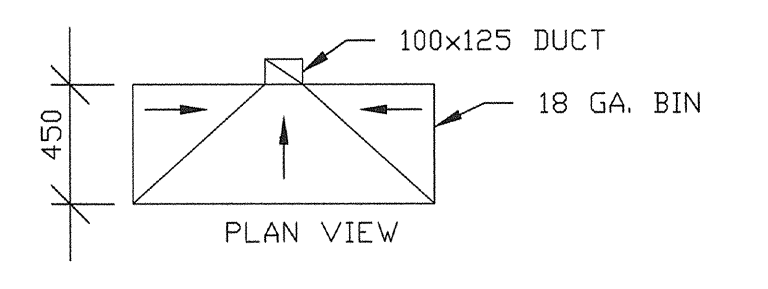
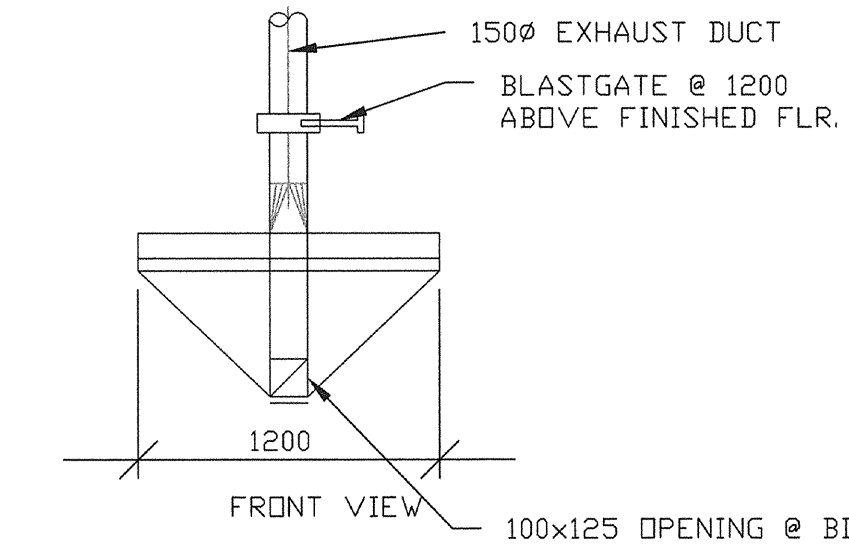
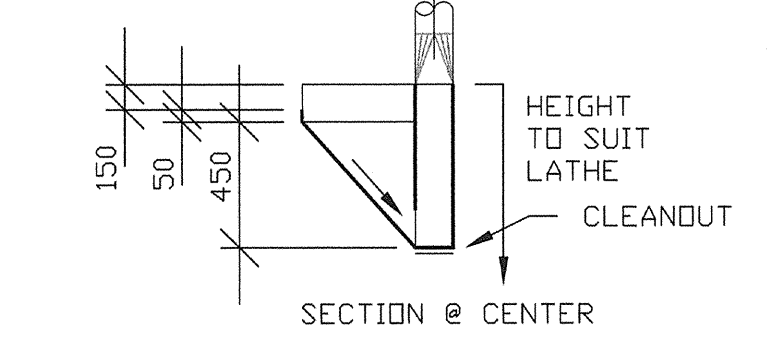
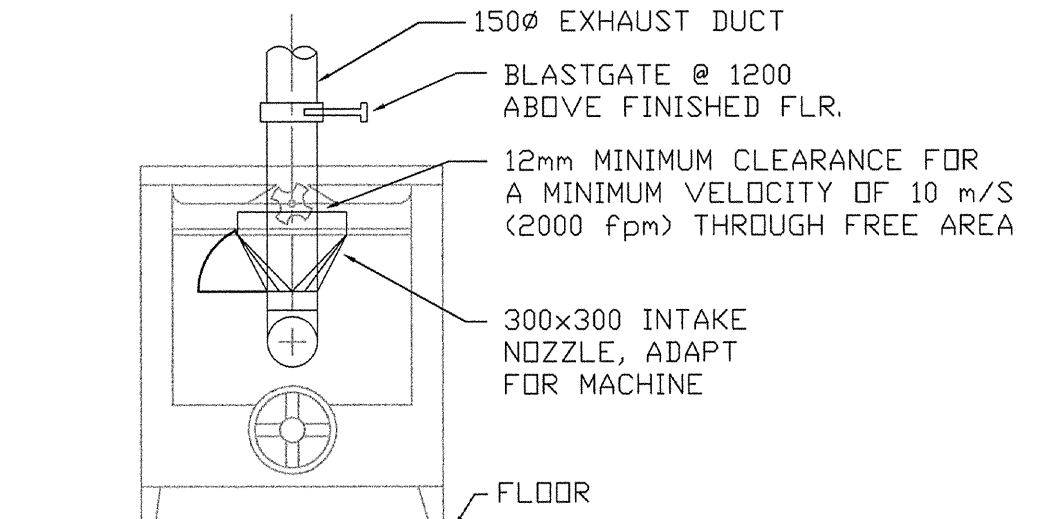


TABLE SAW EXHAUST DETAIL
SCALE: N.T.S.



SAWDUST COLLECTION BIN AT WOOD LATHE DETAIL
SCALE: N.T.S.



PLANER / JOINTER EXHAUST DETAIL
SCALE: N.T.S.

NOTES:
 THIS DRAWING MUST NOT BE SCALED.
 THE CONTRACTOR SHALL VERIFY ALL DIMENSIONS, DATA, AND LEVELS PRIOR TO COMMENCEMENT OF WORK. ALL ERRORS AND OMISSIONS TO BE REPORTED TO THE CONTRACT ADMINISTRATOR BEFORE PROCEEDING.
 VARIATIONS AND MODIFICATIONS TO WORK SHOWN ON THESE DRAWINGS SHALL NOT BE CARRIED OUT WITHOUT WRITTEN PERMISSION OF THE CONTRACT ADMINISTRATOR.
 THIS DRAWING IS THE EXCLUSIVE PROPERTY OF NUMBER TEN ARCHITECTURAL GROUP AND THE CONTRACTOR IN THE SAME MANNER REFERRED TO THEM. IT MAY BE REPRODUCED ONLY WITH THE PERMISSION OF THE CITY OF WINNIPEG.

TOWER PROJECT NO.: 6150
TOWER ENGINEERING GROUP
 208 - 257 CORTON AVE. WINNIPEG, MB R3M 0W7
 TEL: (204) 925-1150 FAX: (204) 925-1155
 EMAIL: towereng@towereng.ca WEB: www.towereng.ca

numberTEN architectural group
 number 10
 architecture • interior design • graphic design

NO.	REVISION / ISSUED / PLOTTED	DATE
▲	DESIGN DEVELOPMENT SUBMISSION	31/AUG/07
▲	ISSUED FOR 40% REVIEW	28/OCT/07
▲	ISSUED FOR 80% REVIEW	07/DEC/07
▲	ISSUED FOR 100% REVIEW	11/JAN/08
▲	ISSUED FOR TENDER	18/JAN/08

NO.	REVISION/DESCRIPTION	BY	DATE

PROVINCE OF MANITOBA
J. ABIUSI
 Jan 18/08
 REGISTERED PROFESSIONAL ENGINEER
APEGM
 Certificate of Authorization
 Tower Engineering Group
 No. 1918 Expiry: April 30, 2008

DRAWN BY	LR	CHECKED BY	CO	APPROVED
DATE	2007.11.12	USER	APPROVAL	

CITY OF WINNIPEG
 WINNIPEG
 PLANNING, PROPERTY AND DEVELOPMENT DEPARTMENT
 CIVIC ACCOMMODATIONS DIVISION
 300 - 65 GARRY ST. R3C 4K4

PROJECT
 BRONX PARK COMMUNITY CENTRE
 HOME OF GOOD NEIGHBOURS SENIOR CENTRE
 WINNIPEG, MB
 SHEET TITLE
 MECHANICAL VENTILATION
 DETAILS & SCHEMATICS

SCALE	PROJECT NO.	SHEET NO.
AS SHOWN	PP&D 2006-065	M-3.4

DRAWING SHEET SIZE: ARCH E1 (42" x 30") PLOT 1:1