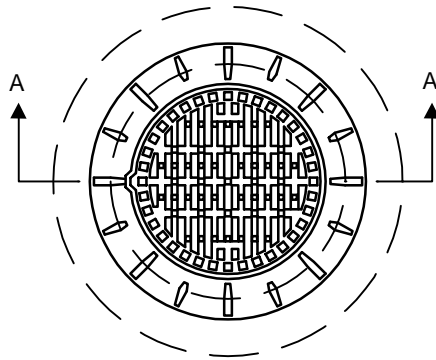


NOTE: EACH CATCH BASIN TO HAVE SEPARATE CONNECTION TO SEWER OR MANHOLE

USE PREFORMED BITUMINOUS GASKET BETWEEN REDUCER AND BARREL SECTION



STANDARD FRAME (AP-004)
AND STANDARD GRATED
COVER (AP-006)

PLAN

FINISHED BOULEVARD GRADE

MAXIMUM 2 - 750Ø PRECAST
CONCRETE ADJUSTING RINGS

900 DIA. x 750 DIA. PRECAST
CONCRETE REDUCER

900 DIA. PRECAST CONCRETE
CATCH BASIN BARREL TO
ASTM C 478 AND C 76 CL II

INITIAL BACKFILL IN ACCORDANCE
WITH CW 2030 AND SD-001

APPROVED CATCH BASIN
HOOD

MINIMUM 250 DIA. CATCH BASIN
LEAD TO SEWER OR MANHOLE

BEDDING IN ACCORDANCE
WITH CW 2030 AND SD-001

PRECAST CONCRETE
BASE

19 DIA. RUNGS
AT 300 O.C.

SPECIFIED BACKFILL
IN ACCORDANCE WITH
CW 2030 AND SD-002

100
MIN.
200

1800

600

100

SECTION A - A

DIMENSIONS IN MILLIMETERS



THE CITY OF WINNIPEG
WATER & WASTE DEPARTMENT

Reference Spec. No.

CW 2030 CW 2130

STANDARD PRE-CAST
CONCRETE CATCH BASIN
IN BOULEVARD

Designed By:
LSWL / TW

Drawn By:
BH

Scale:
N.T.S.

Checked By:
TW

Date: 05-02-22
Revision: 1

Drawing No.

Approved:
UNDERGROUND WORKS COMMITTEE

SD-025