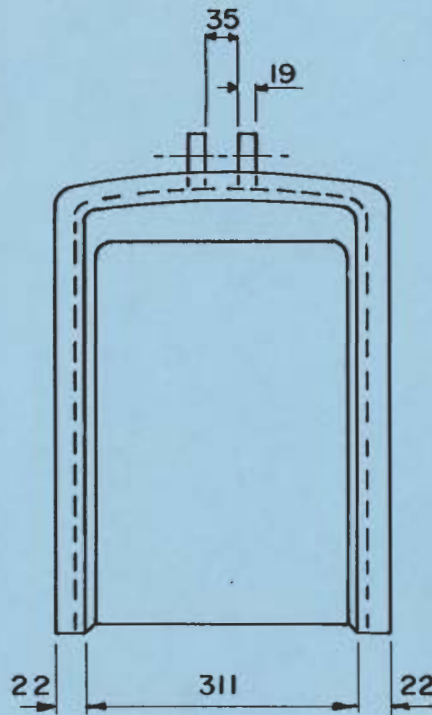
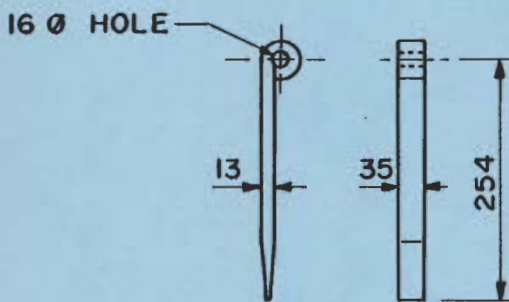


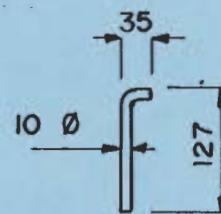
SECTION A-A



A



HINGE



HINGE PIN

DIMENSIONS IN MILLIMETRES

The City Of Winnipeg
Works & Operations Division

Reference Spec. No. CW2131
CW3205

CATCHBASIN HOOD

Designed By:
GFN

Drawn By:
EN

Scale:
NTS

Checked By:
RAS

Date:
MARCH 1986

Drawing No.

Approved
R. A. Srochowski

SD - 110