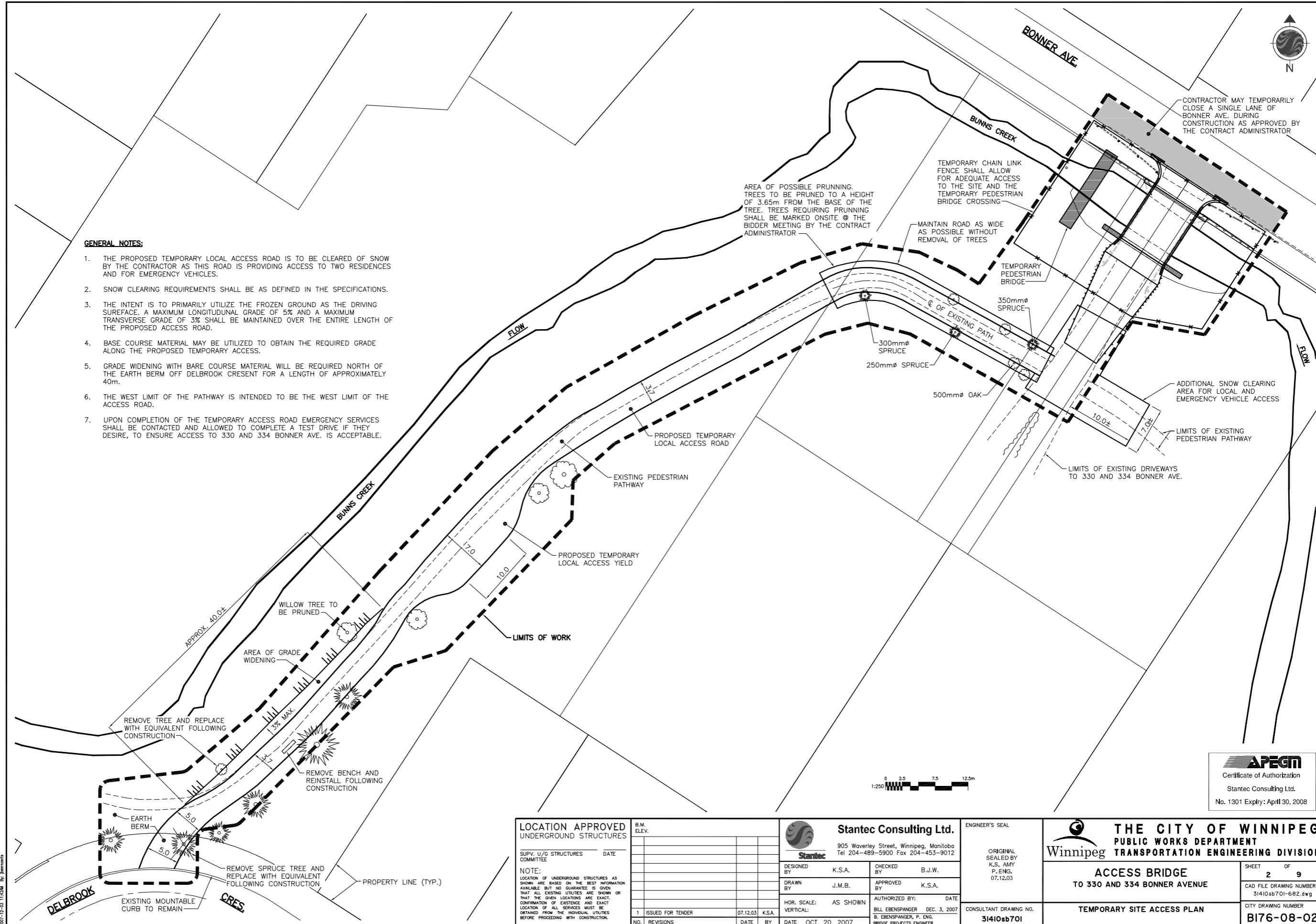




GENERAL NOTES:

1. THE PROPOSED TEMPORARY LOCAL ACCESS ROAD IS TO BE CLEARED OF SNOW BY THE CONTRACTOR AS THIS ROAD IS PROVIDING ACCESS TO TWO RESIDENCES AND FOR EMERGENCY VEHICLES.
2. SNOW CLEARING REQUIREMENTS SHALL BE AS DEFINED IN THE SPECIFICATIONS.
3. THE INTENT IS TO PRIMARILY UTILIZE THE FROZEN GROUND AS THE DRIVING SURFACE. A MAXIMUM LONGITUDINAL GRADE OF 5% AND A MAXIMUM TRANSVERSE GRADE OF 3% SHALL BE MAINTAINED OVER THE ENTIRE LENGTH OF THE PROPOSED ACCESS ROAD.
4. BASE COURSE MATERIAL MAY BE UTILIZED TO OBTAIN THE REQUIRED GRADE ALONG THE PROPOSED TEMPORARY ACCESS.
5. GRADE WIDENING WITH BARE COURSE MATERIAL WILL BE REQUIRED NORTH OF THE EARTH BERM OFF DELBROOK CRESENT FOR A LENGTH OF APPROXIMATELY 40m.
6. THE WEST LIMIT OF THE PATHWAY IS INTENDED TO BE THE WEST LIMIT OF THE ACCESS ROAD.
7. UPON COMPLETION OF THE TEMPORARY ACCESS ROAD EMERGENCY SERVICES SHALL BE CONTACTED AND ALLOWED TO COMPLETE A TEST DRIVE IF THEY DESIRE, TO ENSURE ACCESS TO 330 AND 334 BONNER AVE. IS ACCEPTABLE.



APEGM
 Certificate of Authorization
 Stantec Consulting Ltd.
 No. 1301 Expiry: April 30, 2008



| LOCATION APPROVED UNDERGROUND STRUCTURES | | B.M. ELEV. |
|--|-------------------|-----------------|
| SUPV. U/G STRUCTURES COMMITTEE | DATE | |
| | | |
| NOTE: LOCATION OF UNDERGROUND STRUCTURES AS SHOWN ARE BASED ON THE BEST INFORMATION AVAILABLE BUT NO GUARANTEE IS GIVEN THAT ALL EXISTING UTILITIES ARE SHOWN OR THAT THE GIVEN LOCATIONS ARE EXACT. CONFIRMATION OF EXISTENCE AND EXACT LOCATION OF ALL SERVICES MUST BE OBTAINED FROM THE INDIVIDUAL UTILITIES BEFORE PROCEEDING WITH CONSTRUCTION. | | |
| 1 | ISSUED FOR TENDER | 07.12.03 K.S.A. |
| NO. | REVISIONS | DATE BY |

Stantec Consulting Ltd.
 905 Waverley Street, Winnipeg, Manitoba
 Tel 204-489-5900 Fax 204-453-9012

DESIGNED BY: K.S.A. CHECKED BY: B.J.W.
 DRAWN BY: J.M.B. APPROVED BY: K.S.A.

AUTHORIZED BY: DATE
 BILL EBENSCHER DEC. 3, 2007
 B. EBENSCHER, P. ENG.
 BRIDGE PROJECTS ENGINEER

ENGINEER'S SEAL

ORIGINAL SEALED BY
 K.S. AMY
 P. ENG.
 07.12.03

THE CITY OF WINNIPEG
 PUBLIC WORKS DEPARTMENT
 TRANSPORTATION ENGINEERING DIVISION

ACCESS BRIDGE
 TO 330 AND 334 BONNER AVENUE

TEMPORARY SITE ACCESS PLAN

SHEET **2** OF **9**
 CAD FILE DRAWING NUMBER
 31410sb701-682.dwg
 CITY DRAWING NUMBER
B176-08-02

CONSULTANT DRAWING NO.
31410sb701

I:\Projects\111201106\111201106.dwg
 2007-12-20 11:18:20
 111201106.dwg
 11/20/07 11:18:20