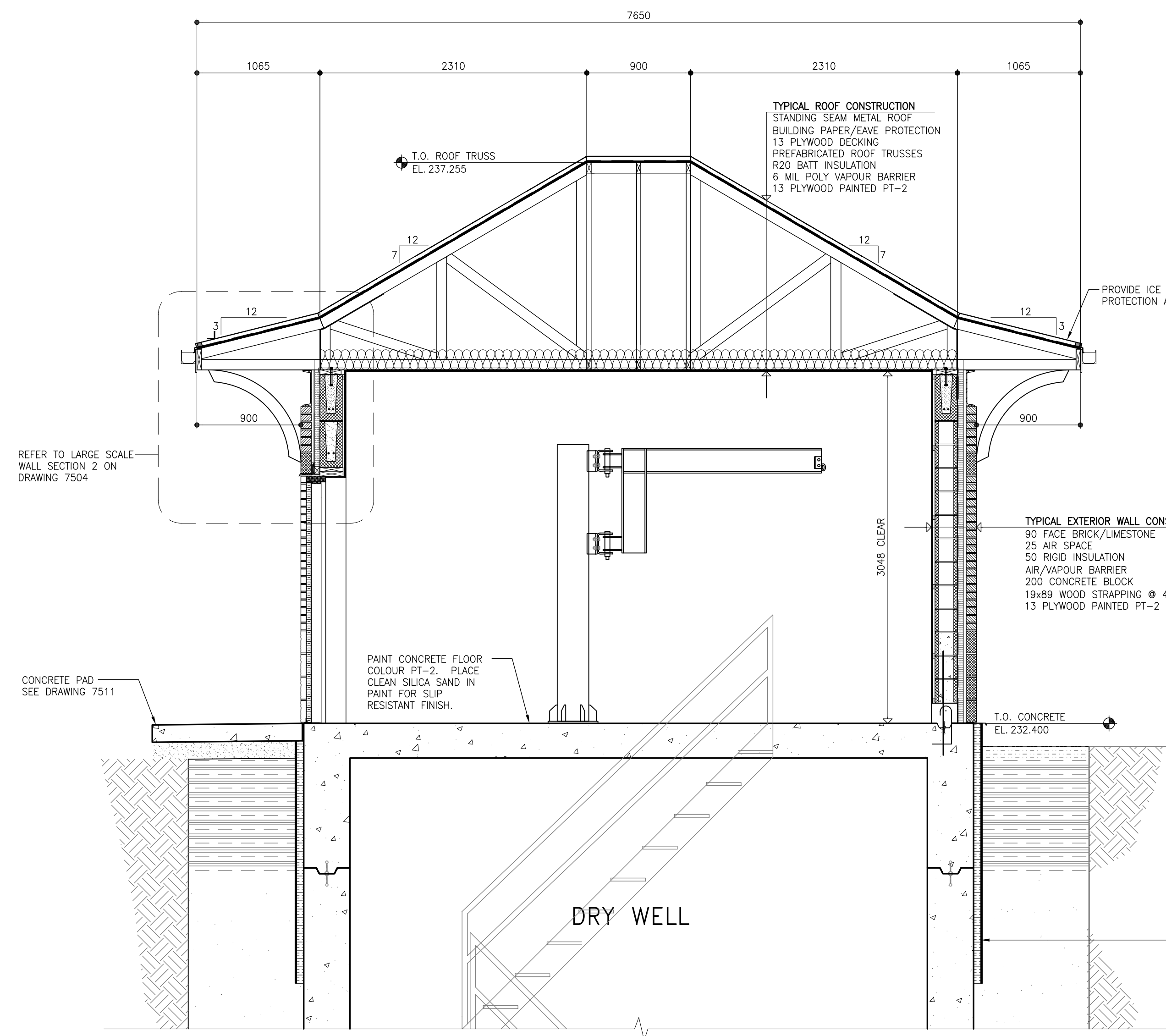
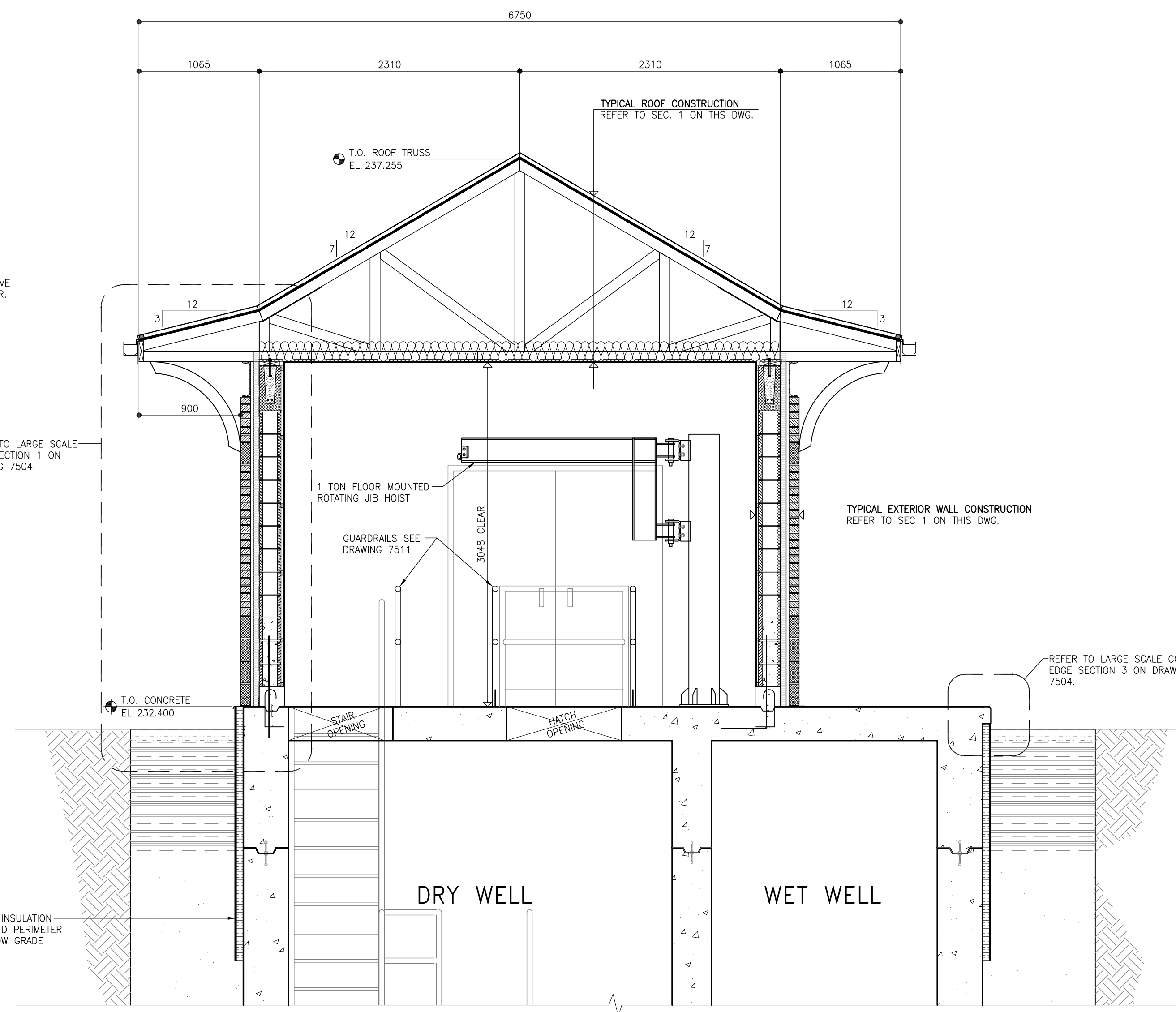


**ELEVATION KEY NOTES**

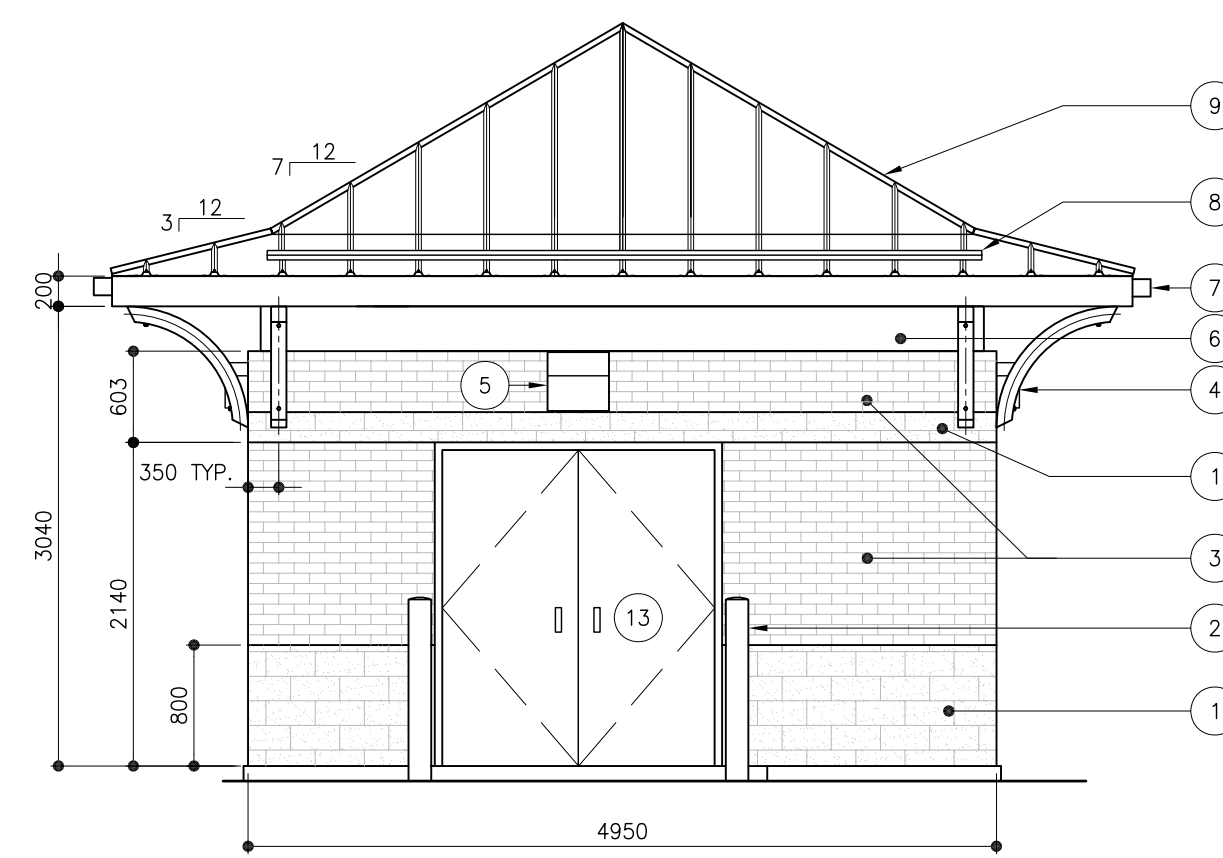
- ① LIMESTONE VENEER
- ② 150 DIAMETER REMOVABLE STEEL BOLLARD, REFER TO DETAIL 1 ON DRAWING 7502. PAINT COLOR PT-3.
- ③ MASONRY VENEER
- ④ CURVED HSS BRACKET REFER TO DETAIL 2 ON DRAWING 7502. PAINT COLOR PT-1.
- ⑤ LIGHT FIXTURE, SEE DRAWING 7505
- ⑥ STEEL CHANNEL REVEAL, PAINT COLOR PT-1.
- ⑦ PRE-FINISHED METAL GUTTER
- ⑧ ICE/SNOW FENCE - COLOUR TO MATCH ROOF PANELS
- ⑨ PRE-FINISHED METAL ROOF
- ⑩ SLOPED CONCRETE RAMP
- ⑪ CONCRETE SPLASH PAD, REFER TO LANDSCAPE DRAWINGS.
- ⑫ PRE-FINISHED METAL DOWNSPOUT
- ⑬ INSULATED METAL DOOR AND FRAME PAINT COLOR PT-1.



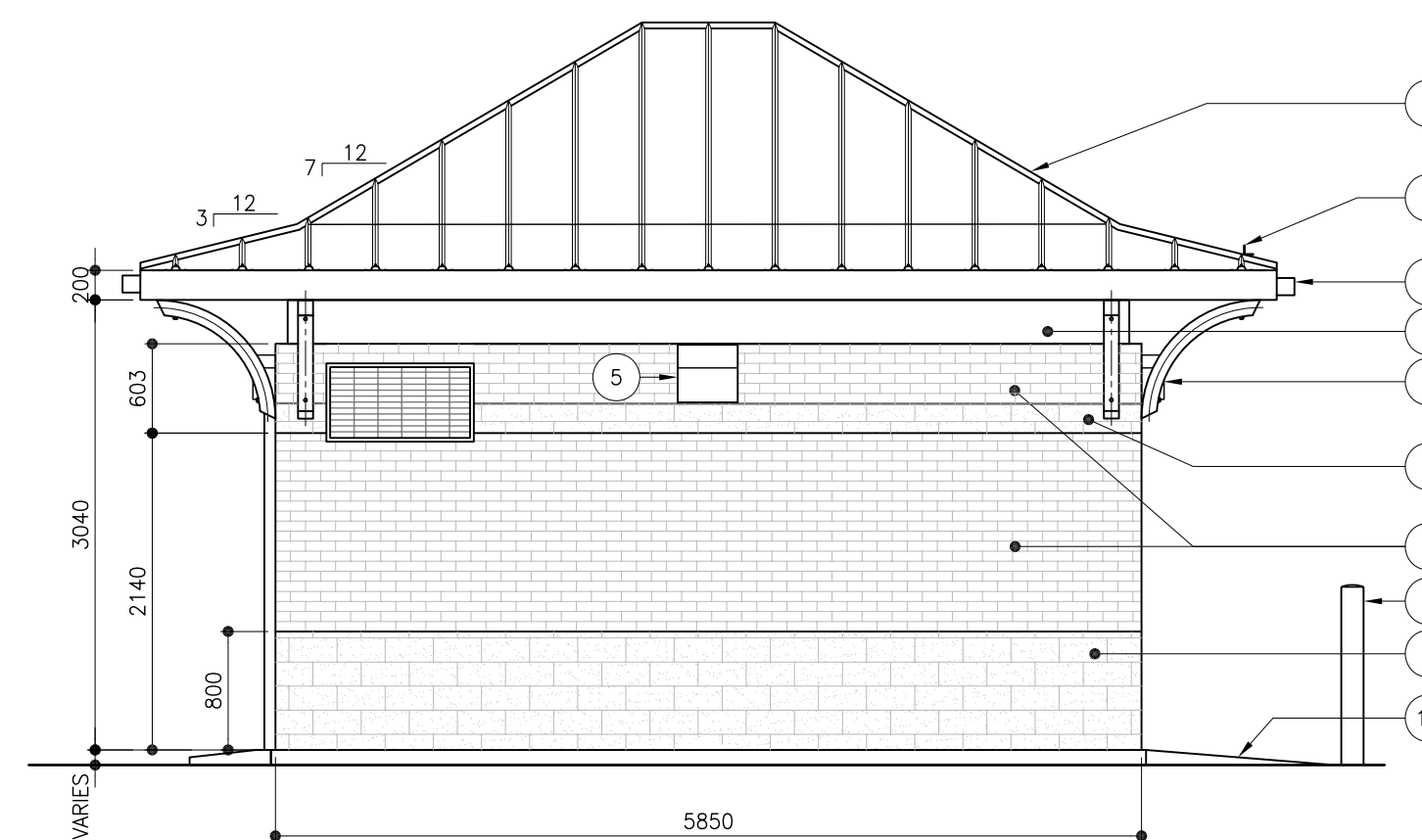
**1 BUILDING SECTION**  
B03 1:30



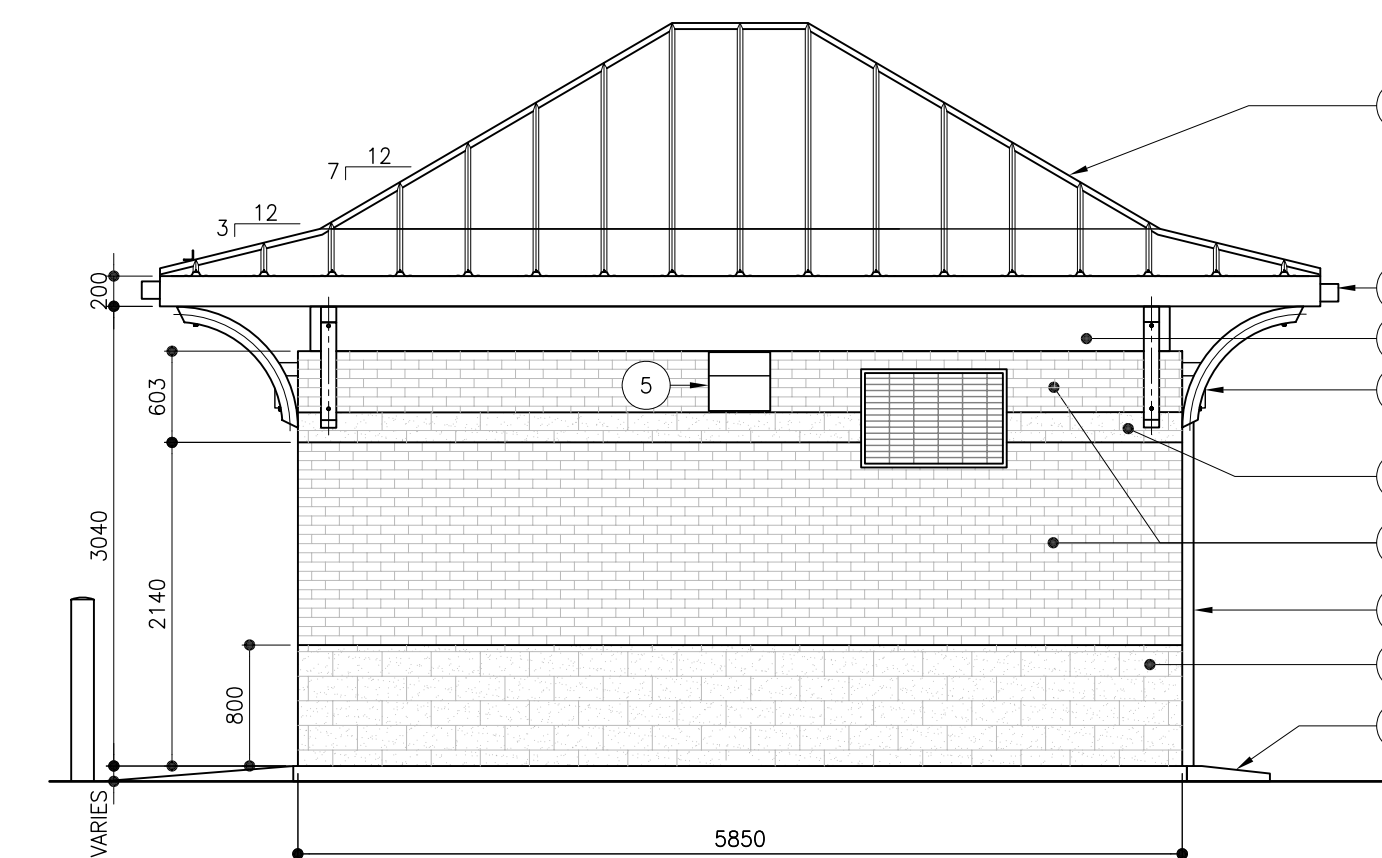
**2 BUILDING SECTION**  
B03 1:30



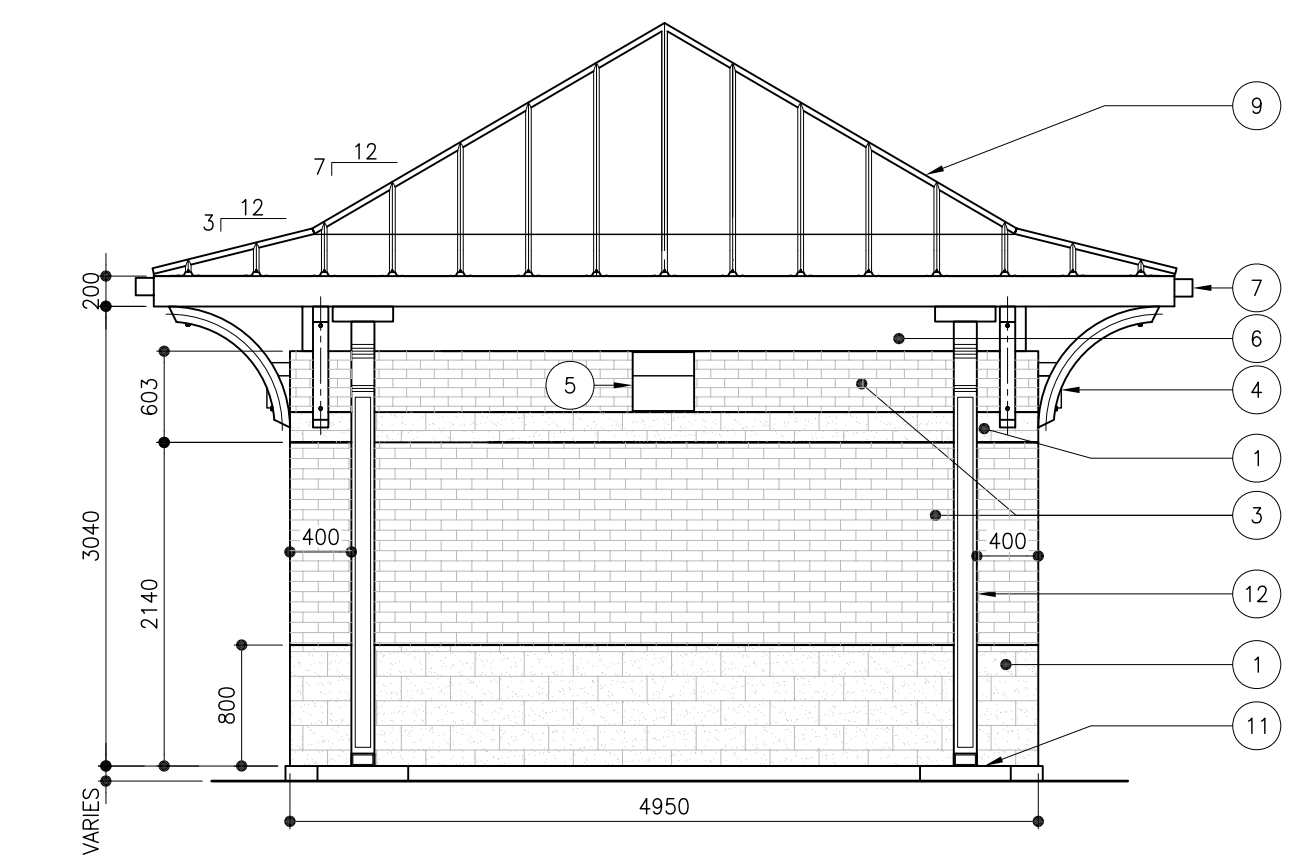
**3 WEST ELEVATION**  
B03 1:50



**4 NORTH ELEVATION**  
B03 1:50



**5 SOUTH ELEVATION**  
B03 1:50



**6 EAST ELEVATION**  
B03 1:50

**METRIC**  
WHOLE NUMBERS INDICATE MILLIMETRES  
DECIMALIZED NUMBERS INDICATE METRES

<p>Accutech Engineering Inc. Tomorrow's Technology Today 605-287 Broadway, Winnipeg, Manitoba Canada R3C-0R9 Phone (204) 944-1555 Fax (204) 944-1444 www.accutech.org.ca</p>			<p>ENGINEER'S SEAL</p> <p>ORIGINAL SIGNED BY <b>K.R. DRYSDALE</b> 08/02/11</p>		<p>THE CITY OF WINNIPEG WATER AND WASTE DEPARTMENT</p> <p>DUGALD ROAD WASTEWATER PUMPING STATION BUILDING ELEVATIONS AND SECTIONS</p>		<p>CONSULTANT DRAWING NUMBER <b>B03</b></p> <p>SHEET <b>4</b> OF <b>14</b></p> <p>CITY DRAWING NUMBER <b>7503</b></p>	
DESIGNED BY	PG	CHECKED BY	PG	<p>HOR. SCALE VERTICAL</p> <p>AS SHOWN</p>	<p>RELEASED FOR CONSTRUCTION</p> <p>SIGNED BY K. ZUREK</p>	<p>BID OPPORTUNITY 892-2007 PLOT DATE:</p>		
DRAWN BY	RK	APPROVED BY	KD			DATE	08/02/13	
5 ISSUED FOR TENDER	FEB 11 08	PG						
4 ISSUED FOR REVIEW 100%	JAN 25 08	PG						
3 ISSUED FOR REVIEW 99%	DEC 14 07	PG						
2 ISSUED FOR REVIEW 75%	SEP 11 07	RK						
1 ISSUED FOR REVIEW	JUN 29 07	CVL						
NO. REVISIONS	DATE	BY	DATE					