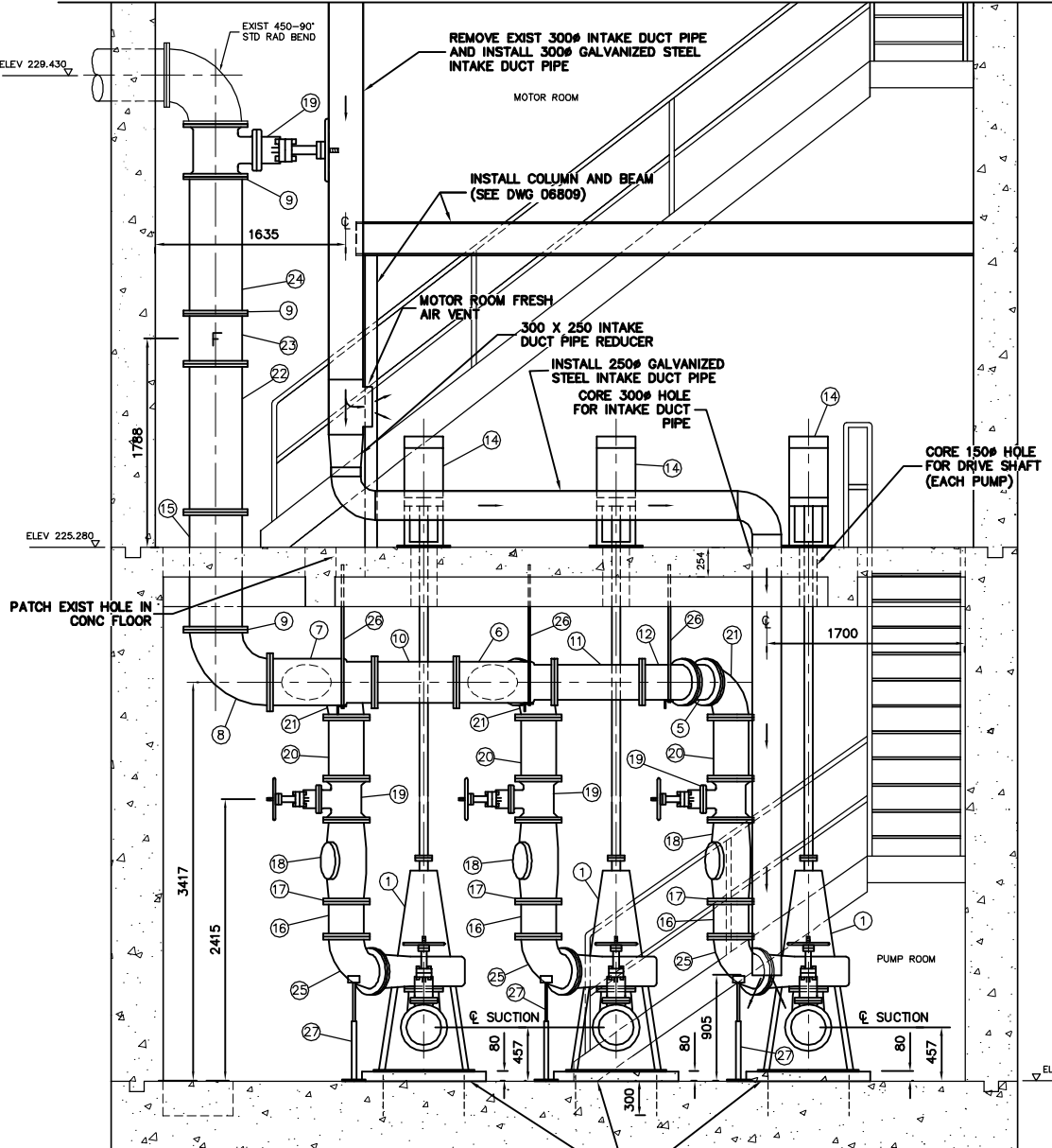


**PIPE HANGER DETAIL**  
SCALE 1:10

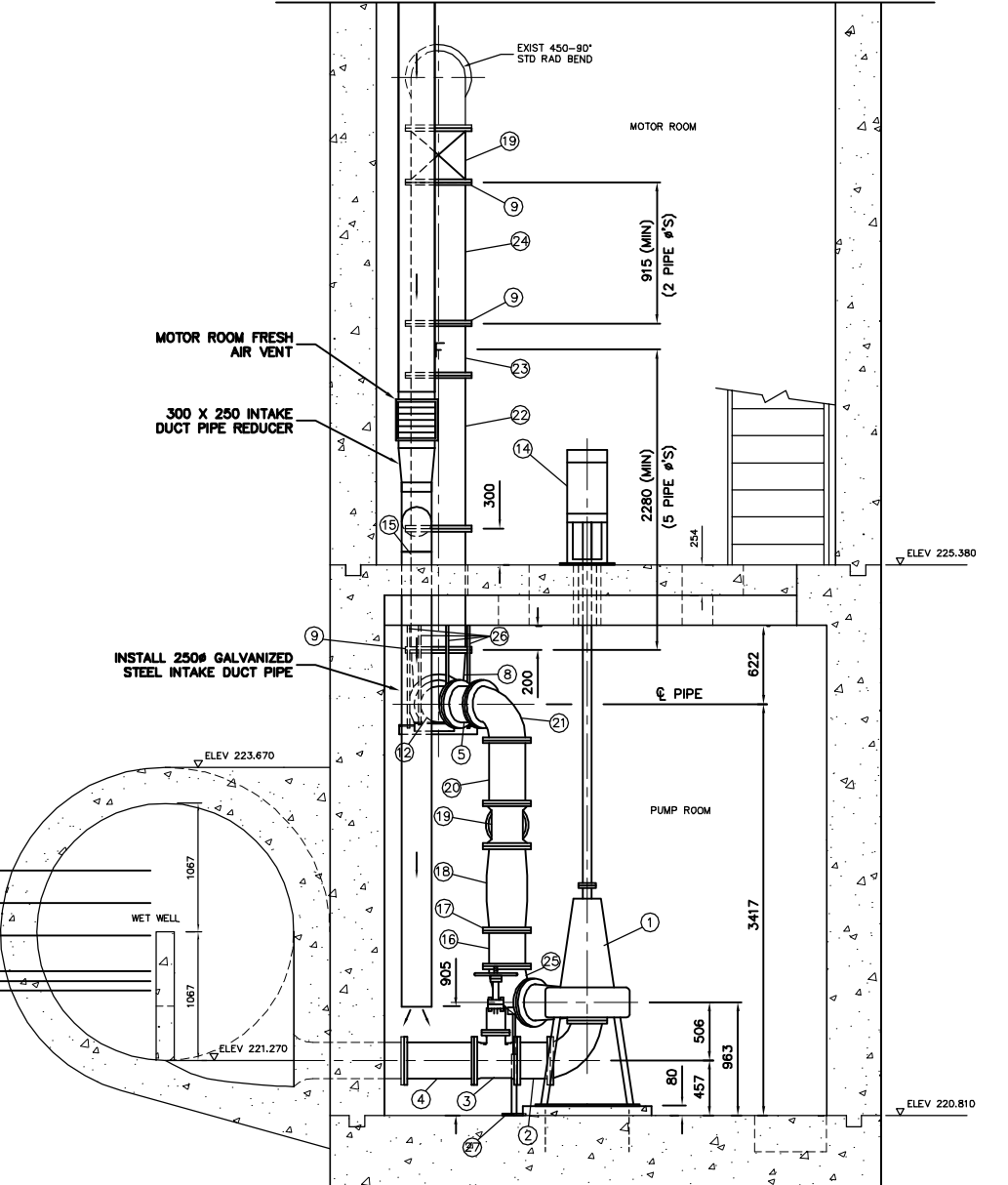
**MATERIALS LIST**

| ITEM | DESCRIPTION  | ENDS    | LENGTH      | QUANTITY |
|------|--|---------|-------------|----------|
| 1    | FLOWSERVE MODEL 10MF16A PUMP                       | FL      | -           | 3 *      |
| 2    | 300# PIPE  | FL      | -           | 3        |
| 3    | 300# GATE VALVE                                    | FL      | -           | 6        |
| 4    | 300# PIPE  | FL      | -           | 3        |
| 5    | 300# PIPE  | FL      | 275±        | 1        |
| 6    | 350 X 300 X 300 CAST IRON REDUCING WYE             | FL      | -           | 1        |
| 7    | 400 X 350 X 300 CAST IRON REDUCING WYE             | FL      | -           | 1        |
| 8    | 450 X 400 CAST IRON STD RAD REDUCING BEND          | FL      | -           | 1        |
| 9    | 450 "UNIFLANGE" OR APPROVED EQUAL REMOVABLE FLANGE | -       | -           | 3        |
| 10   | 350# PIPE  | FL      | 702±        | 1        |
| 11   | 300# PIPE  | FL      | -           | 1        |
| 12   | 300# CAST IRON 45° STD RAD BEND                    | FL      | -           | 1        |
| 14   | PUMP MOTOR AND BASE                                | -       | -           | 3        |
| 15   | 450# PIPE  | PE X FL | -           | 1        |
| 16   | 300# PIPE  | FL X PE | 300         | 3        |
| 17   | 300 "UNIFLANGE" OR APPROVED EQUAL REMOVABLE FLANGE | -       | -           | 6        |
| 18   | 300 CHECK VALVE WITH RUBBER FLAP                   | FL X FL | -           | 3        |
| 19   | 450# GATE VALVE                                    | FL X FL | 432         | 1        |
| 20   | 300# PIPE  | FL      | 895         | 3        |
| 21   | 300 CAST IRON 90° STD RAD BEND                     | FL      | -           | 3        |
| 22   | 450# PIPE  | FL      | -           | 1        |
| 23   | 450 ROSEMOUNT OR ABB FLOWMETER                     | FL      | -           | 1        |
| 24   | 450# PIPE  | FL X PE | -           | 1        |
| 25   | 300 X 250 CAST IRON REDUCING STD ELBOW             | FL      | -           | 3        |
| 26   | PIPE HANGER (SEE DETAIL ON THIS DWG)               | -       | AS-REQUIRED | 3        |
| 27   | PIPE SUPPORTS                                      | -       | -           | 3        |

NOTE: LENGTHS & DIMENSIONS SHOWN AS ± TO BE FIELD CONFIRMED BY CONTRACTOR  
\* ITEMS SUPPLIED BY CITY  
- CONTRACTOR TO SUPPLY AND INSTALL POWER CABLES AND CONDUIT FROM PUMP MOTORS TO ELECTRICAL CONTROL PANEL IN STATION



**SECTION A-A**  
SCALE 1:30



**SECTION B-B**  
SCALE 1:30

FOR CONSTRUCTION NOTES:  
SEE DRAWING 06020

**METRIC**  
WHOLE NUMBERS INDICATE MILLIMETRES  
DECIMALIZED NUMBERS INDICATE METRES

| 200 WM   | WATERMAIN           | 200 WM   | SL, HYDRO         | 150 WM         | WATERMAIN              | 150 WM              |
|----------|---------------------|----------|-------------------|----------------|------------------------|---------------------|
| ⊕        | HYDRANT             | ⊕        | MTS               | +              | HYDRANT                | +                   |
| ⊙        | VALVE               | ⊙        | TRAFFIC SIGNALS   | X              | VALVE                  | X                   |
| 525 LDS  | LAND DRAINAGE SEWER | 525 LDS  | GAS               | 50 GAS         | 300 LDS                | LAND DRAINAGE SEWER |
| 375 WWS  | WASTEWATER SEWER    | 375 WWS  | SURVEY BAR        | 250 WWS        | WASTEWATER SEWER       | 250 WWS             |
| ○        | MANHOLE             | ●        | FENCE             | X              | PROFILE                |                     |
| □        | CATCH BASIN         | ■        | POLE - HYDRO, MTS | =====          | GROUND ABOVE PIPE      |                     |
| ▽        | CURB INLET          | ▽        | CURB STOP         | ▲              | ☉ DITCH (NORTH & WEST) |                     |
| +        | JUNCTIONS           | +        | GUY ANCHOR        | ▽              | ☉ DITCH (SOUTH & EAST) |                     |
| —        | CULVERT             | —        | LIGHT STANDARD    | □              | GUTTER (NORTH & EAST)  |                     |
| ⊖        | ANODE               | ⊖        | TREE              | ○              | GUTTER (SOUTH & EAST)  |                     |
| EXISTING | LEGEND-PLAN         | PROPOSED | EXISTING          | LEGEND-PLAN    | PROPOSED               | EXISTING            |
|          |                     |          |                   | LEGEND-PROFILE | PROPOSED               |                     |

**LOCATION APPROVED**  
UNDERGROUND STRUCTURES

|   |      |
|---|------|
| SUPV. U/G STRUCTURES COMMITTEE  | DATE |
| NOTE:   |      |
| LOCATION OF UNDERGROUND STRUCTURES AS SHOWN ARE BASED ON THE BEST INFORMATION AVAILABLE BUT NO GUARANTEE IS GIVEN THAT ALL EXISTING UTILITIES ARE SHOWN OR THAT THE GIVEN LOCATIONS ARE EXACT. CONFIRMATION OF EXISTENCE AND EXACT LOCATION OF ALL SERVICES MUST BE OBTAINED FROM THE INDIVIDUAL UTILITIES BEFORE PROCEEDING WITH CONSTRUCTION. |      |

|               |               |
|---------------|---------------|
| B.M. ELEV.    | FIELD BOOK #: |
| POSTED TO LBS |               |
| NO. REVISIONS | DATE BY       |

**CITY OF WINNIPEG**  
**WATER AND WASTE**  
**ENGINEERING DIVISION**

DESIGNED BY: DB  
CHECKED BY: TW  
DRAWN BY: C/JH  
APPROVED BY: KZ  
HOR. SCALE: 1:250  
VERTICAL: 1:50  
DATE: 2007 12 13

ENGINEER'S SEAL  
ORIGINAL SIGNED BY K.R. ZUREK  
2007.12.13  
BID OPPORTUNITY: 905-2007  
FILENAME: 06795.dwg  
PLOT DATE: 2007 12 13

**THE CITY OF WINNIPEG**  
**WATER AND WASTE DEPARTMENT**

2007 PUMPING STATION UPGRADES  
INSTALLATION OF NEW PUMPING UNITS AND MODIFICATIONS TO THE  
**BALTIMORE WASTEWATER PUMPING STATION**  
SECTION VIEWS

SHEET 2 OF 16  
CITY DRAWING NUMBER  
06795