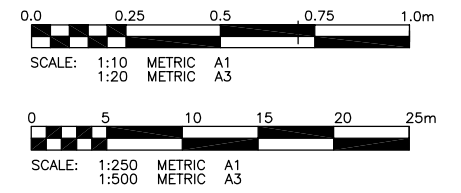
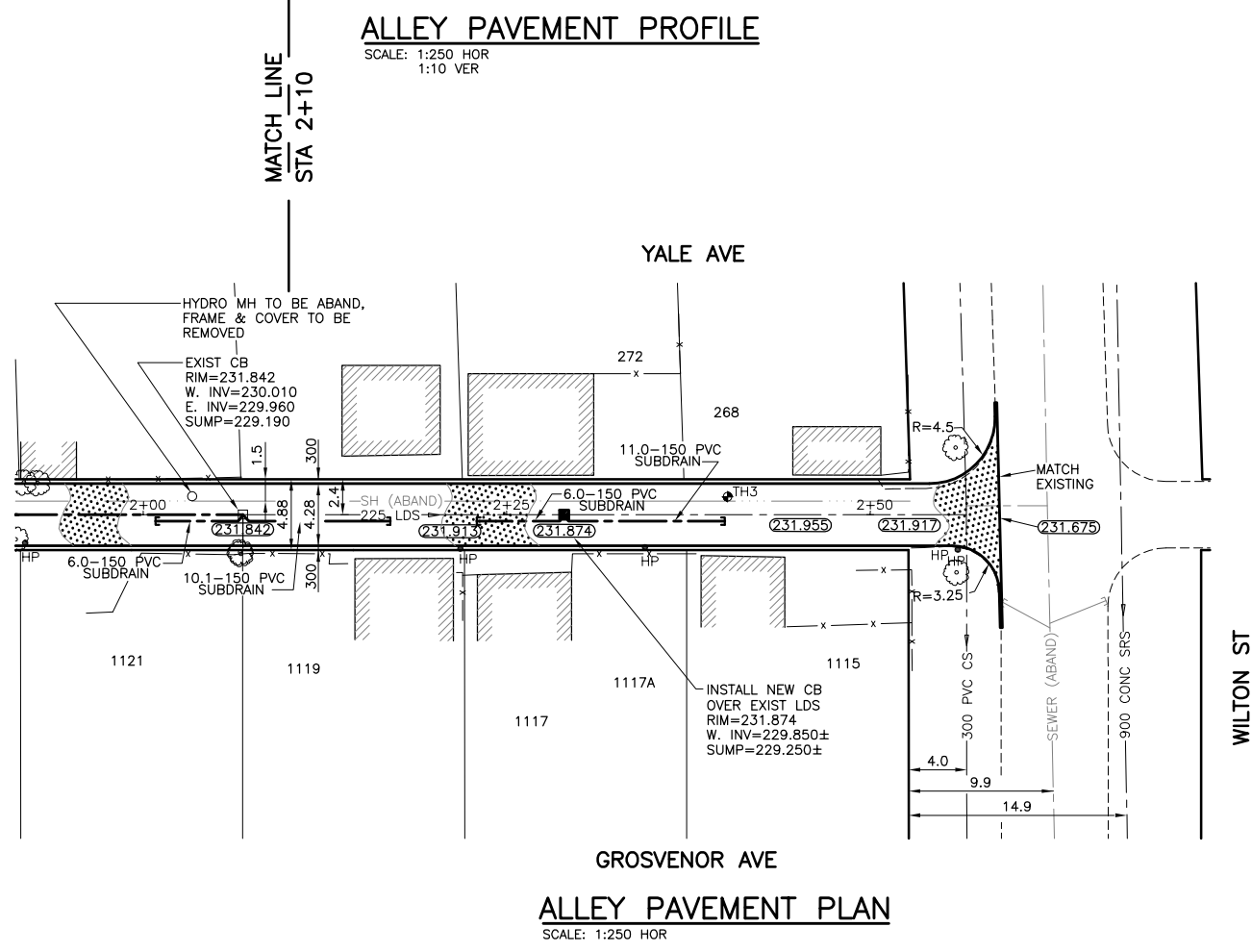


- NOTE:**
- STATION CHAINAGE IS BASED ON CENTERLINE OF ALLEY RIGHT OF WAY.
  - ADJUST MH AND CB RIMS TO NEW GRADES.
  - PLUG SUBDRAINS AT TERMINAL ENDS.
  - REGRADE EXISTING PRIVATE SIDEWALKS AS REQUIRED.
  - INSTALLATION OF LIP CURBS AND THEIR EXTENTS TO BE DETERMINED BY THE CONTRACT ADMINISTRATOR.
  - LIGHT STANDARDS, HYDRO POLES AND ANCHORS MAY REQUIRE TEMPORARY SUPPORT/REMOVAL OR REPLACEMENT AT THE CONTRACTOR'S EXPENSE.
  - ISOLATE ALL POLES, BASES AND PILES WITHIN ALLEY RIGHT OF WAY (SD-228C).
  - AVOID DAMAGE TO EXISTING TREES WITHIN THE LIMITS OF CONSTRUCTION.



**METRIC**  
WHOLE NUMBERS INDICATE MILLIMETRES  
DECIMALIZED NUMBERS INDICATE METRES

**WARNING**

IF POWER EQUIPMENT OR EXPLOSIVES ARE TO BE USED FOR EXCAVATION ON THIS PROJECT THE CONTRACTOR MUST:

- NOTIFY THE GAS COMPANY OF THE PROPOSED LOCATION OF EXCAVATION.
- TAKE PRECAUTION TO AVOID DAMAGE TO GAS COMPANY INSTALLATIONS.

SEE PROVINCIAL REGULATION 210/72 FOR DETAILS.

**APEGM**  
Certificate of Authorization  
KGS Group  
No. 245 Expiry: April 30, 2007

EXISTING	LEGEND-PLAN	PROPOSED	EXISTING	LEGEND-PLAN	PROPOSED	EXISTING	LEGEND-PROFILE	PROPOSED
300 LBS	LAND DRAINAGE SEWER	300 LBS	+	TEST HOLE				
250 WWS	WASTE WATER SEWER	250 WWS	→	GUY WIRE				
---	GAS	---	→	LIGHT STANDARD				
---	HYDRO	---	→	BACK OF CURB				
---	M.T.S.	---	→	CONCRETE				
150 WM	WATERMAIN	150 WM	→	ASPHALT				
+	HYDRANT	+	→	SIDEWALK				
⊙	VALVE	⊙	→	PROPERTY LINE				
○	MANHOLE	○	→	SURVEY BAR				
□	CATCH BASIN	□	→	GEODETIC BENCHMARK				
▽	CURB INLET	▽	→	ELEVATION				
•	POLES	•	→					
			→					

**LOCATION APPROVED UNDERGROUND STRUCTURES**

SUPV. U/G STRUCTURES DATE COMMITTEE

**NOTE:**  
LOCATION OF UNDERGROUND STRUCTURES AS SHOWN ARE BASED ON THE BEST INFORMATION AVAILABLE BUT NO GUARANTEE IS GIVEN THAT ALL EXISTING UTILITIES ARE SHOWN OR THAT THE GIVEN LOCATIONS ARE EXACT. CONFIRMATION OF EXISTENCE AND EXACT LOCATION OF ALL SERVICES MUST BE OBTAINED FROM THE INDIVIDUAL UTILITIES BEFORE PROCEEDING WITH CONSTRUCTION.

B.M. 52-039 ELEV. 232.480m

S.W. COR. GROSVENOR AVE. & WILTON ST., TRILE. IN N.W. COR. WALL OF ST. GEORGE'S ANGLICAN CHURCH, NO. 1118 GROSVENOR AVE., 1.0m E. & 0.5m BELOW TYPICAL STONE OF N.W. COR. OF CHURCH.

**KGS GROUP** CONSULTING ENGINEERS & PROJECT MANAGERS

WINNIPEG (204) 896-1209  
THUNDER BAY (807) 345-2233

DESIGNED BY RO CHECKED BY CR

DRAWN BY DW APPROVED BY

HOR. SCALE: 1:250  
VERTICAL: 1:50

RELEASED FOR CONSTRUCTION: DATE

NO. REVISIONS DATE BY

ENGINEER'S SEAL

ORIGINAL SIGNED BY M.C. ROWBOTHAM FEB 07/2007

CONSULTANT DRAWING NO. 06-0107-18

**THE CITY OF WINNIPEG**  
PUBLIC WORKS DEPARTMENT  
ENGINEERING SERVICES DIVISION

PROJECT TITLE: 2007 ALLEY RENEWAL PROGRAM

YALE AVE/GROSVENOR AVE ALLEY  
ROCKWOOD ST TO WILTON ST  
STA. 2+10 TO STA. 2+59.01

SHEET 09 OF 09

COMPUTER FILE NAME: 06-0107-18

CITY DRAWING NUMBER: 0009

P:\PROJECTS\2006\06-0107-18\MUN\DWGS\YALE\DWG\YALE\_ALLEY-PLAN-DWG