

MANUFACTURED MILLWORK NOTES:

- CASEWORK: FABRICATE CASEWORKS TO ANMAG CUSTOM QUALITY GRADE ALSO SEE SPECIFICATION FOR ADDITIONAL DETAIL INFORMATION
- ALL CABINETS SHALL BE LOCKABLE FOR KEYING INFORMATION REFER TO SPECIFICATION
- ALL CONCEALED METAL COMPONENTS, UNLESS NOTED OTHERWISE SHALL BE FINISHED TO MATCH EXPOSED METAL COMPONENTS
- PROVIDE MILLWORK HARDWARE AS PER SPECIFICATION
- CONFIRM ALL DIMENSIONS PRIOR TO COMMENCING FABRICATION OF MILLWORK
- PROVIDE ALL NECESSARY CUTOUTS, BLOCKING, SUPPORTS, ETC., FOR PROPER INSTALLATION AND FOR FIXTURES TO BE INSTALLED
- MILLWORK CONTRACTOR SHALL CONFIRM FIXTURE / APPLIANCE WITH MANUFACTURER DIMENSIONS & COORDINATE OPENING SIZES FOR FIXTURES WITHIN MILLWORK
- CONTRACTOR TO CO-ORDINATE WITH FIXTURE / APPLIANCE SUPPLIERS AND THE CITY PRIOR TO FINAL INSTALLATION TO PLANS
- CONTRACTOR SHALL PROVIDE SOLID BACKING IN WALLS AS REQUIRED TO SUPPORT ALL MILLWORK, EQUIPMENT, WASHROOM ACCESSORIES, ETC.
- ALL EXPOSED SURFACES SHALL BE PLASTIC LAMINATE UNLESS NOTED OTHERWISE ON DRAWINGS. PVC EDGE TRIM SHALL MATCH ADJACENT PLASTIC LAMINATE COLOUR.
- ALL INTERIORS OF DRAWERS AND CABINETS (NON-VISIBLE) TO BE FINISHED WITH MELAMINE UNLESS NOTED OTHERWISE ON DRAWINGS
- ALL INTERIOR SHELVES TO BE PLASTIC LAMINATE UNLESS NOTED OTHERWISE ON DRAWINGS
- SEE ELEVATIONS / PLANS FOR SPECIFIC CABINET CONFIGURATIONS, DIMENSIONS & QUANTITIES OF CABINETS
- FOR COMPLETE QUANTITIES OF ALL CABINETS REQUIRED FOR PROJECT REFER TO PLANS

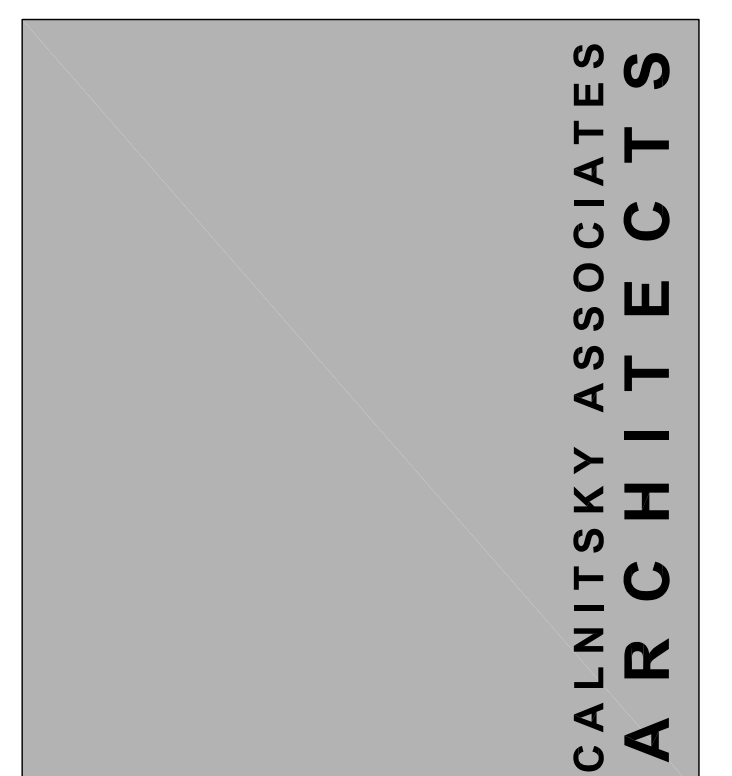
**NOT TO BE USED FOR CONSTRUCTION**  
(Remove when is final)

NO.	REVISION	DATE	BY
1	ISSUED FOR TENDER	25/3/08	JS
0	99% ISSUED FOR REVIEW	10/3/08	JS

THIS DRAWING IS THE EXCLUSIVE PROPERTY OF THE ARCHITECT AND CAN BE REPRODUCED ONLY WITH THE PERMISSION OF THE ARCHITECT IN WHICH CASE THE REPRODUCTION MUST BEAR THE NAME OF THE ARCHITECT.  
THIS DRAWING SHALL NOT BE SCALED. FOLLOW GIVEN DIMENSIONS ONLY.  
THE CONTRACTOR SHALL SATISFY HIMSELF THAT ALL DIMENSIONS AND INFORMATION SHOWN ARE CORRECT.  
PRIOR TO COMMENCEMENT OF WORK REPORT ANY DISCREPANCIES TO THE ARCHITECT.  
VARIATIONS AND MODIFICATIONS TO WORK SHOWN WILL NOT BE ALLOWED WITHOUT WRITTEN PERMISSION OF THE ARCHITECT.

CONSULTANT

SEAL



ARCHITECTURE | INTERIOR DESIGN  
124 Nassau Street North | Winnipeg, Manitoba R3L 2H1  
Tel: (204) 453-6441 | Fax: (204) 453-3392  
E-mail: caa@escape.ca

PROJECT TITLE  
**NORBERRY GLENLEE COMMUNITY CENTRE EXPANSION**  
26 Molgat Avenue, Winnipeg, MB  
Bid Opportunity No. 931-2007

SHEET TITLE

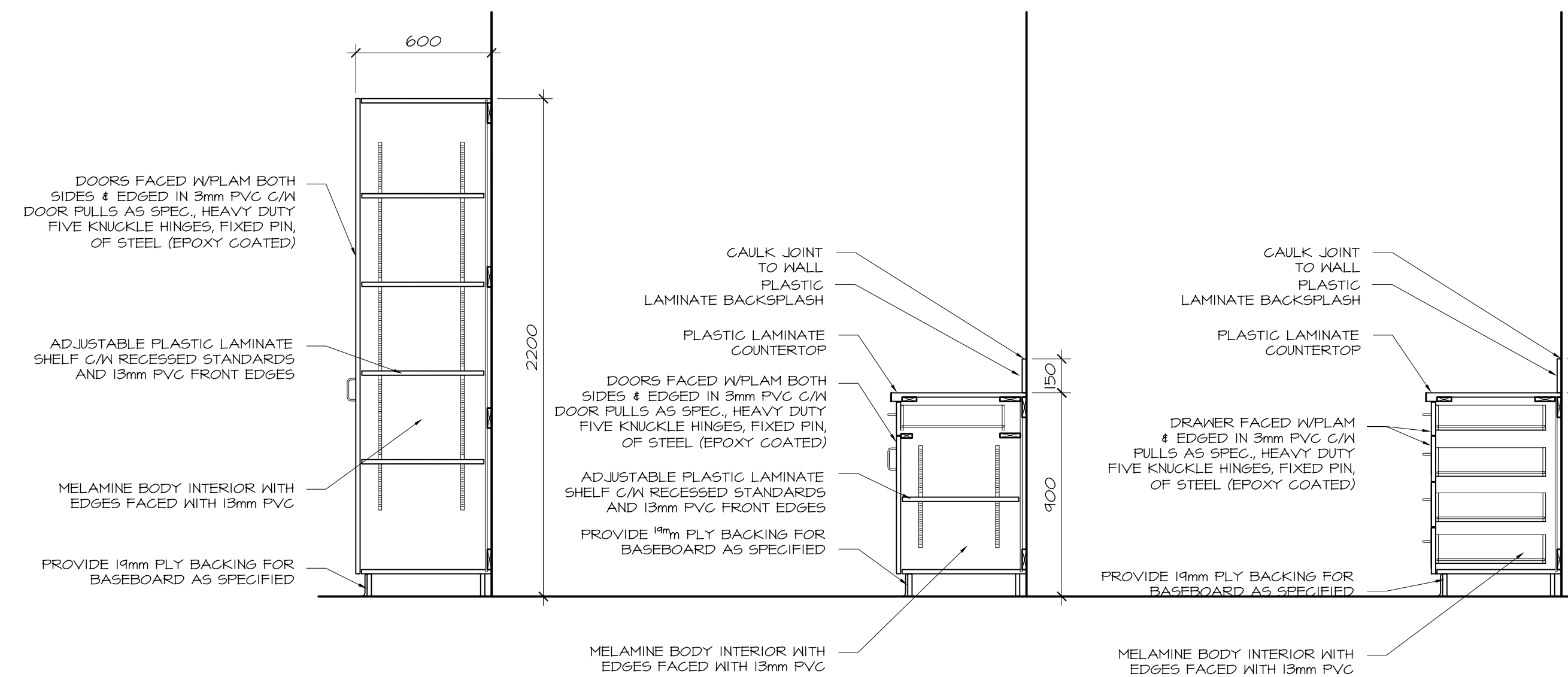
MILLWORK DETAILS

DRAWN BY	SCALE	SHEET NUMBER
MU, IP	AS NOTED	A-10.1
CHECKED BY	DATE	
PROJECT NUMBER	REVISION	
06-017	2	

1 MILLWORK DETAIL (TYP.)  
9.110.1 1:20

2 MILLWORK DETAIL (TYP.)  
9.110.1 1:20

3 MILLWORK DETAIL  
9.110.1 1:20

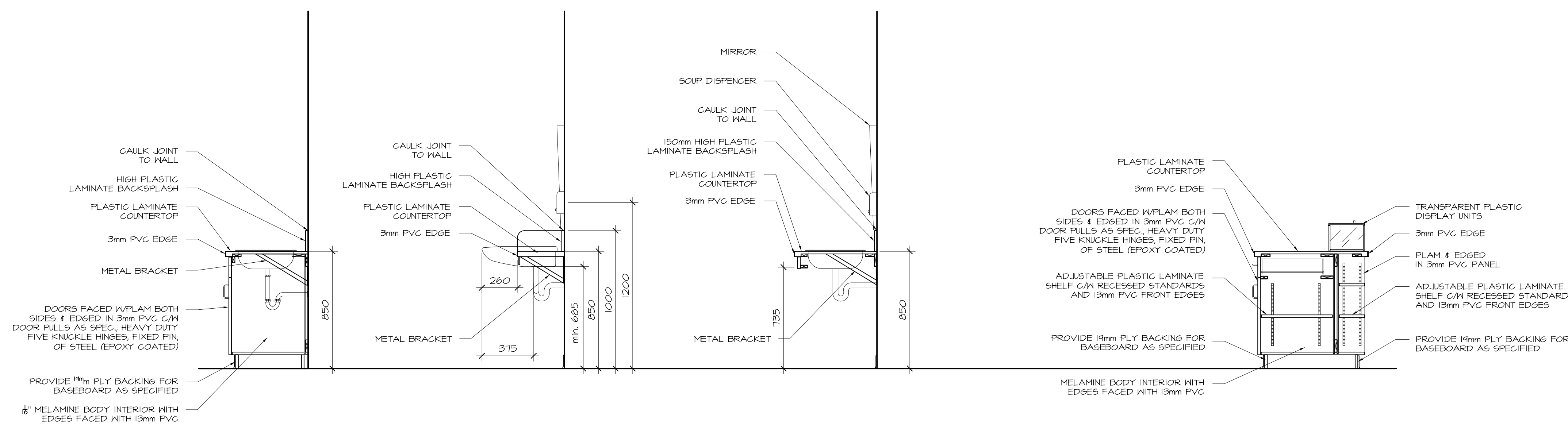


7 MILLWORK DETAIL  
9.110.1 1:20

8 MILLWORK DETAIL  
9.110.1 1:20

9 MILLWORK DETAIL  
9.110.1 1:20

10 MILLWORK DETAIL  
9.110.1 1:20



11 MILLWORK DETAIL  
9.110.1 1:20

12 MILLWORK DETAIL  
9.110.1 1:20

13 MILLWORK DETAIL  
9.110.1 1:20

14 MILLWORK DETAIL (TYP.)  
9.110.1 1:20