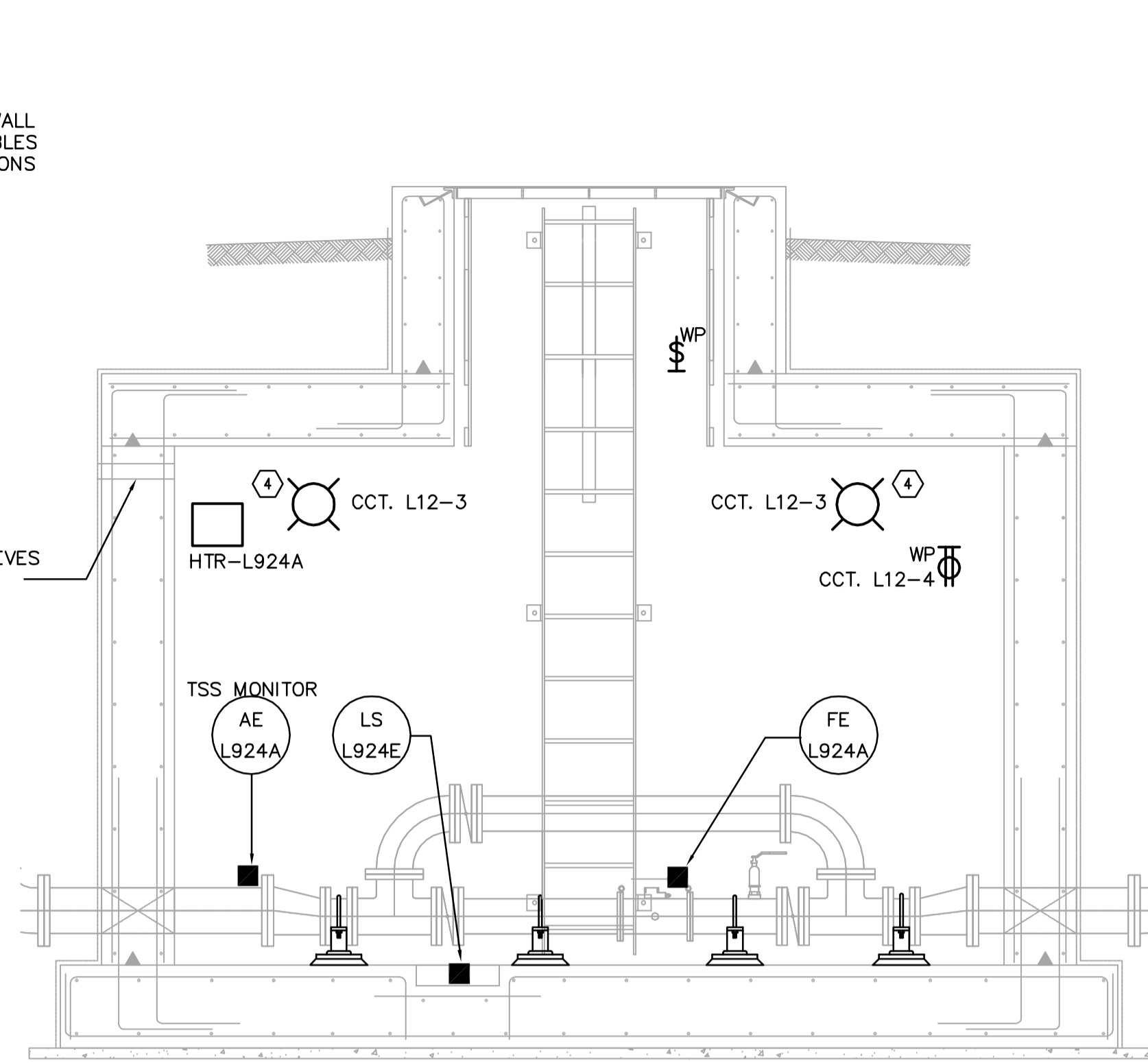


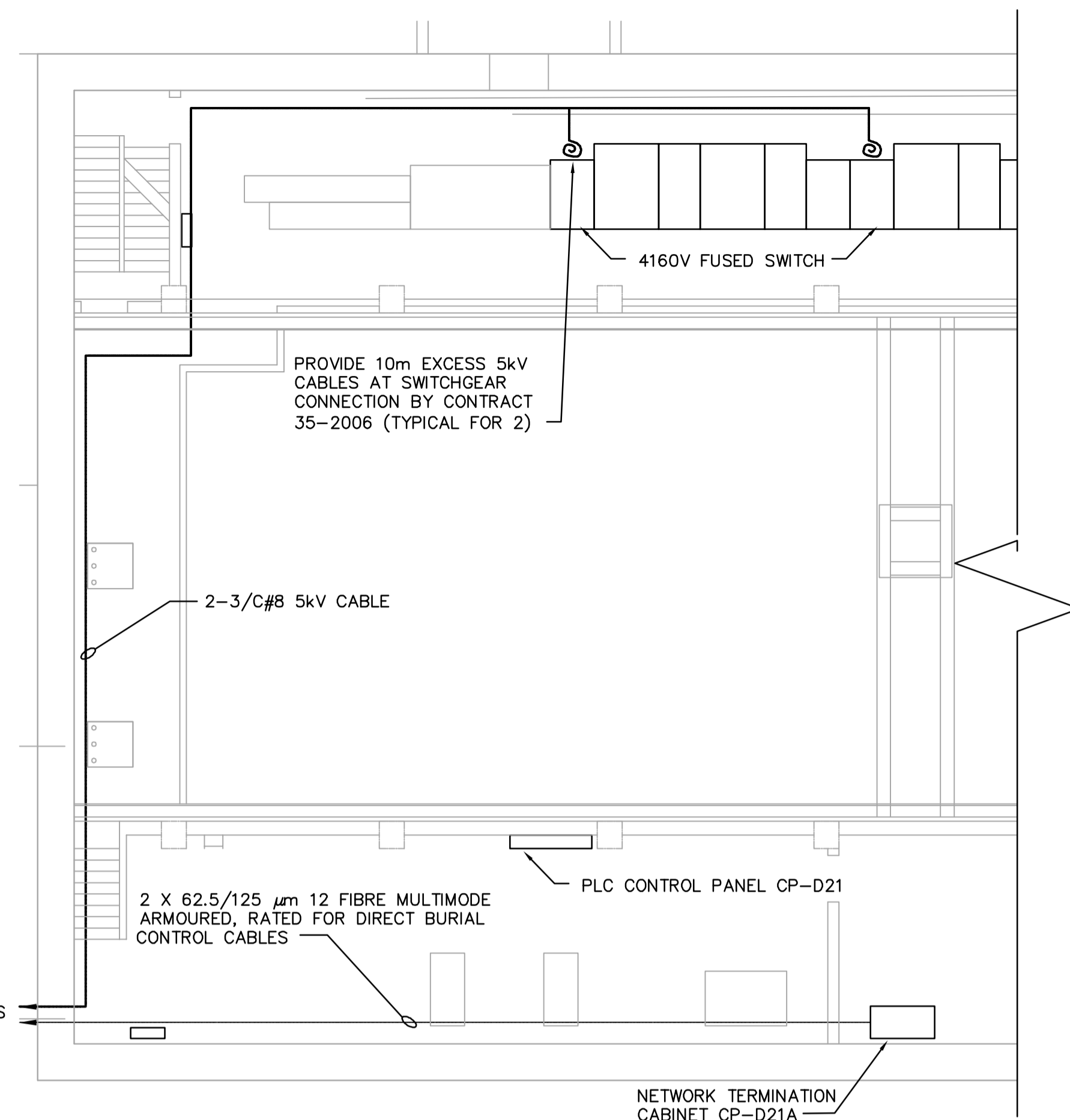
A **DETAIL - DEWATERING PUMP STATION**
 E0110 N.T.S.
 NOTE: CATEGORY 2, CLASS 1, ZONE 1 LOCATION

PIPE SLEEVES THROUGH WALL
 2-50mm - CONTROL CABLES
 2-75mm PUMP CONNECTIONS

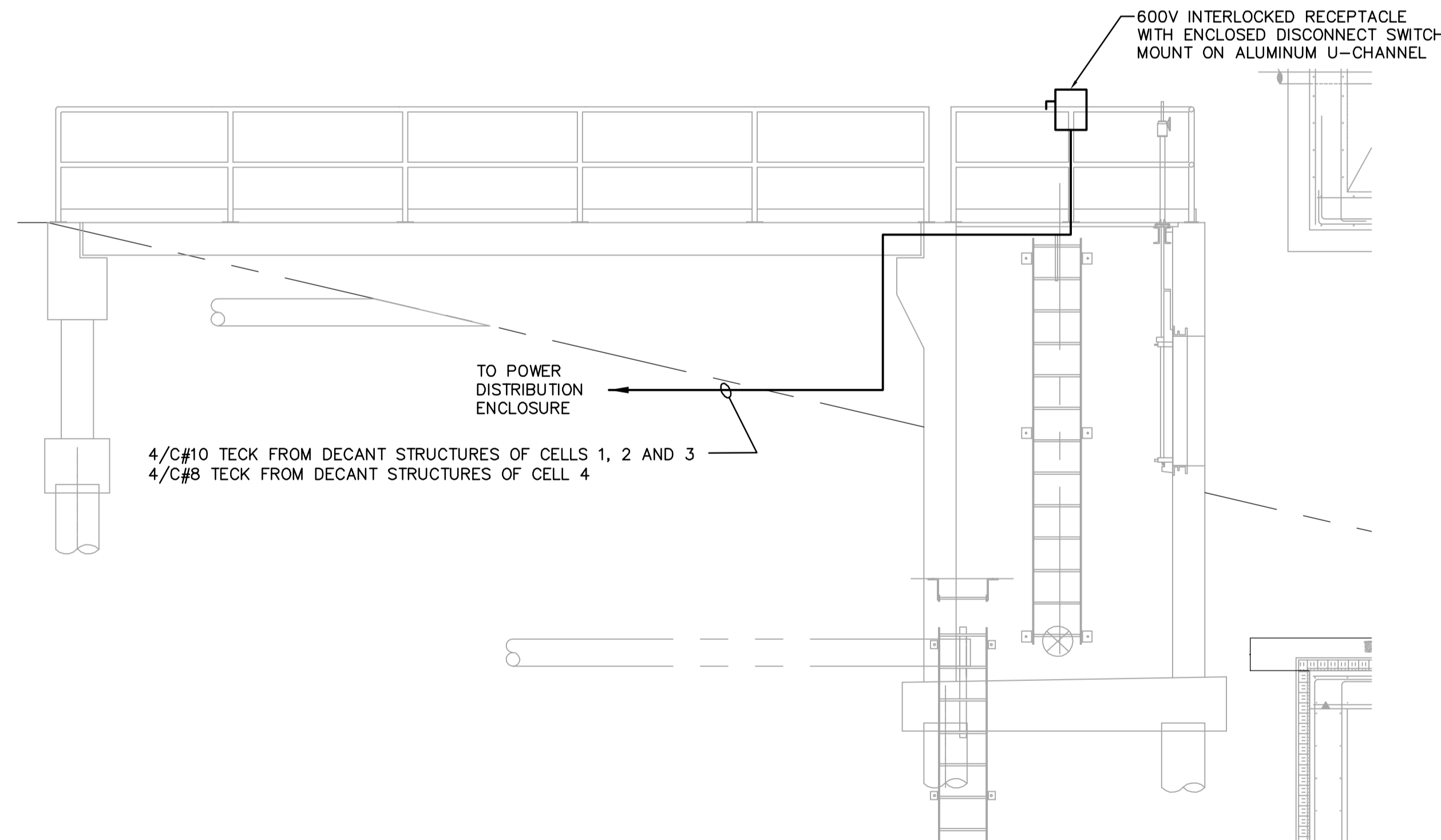
2-50mm PIPE SLEEVES THROUGH WALL



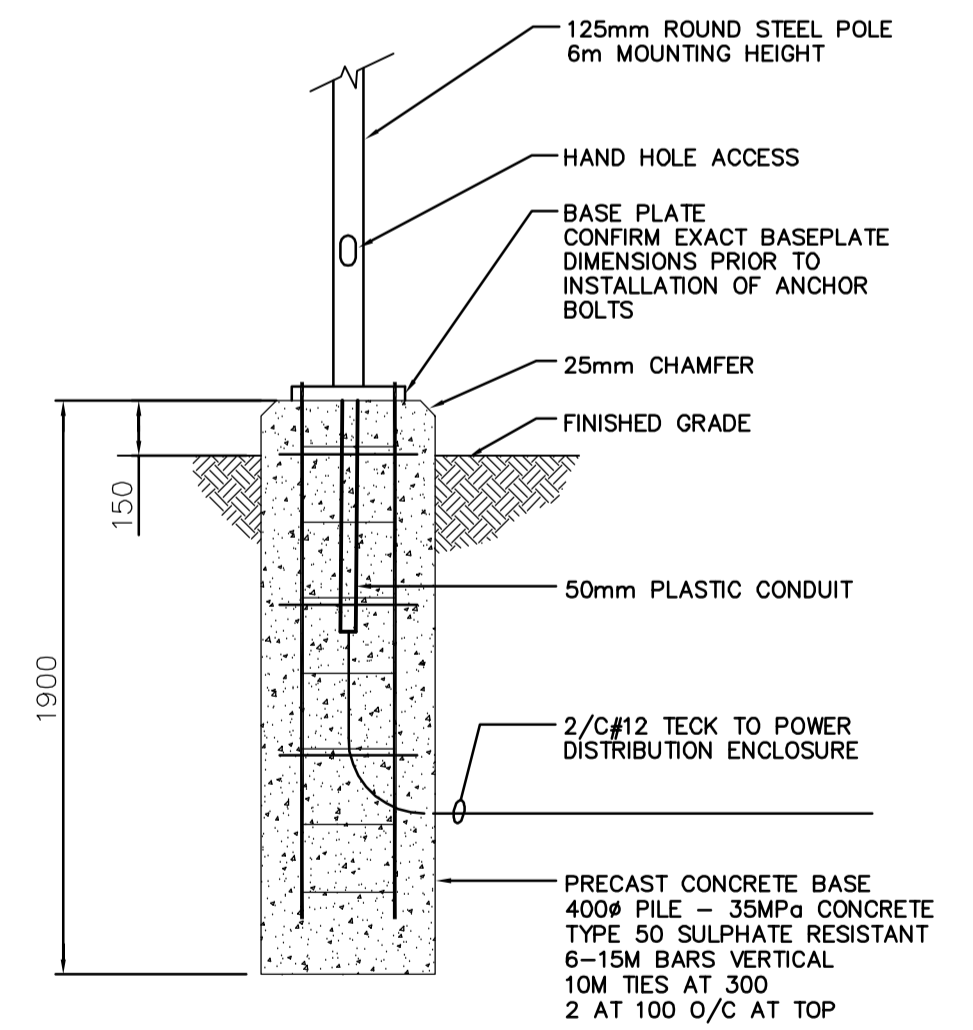
B **DETAIL - METERING CHAMBER**
 E0110 N.T.S.
 NOTE: CATEGORY 1 LOCATION



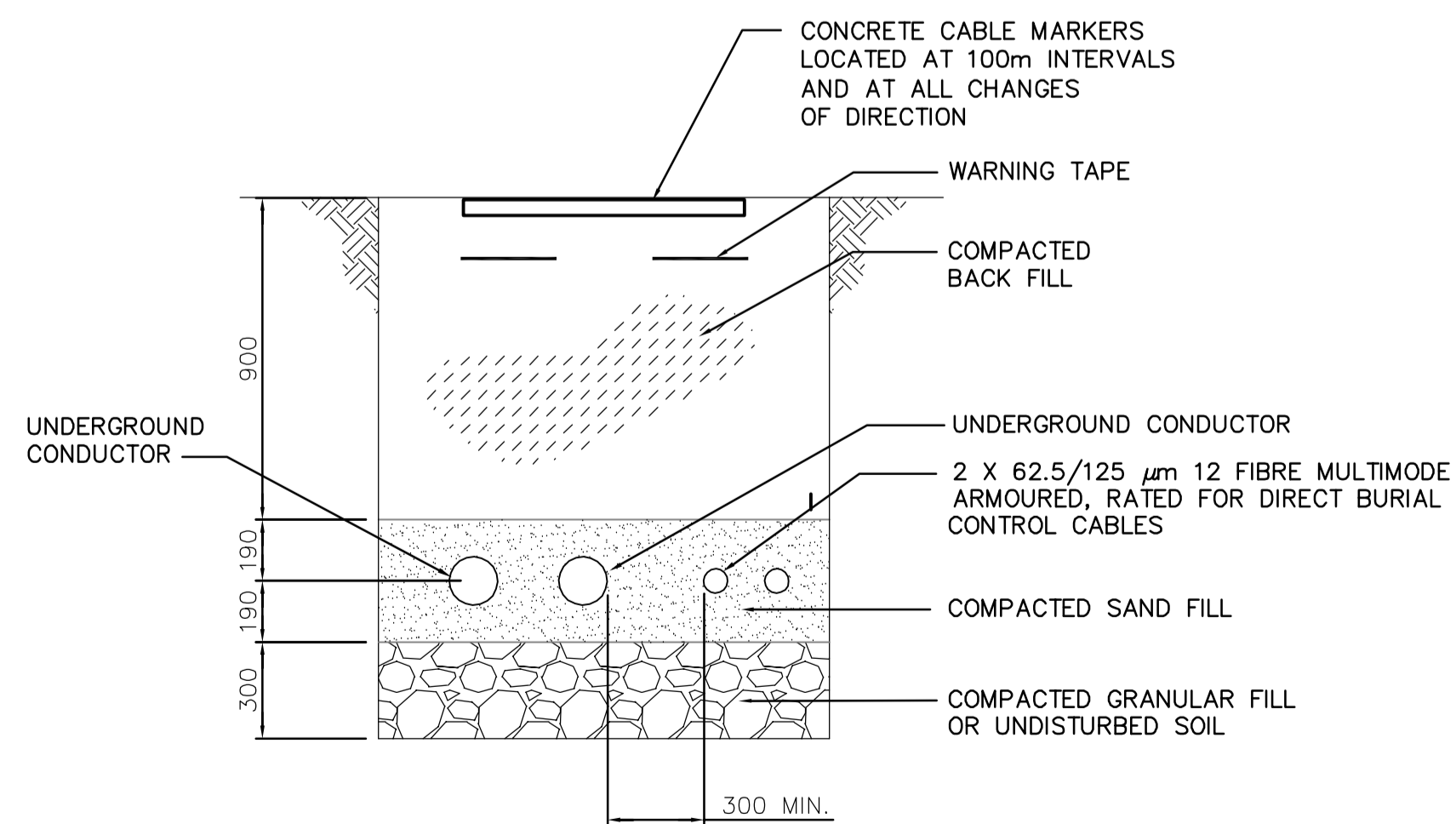
C **DETAIL - DBPs ABOVE ELEVATION 230.8**
 E0110 N.T.S.



E **DETAIL - DECANT STRUCTURE**
 E0110 N.T.S.



F **DETAIL - POLE BASE**
 E0110 N.T.S.



D **DETAIL - CABLE TRENCH**
 E0110 N.T.S.

APEGM	
Certificate of Authorization	
Earth Tech Canada Inc.	
No. 730 Expiry: April 30, 2007	

B.M. ELEV.			
02	ISSUED FOR TENDER (94-2007)	07-02-20	ERC
01	ISSUED FOR CONSTRUCTION	06/06/06	JBC
00	ISSUED FOR TENDER	06/03/07	ERC
NO.	REVISIONS	DATE	BY

CH2M HILL		EarthTech	
Frederickson Cooper		A Tech International Ltd. Company	
DESIGNED BY	BLM	CHECKED BY	PS
DRAWN BY	ERC	APPROVED BY	DJT
SCALE:	AS SHOWN	RELEASED FOR CONSTRUCTION BY:	R. SOROKOWSKI
DATE	2006/01/03	DATE	06/03/07

ENGINEER'S SEAL
ORIGINAL SIGNED BY
B.L. MOORE
2006/03/07
CONSULTANT DRAWING NO.
WL-E0111

THE CITY OF WINNIPEG	
WATER AND WASTE DEPARTMENT	
ENGINEERING DIVISION	
WATER TREATMENT PLANT	
CONSTRUCTION OF DEWATERING CELLS	
CITY FILE NUMBER	
SHEET	OF
CITY DRAWING NUMBER	
1-0601L-A-E0111-001-02D	
ELECTRICAL DECANT SYSTEMS SECTIONS AND DETAILS	