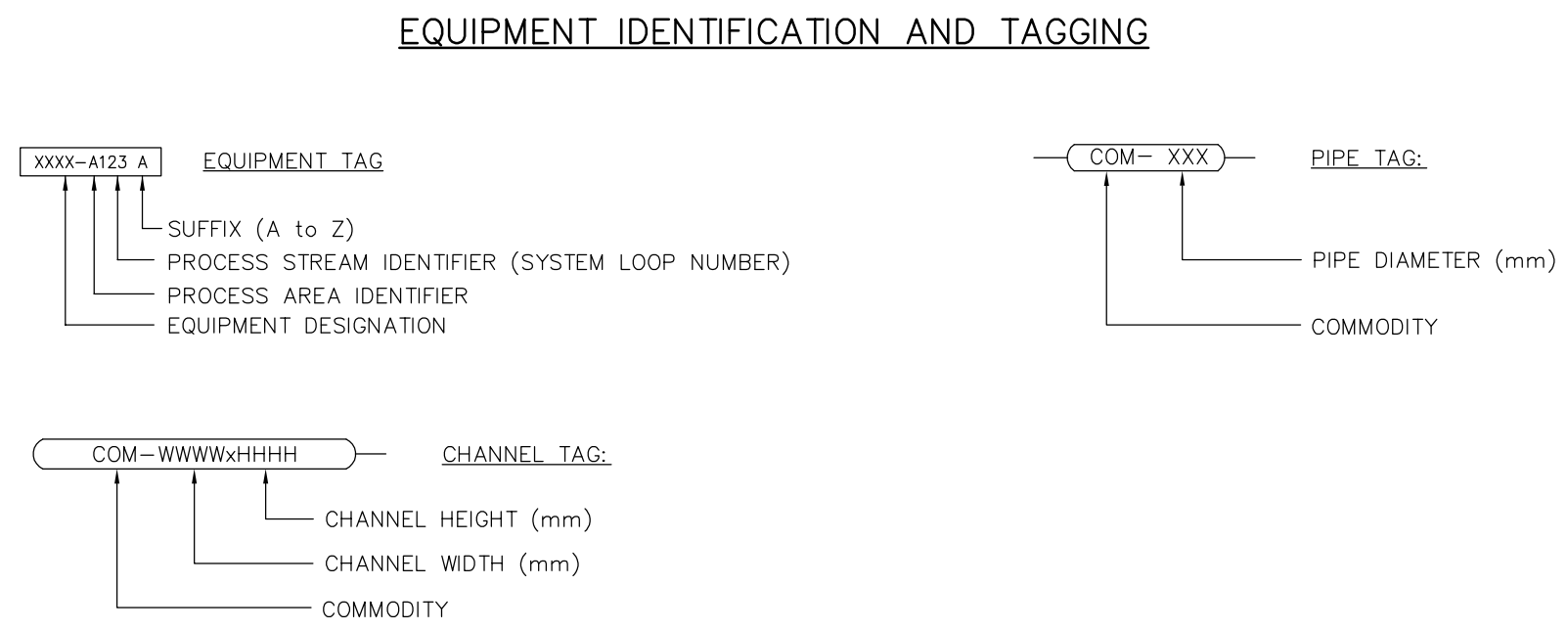
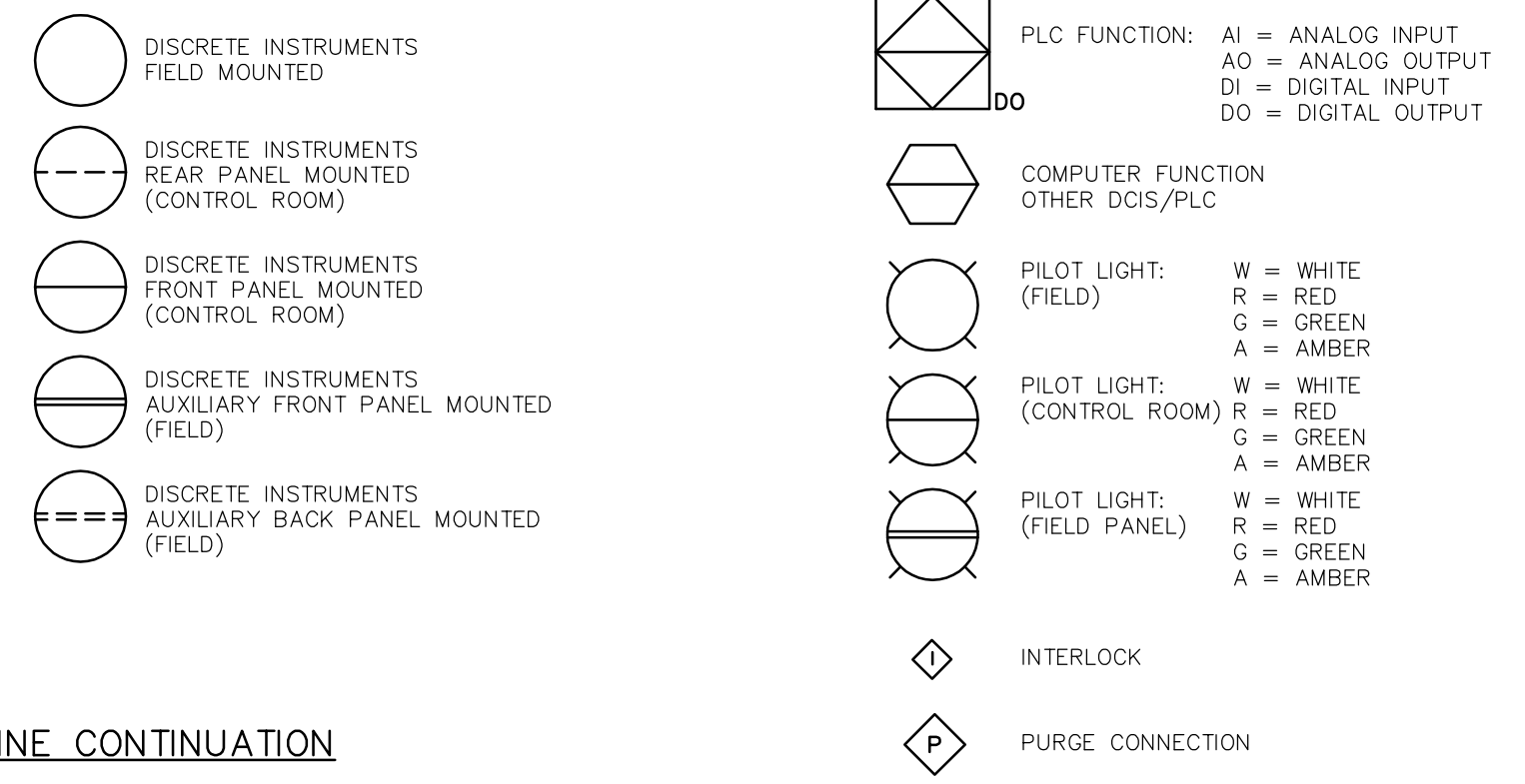


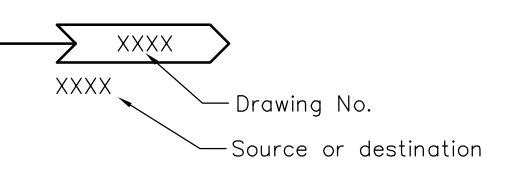
INSTRUMENT IDENTIFICATION TABLE with columns: FIRST-LETTER, SUCCEEDING-LETTERS, MEASURED OR INITIATING VARIABLE, READOUT OR PASSIVE FUNCTION, OUTPUT FUNCTION.



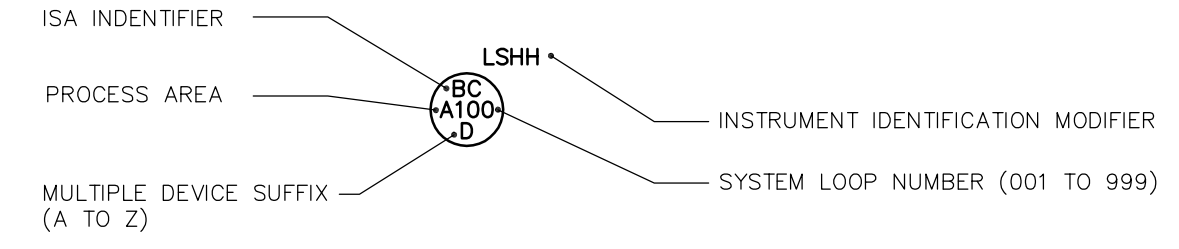
INSTRUMENT SYMBOLS



LINE CONTINUATION



INSTRUMENT DESIGNATION NUMBER



POSITION FORMATS

PROCESS AREA IDENTIFIER

PROCESS AREA IDENTIFIER table listing areas like CHEMICAL FEED, PLANT UTILITIES, INLET WORKS & RAW WATER, and OZONE.

PROCESS STREAM IDENTIFIER

PROCESS STREAM IDENTIFIER table listing stream numbers like 001-999, 600-650, 901-950, etc.

INSTRUMENT IDENTIFICATION MODIFIER

INSTRUMENT IDENTIFICATION MODIFIER table listing modifiers like CAH, COH, DO, D/P, FAH, etc.

PROCESS LINE CODES

PROCESS LINE CODES table listing codes like AA, AGA, AS, AHP, ALP, BS, BWS, etc.

PIPE EXPOSURE

PIPE EXPOSURE table listing codes like BUR, EXP, SUB, ENC.

PIPE MATERIAL

PIPE MATERIAL table listing codes like QISP, CLDI, CMP, COP, CPVC, etc.

PRESSURE TESTING

PRESSURE TESTING table listing codes like H, I, P, NA.

ABBREVIATIONS

ABBREVIATIONS table listing codes like ACK, A/C, A/S, BRG, CURR, etc.

EQUIPMENT DESIGNATIONS

EQUIPMENT DESIGNATIONS table listing codes like ARV, ACU, ACR, AD, AHU, etc.

- NOTES: 1. IT IS EXPECTED THAT THE TYPE OF ANALYSIS BE DEFINED OUTSIDE THE TAGGING BUBBLE. 2. FIRST LETTER Y IS INTENDED FOR USE WHEN CONTROL OR MONITORING RESPONSES ARE EVENT DRIVEN AS OPPOSED TO TIME OR TIME-SCHEDULE DRIVEN. 3. IT IS EXPECTED THAT THE FUNCTIONS ASSOCIATED WITH THE USE OF SUCCEEDING LETTER Y WILL BE DEFINED OUTSIDE THE TAGGING BUBBLE.

COMMON INSTRUMENT / DEVICE IDENTIFIERS table with columns: ISA IDENTIFIER, INITIATING VARIABLE AND FUNCTION, ISA IDENTIFIER, INITIATING VARIABLE AND FUNCTION.

Project information block including logos for APEGM, EarthTech, and The City of Winnipeg, along with design dates and drawing numbers.