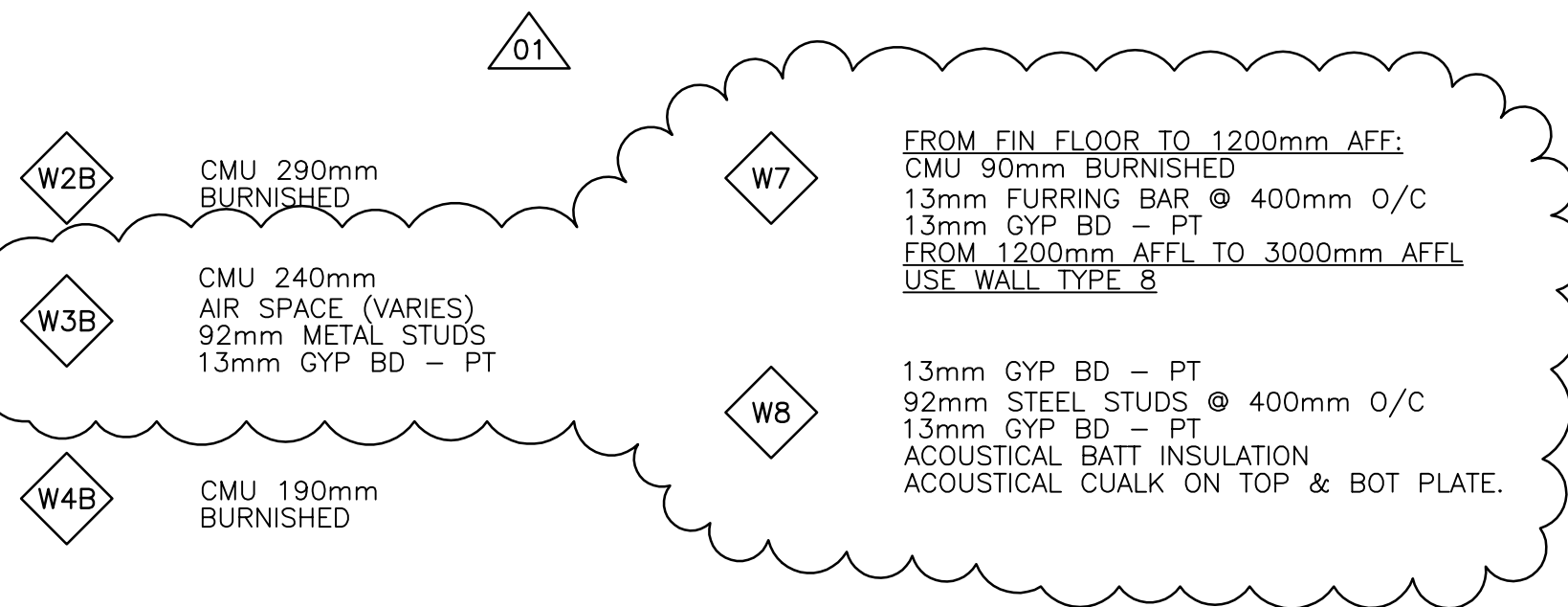
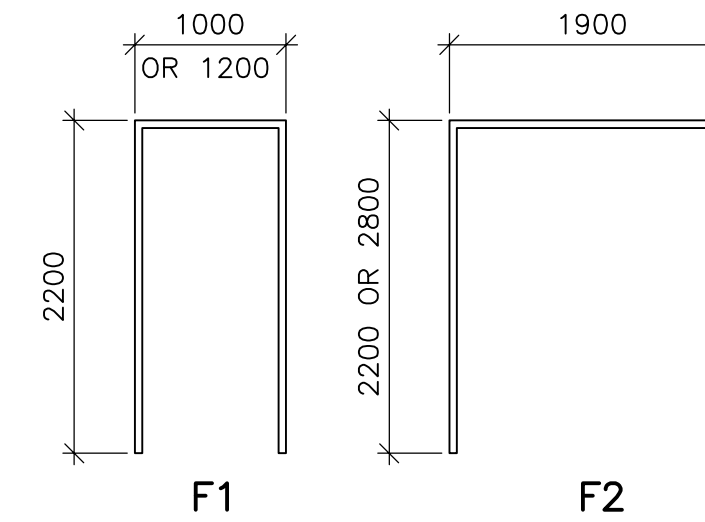
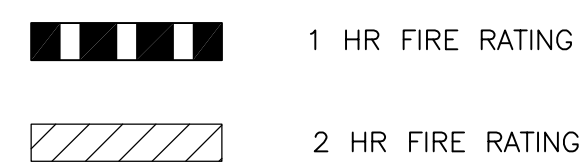


WALL TYPES:

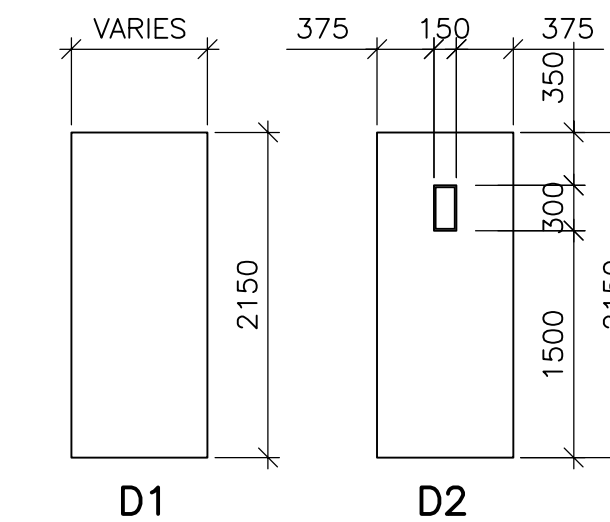
- W1 EXISTING CAST-IN-PLACE CONCRETE
- W2 CMU 290mm
- W3 CMU 240mm
- W4 CMU 190mm
- W5 CMU 140mm
- W6 CMU 90mm
- W6BD CMU 90mm BURNISHED
CMU 90mm BURNISHED
(DUAL WHYTE - BACK TO BACK)



FIRE RATINGS:



FRAME TYPES
SCALE 1:50



DOOR TYPES
SCALE 1:50

Hardware Set MI 1

3 Hinges	TA 314 4 1/2 x 4	32D	McKinney
1 Lockset-Storeroom	11G04 LL	26DCPC	Sargent
1 Closer	7500	SS	Norton
1 Kickplate	GSH 80A 10 x 1 1/2" LDW	32D	GSH
1 Floor Stop	GSH 218B	26D	GSH
1 Perimeter Gasket	319CN	C	Pemko
1 Auto Door Bottom	4301CRL 36"	C	Pemko

Hardware Set MI 6

3 Hinges	TA 314 4 1/2 x 4	32D	McKinney
1 Privacy Set	11U65 LL	26DCPC	Sargent
1 Wall Stop	GSH 250B	26D	GSH

Hardware Set MI 10

3 Hinges	TA 314 4 1/2 x 4	32D	McKinney
1 Passage	11U15 LL	26DCPC	Sargent
1 Closer	7500	SS	Norton
1 Kickplate	GSH 80A 10 x 1 1/2" LDW	32D	GSH
1 Floor Stop	GSH 218B	26D	GSH
1 Perimeter Gasket	319CN	C	Pemko
1 Auto Door Bottom	4301CRL 36"	C	Pemko

Hardware Set MI 14

6 Hinges	TA 314 4 1/2 x 4	32D	McKinney
2 Flushbolts	GSH 15	26D	GSH
1 Passage Set	11U15 LL	26DCPC	Sargent
2 Closers	J8501H SRI	689	Norton
2 Kickplates	GSH 80A 10 x 1 1/2" LDW	32D	GSH
2 Floor Stops	GSH 218B	26D	GSH
1 Perimeter Gasket	319CN 1/6 x 2/7	C	Pemko
2 Auto Door Bottoms	4301CRL 36"	C	Pemko

Hardware Set MI 2

3 Hinges	TA 314 4 1/2 x 4	32D	McKinney
1 Lockset-Storeroom	11G04 LL	26DCPC	Sargent
1 Closer	7500	SS	Norton
1 Kickplate	GSH 80A 10 x 1 1/2" LDW	32D	GSH
1 Floor Stop	GSH 218B	26D	GSH

Hardware Set MI 7

3 Hinges	TA 314 4 1/2 x 4	32D	McKinney
1 Lockset-Storeroom	11G04 LL	26DCPC	Sargent
1 Closer	7500	SS	Norton
1 Kickplate	GSH 80A 10 x 1 1/2" LDW	32D	GSH
1 Floor Stop	GSH 218B	26D	GSH
1 Perimeter Gasket	319CN	C	Pemko
1 Auto Door Bottom	4301CRL 36"	C	Pemko

Hardware Set MI 11

3 ea Hinges	TA 314 4 1/2 x 4	32D	McKinney
1 Passage set	11U15 LL	26DCPC	Sargent
1 Floor Stop	GSH280B	26D	GSH

Hardware Set MI 15

3 Hinges	TA 314 4 1/2 x 4	32D	McKinney
1 Exit Device	7100F LUM x AU628F	32D	Yale
1 Closer	7500	SS	Norton
1 Kickplate	GSH 80A 10 x 1 1/2" LDW	32D	GSH
1 Wall Stop	GSH 250B	26D	GSH
1 Perimeter Gasket	319CN	C	Pemko
1 Auto Door Bottom	4301CRL 36"	C	Pemko

Hardware Set MI 3

6 Hinges	TA 314 4 1/2 x 4	32D	McKinney
2 ea Flushbolts	GSH 401	26D	GSH
1 Passage Set	11U15 LL	26DCPC	Sargent
2 Kickplates	GSH 80A 10 x 1 1/2" LDW	32D	GSH
2 Closers	7500	SS	Norton
2 Floor Stops	GSH 280B	26D	GSH

Hardware Set MI 8

6 Hinges	TA 314 4 1/2 x 4	32D	McKinney
2 ea Auto Flushbolts	GSH 401	26D	GSH
1 Passage Set	41-11U15 LL	26DCPC	Sargent
2 Kickplates	GSH 80A 10 x 1 1/2" LDW	32D	GSH
1 Co-ordinator	500 Series	26D	DCI
2 Closers	7500	SS	Norton
2 Floor Stops	GSH 280B	26D	GSH

Hardware Set MI 12

3 Hinges	TA 314 4 1/2 x 4	32D	McKinney
1 Push Plate	GSH 81 4 x 16	32D	GSH
1 Pull	GSH 1907 4 x 16	32D	GSH
1 Closer	8501 SRI	689	Norton
1 Kickplate	GSH 80A 10 x 1 1/2" LDW	32D	GSH
1 Wall Stop	GSH 250B	26D	GSH

Hardware Set MI 16

3 Hinges	TA 314 4 1/2 x 4	32D	McKinney
1 Exit Device	7100F LUM x AU628F	32D	Yale
1 Closer	7500	SS	Norton
1 Kickplate	GSH 80A 10 x 1 1/2" LDW	32D	GSH
1 Wall Stop	GSH 250B	26D	GSH
1 Perimeter Gasket	319CN	C	Pemko
1 Auto Door Bottom	4301CRL 36"	C	Pemko

Hardware Set MI 4

3 Hinges	TA 314 4 1/2 x 4	32D	McKinney
1 Passage Set	11U15 LL	26DCPC	Sargent
1 Kickplate	GSH 80A 10 x 1 1/2" LDW	32D	GSH
1 Closer	7500	SS	Norton
1 Floor Stop	GSH 280B	26D	GSH

Hardware Set MI 9

3 ea Hinges	TA 314 4 1/2 x 4	32D	McKinney
1 Lockset Office	11G05 LL	26DCPC	Sargent
1 Floor Stop	GSH280B	26D	GSH
1 Coat Hook	GSH307B	26D	GSH

Hardware Set MI 13

3 Hinges	TA 314 4 1/2 x 4	32D	McKinney
1 Lockset -Storeroom	11G04 LL	26DCPC	Sargent
1 Closer	J8501 SRI	689	Norton
1 Kickplate	GSH 80A 10 x 1 1/2" LDW	32D	GSH
1 Floor Stop	GSH 218B	26D	GSH
1 Perimeter Gasket	319CN	C	Pemko
1 Auto Door Bottom	4301CRL 36"	C	Pemko

Hardware Set MI 5

6 Hinges	TA 314 4 1/2 x 4	32D	McKinney
2 ea Flushbolts	GSH 401	26D	GSH
1 Passage Set	11U15 LL	26DCPC	Sargent
2 Kickplates	GSH 80A 10 x 1 1/2" LDW	32D	GSH
2 Closers	7500	SS	Norton
2 Floor Stops	GSH 280B	26D	GSH



B.M. ELEV.			
DESIGNED BY	TWS	CHECKED BY	BJS
DRAWN BY	REH/LK	APPROVED BY	AHL
SCALE:	AS NOTED	RELEASED FOR CONSTRUCTION BY:	R. SOROKOWSKI
NO. REVISIONS	DATE	DATE	DATE
01	95-2007 ADDENDUM 01	07/06/12	LK
00	ISSUED FOR TENDER (95-2007)	07/06/05	LK
2005/08/03		2007/06/05	

CH2MHILL
Frederickson Cooper ARCHITECTS

EarthTech
A Top International Lic. Company

ENGINEER'S SEAL
ORIGINAL SIGNED BY
NEIL COOPER
2007/06/05

CONSULTANT DRAWING NO.
WB-B0505

THE CITY OF WINNIPEG
WATER AND WASTE DEPARTMENT
ENGINEERING DIVISION

WATER TREATMENT PLANT
MAIN BUILDING
OFFICE AND PLANT INTERIOR FINISHES

ARCHITECTURAL
DOOR SCHEDULE
DOOR TYPES AND SCHEDULES

CITY FILE NUMBER
SHEET OF
CITY DRAWING NUMBER
1-060B-A-B0505-001-01D